

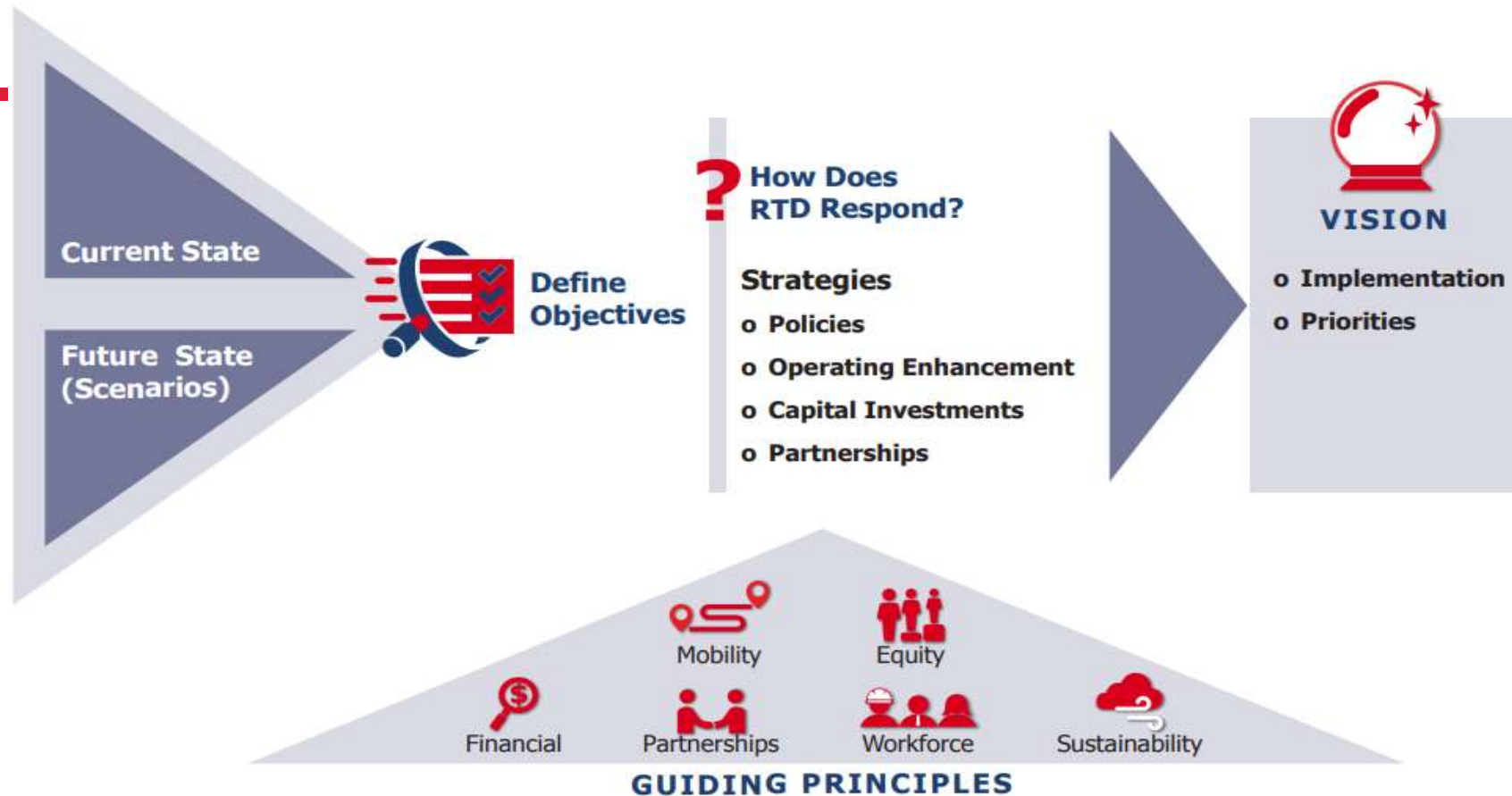


Keith Reester

Public Works & Utilities Director

# RTD Update

# MOBILITY PLAN for the FUTURE



Several images developed from RTD  
Reimagine consulting team - FHU

# RTD Current Financial Picture

70% reduction in ridership

\$150+ million in annual  
revenue losses

COVID Impact  
RTD Finances

Layoffs, furloughs,  
reduced and delayed  
expenditures

Future funding - Uncertain



# RTD Financial Challenges

---

## One-Time or Periodic

- \$205+ million in backlogged state of good repair
- Ongoing asset repair/replacement
- Litigation settlement costs (?)

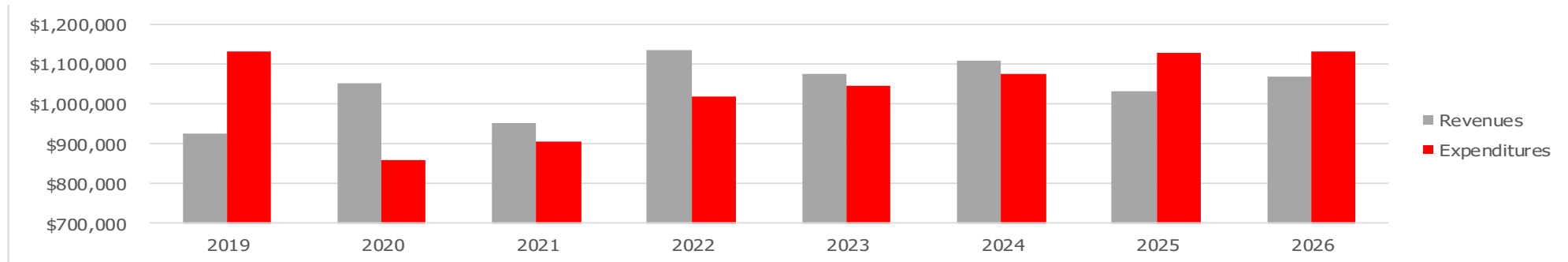
## Recurring

- Service levels
- Contract & Inflationary Increases
- Fares study & equity analysis
- Debt service and TABOR restrictions
- Funding for pensions, other liabilities

# COVID Relief Grants

	CARES	CRRSAA	ARPA	Total	% of Total Drawn
RTD Apportionment	\$ 232,253,946	\$ 203,367,528	\$ 338,468,333	\$ 774,089,807	
<u>Grant Draws</u>					
Employee Wages and Benefits	(146,908,920)	(48,837,977)	-	(195,746,897)	64.8%
Contracted Transportation - Bus	(36,380,870)	(7,211,749)	-	(43,592,619)	14.4%
Contracted Transportation - Rail	(48,964,156)	(13,672,597)	-	(62,636,753)	20.7%
Total Drawn	(232,253,946)	(69,722,323)	-	(301,976,269)	
Remaining to be Drawn	\$ -	\$ 133,645,205	\$ 338,468,333	\$ 472,113,538	

## Projected Revenues and Expenses (1,000s)



### Revenue less Expenditures (in thousands)

	2019	2020	2021	2022	2023	2024	2025	2026	Total
Revenues including COVID Grants	\$ 925,105	\$ 1,051,323	\$ 950,429	\$ 1,135,408	\$ 1,073,079	\$ 1,108,365	\$ 1,032,186	\$ 1,068,743	\$ 8,344,638
Expenditures	1,131,242	859,792	903,995	1,018,201	1,044,167	1,075,962	1,126,298	1,129,755	8,289,412
Total	\$ (206,137)	\$ 191,531	\$ 46,434	\$ 117,207	\$ 28,912	\$ 32,403	\$ (94,112)	\$ (61,012)	\$ 55,226

- ~10% of Base System Revenue to Debt Service
- ~55% of FasTracks System Revenue to Debt Service

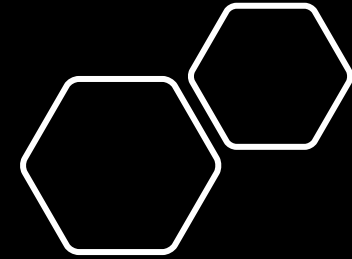
# Exploratory Modeling and Analysis Tool (EMAT)

## Inputs

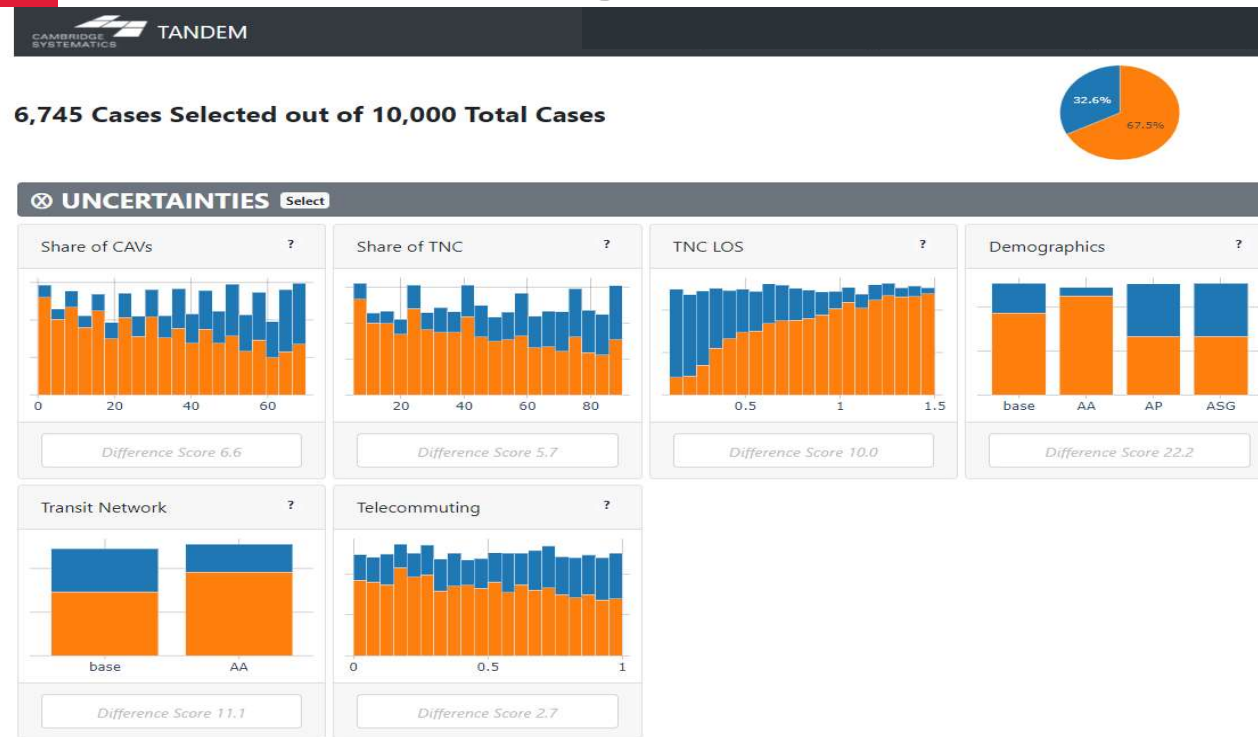
- Service Levels
  - Workforce
  - Funding availability
- Telework/Work From Home
- Micromobility
- Parking Cost
  - Park-n-Rides
  - Destination

## Outputs

- Ridership by Mode
- Mode Share
- Station Area Mode Access
- Vehicle Miles of Travel & Vehicle Hours of Travel
- Person Miles of Travel & Person Hours of Travel
  - Reported separately for transit and auto
- Trip Length
- Transit Travel Time
- Transit/Auto Travel Time Ratio
- Equity Areas Served



# EMAT Dashboard: Under What Scenario(s) Would Transit Mode Share be High



Example

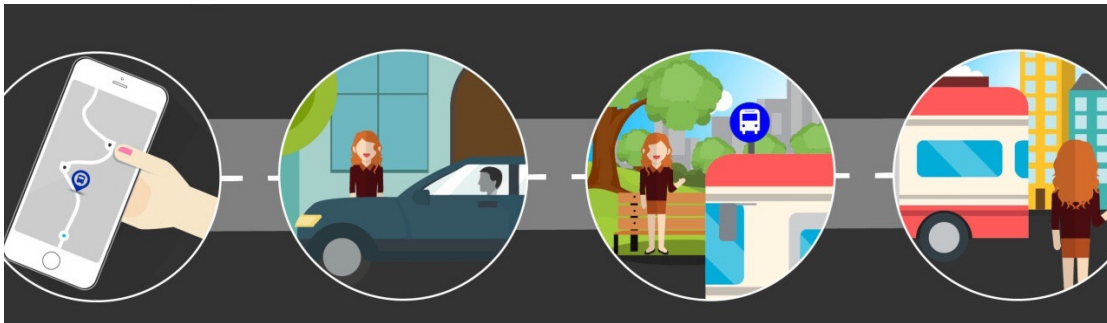
# RTD as a Mobility Integrator

---

## Integrator

---

RTD provides current services and partners with other organizations to develop a wide-ranging plan of mobility services, such as shuttles, bike and scooter rentals, carshare and ridehail



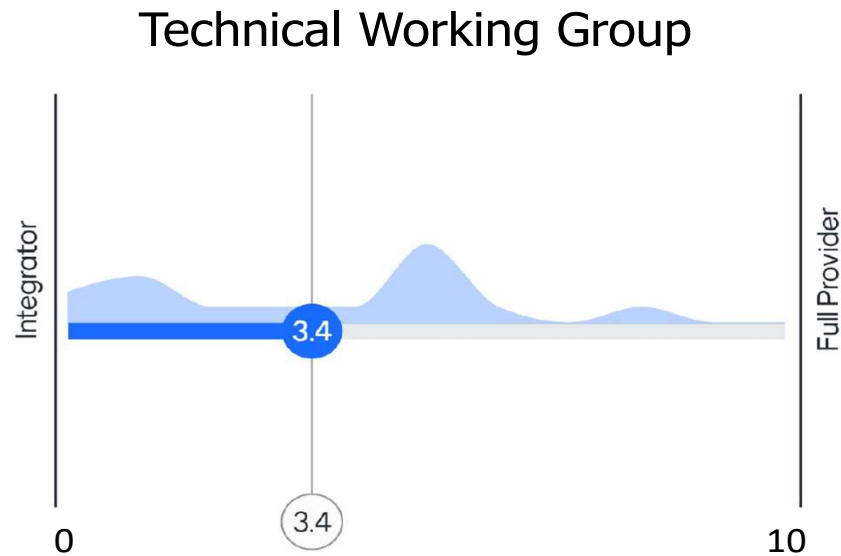
## Full Provider

---

RTD provides most public transportation services, including its current services and services it does not currently provide such as bike and scooter rentals, carshare and ridehail



# To What Level Do You Think RTD Should Act As a Full Transportation Provider vs. Integrator of Services?



**Integrator** = RTD provides current services and partners with other organizations to develop a wide-ranging plan of mobility services, such as shuttles, bike and scooter rentals, carshare and ridehail



**Full Provider** = RTD provides most public transportation services, including its current services and services it does not currently provide such as bike and scooter rentals, carshare and ridehail

# Define What it Means to be an Integrator

- Explore and evaluate RTD's internal structure
- Review RTD policies that influence their ability to being an integrator
- Review impact of state and federal regulations
- Define integrator expectations and partnerships
  - Funding
  - RTD brand
  - Maintenance
  - Operations of service
  - Funding to support service
  - Other

## Building Partnerships



**Public  
Transit  
Operators**



**Private  
Mobility  
Operators**



**Local  
Communities**



**Corporate  
Partners**



**TMA/TMOs**

## Integrating Customer Services

Availability   Routing   Booking/Accounts   Onboarding   Pricing   Payment   Analytics

## Providing Mobility Services



**High  
Capacity**

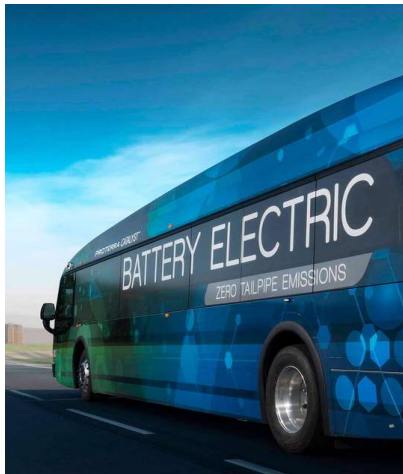


**Mid  
Capacity**



**Micro  
Capacity**

# Electrification Goes Well Beyond the Bus



**Needed  
Battery Size &  
Replacement  
Ratio**



**Best-fit Charging  
Strategies**



**Route Phasing  
Which to transition  
First and last**



**Fleet Power  
Requirements &  
Infrastructure**



**Capital and O&M  
Costs**

**MODELING**

# How does Littleton keep up on RTD?

- **Quarterly RTD Local Government Meetings**
  - “to discuss issues of interest to local jurisdictions and engage stakeholders on current RTD activities”
    - [PW/Planning Staff](#)
- **RTD Reimagine**
  - “effort to evaluate and forecast the changing transportation needs of our region”
  - “Reimagine RTD will identify comprehensive, forward-thinking strategies to better connect people to the places they want and need to go”
    - [Technical Advisory Committee \(TAC\) – Public Works & Utilities Director](#)



Questions