



# Envision LITTLETON

*Our Community. Our Future.*

---

An innovative community engagement  
effort to define a vision for our future

# Aligning the Stars

---

- Election 2017 Results
  - Term-limited Mayor
  - Work Plan culture emerges
  - Leadership focused
  - Retreat 2018
-

# Be Values-Based & Data-Driven

---

- Emotional connection
  - Communicate clear vision
  - Be intentional
  - Be on the same page
  - Measure progress
-

# Strategically Principled and Tactically Flexible

---

**Clear  
Unifying  
Vision**



**Aligning Resources**



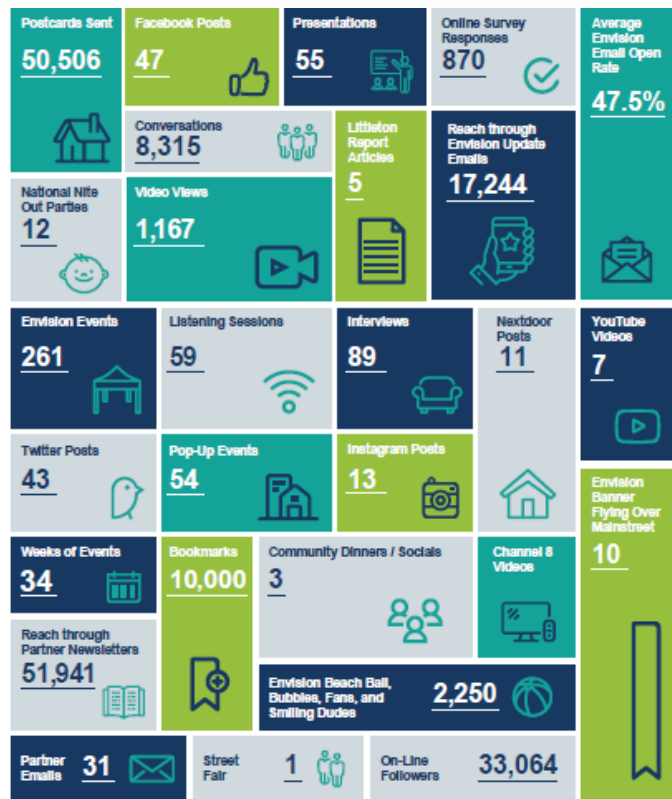
**Evolving Culture  
Of  
Collaboration  
(Systems Thinking)**

# Start with Emotional Connection

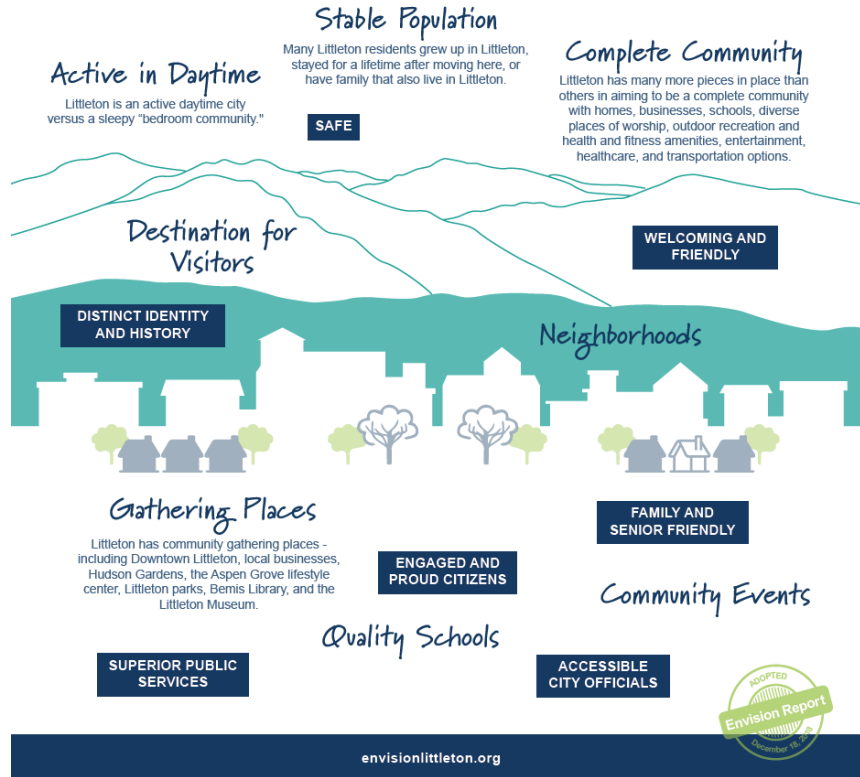
---

- Start with a long list of shared values; capture the hearts and minds of the community
  - Together, these are a philosophy
  - They encompass beliefs and values that span a lifetime
  - They are constant, irrespective of change
  - They guide you and inform your culture
  - They communicate what's important
-

# Great Input from Our Community with Each Step



# Unifying Vision & Shared Values



In 2040, Littleton will be:

- Quality Community
- Sustainable Community
- Resilient Community
- Safe Community
- Engaged Community
- Financially Sustainable

# Data-Driven & Outcomes/Deliverables

---

- Unifying Vision
  - Set Strategic Direction
  - Guide Internal Decision-Making
  - Shared Goals
  - Measure Progress
  - Revive Policy Making
  - Identify Action Steps
  - Organizational Culture and Implementation
-



An aerial photograph of Littleton, Colorado, showing a mix of residential and commercial buildings, lush green trees, and a multi-lane road with traffic. In the background, a range of mountains is visible under a cloudy sky. A large teal rectangular box is superimposed over the center of the image, containing the title text in white.

# ENVISION LITTLETON

*Comprehensive & Transportation Master Plans*

# 2019 – Five Phases



- Legacy of Past Planning
- Key Issues and Considerations
- **Framework for Action**
  - Goals
  - Policies
  - Actions
- Potential Partners

100

# BIG EARS...From Input and Vision ...

"Littleton is a great city to live in. It has a nice small-town feel and great amenities, including parks and local shops."



INPUT

CORE VALUE

## The Outdoors

Stewardship  
of river and  
open space  
assets



## Active

Support its  
residents' efforts  
to be fit and  
maintain a  
healthy lifestyle

Guiding Principle

# ... to Plan and ACTION

## Recreation, Heritage, and Tourism

### Goal HART 1

Preserved and enhanced public green spaces that provide access to nature, widespread opportunities for recreation and play close to home, and continuous greenway connections within and through the city.

GOAL



### Policy HART 1

Maintain close and mutually beneficial relationships with the South Suburban Parks and Recreation District, South Platte Working Group, High Line Canal Conservancy, Hudson Gardens, and other key partners that enable Littleton residents and visitors to enjoy a large quantity of high quality recreational assets and public open space.

POLICY



### Action HART 14

Pursue ways to close gaps in the existing local and regional trail systems to improve access and connectivity to jobs, education, fresh food, and health care, among others.

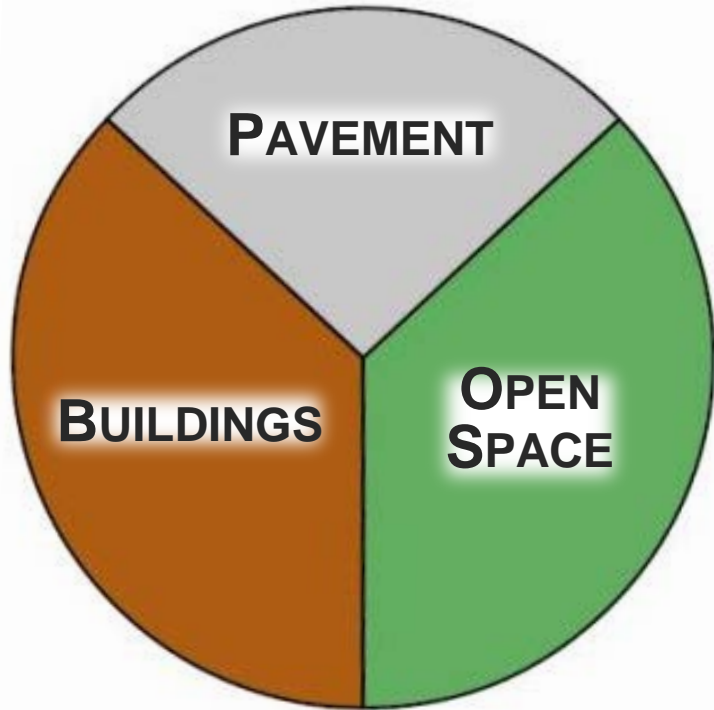
ACTION



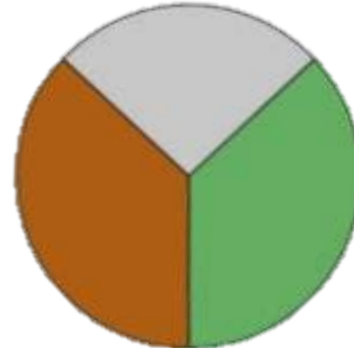
An aerial photograph of a city street, likely in a mountainous region. The street is lined with trees and buildings, and a few cars are visible. In the background, a range of mountains is visible under a cloudy sky. A teal banner is overlaid across the middle of the image, containing the text "COMPREHENSIVE PLAN".

# COMPREHENSIVE PLAN

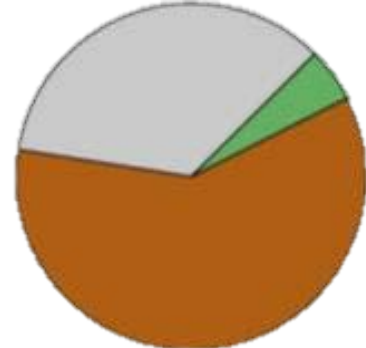
# Community Character – Unique Approach



**RURAL**



**SUB-URBAN**



**URBAN**

**WORKING DRAFT** Future Land Use and Character in Littleton, CO  
(August 7, 2019)

**Future Land Use and Character**

Green Residential	Suburban Business Park
Suburban Residential	Auto-Oriented Commercial
Suburban Residential Attached	Corridor Mixed Use
Suburban Residential Multi-Family	Urban Downtown Transition
Auto-Oriented Residential	Urban Downtown Mixed Use
Auto-Oriented Residential Attached	"NEW" Urban Downtown Main Street
Auto-Oriented Residential Multi-Family	Open Space
Residential Mix	Park
"RENAMEO" Mixed Character Core Neighborhood	Private Recreation
Suburban Commercial	Suburban Commercial

City Limits  
 Parcel Boundary  
 South Metro Fire Rescue Station

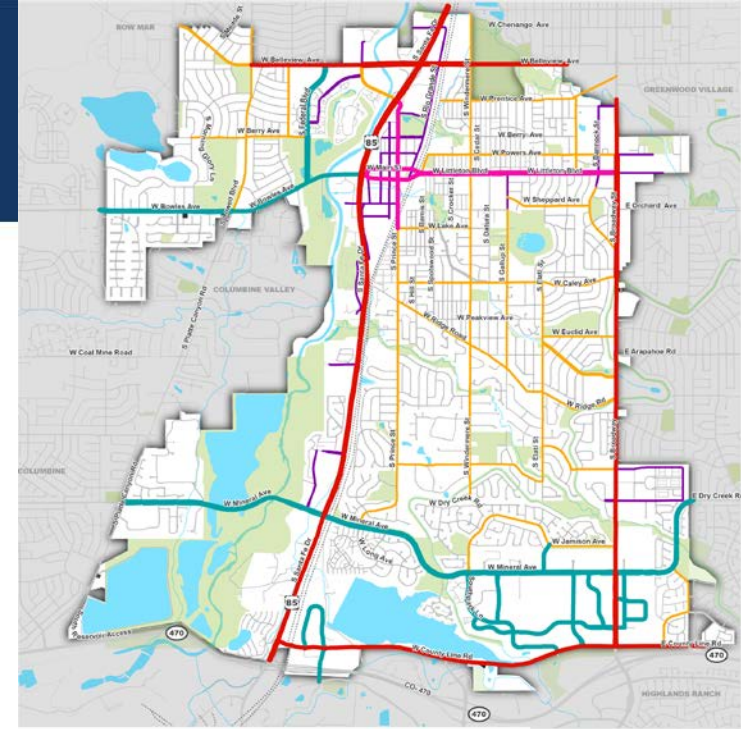


An aerial photograph of a city street, likely in a mountainous region. The street is lined with trees and buildings, and a few cars are visible. In the background, a range of mountains is visible under a cloudy sky. A teal banner with white text is overlaid on the image.

# TRANSPORTATION MASTER PLAN

# Complete Street Networks

- Recognize character - context-sensitive street type classification system
- Level of Service - policy for Auto/Freight, Transit, Bicycle, and Pedestrian networks
- It's a Network - Incorporate Overlays to identify which streets should prioritize certain modes
- Menu of potential projects
- Transportation Mobility Board



Proposed Street Types

- Commercial Corridor
- Suburban Connector
- Mixed Use/Downtown Main Street
- Mixed Use/Downtown Connector
- Neighborhood Connector
- Local Street

0.5 1 Miles

- City of Littleton
- Parks and Open Space
- Water
- Railroads



**CITY OF LITTLETON**  
**PROPOSED STREET TYPES**

# Critical Corridors

## Critical Corridor: Santa Fe Drive (US 85)

Santa Fe Drive is a state and federal highway that has long served as Littleton's connection to the rest of the region. Today, it is a mix of limited access expressway and commercial arterial. It carries a massive amount of traffic through the city and serves not just Littleton's north-south travel needs, but also as a primary route for traffic moving through the City. It will continue to serve this function in the future as a state highway.

The future of Santa Fe Drive is as the City's main north-south auto and freight route. Santa Fe Drive is in that the corridor is flanked on either side by premium transit (SRT) or active transportation (Greenway) facilities. These adjacent multimodal corridors allow Santa Fe Drive to be an auto mover.



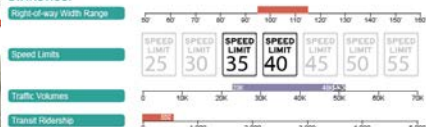
### STRATEGIES AND PROJECTS:

- Implement near term operational improvement projects:
  - Alternative intersection at Mineral Avenue
  - Safety and operational improvements at Bowles

## Critical Corridor: S Broadway

Broadway currently serves a number of uses. It is the most traveled transit corridor (beside the LRT lines), it serves as a regional automotive and truck route, and it provides direct property access to a mix of general commercial uses and even some single-family residential uses. Broadway is one of the most dangerous places to be as a pedestrian or bicyclist in the City, and its wide footprint and fast speeds mean that those who attempt to cross it are vulnerable to being struck by autos.

### STATISTICS:



### STRATEGIES AND PROJECTS:

The future of Broadway is as the City's eastern transit boulevard. Because the right-of-way is wide, Broadway is a prime candidate for exclusive transit lanes with Bus Rapid Transit service. Repurposing underutilized road space for transit will allow Broadway to evolve into an asset for Littleton, and will generate economic activity. Broadway has been identified as a Tier 1 BRT corridor by RTD and the City should dedicate resources to working with partner municipalities to take transit.

As the transit vision evolves, other modes, particularly carpooling, are also needed, as 48,000 vehicles currently carry as many as 48,000 vehicles amount of congestion.

Sacrificing space for transit vehicles will likely which could include alternative intersection intersection technology.

Special attention must be paid to the residents.

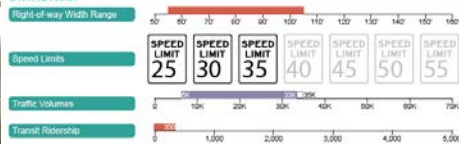
- Specific actions include:
- Partner with RTD, Centennial, and Arapahoe
  - Implement quick action projects to enhance
  - Implement quick action safety projects for

## Critical Corridor: Littleton Blvd / Main St / Alamo Dr / Bowles Ave

This corridor, which passes directly through downtown Littleton, currently serves as the main east-west route through the northern part of the City. At the heart of the City, Littleton Blvd and Main Street have a rich history as a place to go, a place to do business, and a place to be with the community.

The Comprehensive Plan envisions Littleton Boulevard transitioning to a mixed use corridor and extension of downtown, while respecting its history.

### STATISTICS:



### STRATEGIES AND PROJECTS:

The future of this corridor is as Littleton's Main Street. This corridor is many things to many people, but at its core it is the identity of Littleton. Extending the positive aspects of Downtown Littleton and Main Street to the east along Littleton Boulevard and reconnecting civic uses east of the railroad tracks will bring a better sense of connection with the downtown area and the rest of the community. With Littleton High School anchoring the east end of the corridor, the transformation of Littleton Blvd into a mixed use urban arterial will create a place that generates activity and contributes to the City's prosperity.

The corridor has the potential to serve as a true place, not just a place to move cars.

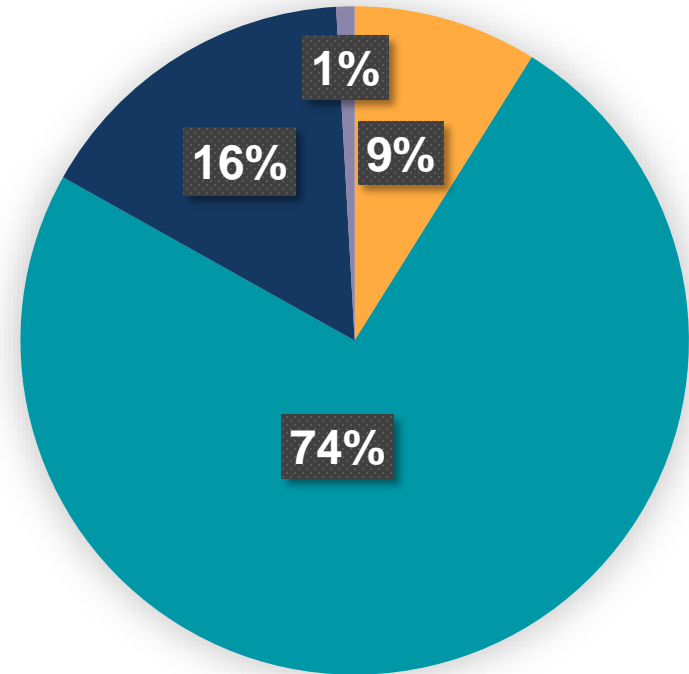
Specific Actions include:

- Conduct a corridor study that builds upon the foundation in this TMP:
  - Create an access control plan to address redevelopment concerns.
- Implement quick action projects to enhance transit speeds and reliability.
- Implement quick action safety projects for pedestrians, bicyclists, and motorists.
- Advocate for increased transit frequency along the corridor with RTD.
- Enhance bicycle connections to the Powers Avenue bicycle priority street to the north.
- Enhance the pedestrian environment, particularly on the east end.
- Conduct a Downtown Mobility Plan and Streetscape Plan.



# All Potential Projects

- Active Transportation
- Auto Capacity
- Auto Operations and Safety
- Transit



# Implementation Planning

Total need: \$678 million

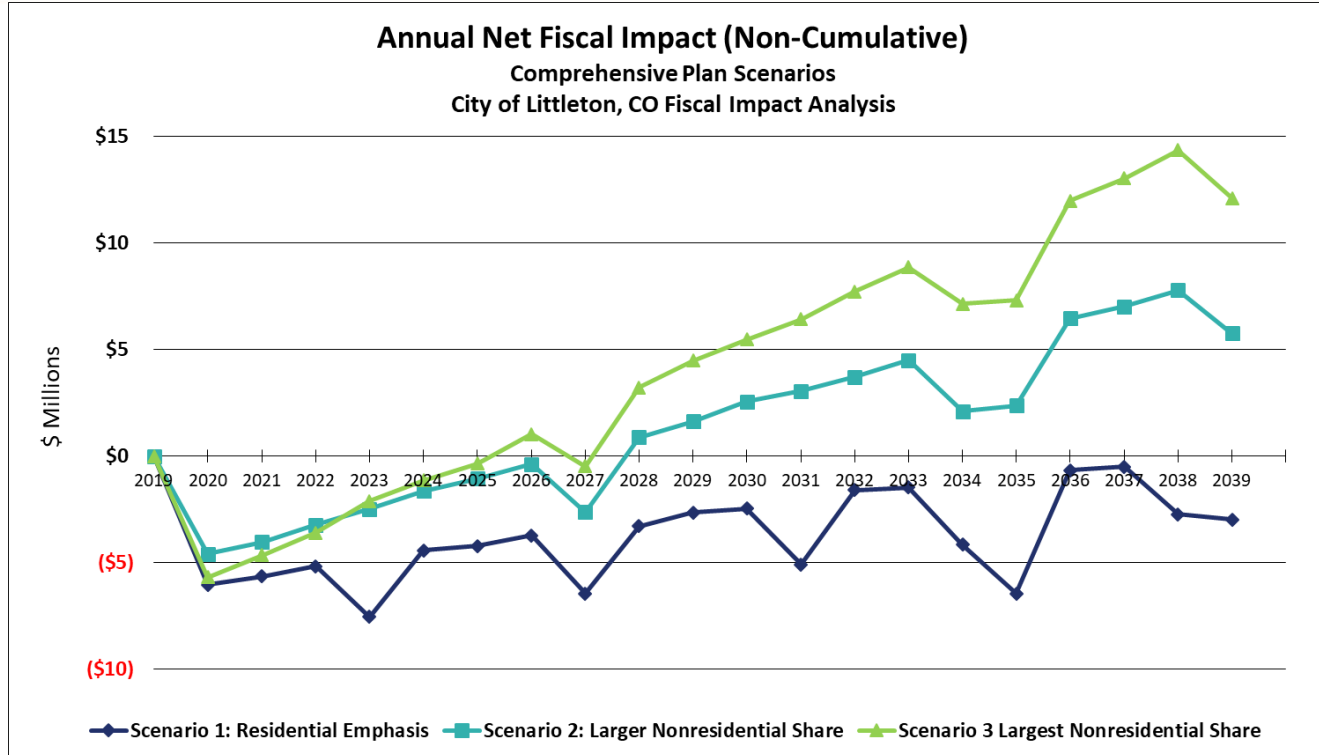
City contribution assuming Regional and Federal Partnerships:

- **Max Federal Scenario:** new City of Littleton Funding Needed **\$188 M**
- **Moderate Federal Scenario:** new City of Littleton Funding Needed **\$252 M**

How do we pay for it?



# Annual Net Fiscal Impacts



# What's Next?

---

**Envision Littleton  
20 Year Vision**



**Work Plan  
1-2 Year Priorities**



**Strategic Plan  
3-5 Year Priorities**

Comprehensive  
Plan

Council Work  
Plan

Strategic Plan

---

# Our Culture is Evolving – More Strategic

---

The Stars are Aligning Again:

- Governing Body Support
  - Executive Support
  - Timing
  - Departmental Support
  - Resources (Personnel, Financial, Time, Technology)
  - Ready to Involve the Community
-



An aerial photograph of a city street in Littleton, Colorado, with mountains in the background. A teal banner is overlaid across the middle of the image.

# QUESTIONS & DISCUSSION

Kathleen Osher  
City Manager's Office  
Manager of Innovation  
& Performance Excellence  
[kosher@littletongov.org](mailto:kosher@littletongov.org)  
303.795.3755