



Greenwood-Arapahoe-Denver Terminal Project
Briefing Meetings
January 2020

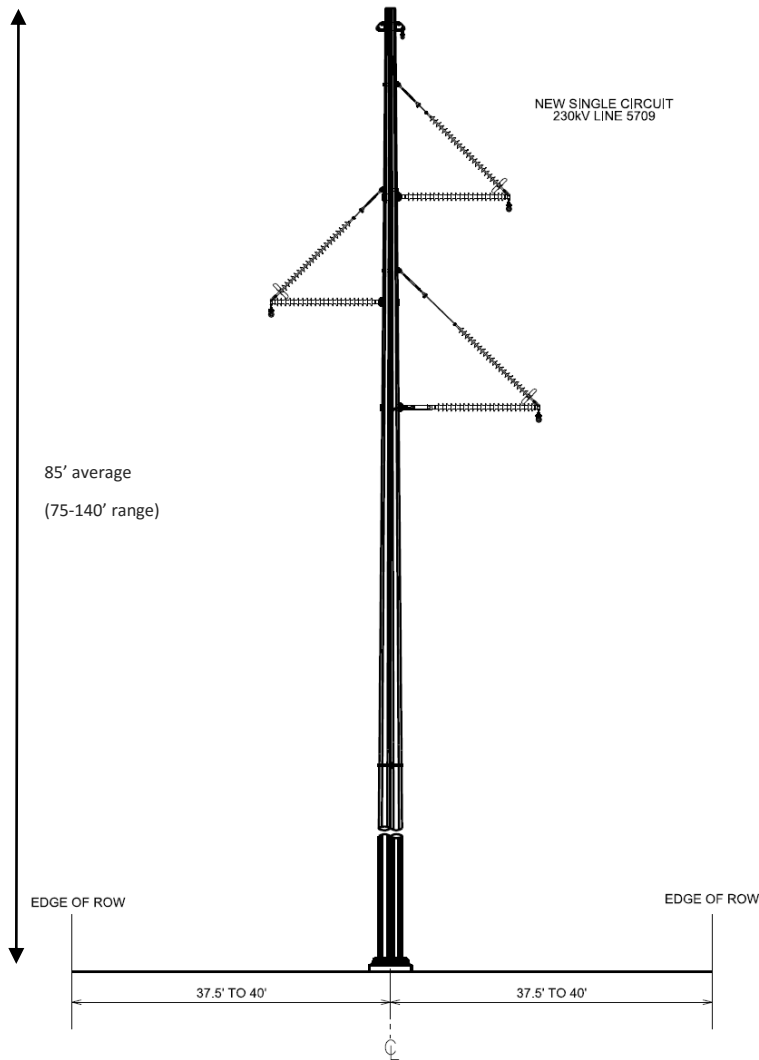
Purpose and Need

- Reliably accommodate the Colorado Energy Plan Portfolio
 - 1,100 MW of new wind power
 - 700 MW of new solar power
 - 275 MW of energy storage
 - CEP approved by Colorado Public Utilities Commission in 2018 (Proceeding No. 16A-0396E)
- Alleviate potential overload of Denver Metro area transmission system
- Enhance customer reliability and strengthen the grid

Overview

- **What:** Rebuild 15.4 miles of existing transmission facilities to 230 kV
- **How:** By rebuilding and/or reconductoring the existing facilities within existing right-of-way and easements
- **Where:** From Greenwood Substation to the Denver Terminal Substation, crosses six communities

Community	Miles Crossed	Community	Miles Crossed
Centennial	3.5	Englewood	3.5
Greenwood Village	0.2	Sheridan	1.7
Littleton	0.9	Denver	5.6



Segment 1

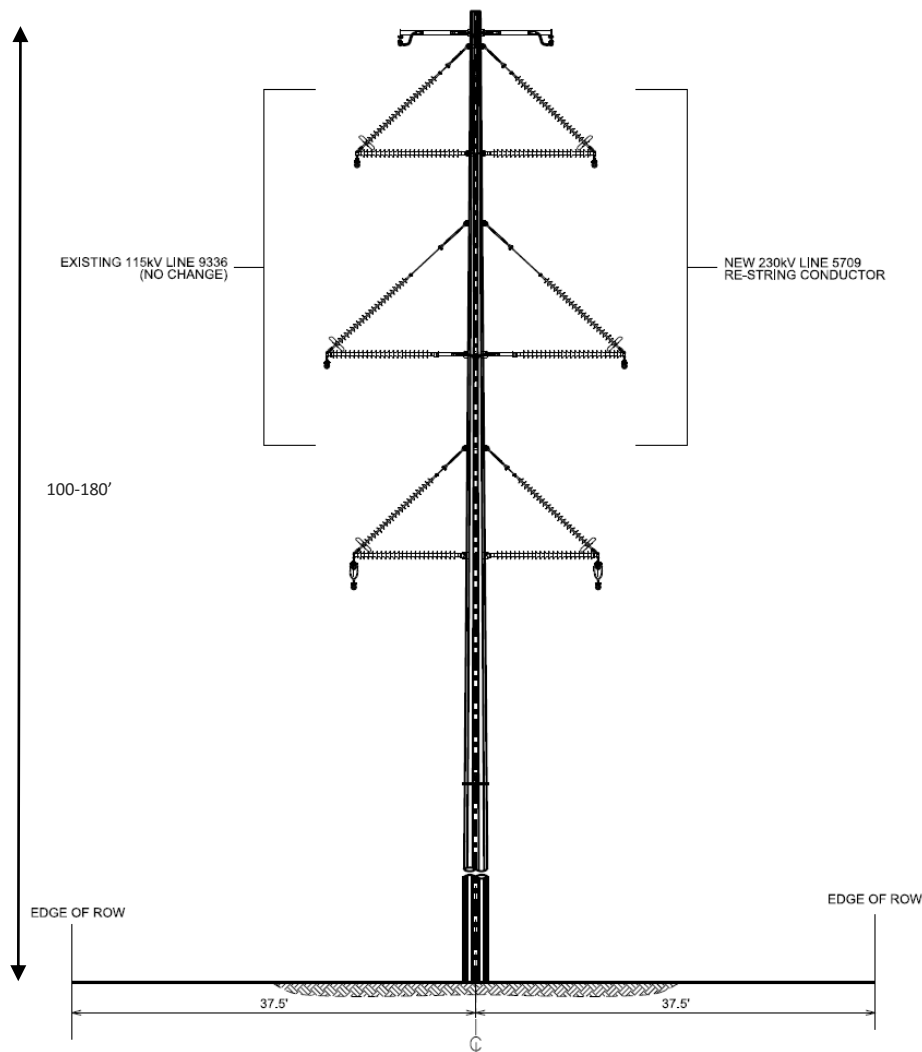
Rebuild 5.6 miles of existing 115 kV double-circuit lattice to 230 kV single-circuit monopole (tower for tower replacement).

Existing 115 kV structures are approx. 85 feet tall above ground level; new 230kV structures to average 85 feet tall.

Cities crossed:

- Centennial
- Greenwood Village
- Littleton

The information contained herein is demonstrative only, believed to be accurate and suitable for limited, internal Xcel Energy use only. Maps are not to scale. All matters depicted including but not limited to utility facilities, locations and materials are preliminary only and subject to change without notice. Xcel Energy/Public Service Company of Colorado makes no warranty as to the accuracy or suitability of any information contained herein for use by third parties for any particular purpose. The accuracy of this map and the information depicted should be verified prior to use. The user shall assume all risk and responsibility for any and all damages, including consequential damages, which may arise from the user's reliance on this information.



Segment 2

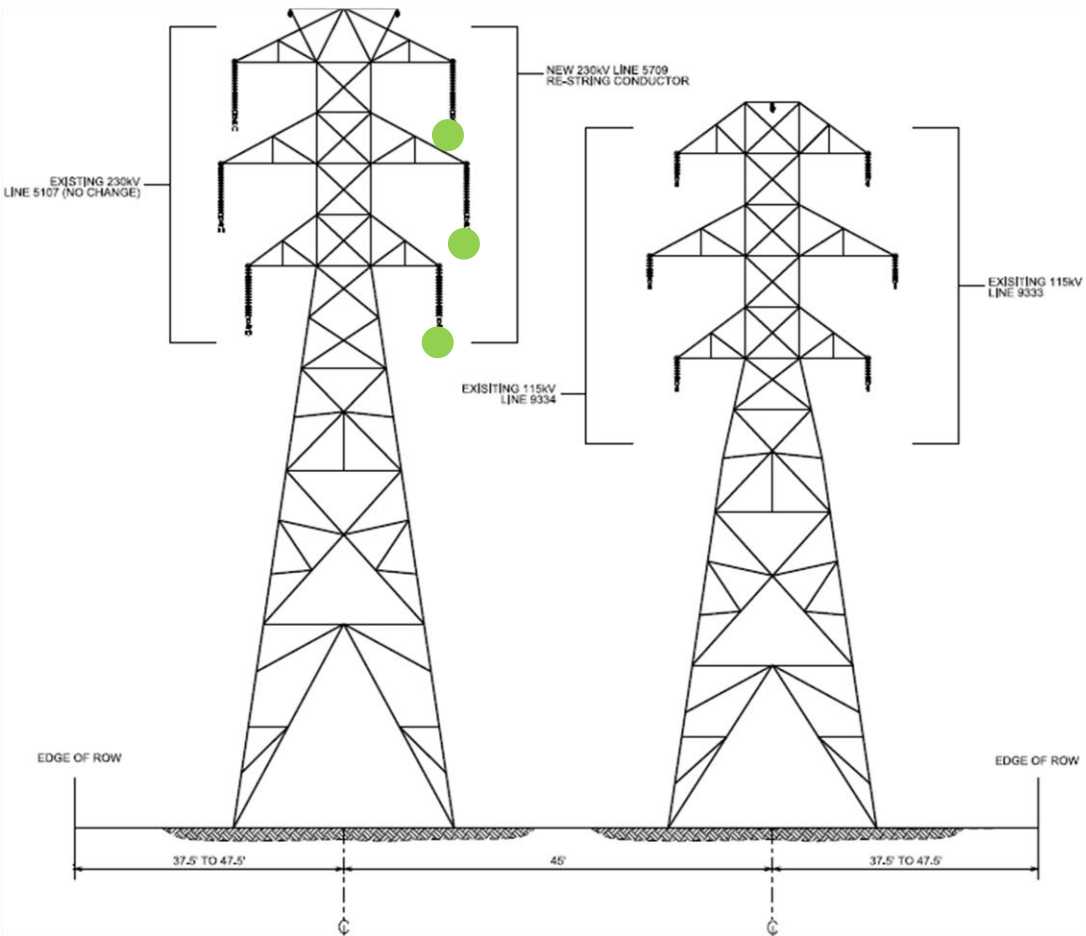
Remove four single-circuit 115 kV lattice structures for 0.5 mile; replace with four double-circuit monopole structures (230 kV on north side, 115 kV on south side).

Existing 115 kV structures are approx. 85 feet tall above ground level; new 230kV structures to be 100-180 feet tall.

Cities crossed:

- Littleton
- Englewood

The information contained herein is demonstrative only, believed to be accurate and suitable for limited, internal Xcel Energy use only. Maps are not to scale. All matters depicted including but not limited to utility facilities, locations and materials are preliminary only and subject to change without notice. Xcel Energy/Public Service Company of Colorado makes no warranty as to the accuracy or suitability of any information contained herein for use by third parties for any particular purpose. The accuracy of this map and the information depicted should be verified prior to use. The user shall assume all risk and responsibility for any and all damages, including consequential damages, which may arise from the user's reliance on this information.



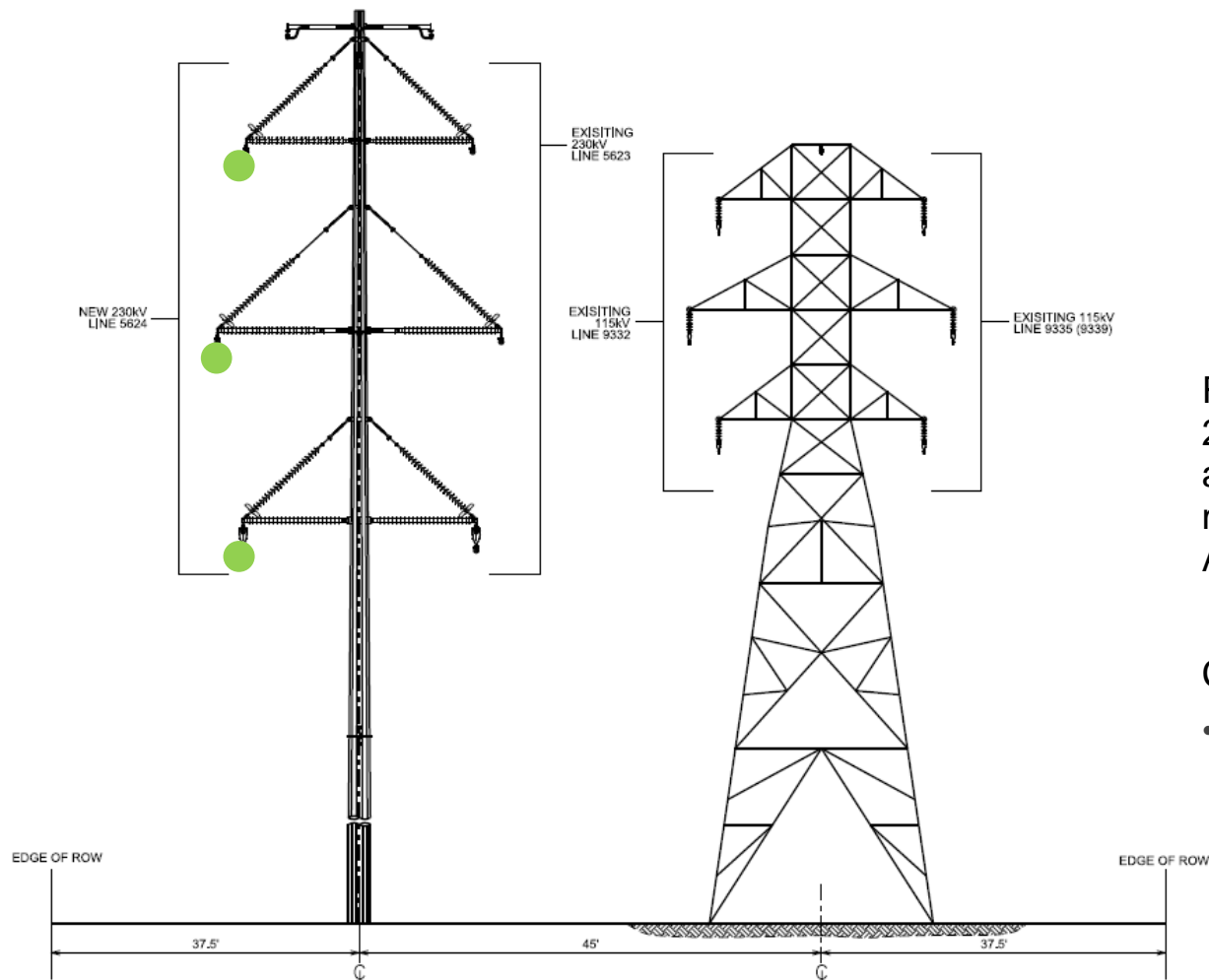
Segment 3

Reconductor 3.4 miles of existing 115 kV/230 kV, replacing the 115 kV circuit with 230 kV.

Cities crossed:

- Englewood
- Sheridan
- Denver

The information contained herein is demonstrative only, believed to be accurate and suitable for limited, internal Xcel Energy use only. Maps are not to scale. All matters depicted including but not limited to utility facilities, locations and materials are preliminary only and subject to change without notice. Xcel Energy/Public Service Company of Colorado makes no warranty as to the accuracy or suitability of any information contained herein for use by third parties for any particular purpose. The accuracy of this map and the information depicted should be verified prior to use. The user shall assume all risk and responsibility for any and all damages, including consequential damages, which may arise from the user's reliance on this information.



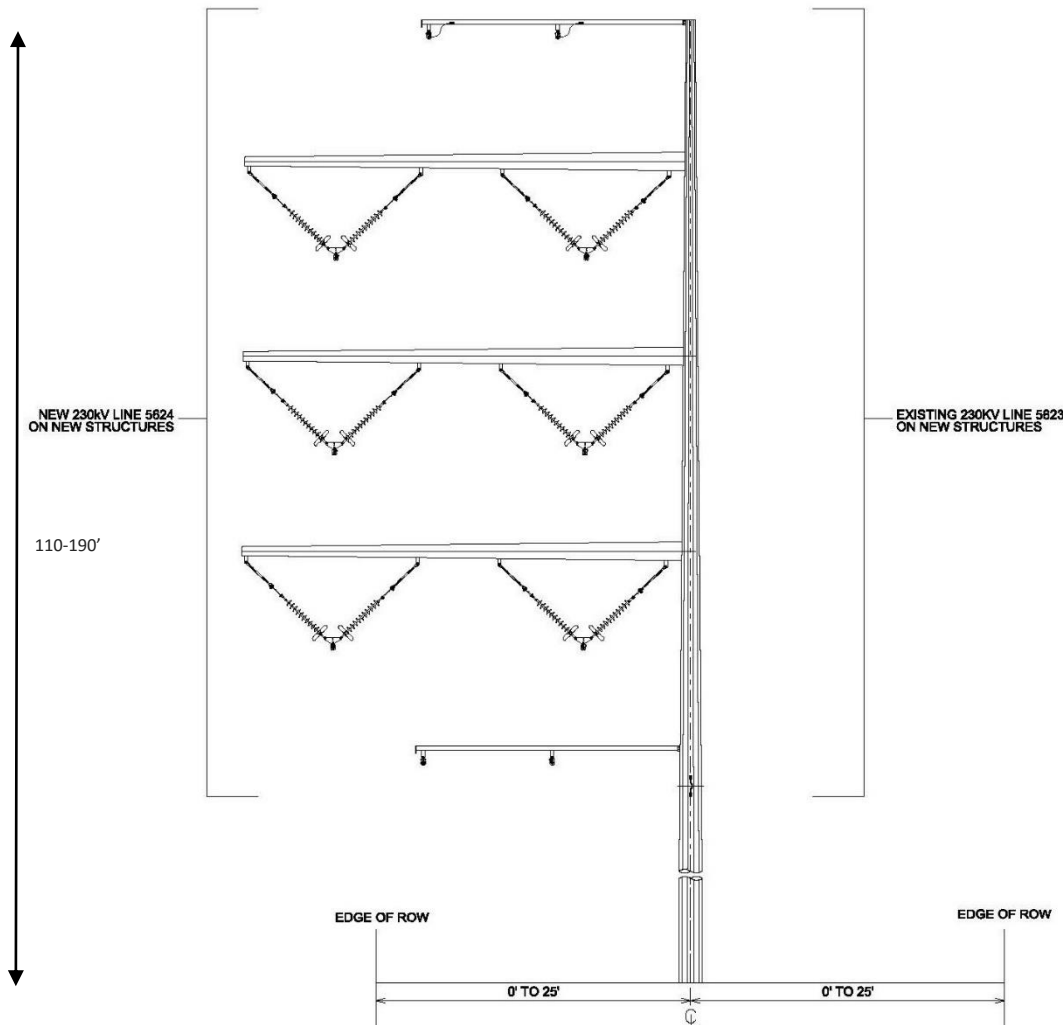
Segment 4

Re-energize the existing 115 kV to be 230 kV between Arapahoe Substation and Denver Terminal Substation for 2.0 miles (new structures needed at Arapahoe and South Substations).

Cities crossed:

- Denver

The information contained herein is demonstrative only, believed to be accurate and suitable for limited, internal Xcel Energy use only. Maps are not to scale. All matters depicted including but not limited to utility facilities, locations and materials are preliminary only and subject to change without notice. Xcel Energy/Public Service Company of Colorado makes no warranty as to the accuracy or suitability of any information contained herein for use by third parties for any particular purpose. The accuracy of this map and the information depicted should be verified prior to use. The user shall assume all risk and responsibility for any and all damages, including consequential damages, which may arise from the user's reliance on this information.



Segment 5

Rebuild 3.9 miles of the existing monopole single-circuit 230 kV transmission line to monopole double-circuit 230 kV.

Cities crossed:

- Denver

The information contained herein is demonstrative only, believed to be accurate and suitable for limited, internal Xcel Energy use only. Maps are not to scale. All matters depicted including but not limited to utility facilities, locations and materials are preliminary only and subject to change without notice. Xcel Energy/Public Service Company of Colorado makes no warranty as to the accuracy or suitability of any information contained herein for use by third parties for any particular purpose. The accuracy of this map and the information depicted should be verified prior to use. The user shall assume all risk and responsibility for any and all damages, including consequential damages, which may arise from the user's reliance on this information.

Schedule

Design and Engineering Studies:	May 2019 – July 2021
Jurisdictional Briefings:	September 2019 – January 2020
Public Outreach and Engagement:	February – March 2020
State and Local Permitting:	March – July 2020
Construction:	July 2021 – December 2022
Anticipated In-Service Date:	December 2022

Public Outreach and Engagement

Outreach

- Project website
- Newsletters/Mailers
- Fact sheets
- News releases
- Telephone information line/Email address

Public Outreach and Engagement

Engagement Opportunities

- Elected official and staff briefings
- Pre-application meetings
- Other key community leader briefings
- Public open house meetings

Project Contacts

Larry Claxton

Siting and Land Rights, Principal Agent

(303) 571-7089

larry.claxton@xcelenergy.com

Tom Henley

Community Relations for South Denver Metro

(303) 671-3901

tom.henley@xcelenergy.com

Tyler Smith

Community Relations for Denver City and County

(303) 294-2628

tyler.n.smith@xcelenergy.com

