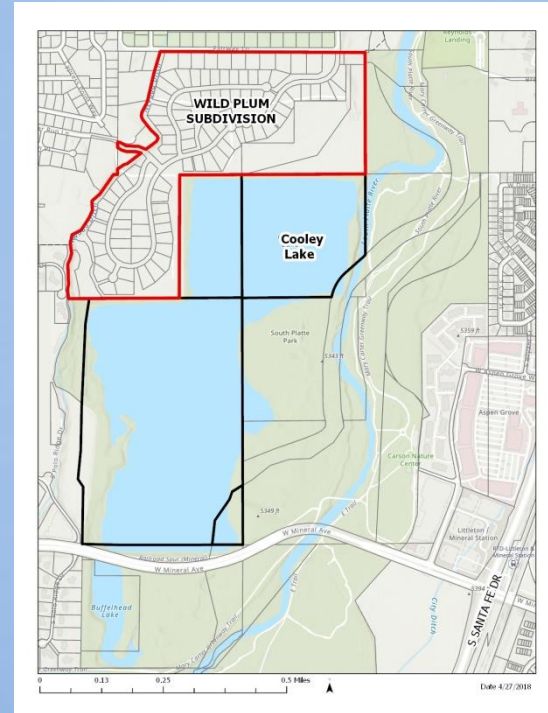




Drainage Easements on Cooley Lake Property

Wild Plum Subdivision & Cooley Lake

- Subdivision in Town of Columbine Valley
- Pre-development drained to Cooley Lake
- Maintain drainage patterns

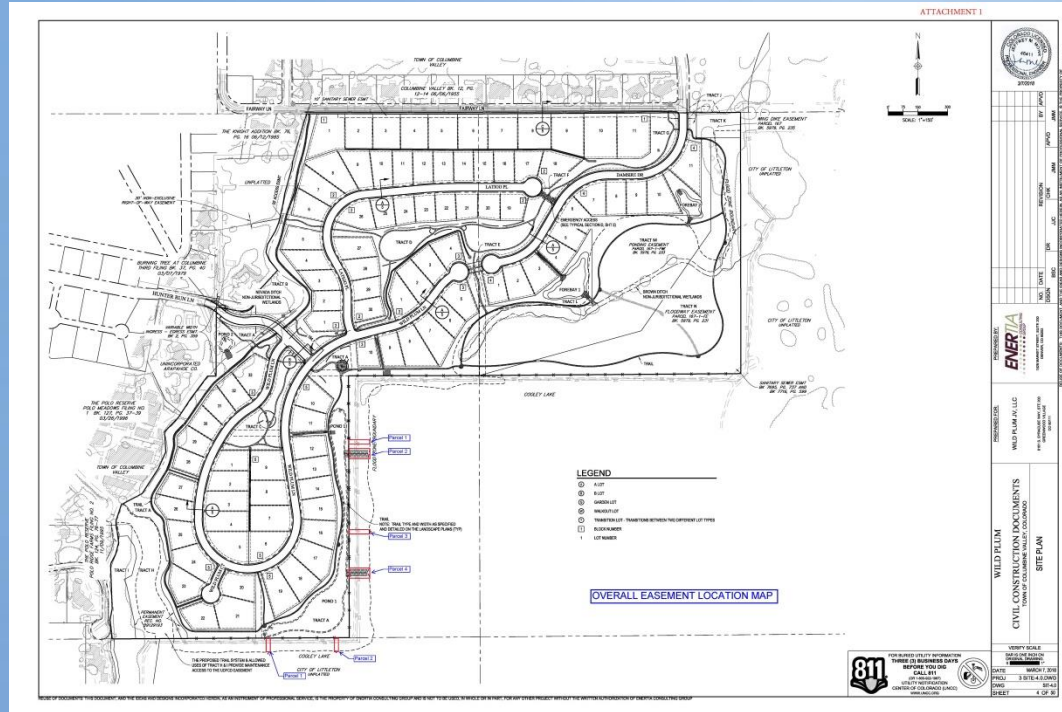


Cooley Lake

- Property owned by the City of Littleton
- Managed by SSPRD
- South Platte Park



Cooley Lake Easements



Cooley Lake Easements

- Technical aspects reviewed by Public Works, SSPRD, and Town of Columbine Valley
- UDFCD design criteria
- Easements would be granted to Wild Plum Metro District
- No changes to public or general access

Cooley Lake Easements

- Study Session – June 26, 2018
 - Water Quality Impacts
 - Maintenance in the event of default

Water Quality

- Design Aspects
 - Filter area required 4,077 s.f., /provided 78,710 s.f.
 - UDFCD best practices
 - Disconnecting impervious areas
 - Drains to vegetation and landscape areas
- Operation and Maintenance Plan
 - Restrict use of fertilizers and pesticides in and around pond
 - Dog leash requirements/pet waste collection stations

Pond Maintenance

- Operations and Maintenance Plan
 - Wild Plum Metro District
 - Town of Columbine and Metro District
 - Amended IGA
 - Town of Columbine will assume maintenance in the event of default

Recommendation

- Recommend approval of the drainage easements on the Cooley Lake property for the Wild Plum Subdivision
 - Design and O&M plan utilize best practices
 - Town of Columbine/Metro District IGA protects on-going maintenance issues

Council Action

- Staff recommendation:
 - Approve the resolution granting drainage easements on the Cooley Lake property for Wild Plum Subdivision