



Envision LITTLETON

Our Community. Our Future.

An innovative community engagement
effort to define a vision for our future

Today's Agenda

- **Transportation Master Plan**

- Visioning process recap
- Strategic framework
- Draft mission statement
- Draft goals
- Next steps

- **Comprehensive Plan**

- Another character factor
 - Start of future land use map
 - Policy considerations
 - Areas for discussion
 - Next steps
-

What is Envision Littleton?



GUIDING PRINCIPLES

INFORMING
POLICY

PROTECTING THE
COMMUNITY'S
VALUES

ENSURING LITTLETON
NEVER LOSES ITS
HEART AND SOUL



COMPREHENSIVE PLAN

A MUNICIPALITY'S ROAD MAP
FOR THE FUTURE



When will decisions be made?

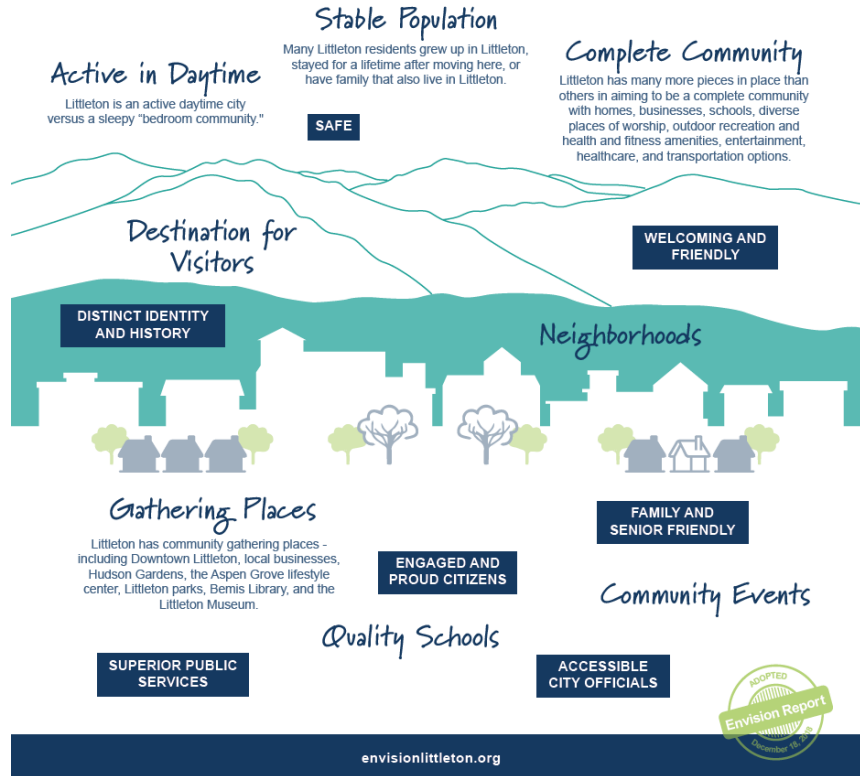


An aerial photograph of a city street, likely in Denver, Colorado, showing a multi-lane road with traffic, surrounded by trees and buildings. In the background, a range of mountains is visible under a cloudy sky. A large teal banner is overlaid across the middle of the image, containing the title text.

TRANSPORTATION MASTER PLAN

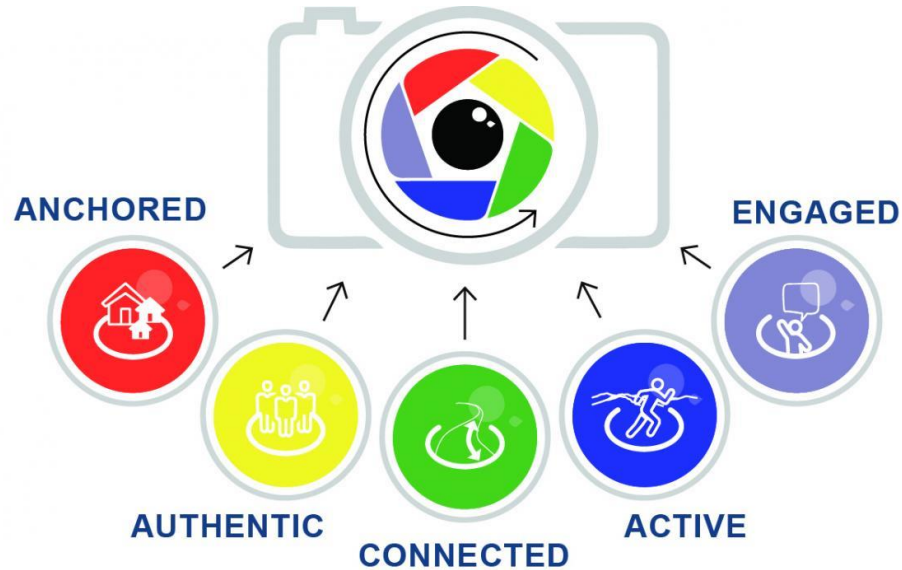
Vision, Mission, Goals, Objectives

Envision Littleton Guiding Principles



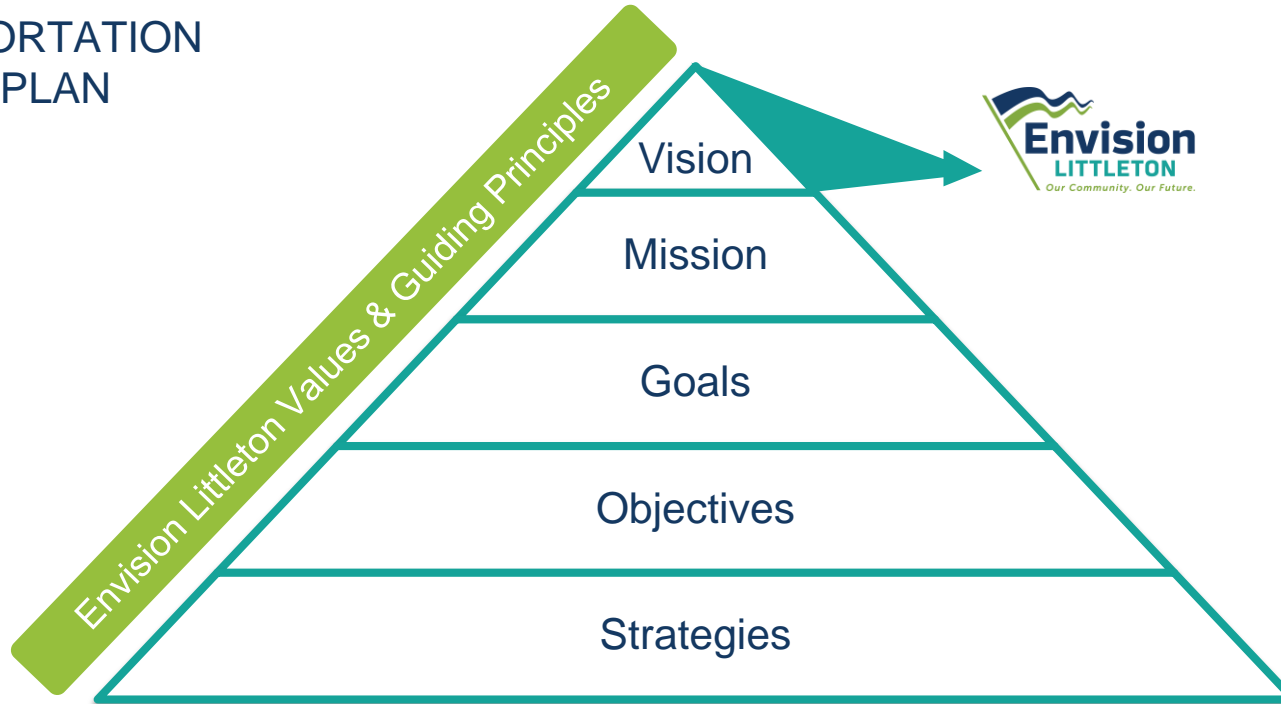
- Maintain integrity
- Protect cherished natural setting
- Ensure reinvestment meets local expectations
- Safer and more accessible for everyone
- Achieve a higher standard
- Secure the long-term financial sustainability

Envision Littleton Guiding Principles



Strategic Framework

TRANSPORTATION MASTER PLAN



Strategic Framework: Defining the Terms

VISION

The unique future state we hope to create. How the public will be better off because of our plans. [COMPLETE]



MISSION

What we are doing, for whom and why? The purpose of the plan.

GOAL

Broad qualitative statements regarding what you are trying to achieve. They bring more definition to the Vision.

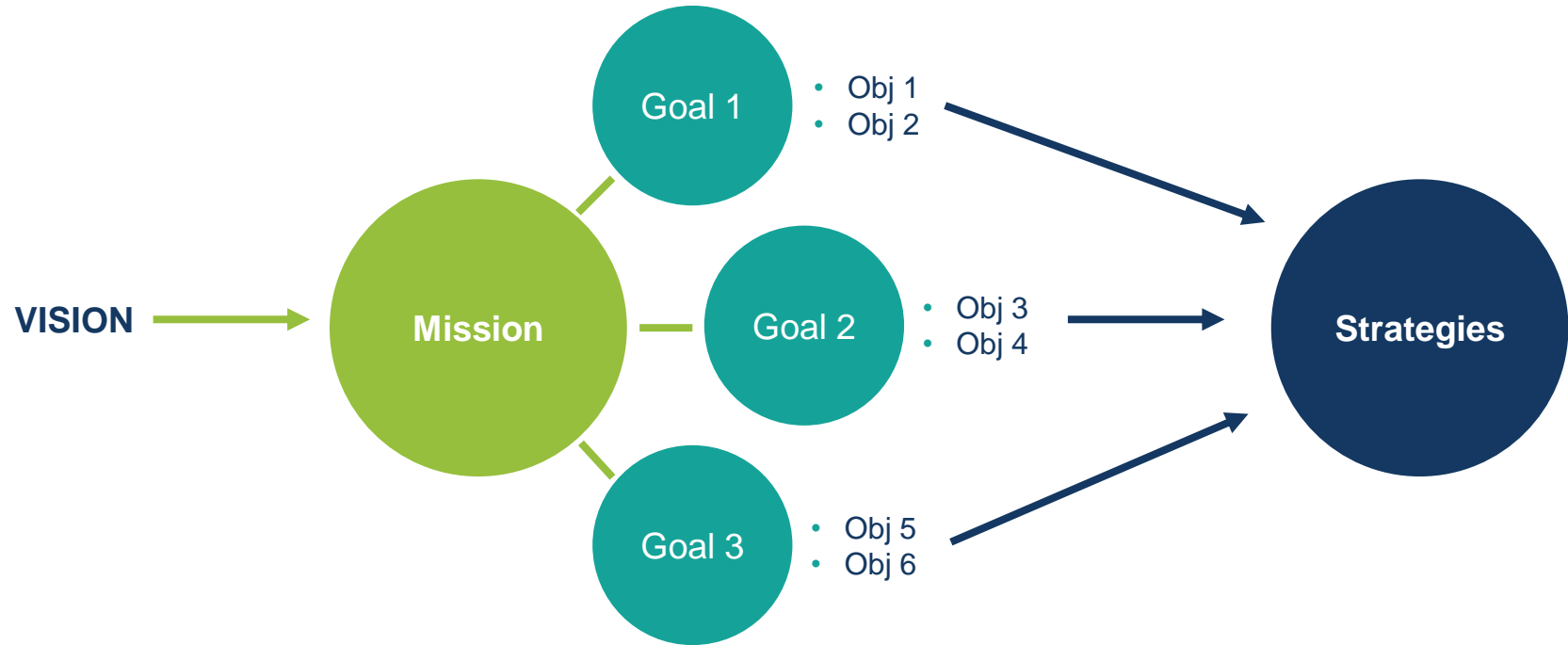
OBJECTIVES

Specific, time limited, quantifiable desired achievements in support of the goals.

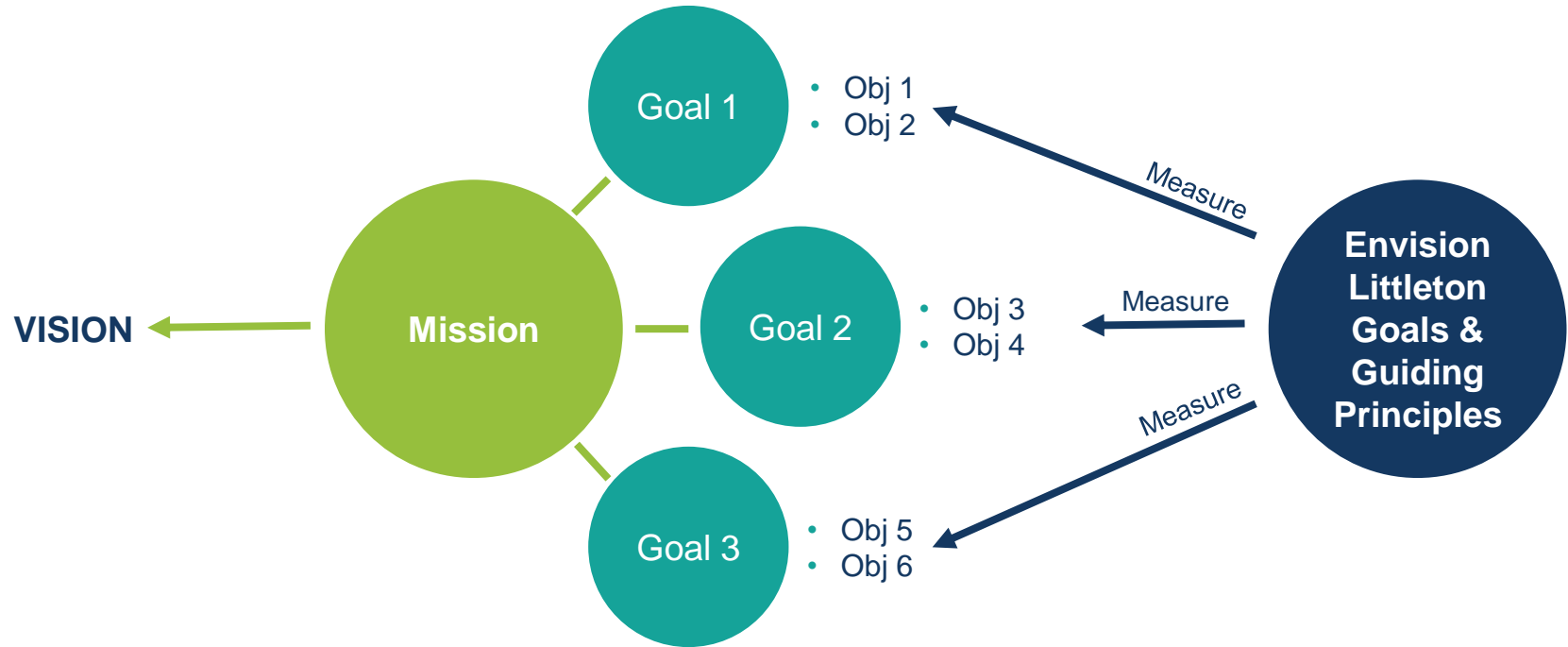
STRATEGIES

Actions we will be taking.

V/M/G/O/S



Performance



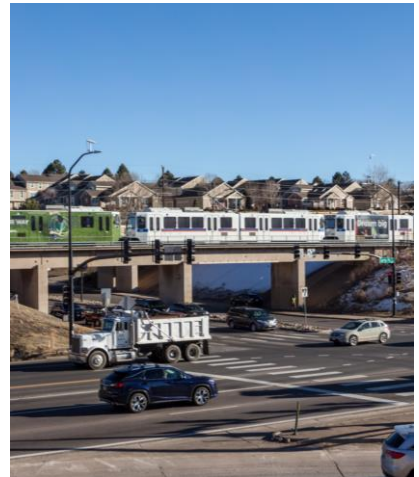
Visioning Process

- Department interviews
 - Finance
 - Police
 - Community Development
 - Economic Development
 - Communications
 - Information Technology (IT)
- Public Works Workshop

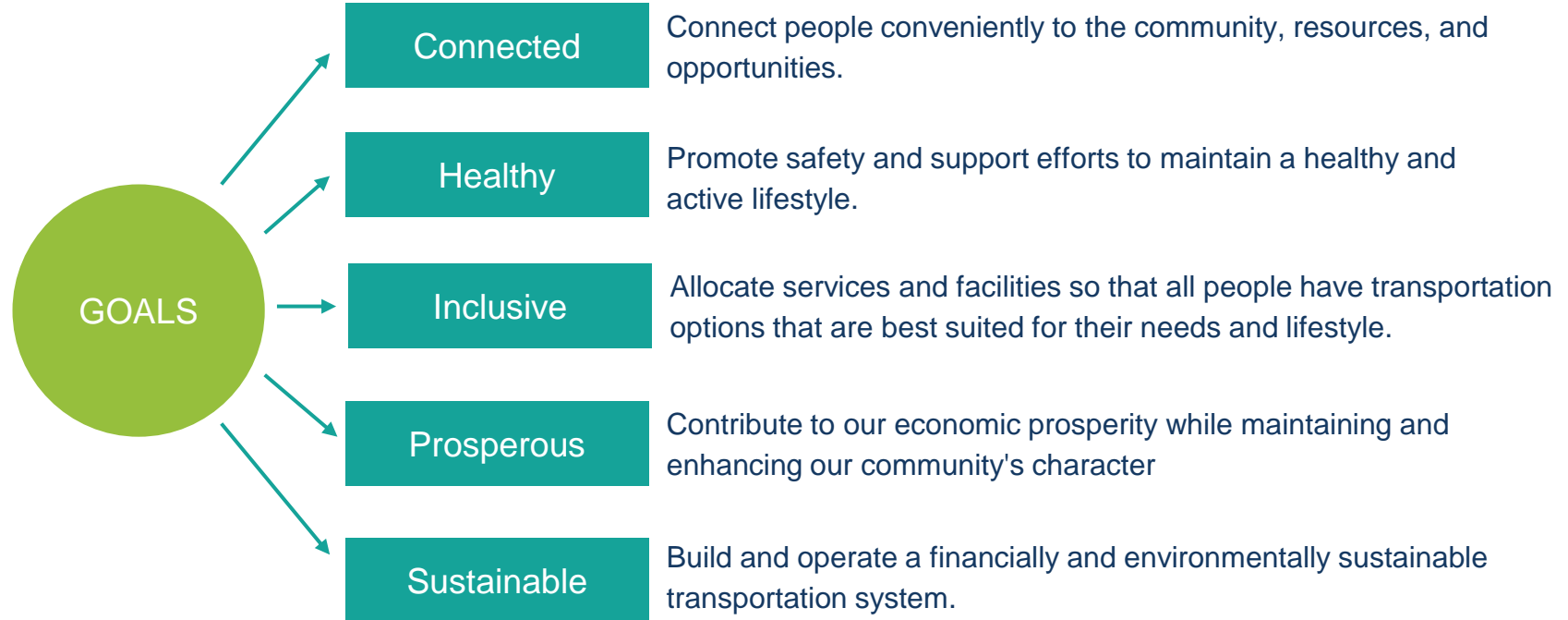


Draft Mission Statement

Littleton will create a transportation system that supports its vision of the future through regional leadership and responsible stewardship of its transportation systems, policies, programs and services.



Goals



Sampling of Objective Categories

- Delay/traffic
- Reliability
- Parking
- Regional leadership
- User cost
- Pressures from regional growth
- Information sharing and communication
- Safety
- Air quality
- Comfort
- Revenue
- Budget
- Completeness of networks
- Flexibility

What We've Heard

"I would like people to be nice when they're going someplace."

"We know we're going to have big expenses coming up, and we don't have the funding sources for those."

"The traffic, as is, is unsustainable, in 20 years it will be worse. It has to be addressed."

"The goal is a transportation system that supports a community where people want to live, work, and play. That's an enabler for quality of life and it's an enabler of job creation in the city."

"Change is going on around us. Do we want it to happen to us, or do we want to participate? It's about time -- we need to be proactive and not reactive"

"I'm pretty patient, but sometimes I get a little crazy when I'm sitting in traffic."

"I could think of no other city I would wish to live."

"Happier drivers."

"We can't just solve today's problems - we have to solve tomorrow's problems."

An aerial photograph of a city street, likely in a mountainous region. The street is lined with trees and buildings, and a few cars are visible. In the background, a range of mountains is visible under a cloudy sky. A large teal banner is overlaid on the image, containing the text "COMPREHENSIVE PLAN" and "Future Land Use and Character".

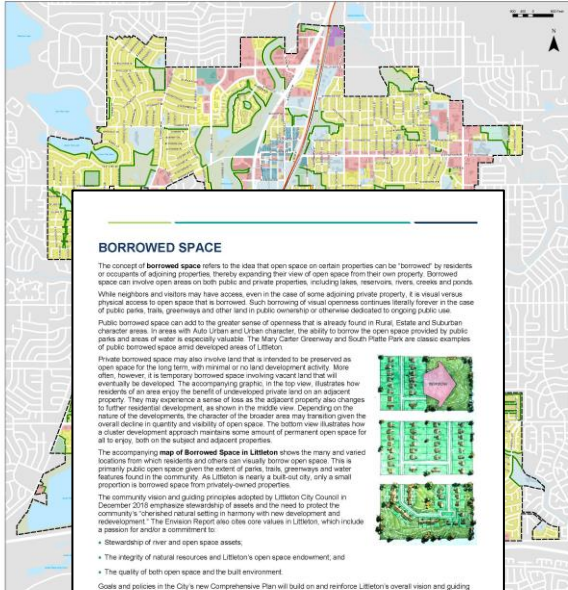
COMPREHENSIVE PLAN

Future Land Use and Character

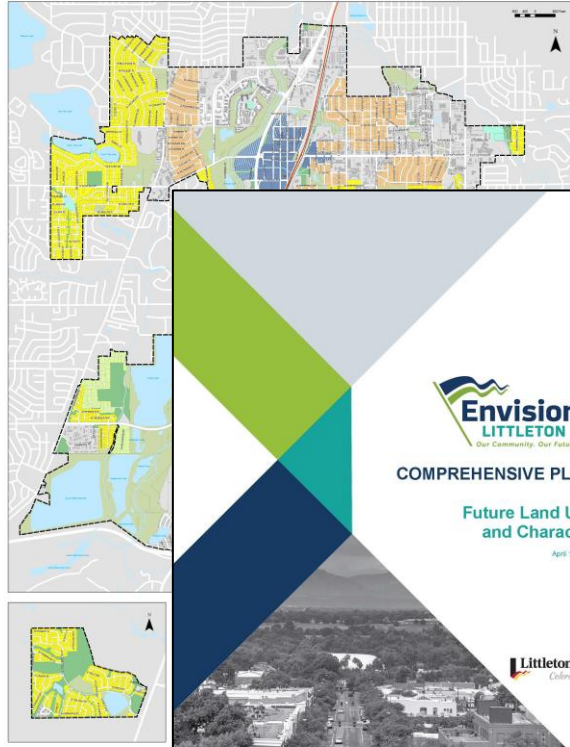
KKC Maps and Handouts

DRAFT

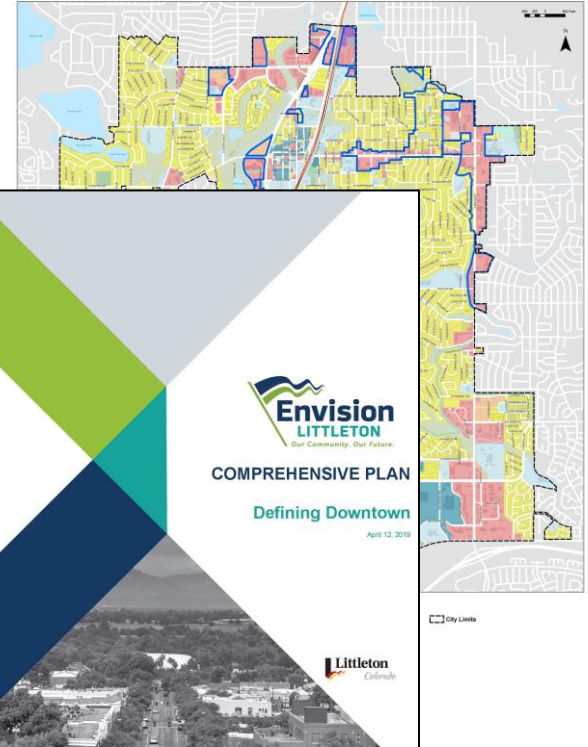
Borrowed Space in Littleton, CO (As of Summer 2018)



WORKING DRAFT Future Land Use and Character in Littleton, CO (April 2019)

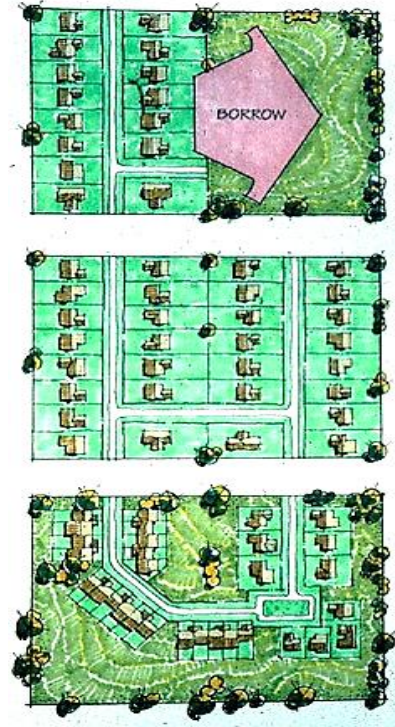


WORKING DRAFT Areas for Discussion - Future Land Use Outlook (April 2019)



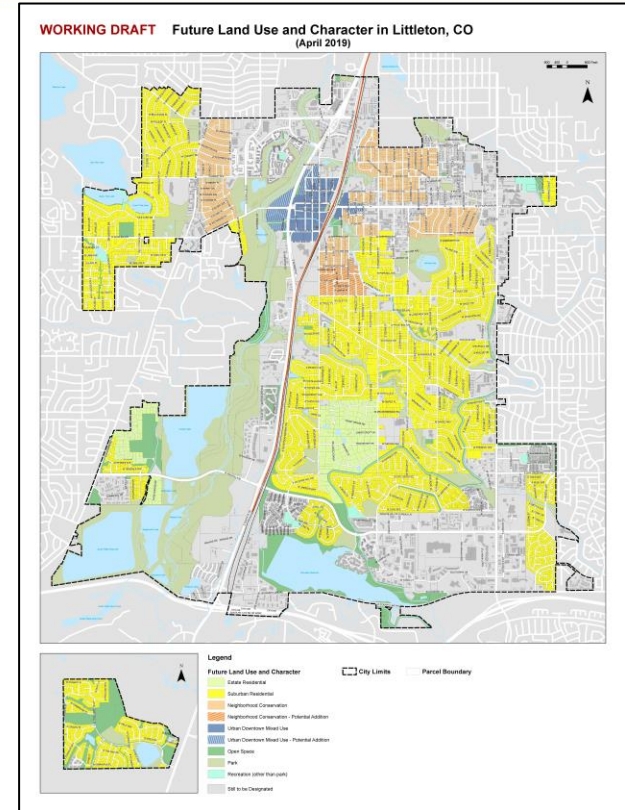
“Borrowed” Space

- Visual borrowing of open space on adjacent property
- Take “ownership” of it, both public and private
- Sense of loss when private space later developed

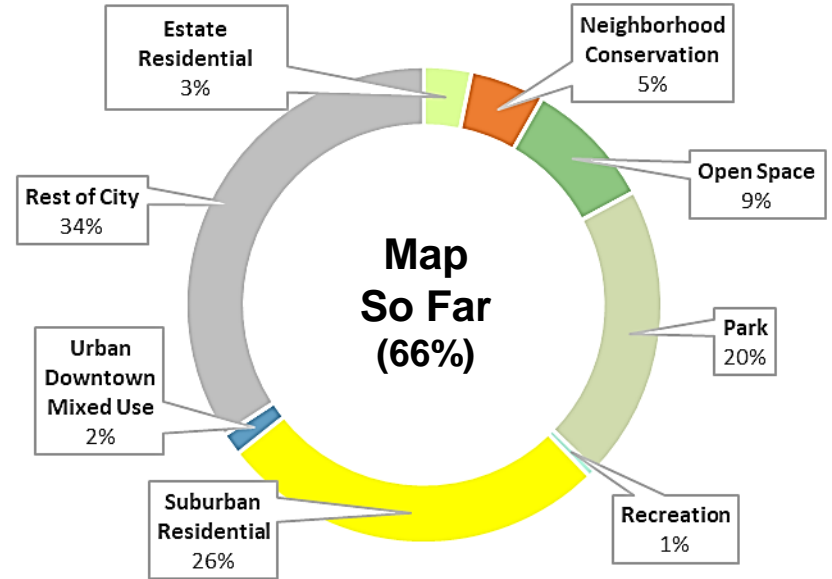
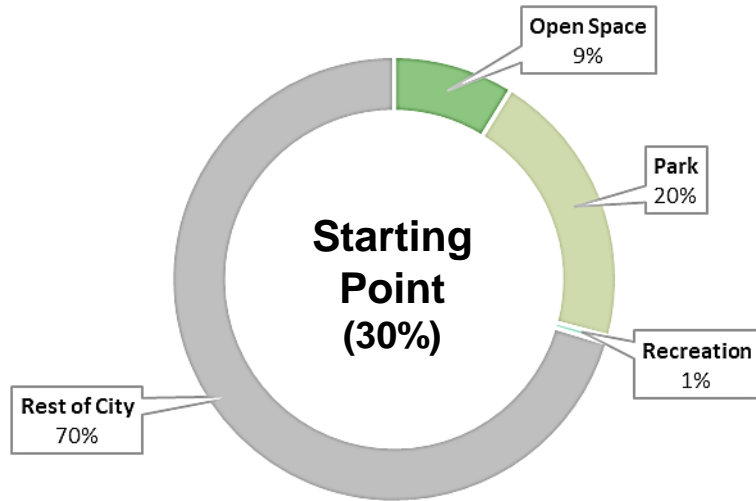


Future Land Use and Character

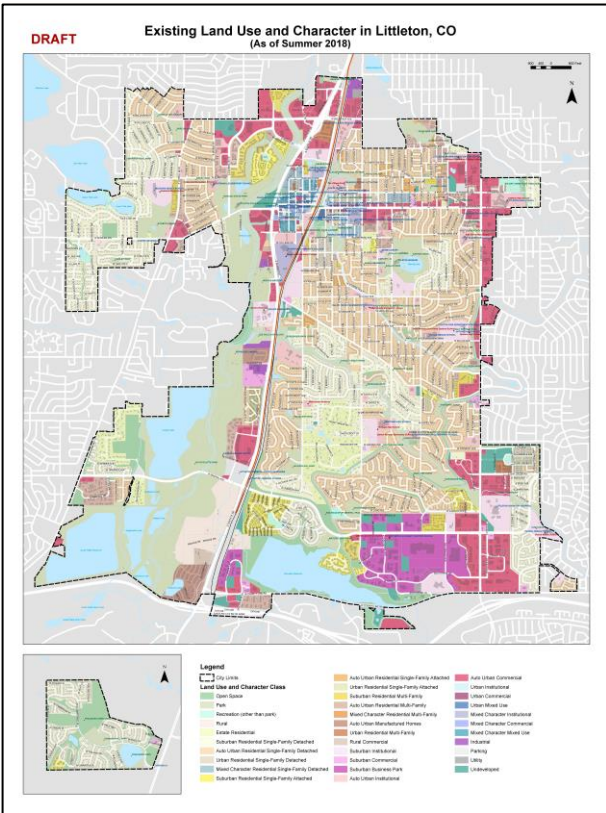
- Start with four categories on preliminary map:
 - Estate Residential
 - Suburban Residential (only single-family detached for now)
 - Urban Downtown Mixed Use
 - Neighborhood Conservation
- Along with Park, Recreation and Open Space, fills in 66% of city limits (plus rights-of-way, utilities)



Allocation So Far

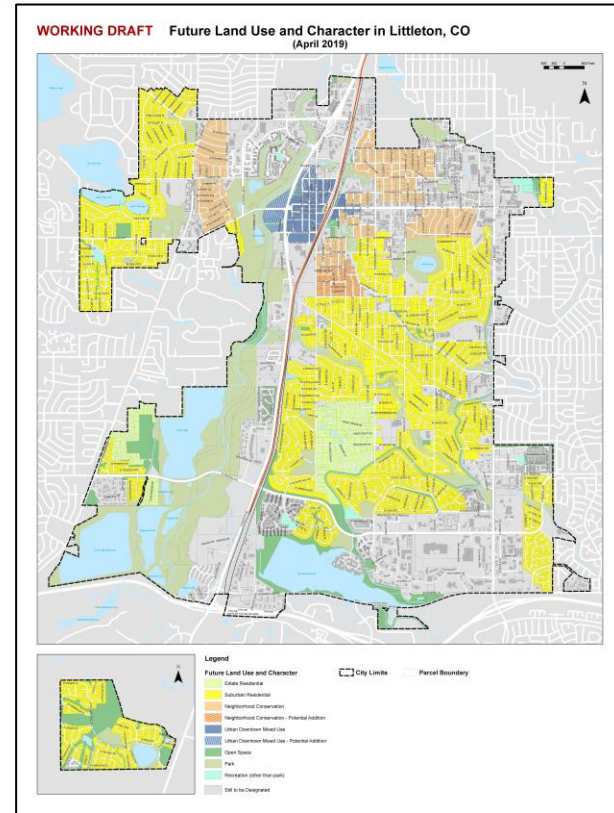


Auto Urban Now Suburban?

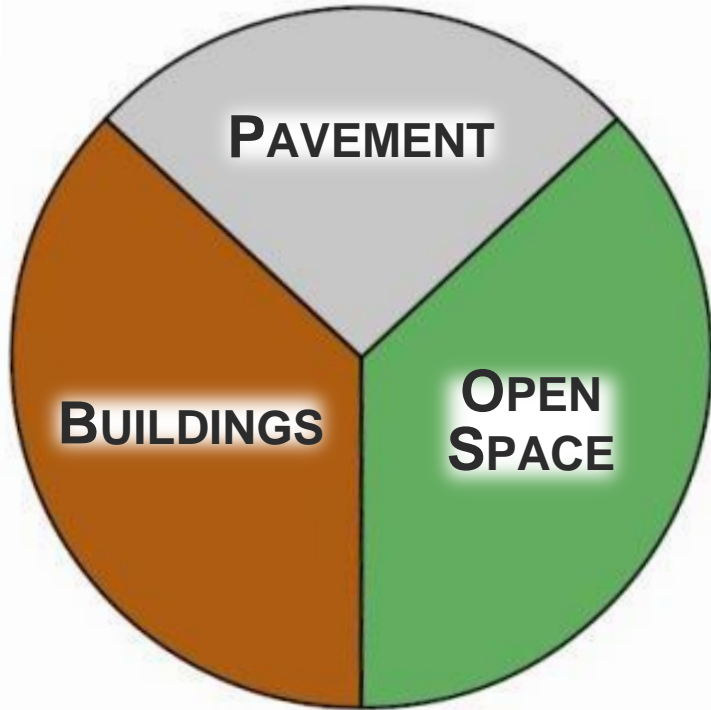


- Not “pure” Suburban, but:*
- Lot sizes 8,000+ sq. ft.
 - Significant area of lot in green versus structures and hard surfaces
 - Extent of landscaping and mature tree volume
 - Front garages and driveways ubiquitous across city

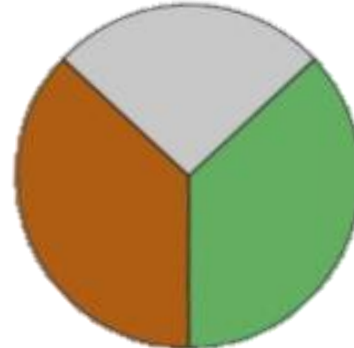
*“Suburban” character
within local context*



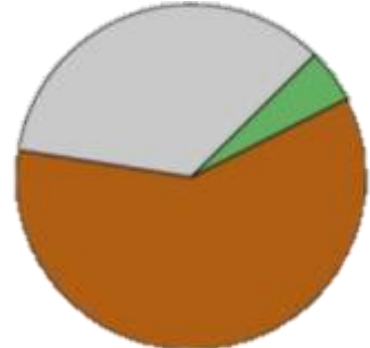
Three Character Elements



RURAL

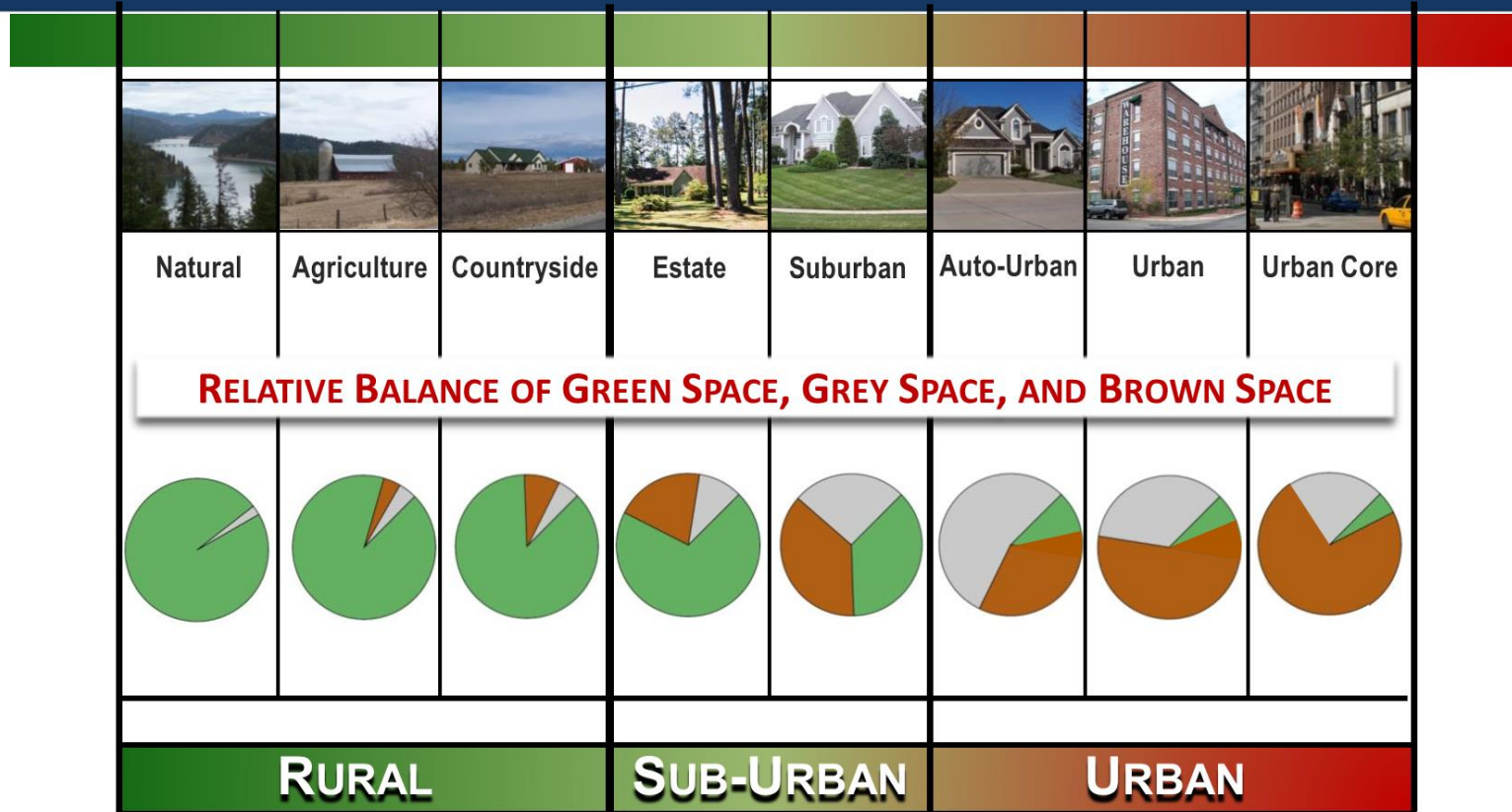


SUB-URBAN



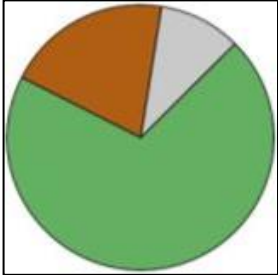
URBAN

Community Character Spectrum

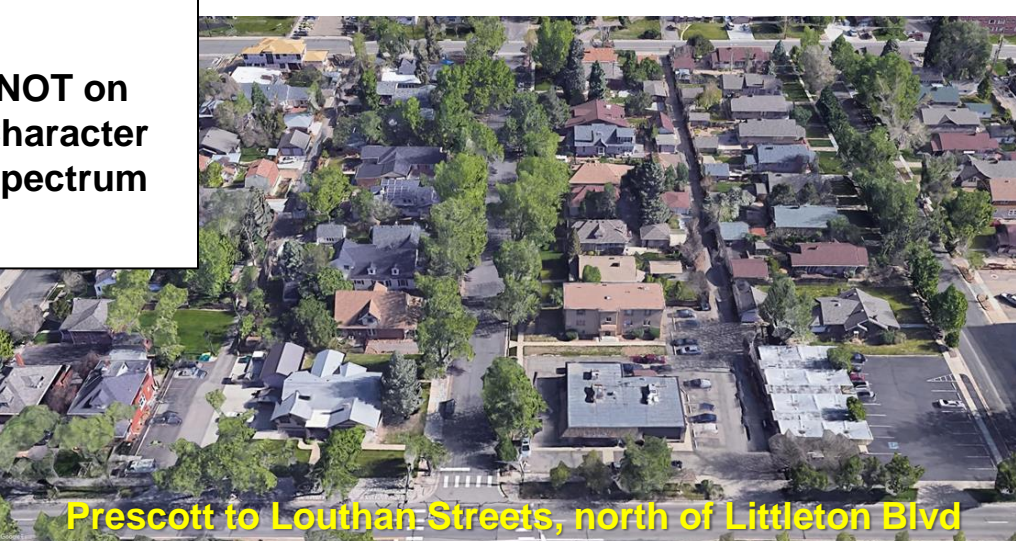


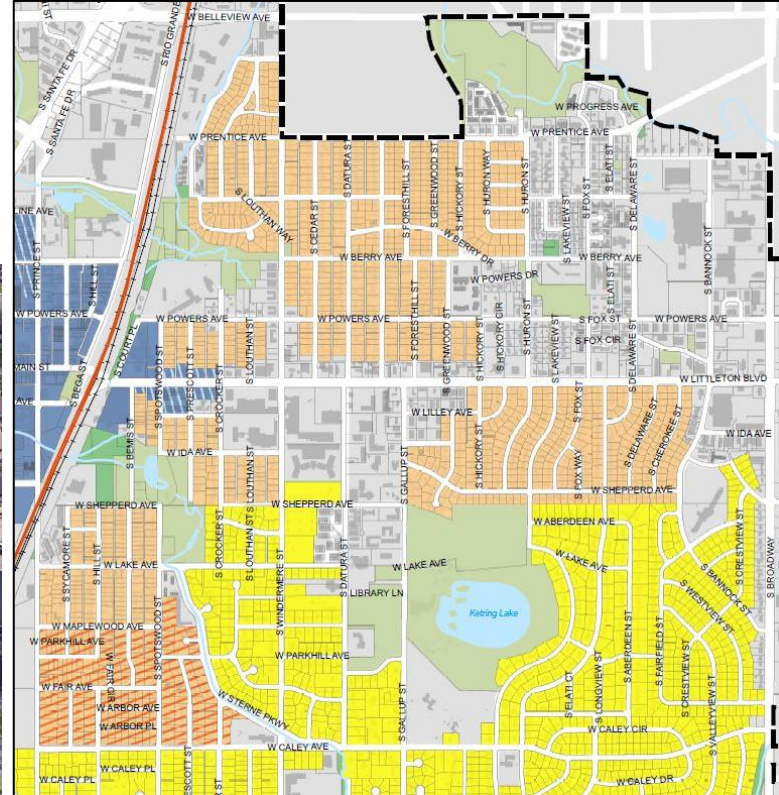
Estate Residential

- Single-family detached homes on largest lot sizes in city
- Landscape, openness predominate visually over buildings
- Majority of lot in open/green space



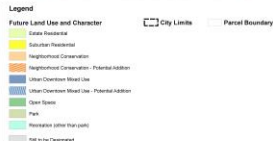
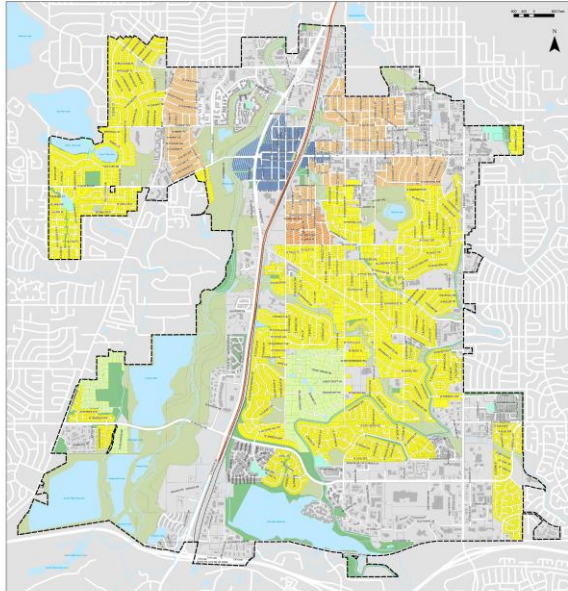
Copyright © 2011 Pearson Education, Inc. All rights reserved. Printed in the United States of America. This publication is protected by copyright. Any unauthorized reproduction or distribution, in any form or by any means, without written permission from Pearson Education, Inc., is prohibited. All rights reserved.

- NOT on
Character
Spectrum**
- 
- Prescott to Louthan Streets, north of Littleton Blvd**



Areas for Discussion

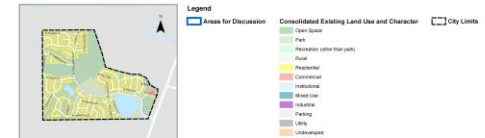
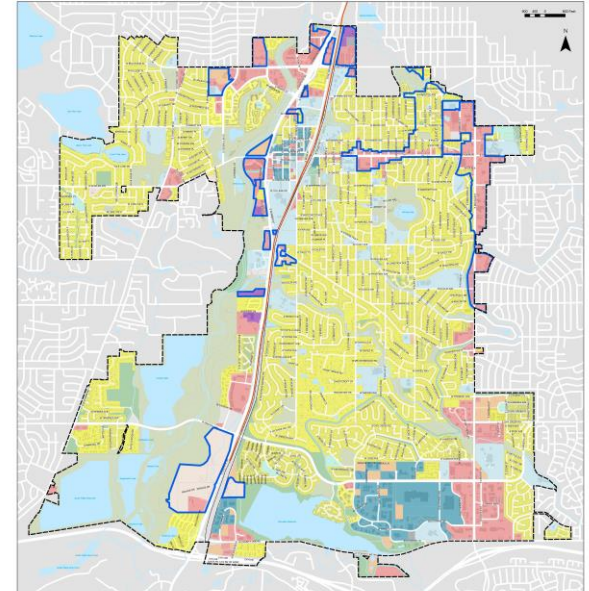
WORKING DRAFT Future Land Use and Character in Littleton, CO
(April 2019)



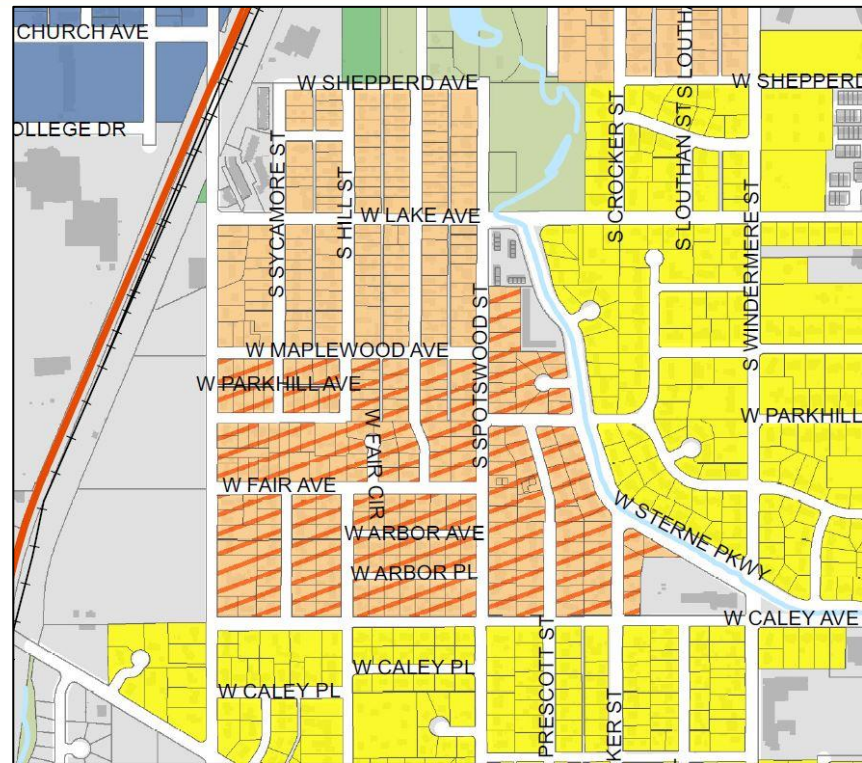
Along with feedback on preliminary mapped areas:

- If ~12,000 more residents?
- Key roadway corridors:
 - Santa Fe
 - Broadway
 - Littleton Blvd
 - Belleview
- South Platte River corridor
- Redevelopment potential
- Economic development and tax base outlook
- Light rail station areas – plus Broadway “BRT”?

WORKING DRAFT Areas for Discussion - Future Land Use Outlook
(April 2019)



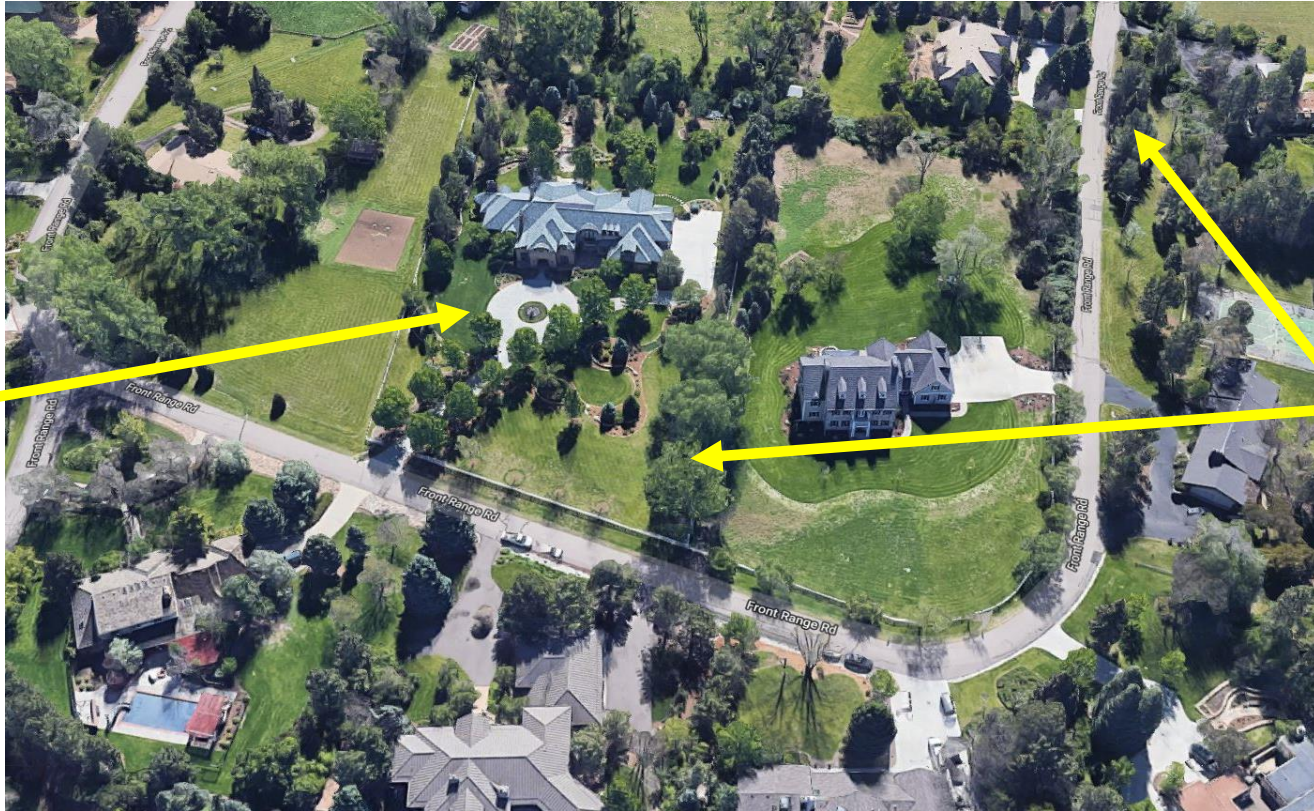
Urban Downtown Mixed Use



Policy Considerations

Estate Residential

Minimum
lot size



Buffers and
screening
along
property
lines and
street
frontages

Policy Considerations

Estate and Suburban Residential

Minimum
front yard
depths
and side
separation
between
homes

Sufficient
landscaping
and tree
planting /
preservation



Maximum
lot coverage
by buildings
and paving

Policy Considerations

Suburban Residential



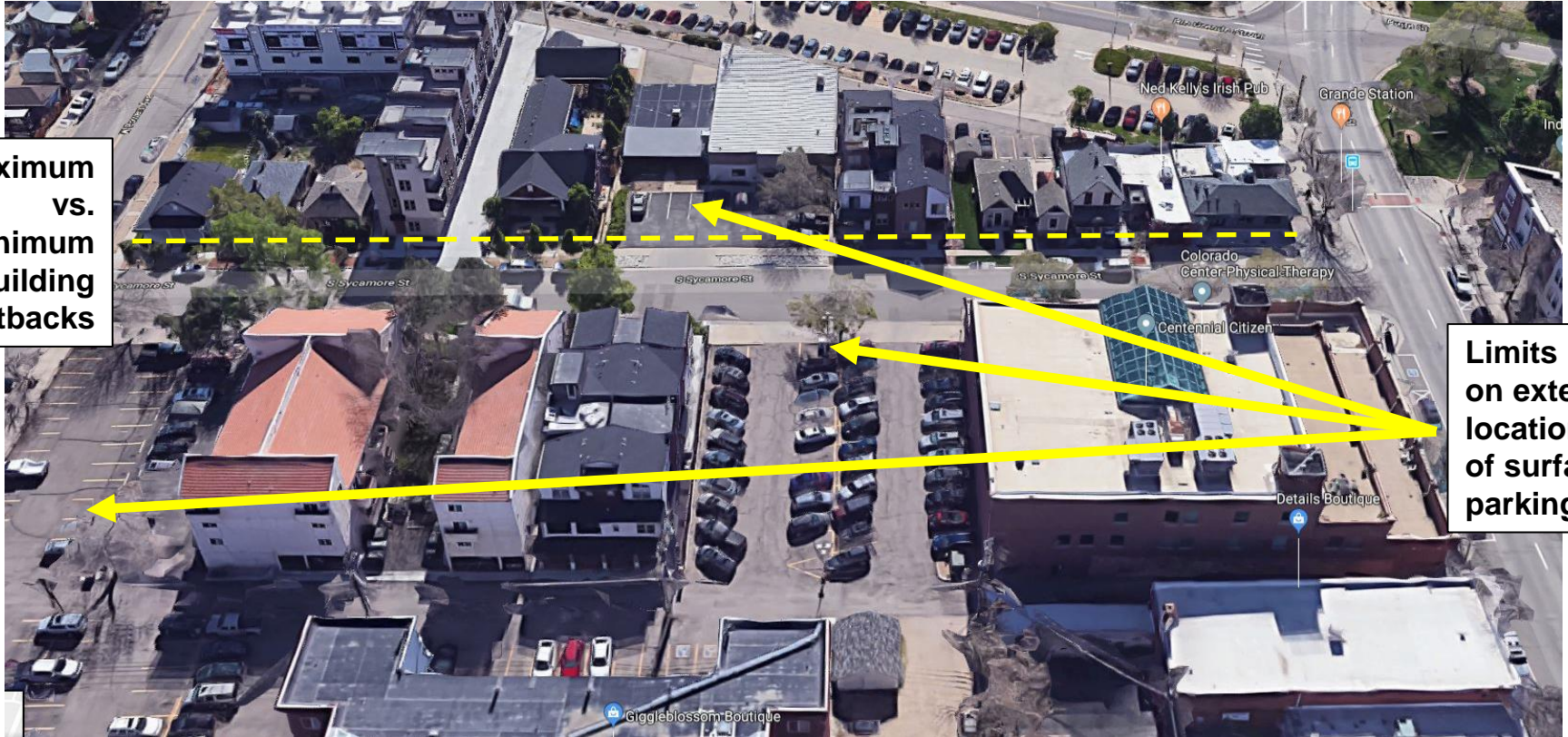
Residential design standards to address auto-focused house design?

Policy Considerations

Urban Downtown Mixed Use

**Maximum
vs.
minimum
building
setbacks**

**Limits
on extent,
location
of surface
parking**



Next Steps



An aerial photograph of a city street, likely in Denver, Colorado, showing a wide road with multiple lanes, trees lining the sidewalks, and buildings in the background. In the distance, a range of mountains is visible under a cloudy sky. A teal rectangular box is overlaid on the image, containing the word "QUESTIONS?".

QUESTIONS?

Thank you!