



# Envision LITTLETON

*Our Community. Our Future.*

---

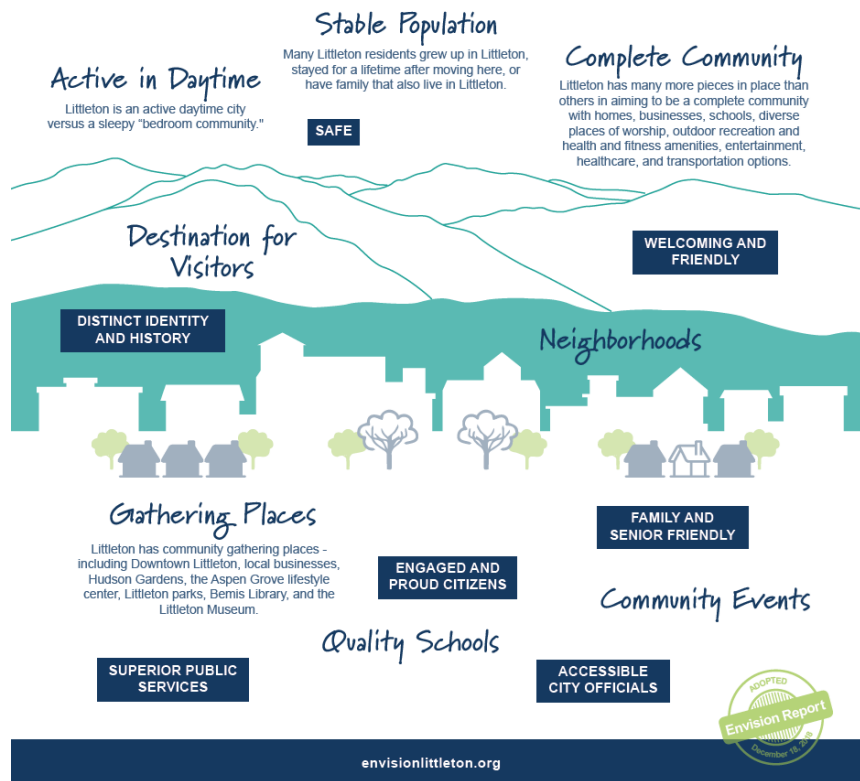
An innovative community engagement  
effort to define a vision for our future

# Objectives Tonight

---

1. Kick-Off
2. Review Unifying Vision & Guiding Principles
3. Shared Values Exercise
4. Review Phases & Project Timeline
5. Joint Leadership Expectations/Protocols

# Unifying Vision & Shared Values



- Maintain integrity
- Protect cherished natural setting
- Ensure reinvestment meets local expectations
- Safer & more accessible for everyone
- Achieve a higher standard
- Secure the long-term financial sustainability

# Great Input from Our Community with Each Step



**3,000 conversations**

**870 Survey Responses**

**130+ Events**

**2,500 Reviewed the Draft**

**Questions:**

**Kathleen Osher**

**[kosher@littletongov.org](mailto:kosher@littletongov.org)**

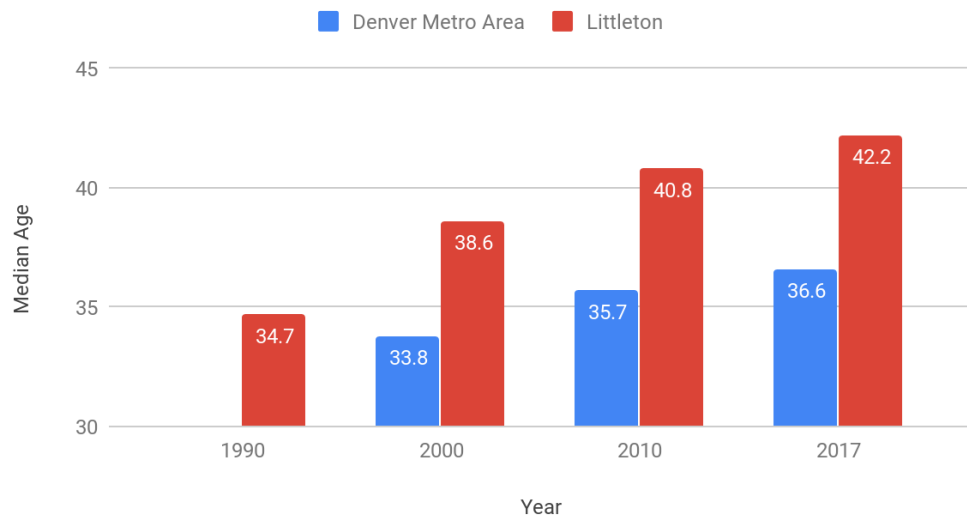
**Dedicated Website:**

**[EnvisionLittleton.org](http://EnvisionLittleton.org)**



## What is the median age in Littleton?

Median Age



42.2

# Vision 2040

## Shared Values

### BEING INCLUSIVE

- ▶ Age, race, income, and faith diversity

## Guiding Principles: Connected



It will be an inclusive and neighborly community that provides opportunities for youth, seniors, and residents in need to thrive

**What percent of homes sold in Littleton  
in 2016 could the average Denver  
metro worker (earning \$60,215) afford?**

**15%**

**Of those, 96% are  
attached homes**

---



# Vision 2040

## Shared Values

### BEING INCLUSIVE

- ▶ Age, race, income, and faith diversity
- ▶ Housing options

## Guiding Principles: Connected

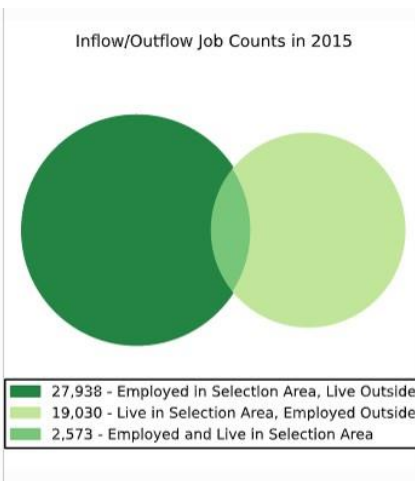
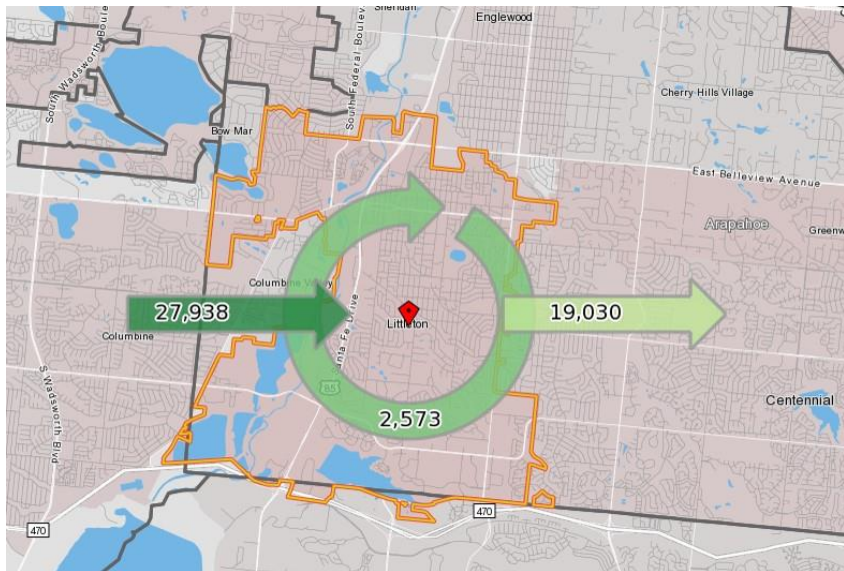


**It will be an inclusive and neighborly community that provides opportunities for youth, seniors, and residents in need to thrive**



# Guiding Principle: Being Connected

## What percentage of employed Littleton Residents work elsewhere?



**88%**

# Vision 2040

---

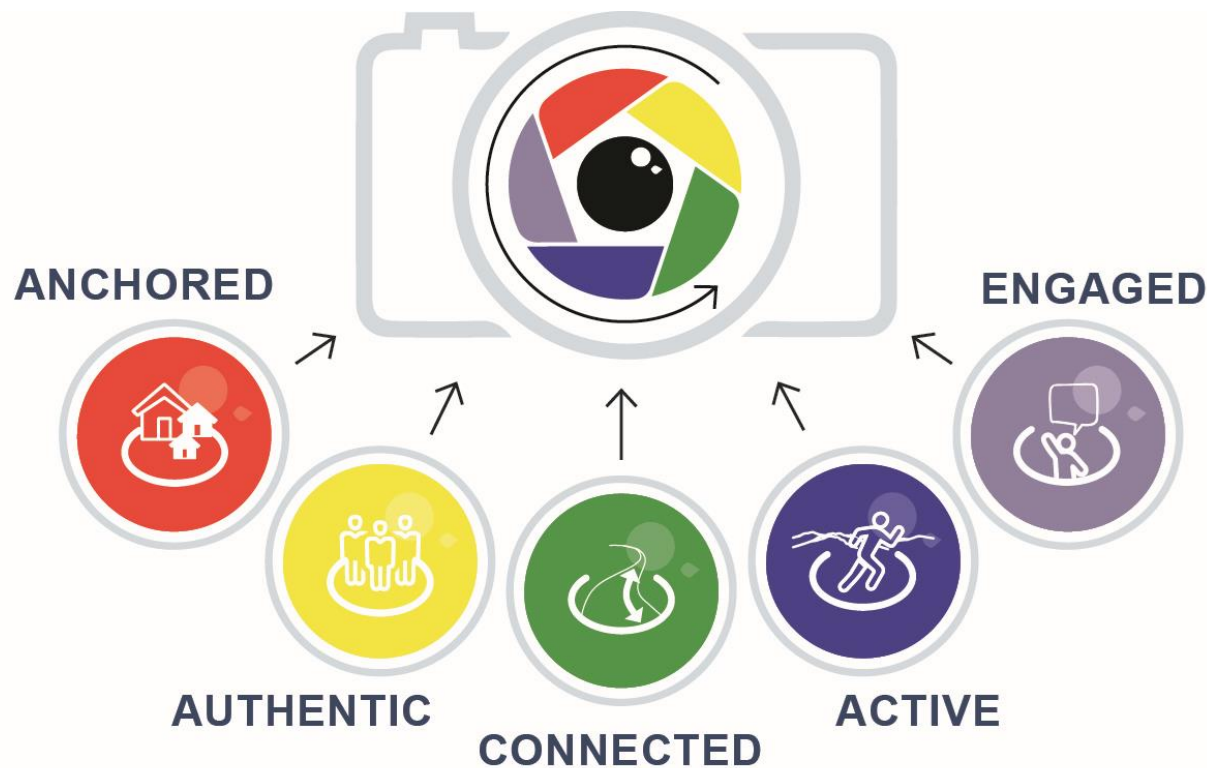
- ▶ Made itself even safer and more accessible for all the ways that people navigate through and within Littleton.

## Guiding Principles: Connected



Littleton will be an increasingly **CONNECTED** and accessible place. From a physical and mobility standpoint, it will continue to have regional ties via highways and arterials, transit services, long-distance trails, and the Mary Carter Greenway.

# Gift From Our Community - A Process for Decisions



# How will this process work?

## INPUTS



## OUTPUTS



# Phases for Envision Littleton in 2019



# With Each Phase: Tools to Keep Everyone Up-to-Speed



**Dedicated Website & social media updates**



**Email Updates to Subscribers and Advisory Groups including CCC as well as partner email newsletters**



**100 events planned, 4-part speaker series and each phase will have a new communication toolkit**



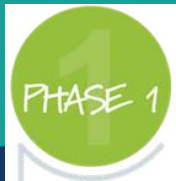
**Adoption scheduled for October 15, 2019**



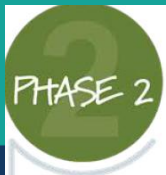


# When will decisions be made?

*When will we make decisions?*



**Review  
shared  
values,  
unifying  
vision with  
existing data  
for the City of  
Littleton**



**Analyze what  
we learned  
and Joint  
Leadership  
defines next  
steps**



**Develop future  
scenarios  
based on the  
needs of you  
and the city**



**You help us  
decide what  
is possible  
and together  
we prioritize  
scenarios**



**City Council  
and Planning  
Commission  
review and  
adopt the final  
plan**

November 2018 - July 2019

August 2019

October 2019



# The Role of Envision Littleton Joint Leadership

---

- Meet seven times and with adoption scheduled for October 15.
  - Make decisions with each phase and move to the next phase.
  - Bring your experience as elected and appointed officials.
-

# Thank You!

---

- Next Meeting March 12
  - Goal on 3/12: Wrap-up phase 1 and 2; begin to imagine the future City of Littleton with scenarios
  - Questions: [kosher@littletongov.org](mailto:kosher@littletongov.org)
-