

City of Littleton Infrastructure Advisory Board

October 23, 2018



Littleton

Council Questions

- Does City Council want to develop a board or commission to advise Council and the community on infrastructure and utility issues?
- Questions to consider?
 - Transportation versus utilities
 - Goals of the effort
 - Ad hoc versus permanent
 - Staff time commitment
 - Sub-committees



Why?

- Infrastructure is the single largest investment by the city in addition to labor to provide services
- City surveys repeatedly show “infrastructure” and associated issues are a top priority
- The customer base for these services handles over 250,000 customers per day
- Littleton has a history of non-data based long and short term planning for infrastructure



Best in Class

Littleton's Path Forward

STRATEGIC PLAN



WORLD CLASS CONSTRUCTION



LEADING POLICIES



ASSET ASSESSMENT

BEST OF CLASS

TECHNIQUES

STRONG CONSULTANTS

CONTINUING EDUCATION

FLEXIBLE PROJECT DELIVERY

BEST IN CLASS CONTRACTORS

FIELD

MANAGEMENT/INSPECTION

NEIGHBORHOOD ENGAGEMENT

TRANSPORTATION MASTER

PLAN

DESIGN STANDARDS

RESILIENCY

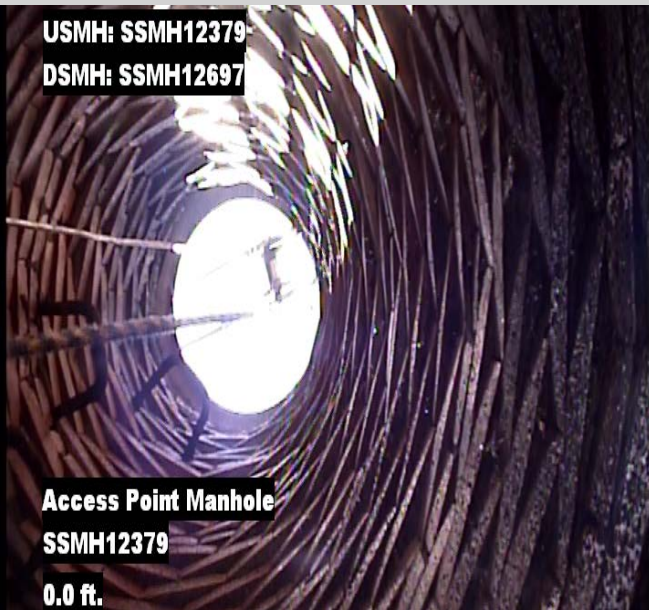
COMMUNICATIONS &

TECHNOLOGY

Timing



- 2018 – Data Collection & Systems Development
 - Asset Management Platform Development/Data Collection
 - 2018/19: Sewer, Storm, Facilities, Fleet
 - 2020/21: Streets, Traffic, Grounds
 - March-December 2019
 - Data analysis and risk assessments
 - Transportation Master Plan (Fall 2019)
 - Sewer Master Plan (Fall 2019)
 - Stormwater Master Plan (Fall 2019)
 - Facilities Master Plan (Summer 2019)
 - Fleet Master Plan (Summer 2019)
- 2020
- Sewer & Stormwater Rate Studies
 - Long term capital planning/funding



Example Charters

- Attached is a summary of example charters for transportation advisory boards in the region, in addition many communities also have utility commissions or boards; there are few examples of these being combined.



Example Board Framework

- 9 Members (plus alternate)
- Council Liaison
- 3 members each focused on:
 - Mobility (Roads, Traffic, Multimodal, Regional)
 - Utilities (Sewer, Stormwater, Regional)
 - Structures (Facilities, Fleet, Grounds)
 - Finance – All
- Ad hoc committees to support targeted efforts as needed
 - Bicycle, pedestrian, multi-modal sub-plans
 - Disability/ADA Transition Plans
 - Major public facility design (i.e. joint with Library)
 - Finance (i.e. Bond issue, TABOR, fees, tax initiatives)
- Membership
 - 2 Members – non-residents but business ties to Littleton that impact these issues – Provide regional perspective



Challenges

- Timeline
 - Detailed work will not be available for members to work with until Spring 2019
- Staff support
- Charter & expectations
- Regulatory versus advisory
 - Rates & Fees



Council Questions

- Does City Council want to develop a board or commission to advise Council and the community on infrastructure and utility issues?
- Questions to consider?
 - Transportation versus utilities
 - Goals of the effort
 - Ad hoc versus permanent
 - Staff time commitment
 - Sub-committees

