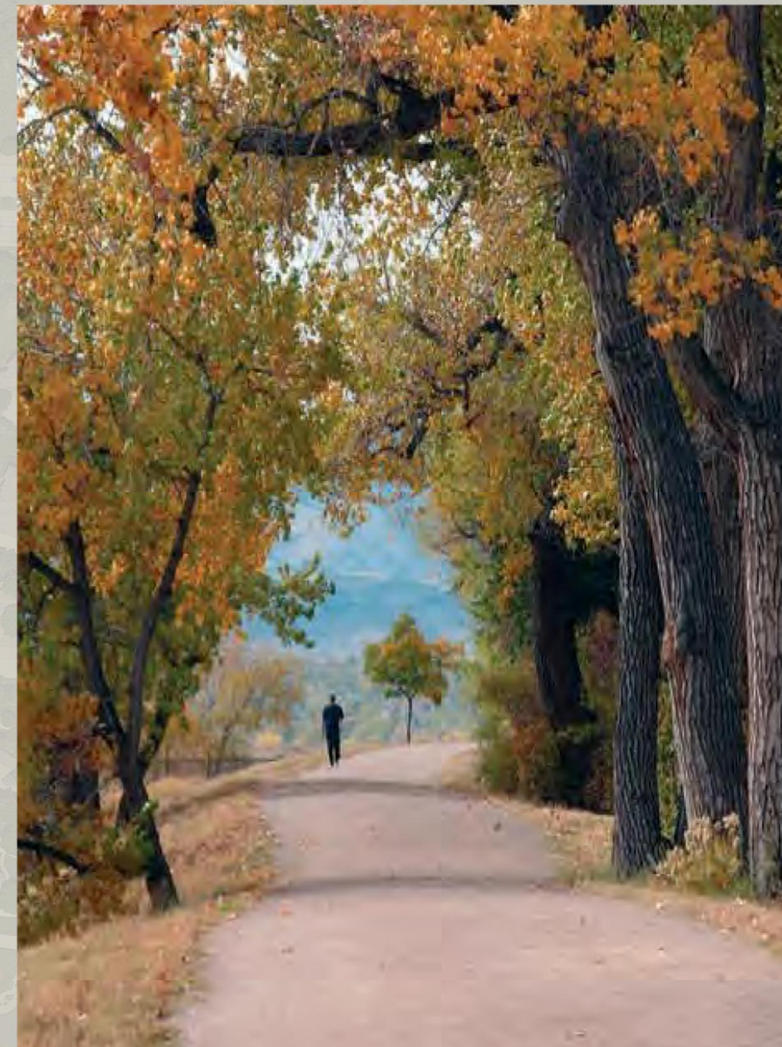
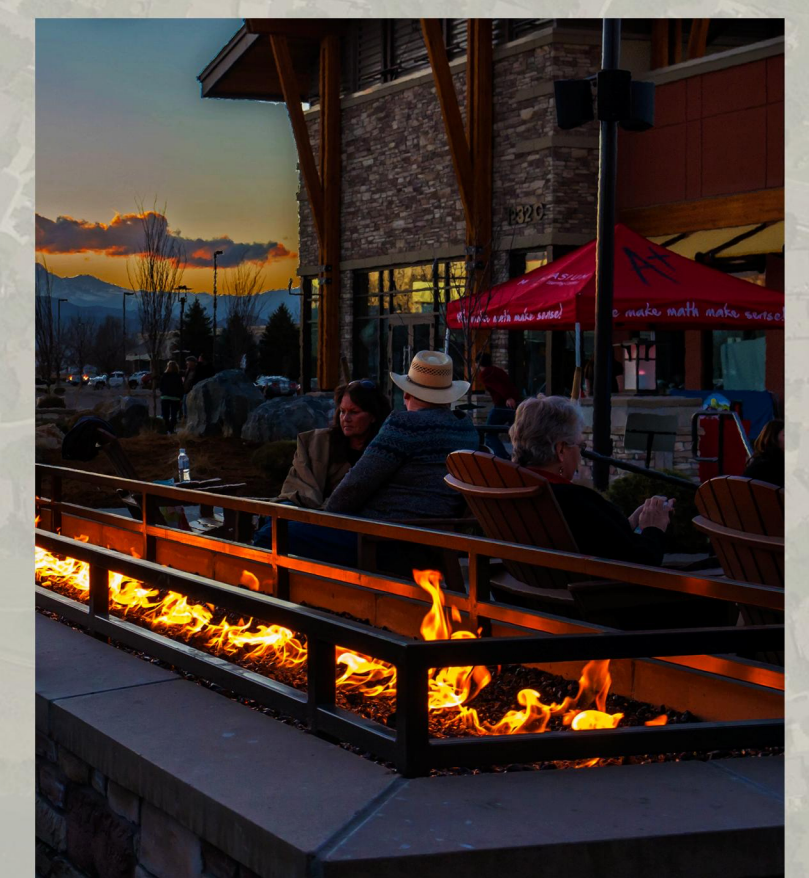


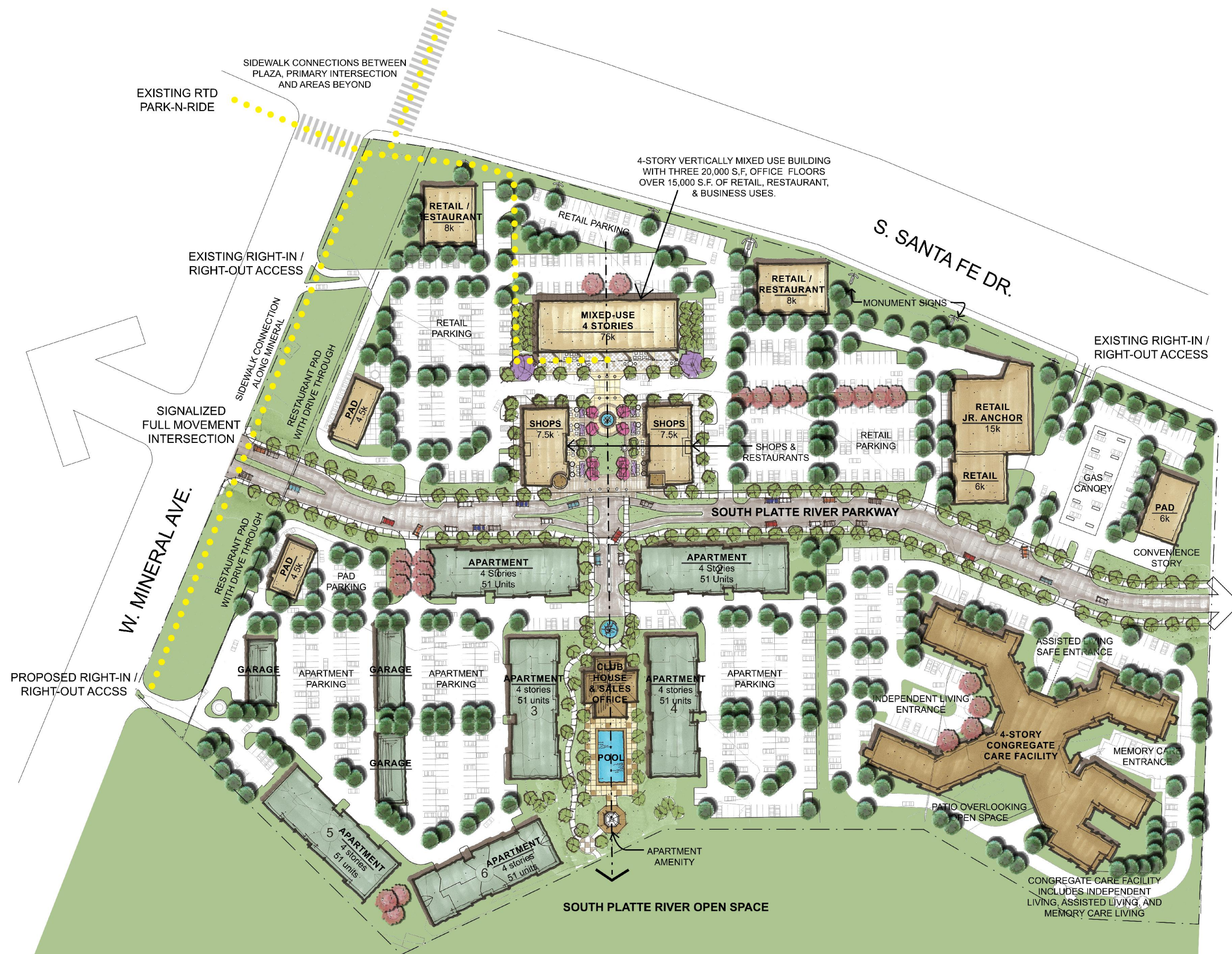
Santa Fe Park



Key Site Analysis concepts

- Create a mixed use community that capitalizes on the proximity of the light-rail station.
- Create a public gathering space for retail, residential and public uses.
- Provide a design that allows for pedestrian connections with light-rail, Aspen Grove, the Mary Carter trail and adjacent neighborhoods.
- Create an environment through design, landscaping and architecture that is uniquely Littleton.



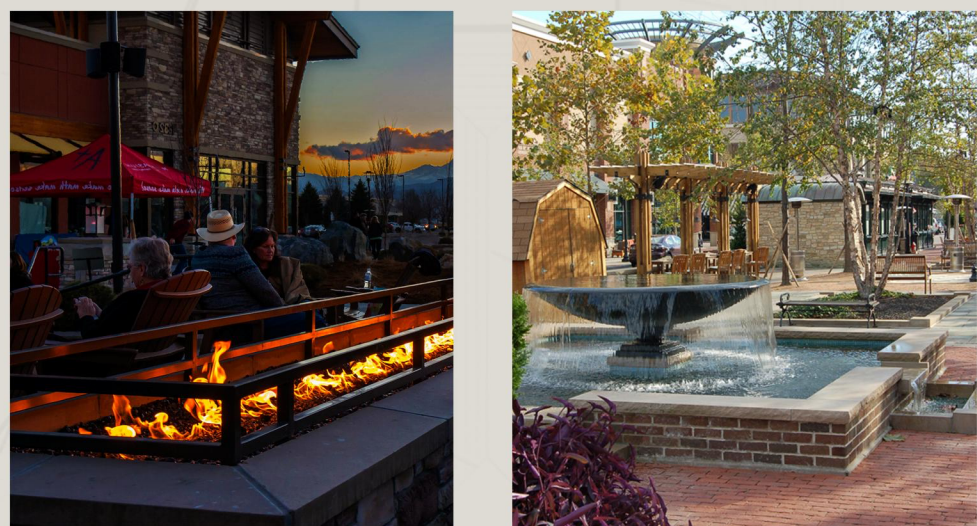


Santa Fe Park



Key Design Concepts

- 4-story multi-use building creates backdrop for public gathering space and established terminus of primary axis.
- Primary axis connects multi-use building through public gathering space, residential entry, and Platte River Open Space beyond.
- Develop a local gathering space that is successful on both a smaller, intimate scale, and for moderately sized, local community events.
- Develop a defined outdoor seating / al fresco dining area separate from vehicular presence.
- Utilize water and fire as public gathering design elements.



Parallel parking

Stage area

Fireplace

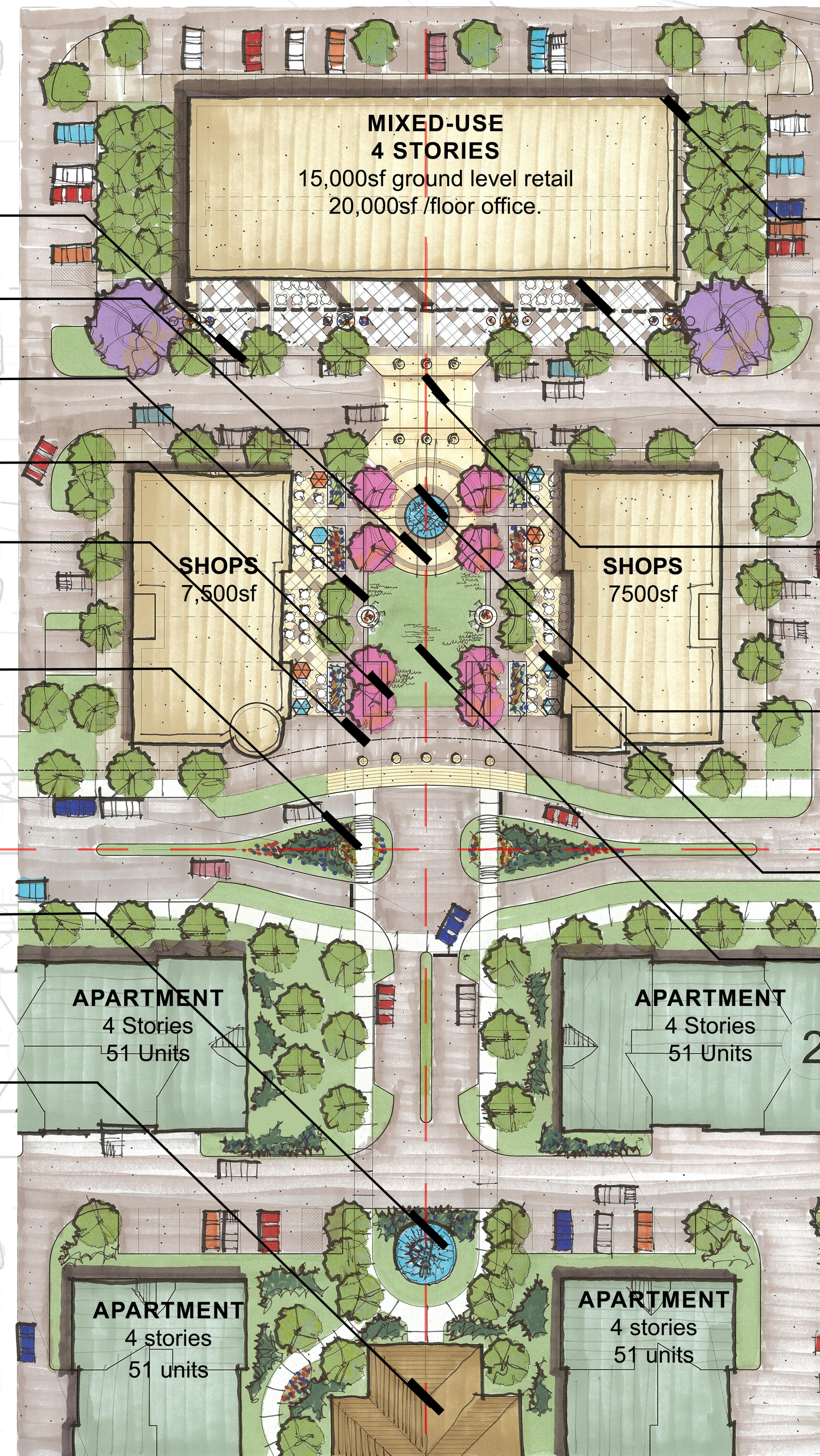
Ornamental trees in plaza

Decorative bollards

Divided islands slows traffic and provides a sense of arrival at the center gathering place of the site

Apartment welcoming element

Clubhouse frames axis



Large mixed use building forms backdrop to pedestrian plaza area.

Colonnade walkway.

Raised pedestrian crosswalk.

Ceremonial fountain or kiosk amenity.

12'-16' wide patio zone.

52'x 60' lawn area with perimeter steps for casual seating /performance areas.

Site Plan