

5100 S. HICKORY ST.  
LITTLETON, CO 80110  
ARAPAHOE COUNTY 25.9 ACRES  
CASE # SP17-0031

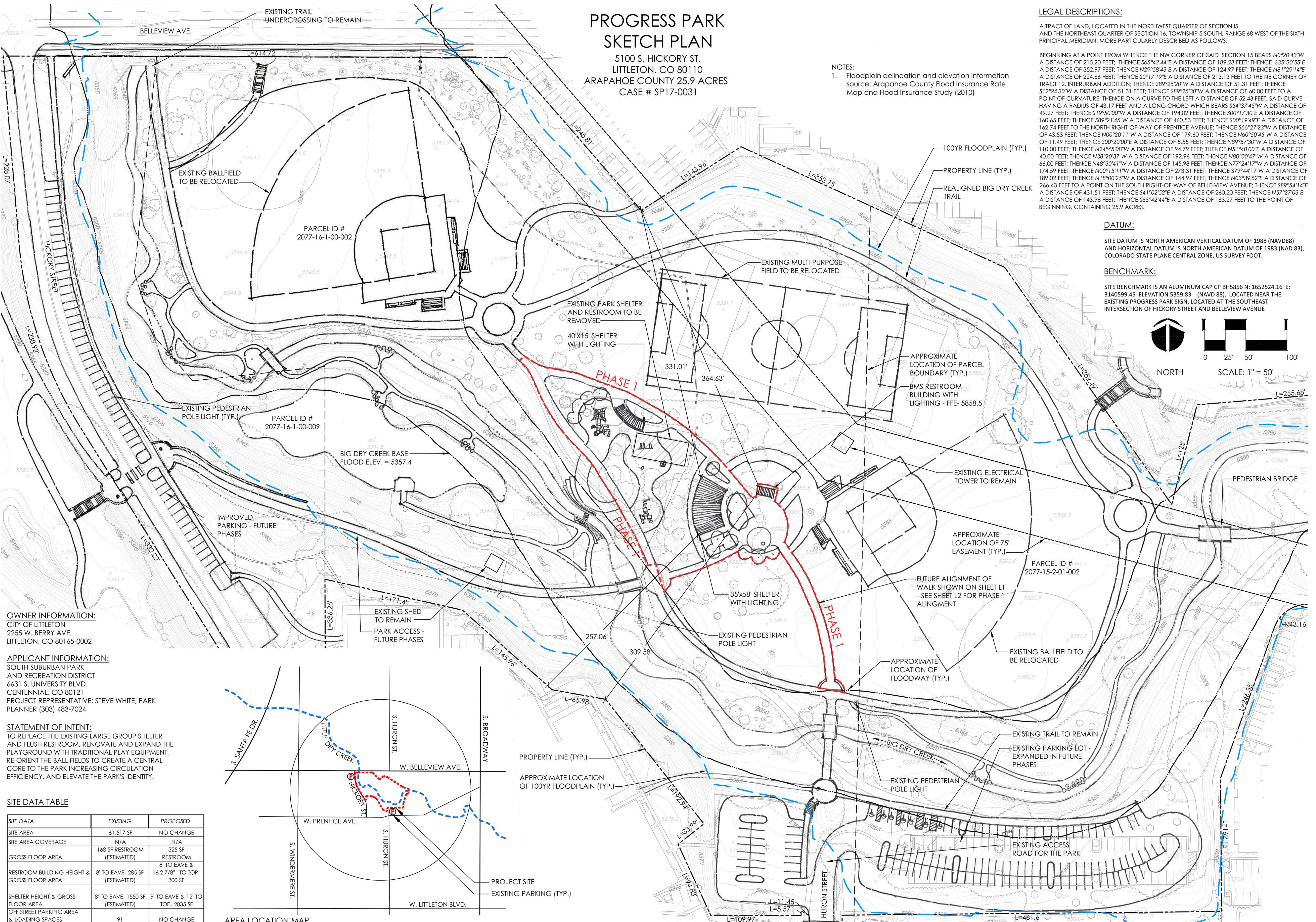
**LEGAL DESCRIPTIONS:**

A TRACT OF LAND, LOCATED IN THE NORTHWEST QUARTER OF SECTION 15 AND THE NORTHEAST QUARTER OF SECTION 16, TOWNSHIP 5 SOUTH, RANGE 68 WEST OF THE SIXTH PRINCIPAL MERIDIAN, MORE PARTICULARLY DESCRIBED AS FOLLOWS:

BEGINNING AT A POINT FROM WHENCE THE NW CORNER OF SAID SECTION 15 BEARS N0°20'43"W A DISTANCE OF 215.20 FEET; THENCE S65°42'44"E A DISTANCE OF 189.23 FEET; THENCE S35°30'53"E A DISTANCE OF 352.97 FEET; THENCE N29°58'53"E A DISTANCE OF 124.97 FEET; THENCE N81°29'14"E A DISTANCE OF 224.66 FEET; THENCE S00°17'19"E A DISTANCE OF 213.13 FEET TO THE NE CORNER OF TRACT 12, INTERURBAN ADDITION; THENCE S89°25'20"W A DISTANCE OF 51.31 FEET; THENCE S12°24'30"W A DISTANCE OF 51.31 FEET; THENCE S89°25'20"W A DISTANCE OF 40.00 FEET TO A POINT OF CURVATURE; THENCE ON A CURVE TO THE LEFT A DISTANCE OF 52.43 FEET, SAID CURVE HAVING A RADIUS OF 43.17 FEET AND A LONG CHORD WHICH BEARS S54°39'45"W A DISTANCE OF 49.27 FEET; THENCE S19°50'00"W A DISTANCE OF 194.02 FEET; THENCE S00°17'30"E A DISTANCE OF 160.65 FEET; THENCE S89°21'45"W A DISTANCE OF 460.53 FEET; THENCE S00°19'49"E A DISTANCE OF 162.74 FEET TO THE NORTH RIGHT-OF-WAY OF PRENTICE AVENUE; THENCE S64°6'27"3"W A DISTANCE OF 43.53 FEET; THENCE N00°20'11"W A DISTANCE OF 179.60 FEET; THENCE N60°50'45"W A DISTANCE OF 11.49 FEET; THENCE S00°20'00"E A DISTANCE OF 0.55 FEET; THENCE N89°57'30"W A DISTANCE OF 110.00 FEET; THENCE N24°45'08"W A DISTANCE OF 94.79 FEET; THENCE N51°40'00"E A DISTANCE OF 40.00 FEET; THENCE N38°20'37"W A DISTANCE OF 92.94 FEET; THENCE N80°00'47"W A DISTANCE OF 66.02 FEET; THENCE N49°04'14"W A DISTANCE OF 145.98 FEET; THENCE N77°24'17"W A DISTANCE OF 174.59 FEET; THENCE N00°51'11"W A DISTANCE OF 273.31 FEET; THENCE S79°44'17"W A DISTANCE OF 189.00 FEET; THENCE N18°00'25"W A DISTANCE OF 144.97 FEET; THENCE N03°39'52"E A DISTANCE OF 266.43 FEET TO A POINT ON THE SOUTH RIGHT-OF-WAY OF BELLE-VUE AVENUE; THENCE S89°54'14"E A DISTANCE OF 431.51 FEET; THENCE S41°02'52"E A DISTANCE OF 260.20 FEET; THENCE N55°27'03"E A DISTANCE OF 143.98 FEET; THENCE S65°42'44"E A DISTANCE OF 163.27 FEET TO THE POINT OF BEGINNING, CONTAINING 25.9 ACRES.

**BENCHMARK:**

SITE BENCHMARK IS AN ALUMINUM CAP CP BH5856 N: 1652524.16 E: 3140599.45 ELEVATION 5359.83 (NAVD 88). LOCATED NEAR THE EXISTING PROGRESS PARK SIGN, LOCATED AT THE SOUTHEAST INTERSECTION OF HICKORY STREET AND BELLEVUE AVENUE



**STATEMENT OF INTENT:**  
TO REPLACE THE EXISTING LARGE GROUP SHELTER  
AND FLUSH RESTROOM, RENOVATE AND EXPAND THE  
PLAYGROUND WITH TRADITIONAL PLAY EQUIPMENT,  
RE-ORIENT THE BALL FIELDS TO CREATE A CENTRAL  
CORE TO THE PARK INCREASING CIRCULATION  
EFFICIENCY, AND ELEVATE THE PARK'S IDENTITY.

SITE DATA	EXISTING	PROPOSED
SITE AREA	61,517 SF	NO CHANGE
SITE AREA COVERAGE	N/A	N/A
GROSS FLOOR AREA	168 SF RESTROOM (ESTIMATED)	325 SF RESTROOM
RESTROOM BUILDING HEIGHT & GROSS FLOOR AREA	8' TO EAVE, 285 SF (ESTIMATED)	8' TO EAVE & 16'2"8" TO TOP, 300 SF
SHELTER HEIGHT & GROSS FLOOR AREA	8' TO EAVE, 1550 SF (ESTIMATED)	9' TO EAVE & 12' TO TOP, 2035 SF
OFF STREET PARKING AREA & LOADING SPACES	91	NO CHANGE

### AREA LOCATION MAP

PROJECT #: 1509 DRWN BY: JAG DATE: 11-15-17 CHKD BY: CMT

**PROGRESS PARK**  
**LITTLETON, COLORADO**

SHEET:  
L-1

OF 4

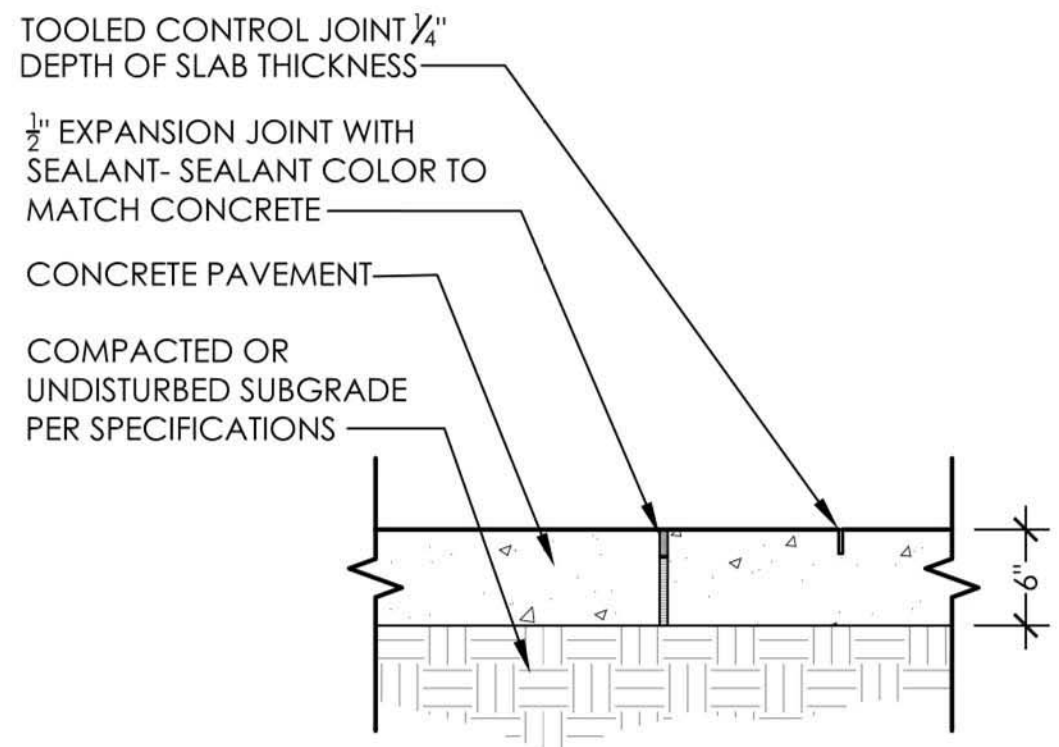




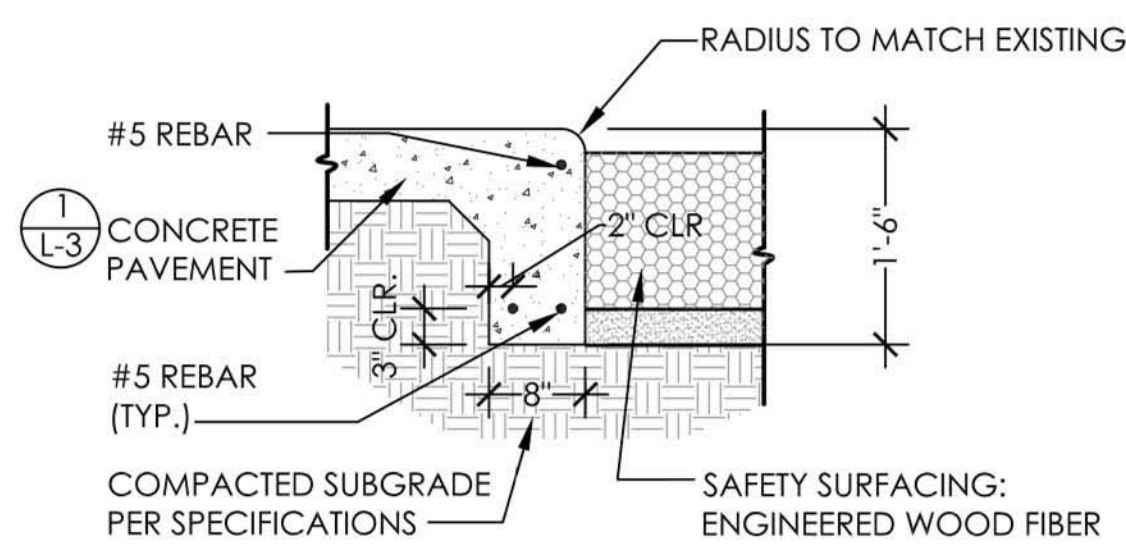
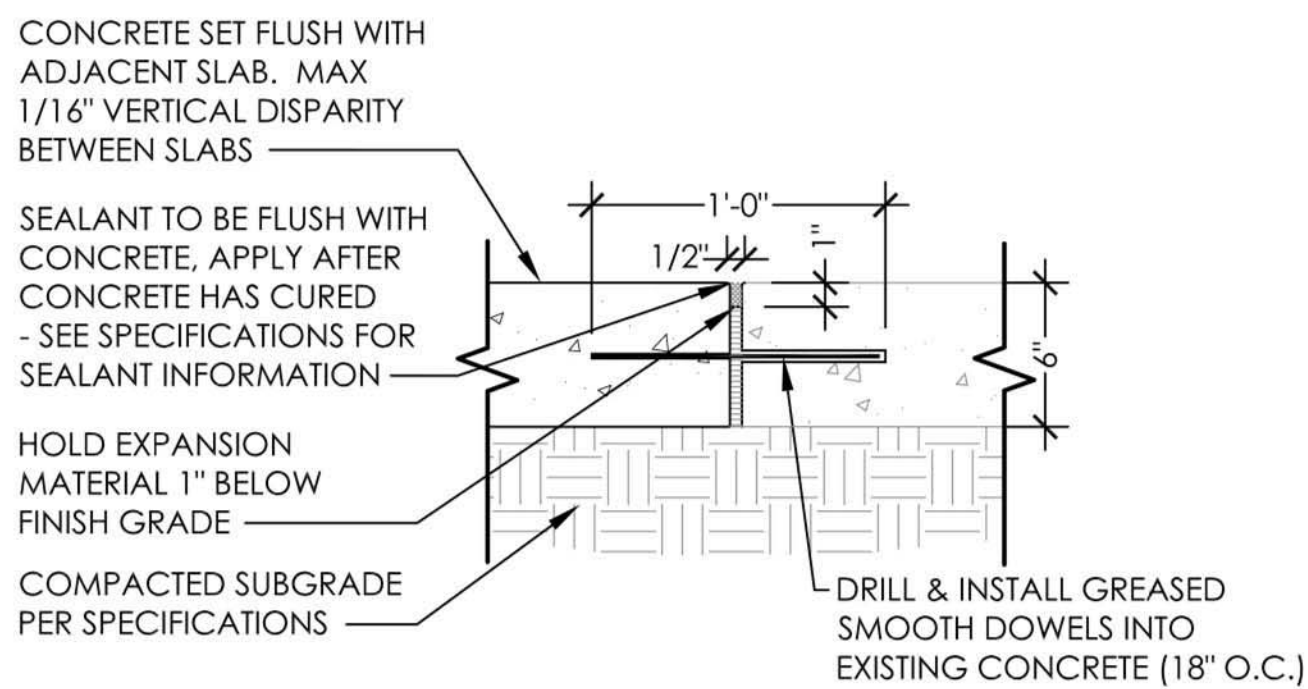


PROGRESS PARK  
SKETCH PLAN

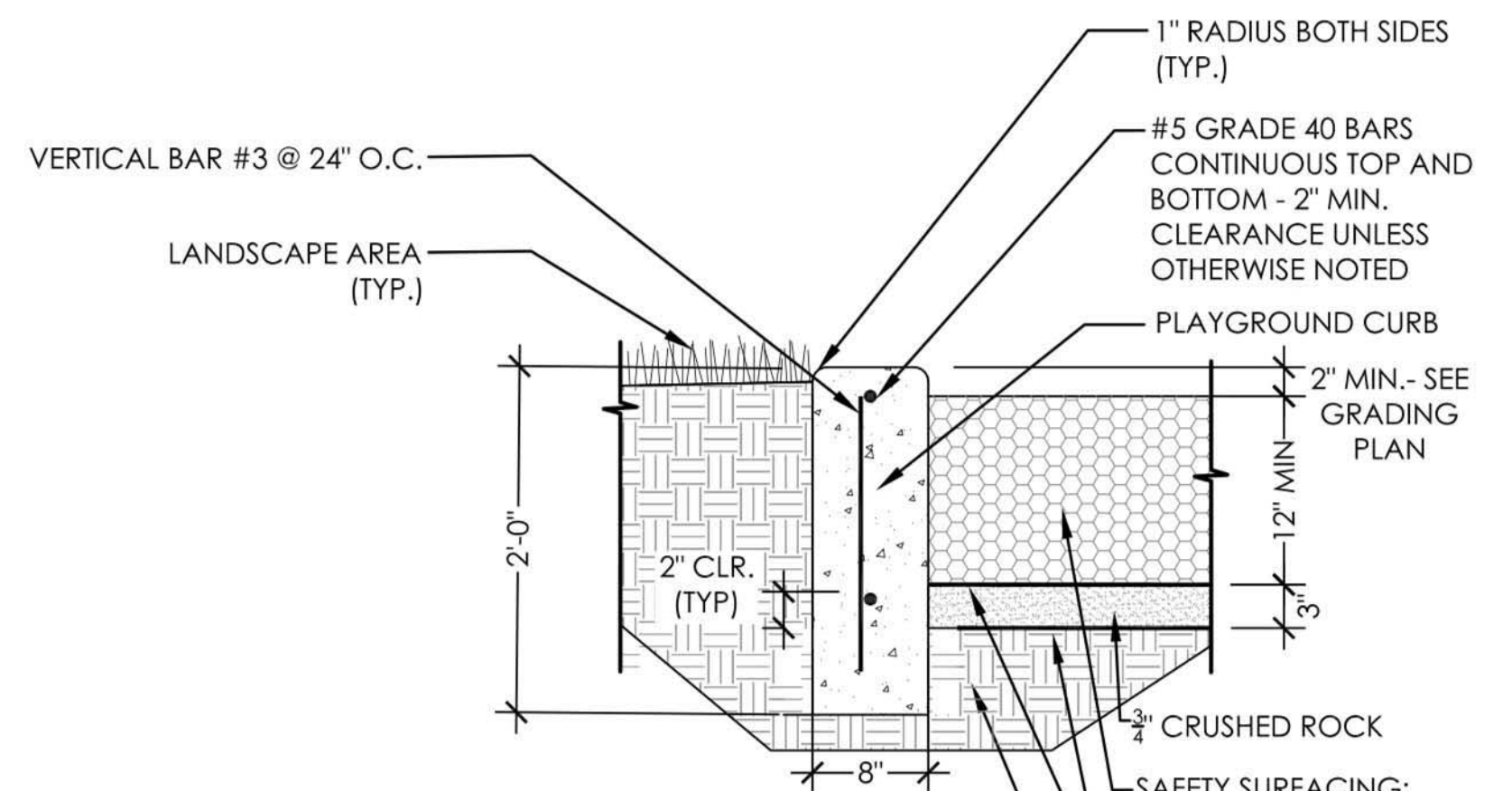
5100 S. HICKORY ST.  
LITTLETON, CO 80110  
ARAPAHOE COUNTY 20.21 ACRES  
CASE # SP17-0031



- NOTE:  
1. CONCRETE SHALL HAVE MEDIUM BROOM FINISH  
2. COLOR SHALL BE GRAY



- NOTES:  
1. SAWCUT FACE OF THICKENED EDGE AT EVERY TOOL JOINT  
- COORDINATE WITH OWNER'S REPRESENTATIVE.



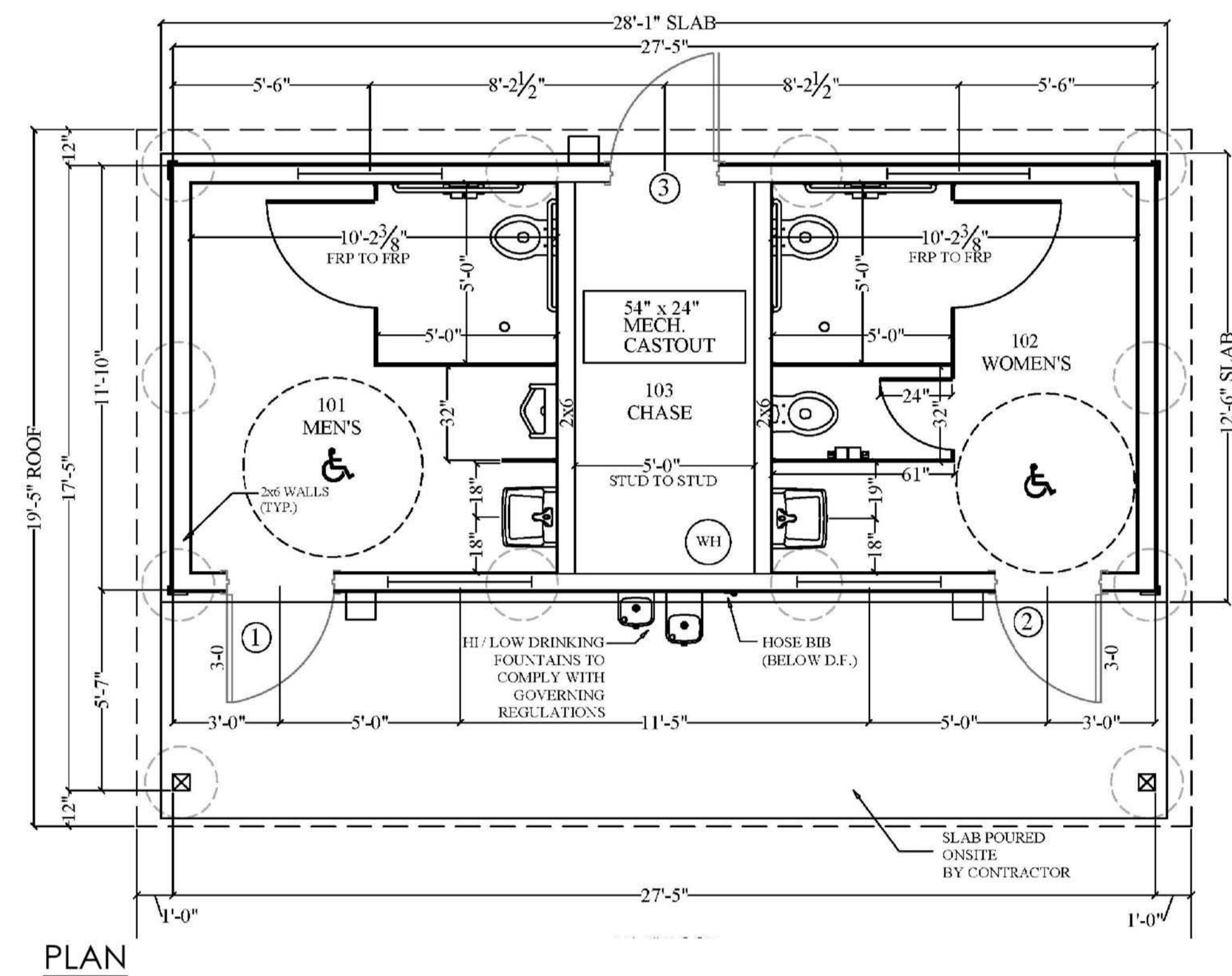
- NOTES:  
1. DOWEL THICKENED EDGE TO CONCRETE CURB WITH (2) 18" #4 REBAR DOWELS AT ALL LOCATIONS WHERE CONCRETE CURBS MEET THICKENED EDGES.  
2. INSTALL TOOL JOINTS ALONG CURB AT 6' O.C.  
3. SAW CUT FACE OF CURB AT EVERY TOOL JOINT  
- COORDINATE WITH OWNER'S REPRESENTATIVE.

1 CONCRETE PAVEMENT  
L-3 SECTION NTS

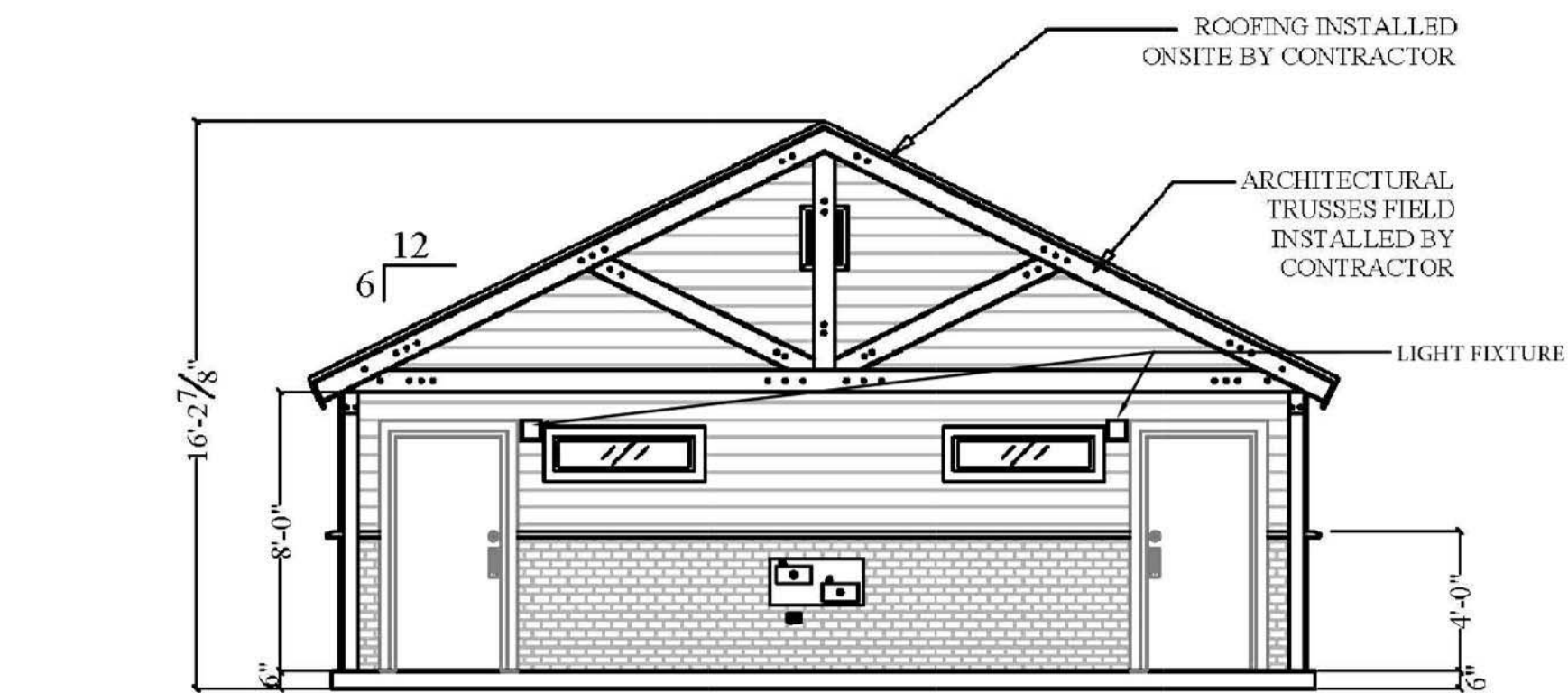
2 JOINT AT EXISTING CONCRETE  
L-3 SECTION NTS

3 CONCRETE THICKENED EDGE  
L-3 SECTION NTS

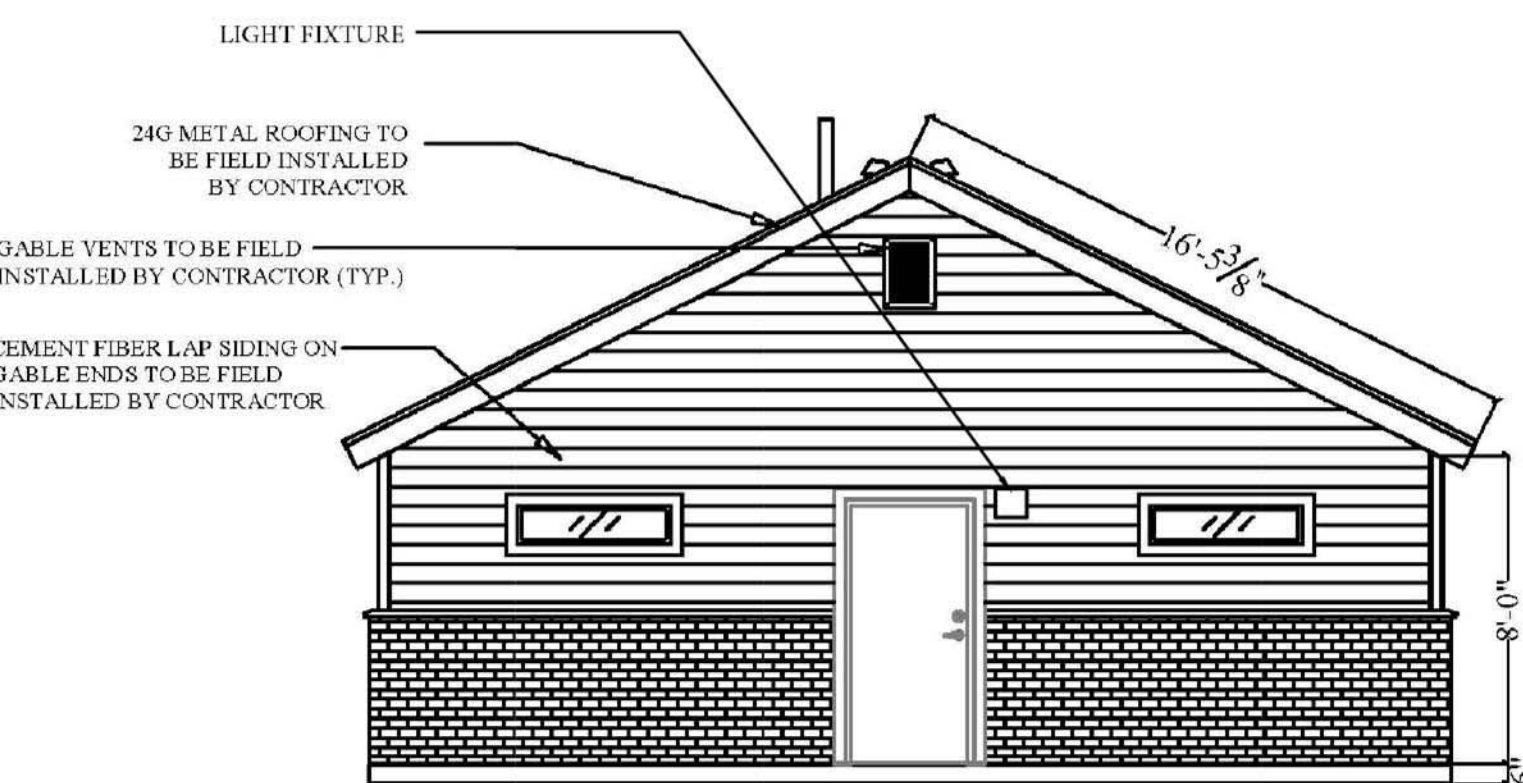
4 PLAYGROUND CURB AND SAFETY SURFACING  
L-3 SECTION NTS



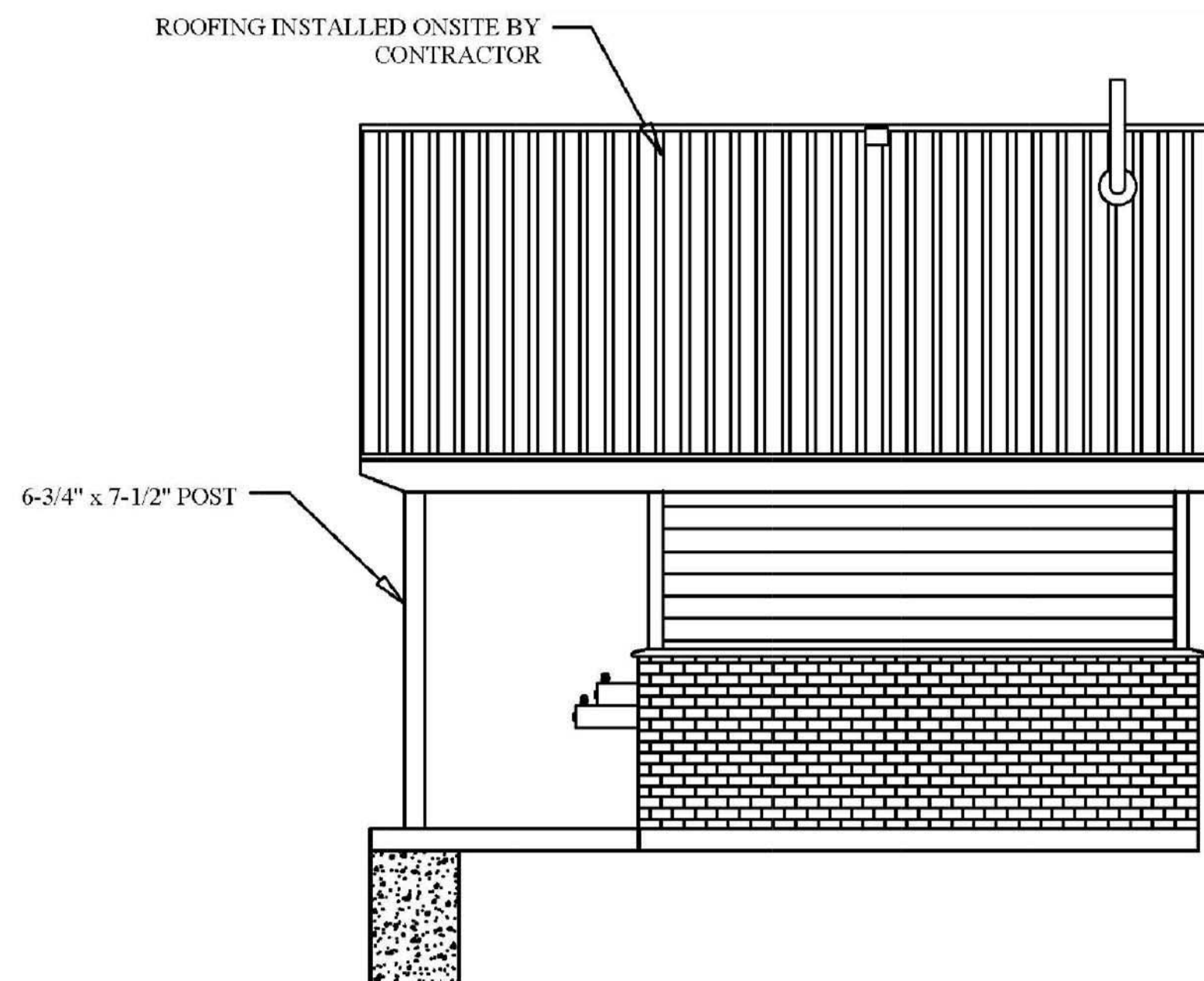
PLAN



FRONT ELEVATION



REAR ELEVATION



SIDE ELEVATION

RAB  
WPLED13



EXTERIOR LUMINAIRE

Driver Info		LED Info	
Type:	Constant Current	Watts:	13W
120V:	0.13A	Color Temp:	5000K
208V:	0.08A	Color Accuracy:	67 CRI
240V:	0.07A	L70 Lifespan:	100000
277V:	0.06A	Lumens:	1350
Input Watts:	15W	Efficiency:	101 LPW
Efficiency:	86%		

5 RESTROOM BUILDING  
L-3 PLAN & ELEVATIONS

NTS

DETAILS  
PROGRESS PARK  
LITTLETON, COLORADO

SHEET:  
L-3

3 OF 4

SUBMITTALS:

ARCHITERRA GROUP  
5981 south deframe street  
littleton, colorado 80127  
303.948.0766 fax 948.0977  
www.architerra.com

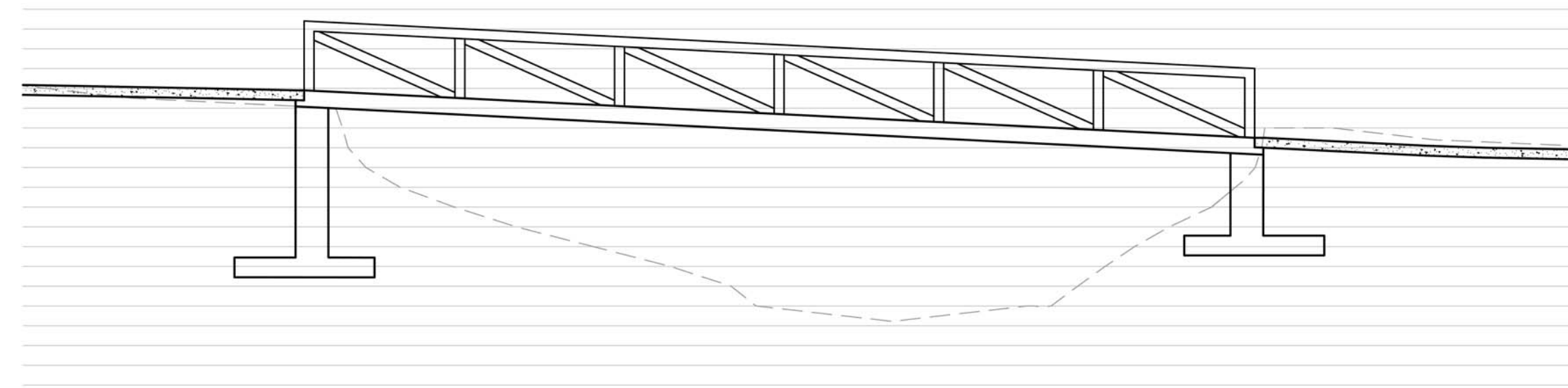


PROJECT #: 1582 DRWN BY: JAG DATE: 11-15-17 CHK BY: CMT

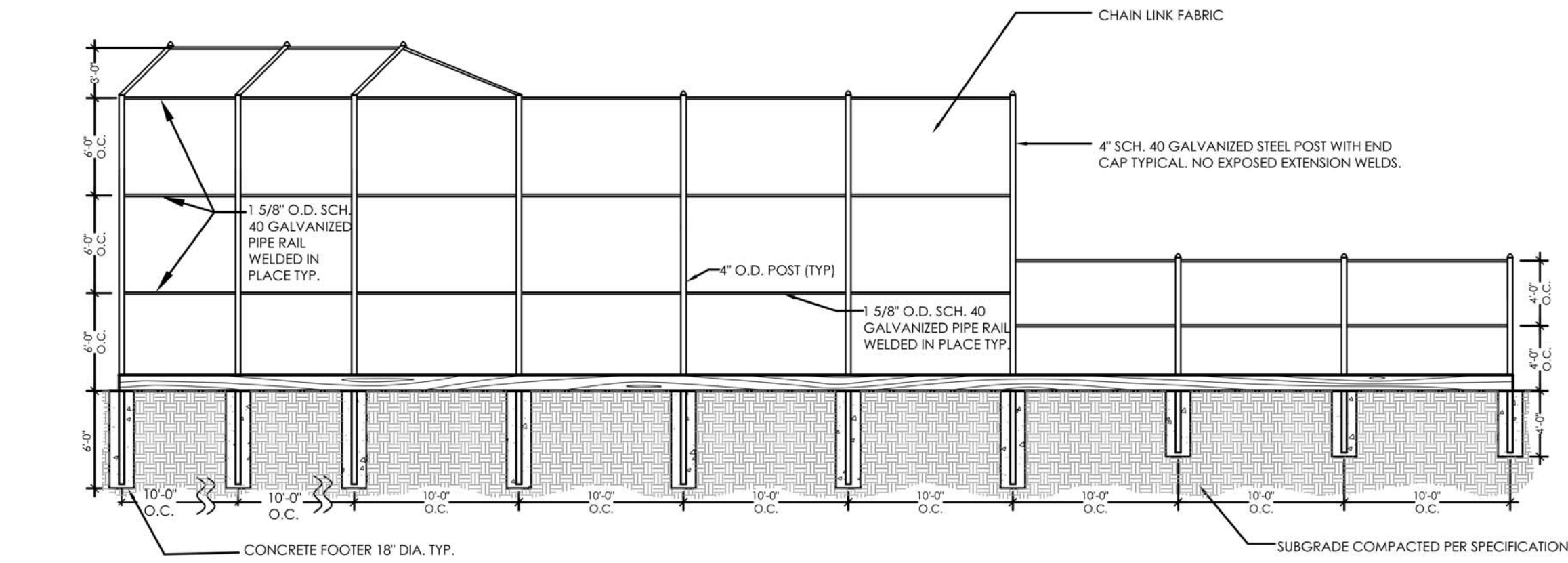


PROGRESS PARK  
SKETCH PLAN

5100 S. HICKORY ST.  
LITTLETON, CO 80110  
ARAPAHOE COUNTY 20.21 ACRES  
CASE # SP17-0031

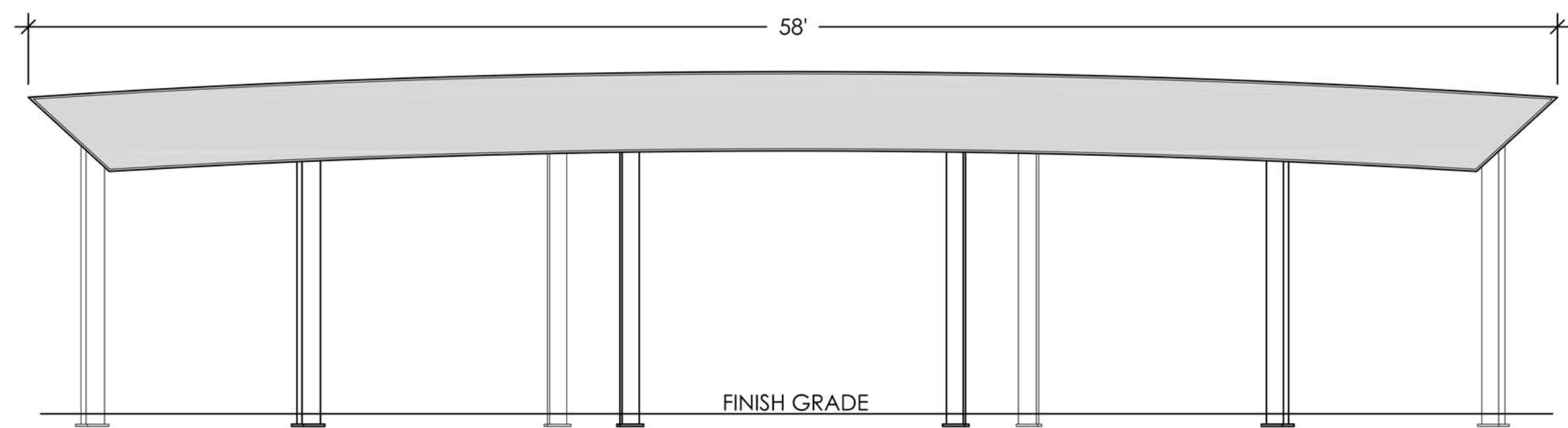


- NOTES:
1. PEDESTRIAN BRIDGE TO BE PREFABRICATED WEATHERING STEEL BRIDGE. LENGTH TO BE DETERMINED.
  2. CONCRETE ABUTMENTS - DESIGN TO BE DETERMINED.



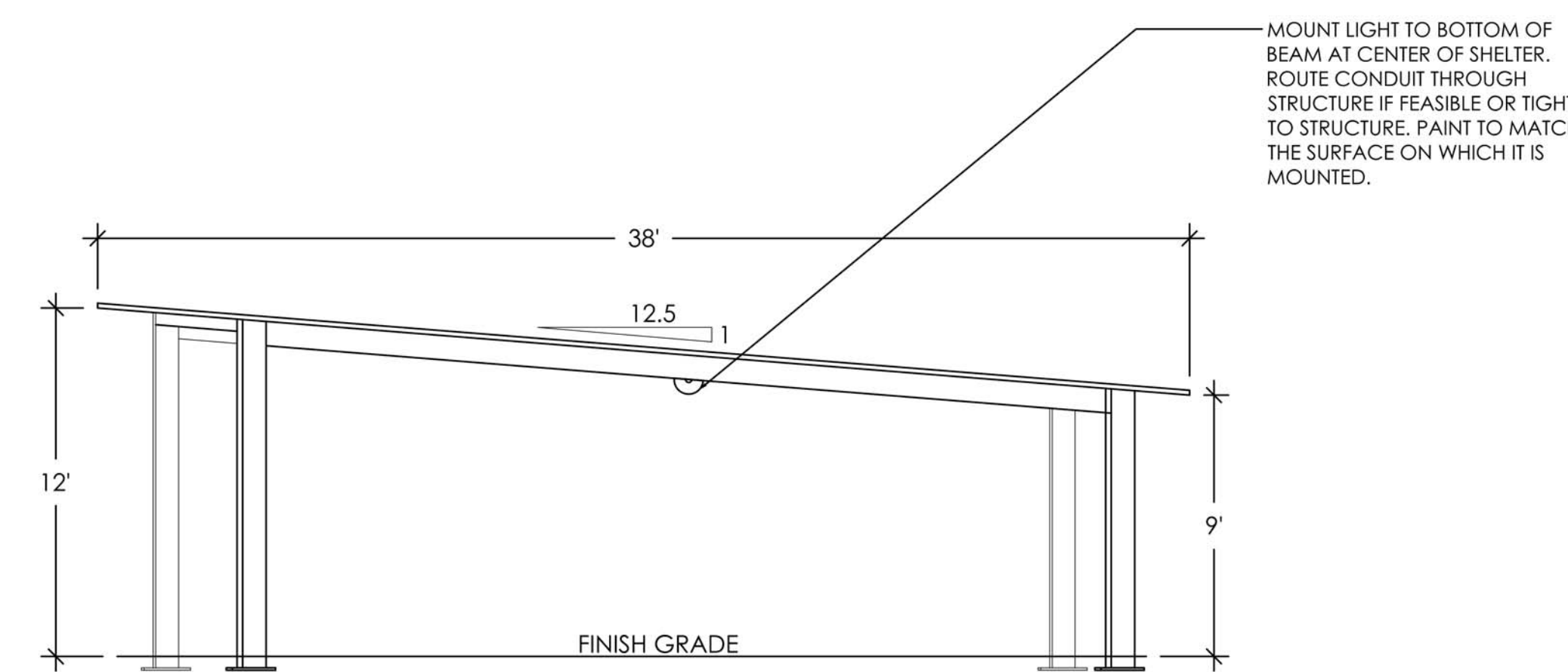
1 CLAM SHELL BACKSTOP  
L-4 ELEVATION NTS

- NOTES:
1. PRE-ENGINEERED, PRE-FABRICATED CURVED SHELTER BY ICON, OR APPROVED EQUAL.
  2. ROOFING MATERIALS TO BE 24 GA. STEEL PANELS, 24 GA. STEEL STANDING SEAM, 2X6 TONGUE & GROOVE PANEL. COORDINATE ROOFING COLOR WITH OWNERS REPRESENTATIVE.
  3. STEEL FRAME TO HAVE POWDER COAT FINISH, COLOR TO BE COORDINATED WITH OWNERS REPRESENTATIVE.



FRONT ELEVATION

2 PEDESTRIAN BRIDGE  
L-4 ELEVATION NTS



SIDE ELEVATION

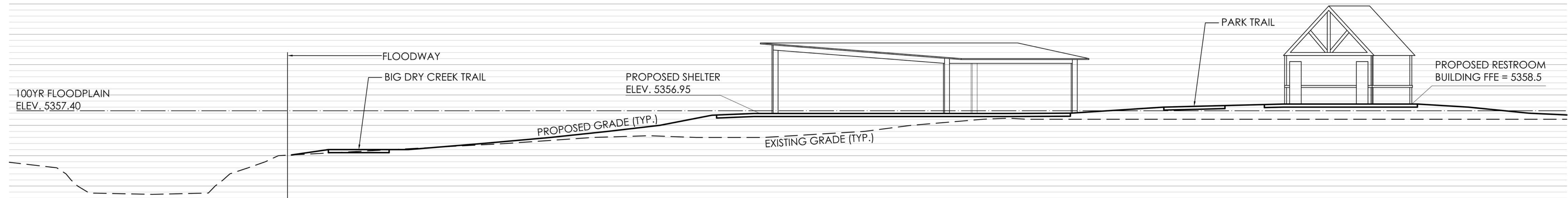
Vision 4  
VPF 4 Series Vandal Resistant LED

WALL /CEILING/PENDANT MOUNT LAMPS: LED

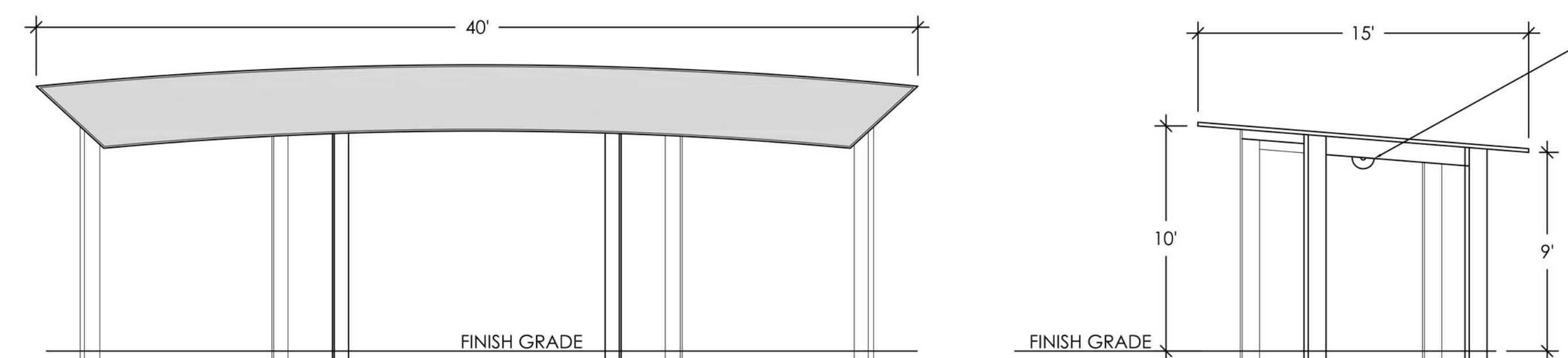
SERIES	LENGTH	LED	CCT	VOLTS	LENS	COLORS	OPTIONS
VPF 4	1 - 12"	12"	3000K	120-277	CP	BLK	J8
	2 - 22"	22"	3000K	120-277	CP	BLK	J8
	3 - 34"	34"	3000K	120-277	CP	BLK	J8
	4 - 46"	46"	3000K	120-277	CP	BLK	J8
	1 - 12"	12"	3000K	120-277	CP	BLK	J8
	2 - 22"	22"	3000K	120-277	CP	BLK	J8
	3 - 34"	34"	3000K	120-277	CP	BLK	J8
	4 - 46"	46"	3000K	120-277	CP	BLK	J8
	1 - 12"	12"	3000K	120-277	CP	BLK	J8
	2 - 22"	22"	3000K	120-277	CP	BLK	J8
	3 - 34"	34"	3000K	120-277	CP	BLK	J8
	4 - 46"	46"	3000K	120-277	CP	BLK	J8

TYPE A:  
SURFACE MOUNTED LED LIGHT, NARROW HOUSING, VANDAL RESISTANT, CAST ALUMINUM HOUSING 4"W x 4" LONG x 3" DEEP, OPAL POLYCARBONATE LENS, SURFACE CONDUIT KNOCK-OUTS FOR SIDE ENTRY, BRONZE FINISH, 40W LED, 3000K, UNIV VOLTAGE, 4200 LUMENS, WET LOCATION LISTED.  
LUMINAIRE LED - VPF4-4-40W HO-3000-120V-OP-BRZ-WET, OR EQUAL.

3 35'x58' SHELTER WITH LIGHTING  
L-4 ELEVATIONS & DETAILS NTS



4 A-A' SECTION  
L-4 SECTION NTS



- NOTES:
1. PRE-ENGINEERED, PRE-FABRICATED CURVED SHELTER BY ICON, OR APPROVED EQUAL.
  2. ROOFING MATERIALS TO BE 24 GA. STEEL PANELS, 24 GA. STEEL STANDING SEAM, 2X6 TONGUE & GROOVE PANEL. COORDINATE ROOFING COLOR WITH OWNERS REPRESENTATIVE.
  3. STEEL FRAME TO HAVE POWDER COAT FINISH, COLOR TO BE COORDINATED WITH OWNERS REPRESENTATIVE.

5 40'x15' SHELTER WITH LIGHTING  
L-4 ELEVATIONS & DETAILS

SUBMITTALS:

ARCHITERRA GROUP  
5981 south deframe street  
littleton, colorado 80127  
303.948.0746 fax 948.0977  
www.architerra.com

PROJECT #: 1582 DRWN BY: JAG DATE: 11-15-17 CHK BY: CML

DETAILS  
PROGRESS PARK  
LITTLETON, COLORADO

SHEET:  
L-4  
4 OF 4