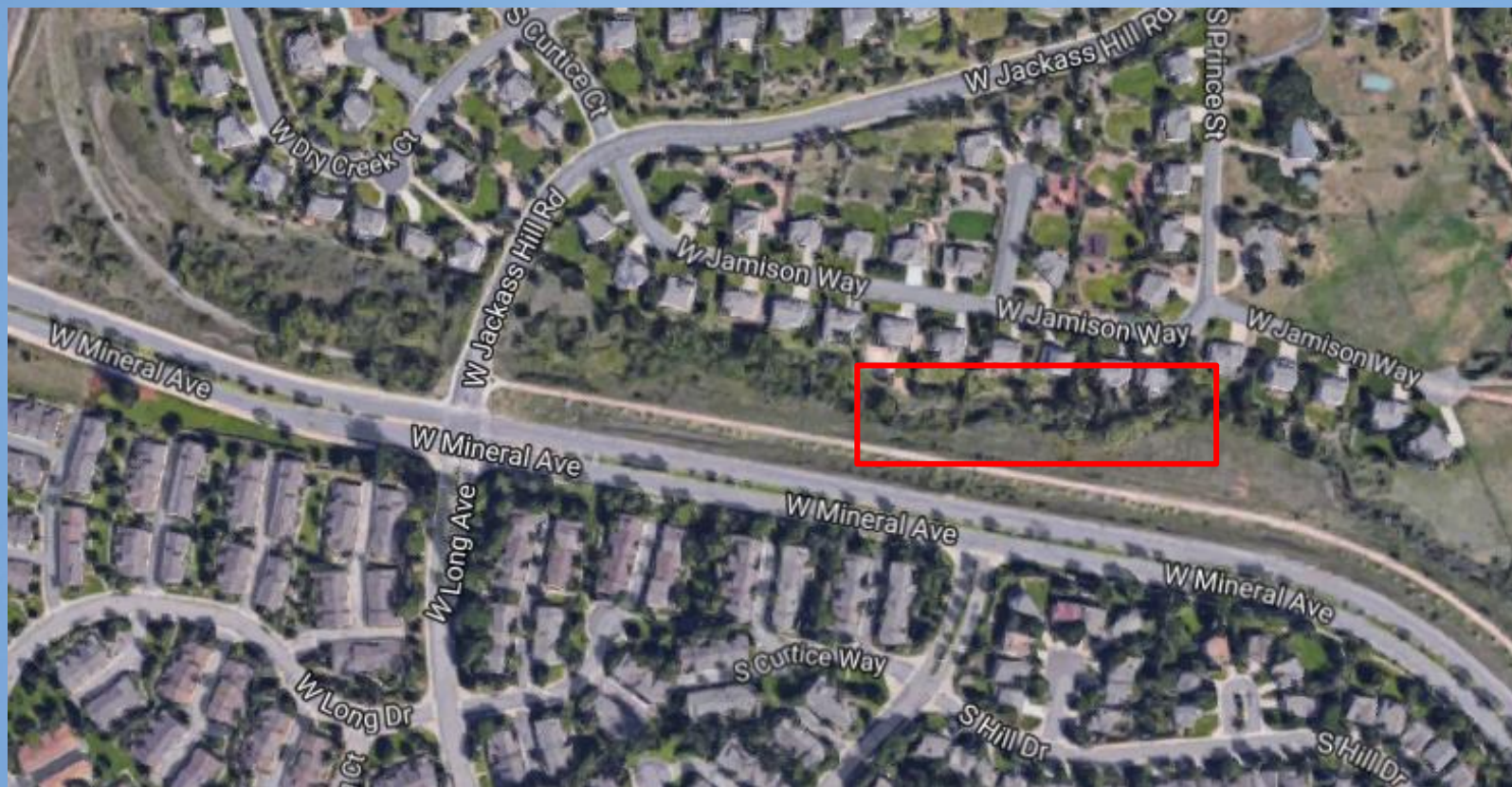




Jackass Gulch

Should \$100K be added to the 2017 Storm and Floodplain Enterprise Fund to help pay for Jackass Gulch stream stabilization south of West Jamison Way, adjacent to Long Avenue?

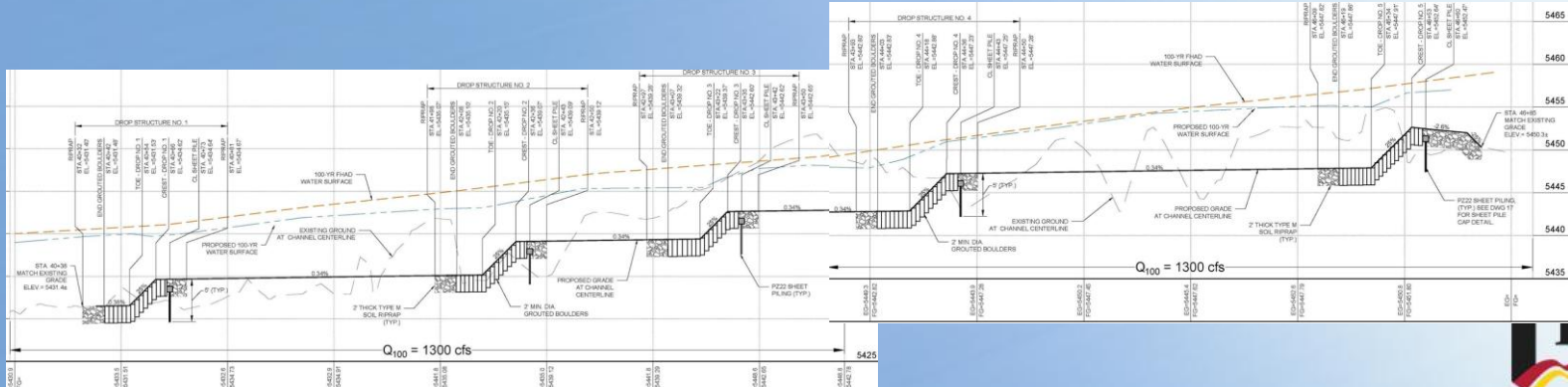
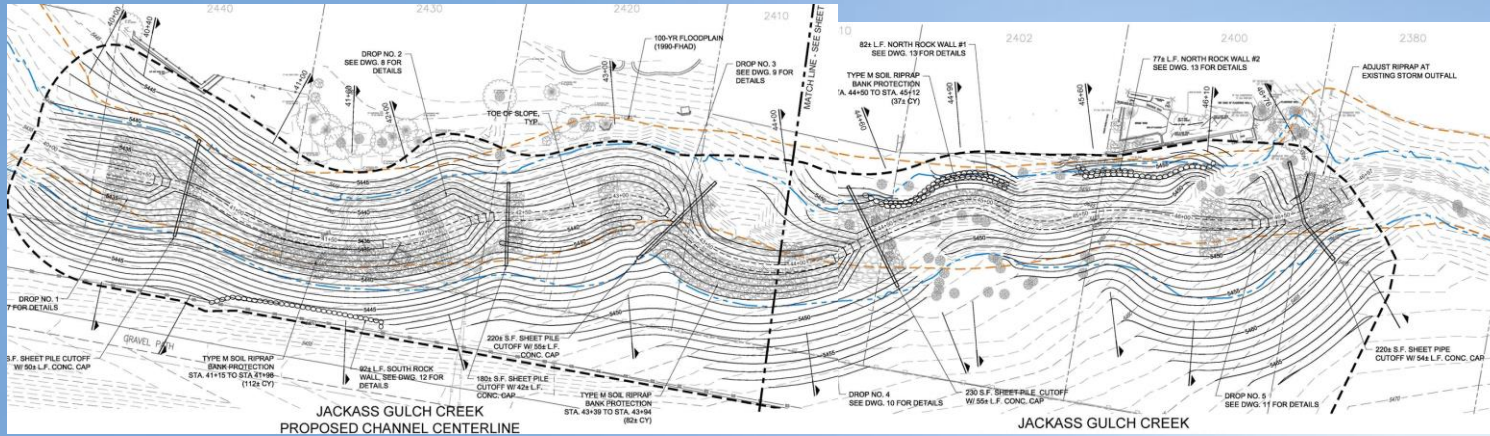


History

- Erosion problem first noted by homeowner in 2006, City met with UDFCD, but project was not initiated
- Rainstorms in 2013 caused sediment to flow down to South Platte River; raised concerns due to recent river restoration work in South Platte Park
- IGA with UDFCD initiated in 2014, to begin design
- Public meeting November 2015, with strong support for the project
- In 2017, design completed and UDFCD selected ECI to build the project
- Littleton had \$200K allocated in the CIP for 2017
- However, Storm Enterprise does not have sufficient funds to cover the full amount (Lee Gulch emergency)



Design



Relationship with UDFCD

- UDFCD receives funding from property taxes/mill levies.
- Each year, updates a 5-year Capital Improvement Plan for all Counties within the District
- Upon request from the local agency, projects are added to the CIP.
- UDFCD determines how much it can fund to each project; local agency must provide matching funds
- UDFCD funds also go to routine maintenance, smaller restoration, repair or maintenance projects, floodplain studies, and master plan updates as requested by the local agency - with little or no local agency funding contributions
- Littleton has routine maintenance performed on the South Platte River, Big Dry Creek, Lee Gulch, Littles Creek and Slaughterhouse Gulch (mowing, debris removal)



Project Budget

2014 Starting budget: \$450,000 (\$225K UDFCD/\$225K Littleton)

Arborforce (invasive tree removal in 2014) - \$16,869

Merrick Engineering (design) - \$159,500

ERO Resources (environmental) - \$12,600

ECI Site Construction (culvert silt clean) - \$ 2,000

August 2017 Balance: \$259,031

Additional need:

Remaining design: -\$10,685

Construction -\$831,267

Remaining engineering/Construction oversight/home inspections -\$122,378

Contingency -\$100,000

Balance (need): \$805,299



Project Budget

Balance (need): \$805,299

Proposed funding for remaining:

\$200,000 UDFCD 2017 contribution

\$100,000 Littleton 2017 contribution

\$100,000 Littleton 2017 reallocation after Council approval *

\$75,000 UDFCD 2018 (CIP budget move from Littles Creek to Jackass Gulch)

\$100,000-150,000 UDFCD 2018 (additional funds available)

\$175,000-\$225,000 Littleton 2018 contribution

\$750,000 - \$ 850,000 (depending on total 2018 contribution)

Total Project Cost = \$ 1.2 - 1.3 Million



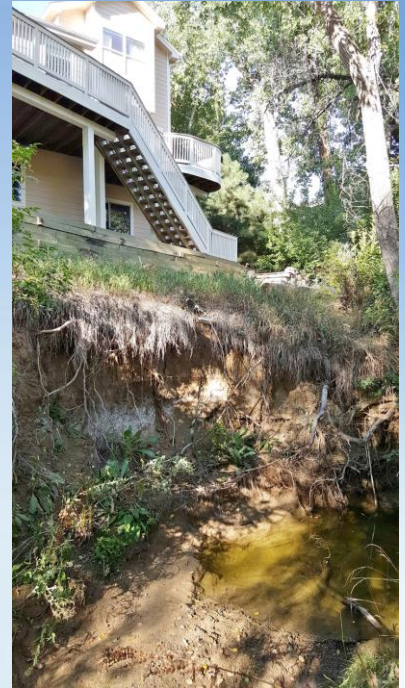
Schedule



- Property owners are anxious for project to begin - erosion moves closer to their homes with each storm
- ECI is ready to begin construction in early November, pending sufficient funds in the account to keep them moving without a gap in funding availability. Might have to start in December after 11/21 Council meeting
- Channel construction expected to last 3-4 months
- Plantings will occur in the spring of 2018 when there are favorable weather conditions

Conclusion

- Seeking Council approval to reallocate \$100,000 to the Storm and Floodplain Enterprise Fund in 2017 in order to maximize UDFCD's match (of \$200K). Littleton has \$100K remaining in the Fund to provide half of the matching funds.



QUESTIONS?

