

6507 AND 6509 S. SANTA FE DRIVE
GENERAL PLANNED DEVELOPMENT PLAN
A PART OF THE SE 1/4 OF SECTION 20, TOWNSHIP 5S, RANGE 68W, OF THE 6TH P.M.
CITY OF LITTLETON, ARAPAHOE COUNTY, STATE OF COLORADO
ILLUSTRATIVE
LANDSCAPE PLAN



No.	Description	DATE	BY

6507 AND 6509 S. SANTA FE DRIVE
GENERAL PLAN DEVELOPMENT PLAN
ILLUSTRATIVE LANDSCAPE PLAN

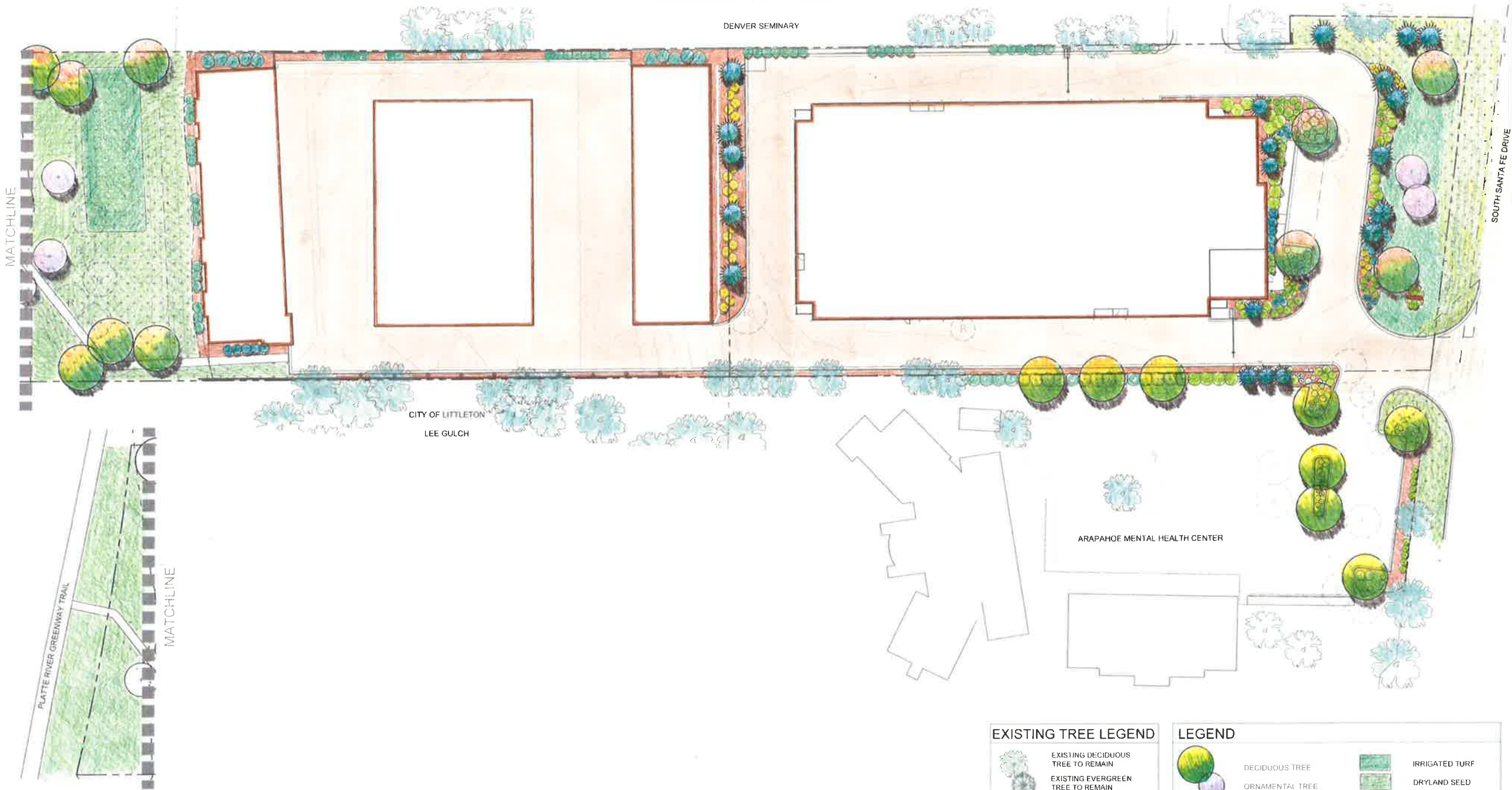
PREPARED BY: JDC
DATE: JANUARY 17, 2017
SCALE: AS SHOWN

CALL UTILITY NOTIFICATION
CENTER OF COLORADO
811
CALL 3 BUSINESS DAYS IN ADVANCE
BEFORE YOU DIG, GRADE, OR EXCAVATE
FOR THE MARKING OF UNDERGROUND
MEMBER UTILITIES



DATE: JANUARY 17, 2017
JOB NUMBER: 658-0201
SCALE:

SHEET
1 OF 1



EXISTING TREE LEGEND

- EXISTING DECIDUOUS TREE TO REMAIN
- EXISTING EVERGREEN TREE TO REMAIN
- EXISTING TREE TO BE REMOVED
- EXISTING TREE TO BE TRANSPLANTED
- EXISTING TREE (DEAD) TO BE REMOVED

LEGEND

- DECIDUOUS TREE
- ORNAMENTAL TREE
- EVERGREEN TREE
- DECIDUOUS SHRUB
- EVERGREEN SHRUB
- ORNAMENTAL GRASS
- IRRIGATED TURF
- DRYLAND SEED
- PLANTING BED MULCH
- PERENNIALS
- STEEL EDGER

