



# South Platte Park Management Plan

**Skot Latona**

**Manager of South Platte Park**

**303.730.1022 x 61011, [skotl@ssprd.org](mailto:skotl@ssprd.org)**

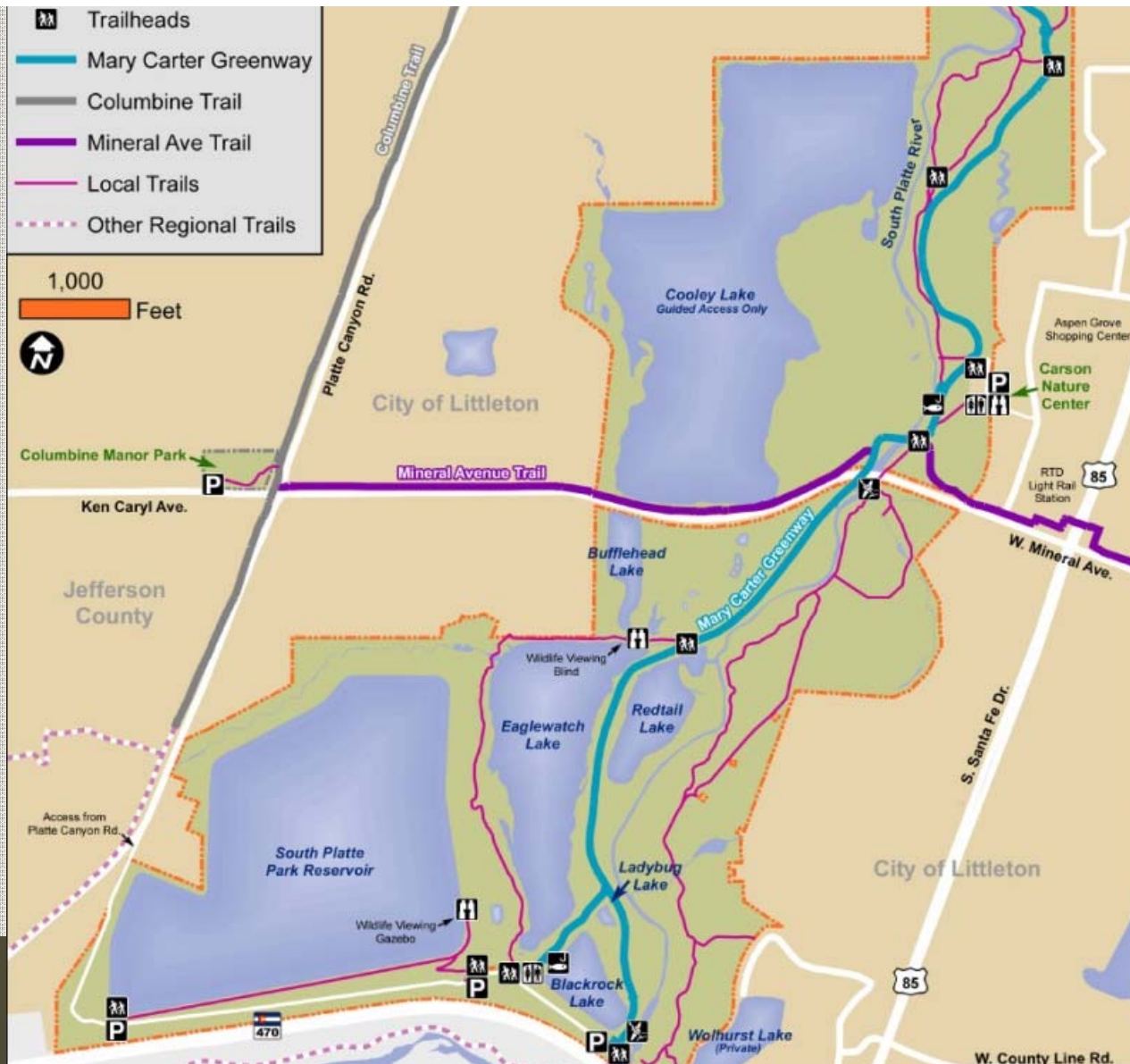
[ssprd.org](http://ssprd.org)













## Park Timeline

- 1965 Flood
- 1966 Park Concept First proposed
- 1967 Chatfield Planning Begins
- 1974 Environmental Planning/Water Resources Recovery Act
- 1975 Chatfield Reservoir completed
- 1982 Master Plan public process
- 1983 Park Established
- 1988 Master Plan update
- 1992 Nature Center Opens
- 1996 First Management Plan Approved





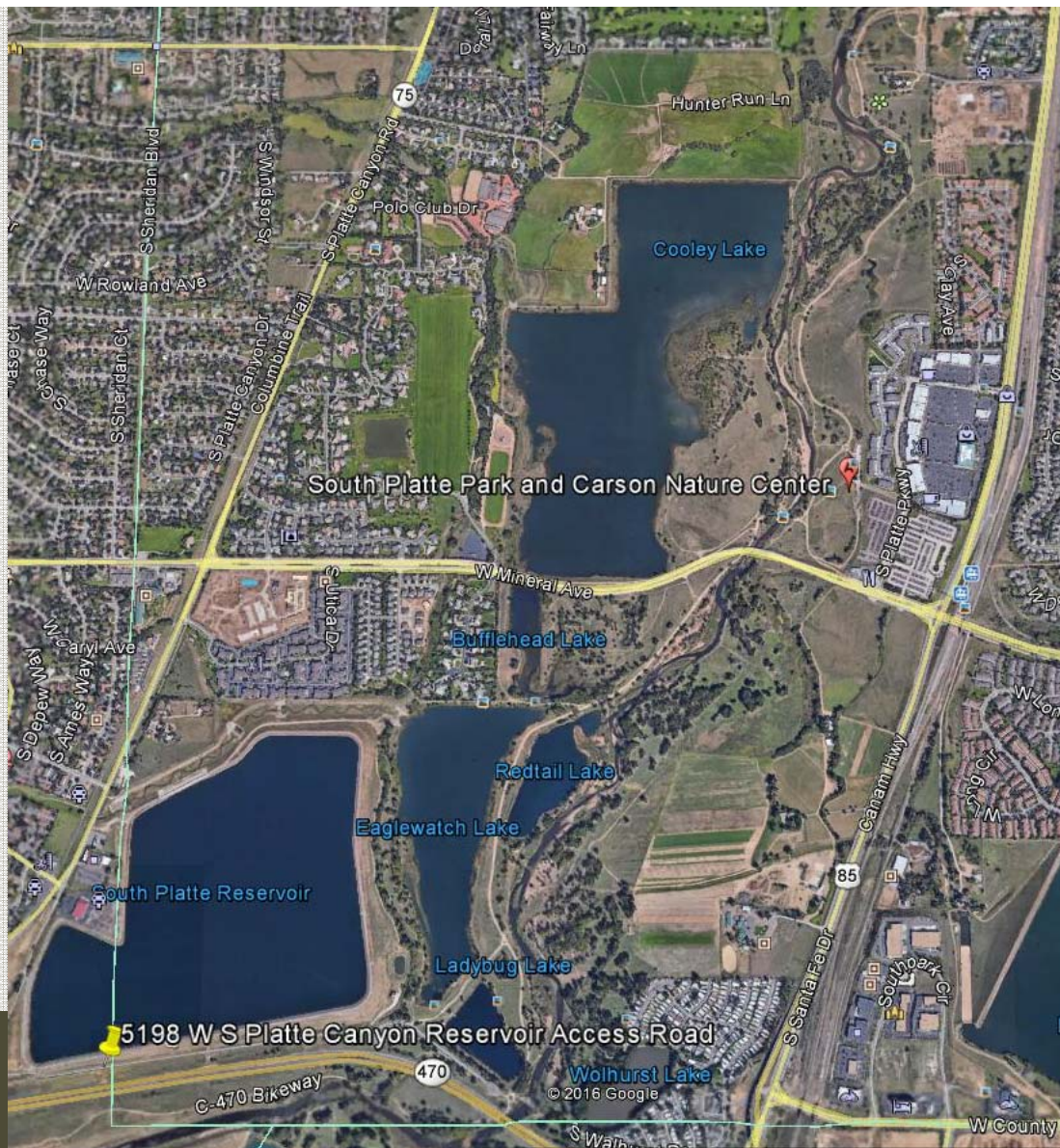
# Management Plan Updates

- 1999 and 2009 Management Plan updated
- Nov 8, 2016 update draft presented to Council/Board Joint Session
- Dec 15 - Public meeting on Management Plan held
- Dec 18 - Final comments due
- May 23 – Study Session to Council/Board Joint Session
- May 24 – Presentation to SSPR Public Session









ssprd.org







[ssprd.org](http://ssprd.org)

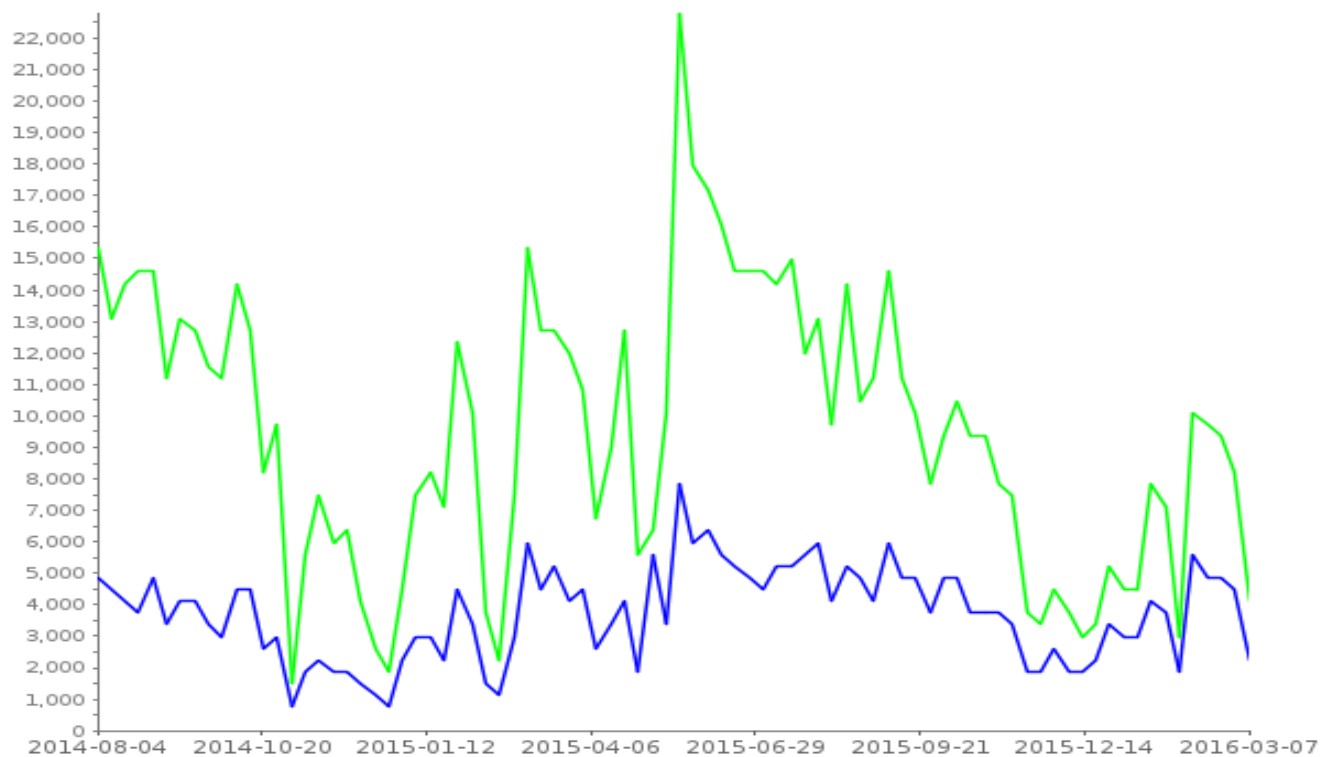




## Weekly\* totals report

Covering 84 weeks from 2014-08-04 to 2016-03-13

Report generated on 2016-09-09 by skotl@sspr.org



Site Name		Average	Min	Max	
MineralPedBridge <sup>A</sup>	<span style="color: green;">■</span>	9,715.2	1,665.0	22,807.0	Totals
NatureCenterTrihd <sup>A</sup>	<span style="color: blue;">■</span>	3,937.8	756.0	8,223.0	Totals





## Plan Changes – What's New

- Management sites more defined (updated figures)
- Easements compiled and illustrated
- Definition of “collecting” expanded to include minerals and crayfish trapping
- Water section expanded to discuss water rights
- Wildlife management section expanded to provide more direction





## Plan Changes – What's New

- Closing times clarified for trail vs Park
- Trail width up to 12' allowed for Greenway only
- Signage plan update
- Swimming and bathing clarified to address tubing/flyfishing
- Motorized, remote control devices not permitted





## What ISN'T New?

- A core habitat area
- Use-intensity zones
- Prioritizing the natural area experience over organized or intensive recreation
- Trail and facility standards
- East Trail Wildlife area experience and access points





## Public Comments

- Primarily in support of current policies
- A few requesting more detail or clarification were addressed
- Editorial changes and corrections
- Comments addressing the proposed Limits of Acceptable Change model





## Limits of Acceptable Change Model

- model has many merits
- requires a more in-depth planning and visitor studies than the scope of this update
- comments led to including more detail on the intended experience of the various use-zones
- Appendix 2 – goals unchanged/processes turned into more specific objectives
- Staff will begin collecting more data on key indicators to establish baseline for future mgmt recommendations





## Amendment to Agreement

- Approval process applied to all major projects
- Remove language about retired equipment
- Clarify purchasing and joint ownership
- Update liability insurance requirements
- Transfer management of the water gauge to SSPR