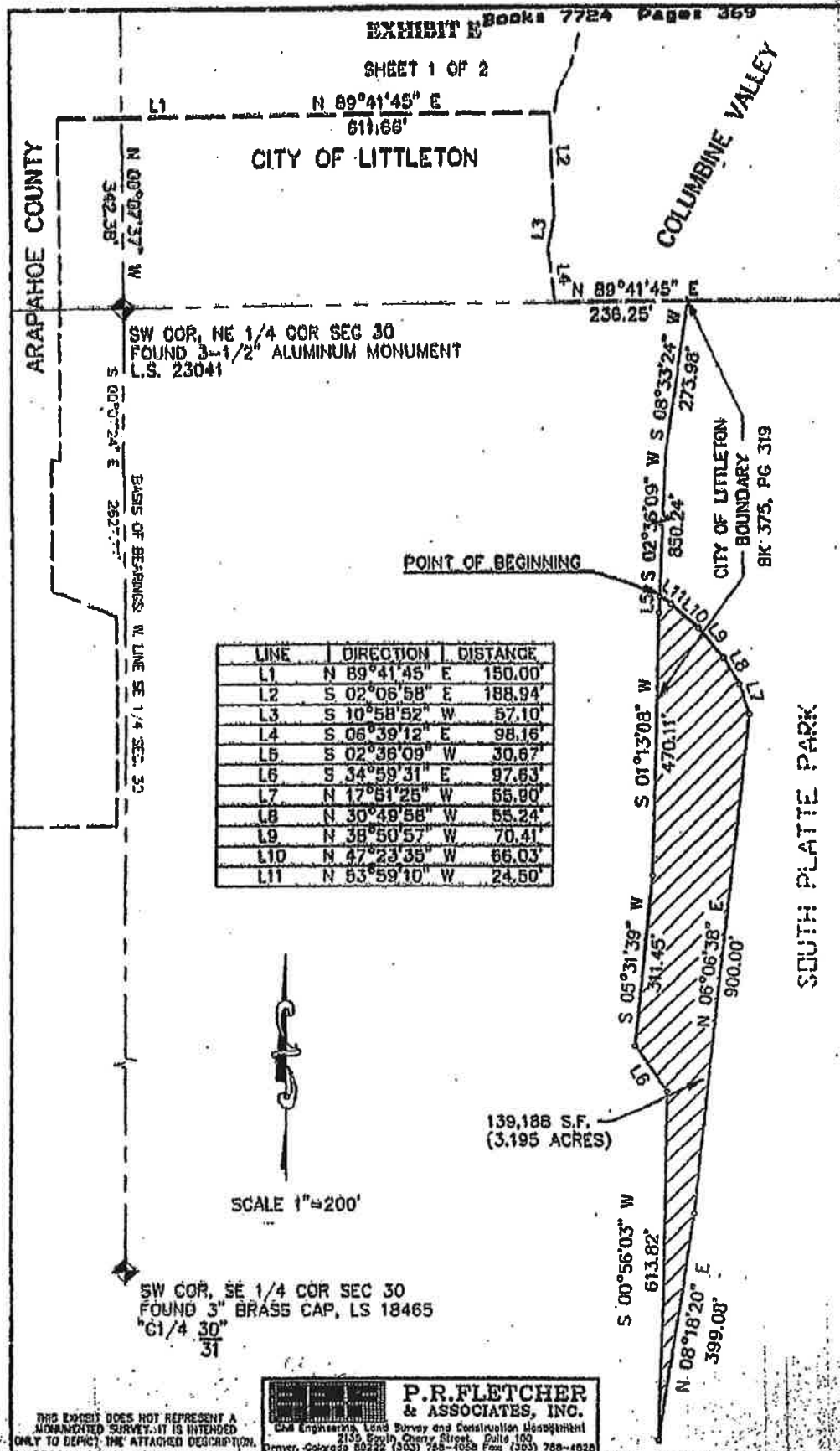


# EXHIBIT "A"

Page 1 of 2

Books 7724 Pages 1



**EXHIBIT E**  
**Books: 7724 Pages: 370**  
**SHEET 2 OF 2**

**LEGAL DESCRIPTION**

A PARCEL OF LAND LOCATED IN SECTION 30, TOWNSHIP 5 SOUTH, RANGE 68 WEST OF THE 6th PRINCIPAL MERIDIAN, CITY OF LITTLETON, COUNTY OF ARAPAHOE, STATE OF COLORADO, MORE PARTICULARLY DESCRIBED AS FOLLOWS:

COMMENCING AT THE SOUTHWEST CORNER OF THE NORTHEAST ONE-QUARTER OF SAID SECTION 30 WHENCE THE SOUTHWEST CORNER OF THE SOUTHEAST ONE-QUARTER OF SAID SECTION 30 BEARS S 00°07'24" E, A DISTANCE OF 2627.77 FEET WITH ALL BEARINGS CONTAINED HEREIN RELATIVE THERETO; THENCE N 00°07'37" W, A DISTANCE OF 342.38 FEET TO THE BOUNDARY LINE OF THE CITY OF LITTLETON; THENCE THE FOLLOWING TWO COURSES ALONG SAID BOUNDARY LINE;

1) N 89°41'45" E, A DISTANCE OF 150.00 FEET;  
 2) N 89°41'45" E, A DISTANCE OF 611.66 FEET TO A FENCE ALONG THE WEST BANK OF NEVADA DITCH; THENCE CONTINUING ALONG SAID BOUNDARY LINE THE FOLLOWING THREE COURSES ALONG SAID FENCE:  
 1) S 02°06'58" E, A DISTANCE OF 188.94 FEET;  
 2) S 10°58'52" W, A DISTANCE OF 57.10 FEET;  
 3) S 06°39'12" E, A DISTANCE OF 98.16 FEET; THENCE N 89°41'45" E CONTINUING ALONG SAID BOUNDARY LINE, A DISTANCE OF 236.25 FEET TO THE WEST LINE OF THE BOUNDARY OF THE CITY OF LITTLETON AS RECORDED IN BOOK 3757 AT PAGE 319 OF SAID ARAPAHOE COUNTY CLERK AND RECORDERS OFFICE; THENCE THE FOLLOWING TWO COURSES ALONG SAID BOUNDARY LINE;

1) S 08°33'24" W, A DISTANCE OF 273.98 FEET;  
 2) S 02°36'09" W, A DISTANCE OF 850.24 FEET TO THE POINT OF BEGINNING; THENCE CONTINUING ALONG SAID BOUNDARY LINE THE FOLLOWING FIVE COURSES;

1) S 02°36'09" W, A DISTANCE OF 30.67 FEET;  
 2) S 01°13'08" W, A DISTANCE OF 470.11 FEET;  
 3) S 05°31'39" W, A DISTANCE OF 311.45 FEET;  
 4) S 34°59'31" E, A DISTANCE OF 97.63 FEET;  
 5) S 00°56'03" W, A DISTANCE OF 613.82 FEET; THENCE N 08°18'20" E, A DISTANCE OF 399.08 FEET; THENCE N 06°08'38" E, A DISTANCE OF 900.00 FEET; THENCE N 17°51'25" W, A DISTANCE OF 55.90 FEET; THENCE N 30°49'58" W, A DISTANCE OF 58.24 FEET; THENCE N 38°50'57" W, A DISTANCE OF 70.41 FEET; THENCE N 47°23'35" W, A DISTANCE OF 66.03 FEET; THENCE N 53°59'10" W, A DISTANCE OF 24.50 FEET TO THE POINT OF BEGINNING. SAID PARCEL CONTAINS 139,188 SQUARE FEET (3.195 ACRES) MORE OR LESS.

**SURVEYOR'S CERTIFICATE:**

I, THOMAS D. STAAB, A PROFESSIONAL LAND SURVEYOR, REGISTERED IN THE STATE OF COLORADO, DO HEREBY CERTIFY THAT THIS LEGAL DESCRIPTION WAS PREPARED UNDER MY DIRECT SUPERVISION AND IS ACCURATE TO THE BEST OF MY KNOWLEDGE AND BELIEF.

THOMAS D. STAAB  
 P.L.S. 25965  
 FOR AND ON BEHALF OF  
 P.R. FLETCHER & ASSOCIATES, INC.



THIS EXHIBIT DOES NOT REPRESENT A  
 MONUMENTED SURVEY. IT IS INTENDED  
 ONLY TO DEPICT THE ATTACHED DESCRIPTION.

**P.R. FLETCHER  
 & ASSOCIATES, INC.**  
 Civil Engineering, Land Survey and Construction Management  
 2135 South Cherry Street, Suite 100  
 Denver, Colorado 80222 (303) 758-4034 Fax: (303) 758-4828