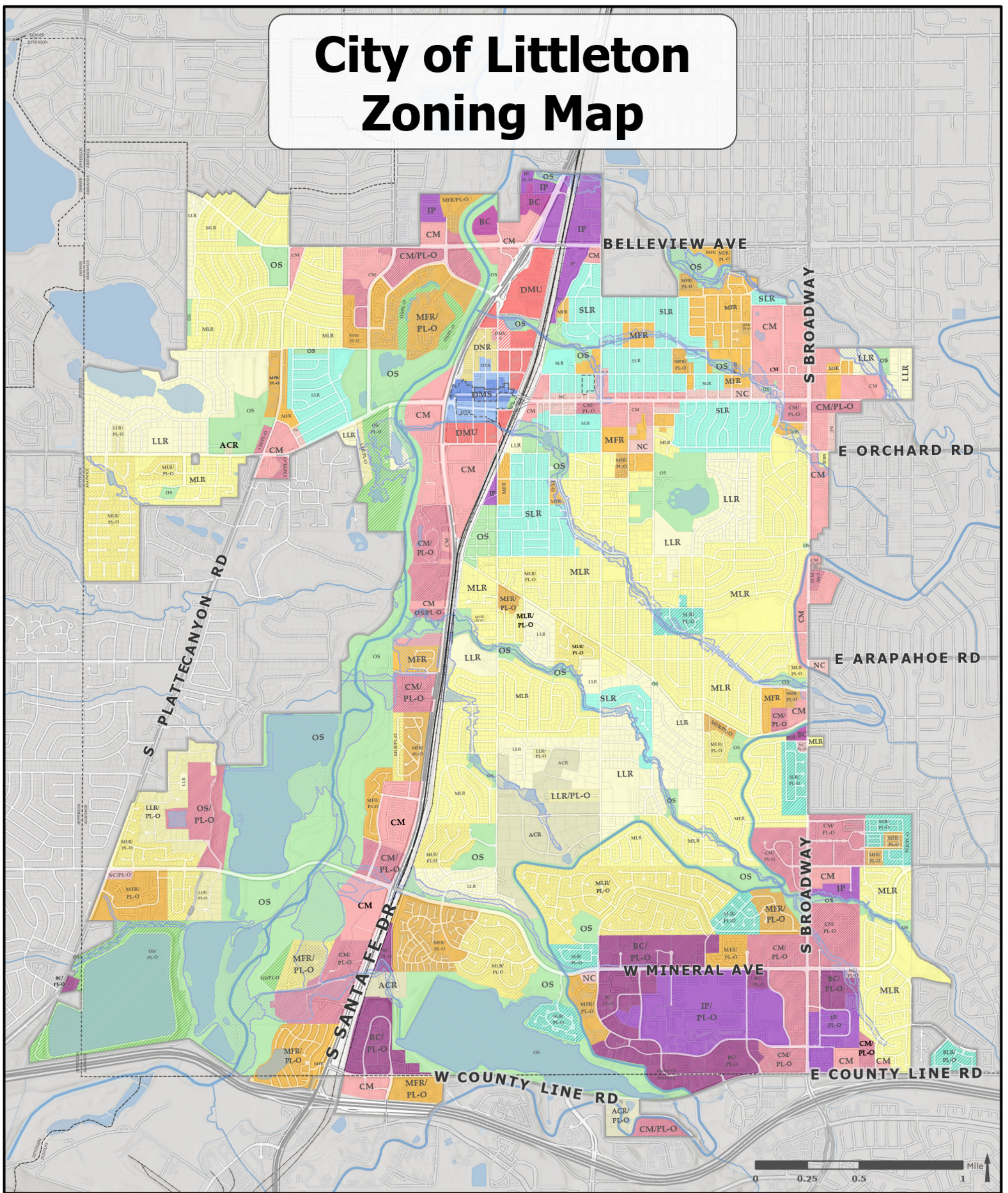
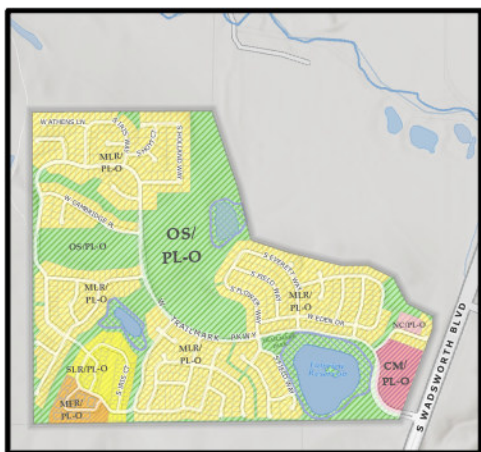


# City of Littleton Zoning Map



## Trailmark



## Zoning Districts

- |   |  |  |  |
|---|--|--|--|
| ACR/Acreage Residential                               | DMU/Downtown Mixed-Use                           | LLR PL-O/Large Lot Residential Planned Overlay District    | NC/Neighborhood Commercial                               |
| ACR PL-O/Acreage Residential Planned Overlay District | DMU 3/Downtown Mixed-Use 3 Stories               | MFR/Multi-Family Residential                               | NC PL-O/Neighborhood Commercial Planned Overlay District |
| BC Business Center                                    | DNR/Downtown Neighborhood Residential            | MFR PL-O/Multi-Family Residential Planned Overlay District | OS/Open Space  |
| BC PL-O/Business Center Planned Overlay District      | DTA/Downtown Transition Area                     | MLR/Medium Lot Residential                                 | OS PL-O/Open Space Planned Overlay District              |
| CM/Corridor Mixed                                     | IP/Industrial Park                               | MLR PL-O/Medium Lot Residential Planned Overlay District   | SLR/Small Lot Residential                                |
| CM PL-O/Corridor Mixed Planned Overlay District       | IP PL-O/Industrial Park Planned Overlay District |  | SLR PL-O/Small Lot Residential Planned Overlay District  |
| DMS/Downtown Main Street                              | LLR/Large Lot Residential                        |  |  |

Disclaimer: These map products and all underlying data were developed for use by the City of Littleton for its internal purposes only, and were not designed or intended for general use by members of the public. The city makes no representation or warranty as to its accuracy, timeliness, or completeness, and to the contrary, its accuracy, timeliness, or completeness, or placement or location of any map features thereon. THE CITY OF LITTLETON MAKES NO WARRANTY OF MERCHANTABILITY OR WARRANTY FOR FITNESS FOR A PARTICULAR PURPOSE, EXPRESSED OR IMPLIED, WITH RESPECT TO THESE MAP PRODUCTS OR THE UNDERLYING DATA. Any users of these map products, map applications, or data, accepts same AS IS, WITH ALL FAULTS, and assumes all responsibility for the use thereof, and further covenants and agrees to hold the city harmless from and against all damage, loss, or liability arising from any use of this map product, in consideration of the city's having made this information available.