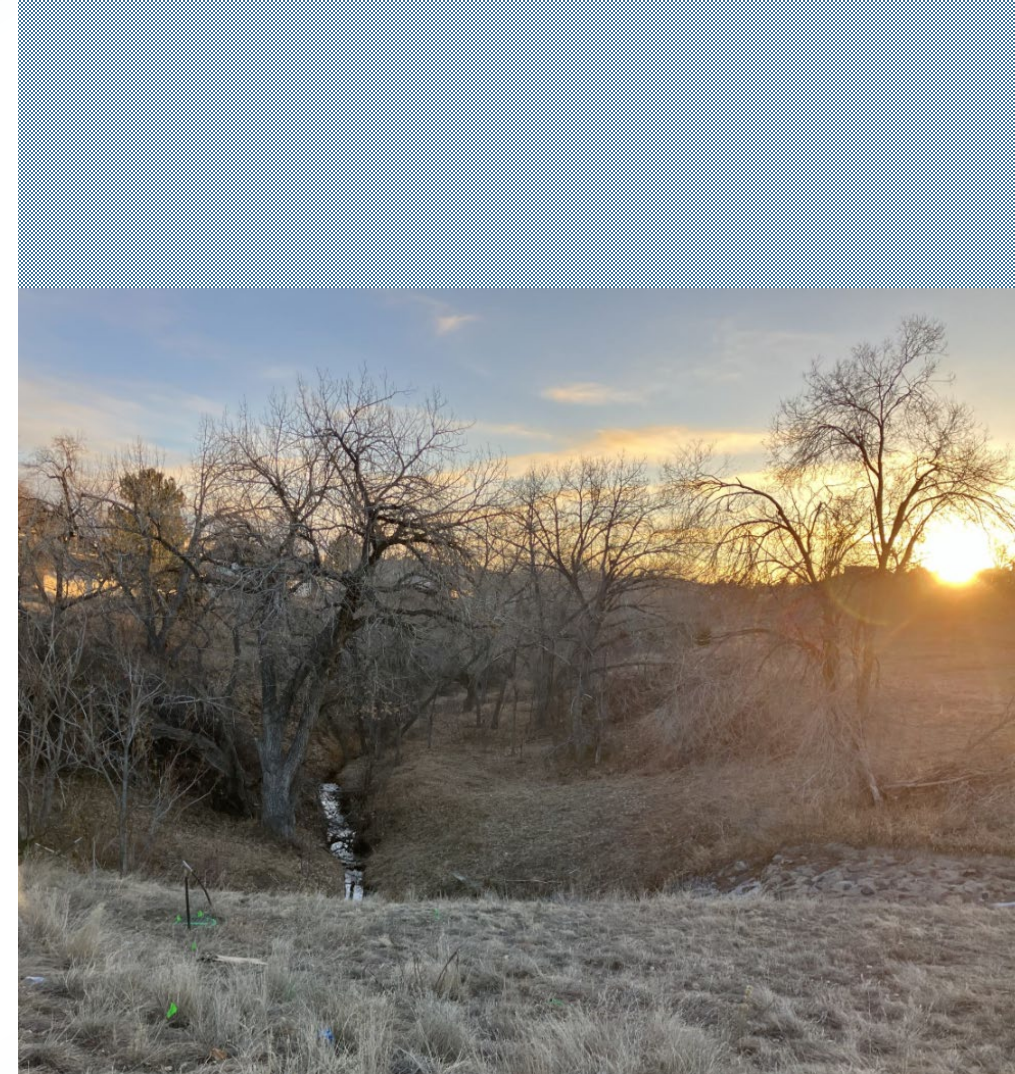


# LEE GULCH TRAIL PEDESTRIAN UNDERPASS

RES 47-2025; RES 48-2025;  
AND RES 49-2025

Sarah White, Water Resources Manager  
Brent Soderlin, Director of Public Works &  
Utilities

MAY 6, 2025



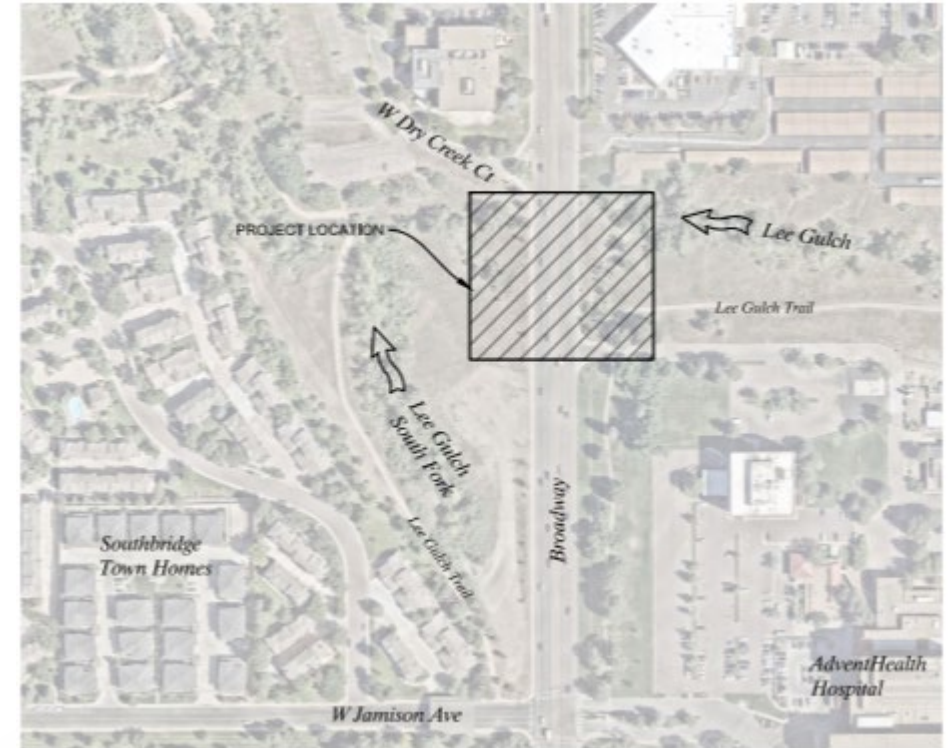
# RESOLUTIONS

- **Resolution 47-2025:** Approving an Intergovernmental Agreement between the City of Littleton and the Board of County Commissioners of the County of Arapahoe, State of Colorado Regarding the 2025 Contribution of Arapahoe County Open Space Program Funds for the Lee Gulch Trail Pedestrian Underpass
- **Resolution 48-2025:** Approving an Intergovernmental Agreement between the City of Littleton and South Suburban Parks and Recreation District regarding Funding Contributions, Construction, and Maintenance of the Lee Gulch Trail Pedestrian Underpass Project
- **Resolution 49-2025:** Approving a Third Amendment to the Intergovernmental Agreement with Mile High Flood District, regarding design and construction of drainage and flood control improvements for Lee Gulch at Broadway

# PROJECT OVERVIEW

## Lee Gulch at Broadway

- Emergency culvert repairs are required
- Full excavation of Broadway
- 1978 Lee Gulch Major Drainageway Plan (MDP)
  - Broadway overtops in large storms, pipe upsizing recommended
  - Lee Gulch Regional Trail



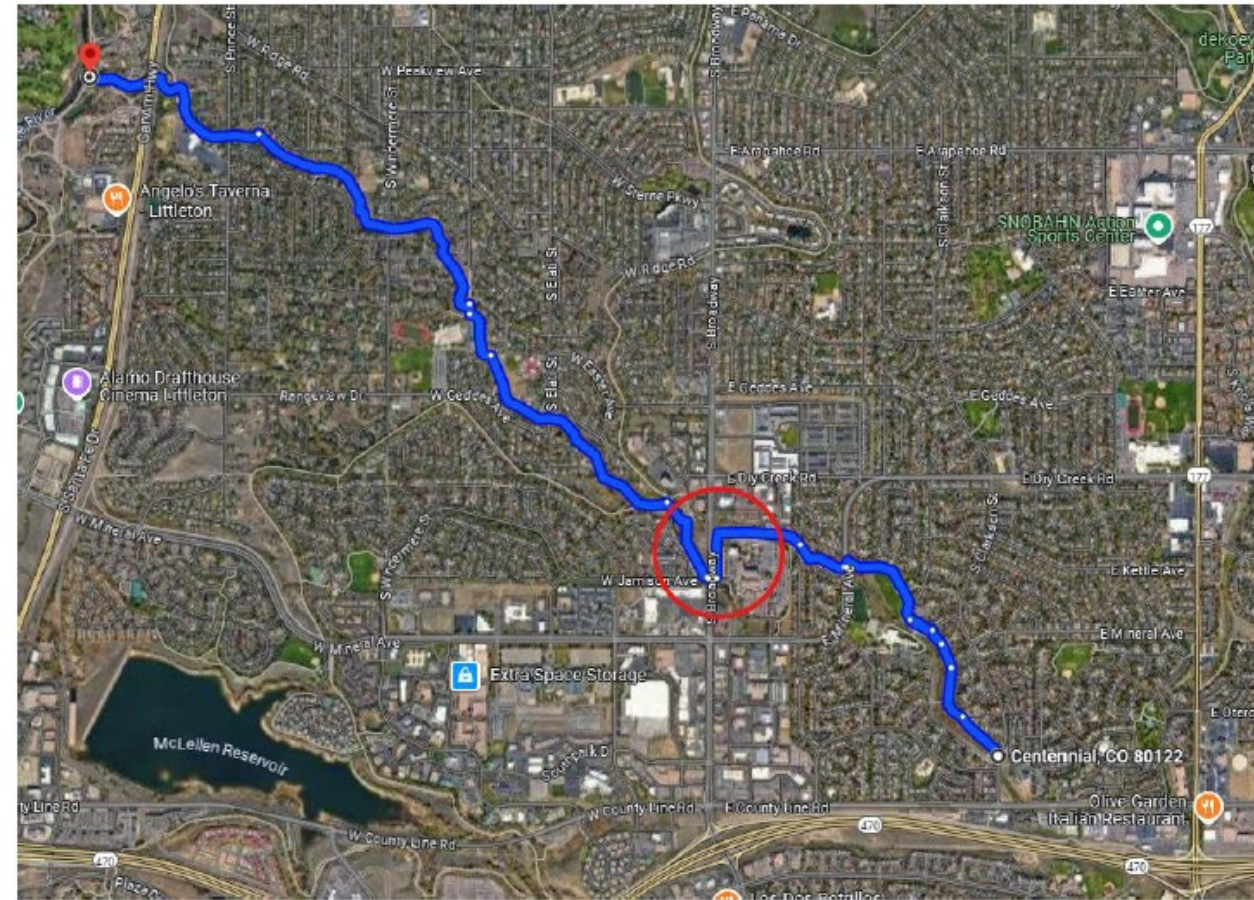
VICINITY MAP



# LEE GULCH TRAIL

## Master Plans

- 1978 SSPRD Master Plan, Littleton and Arapahoe County Land Use Plans
  - Envisioned linear park along Lee Gulch from South Platte River to County Line Road.
  - Recreational trail along all reaches.
- 2019 Littleton Transportation Master Plan
  - Grade separated crossing identified.
- 2019 The Plan for the High Line Canal
  - Identifies this location as an "Opportunity Area".
- 2022 South Suburban Master Plan
  - Trails are the most requested priority for improvement.
  - Guiding Principle to "Connect Community" through close to home trails that contribute to quality of life.
- 2023 Littleton Linkages Trail Study
  - Improve crossing, underpass future consideration



County Line Rd to the South Platte River



# LEE GULCH TRAIL



Walker taking east side detour

## Community Feedback

(Littleton Linkage 2023)

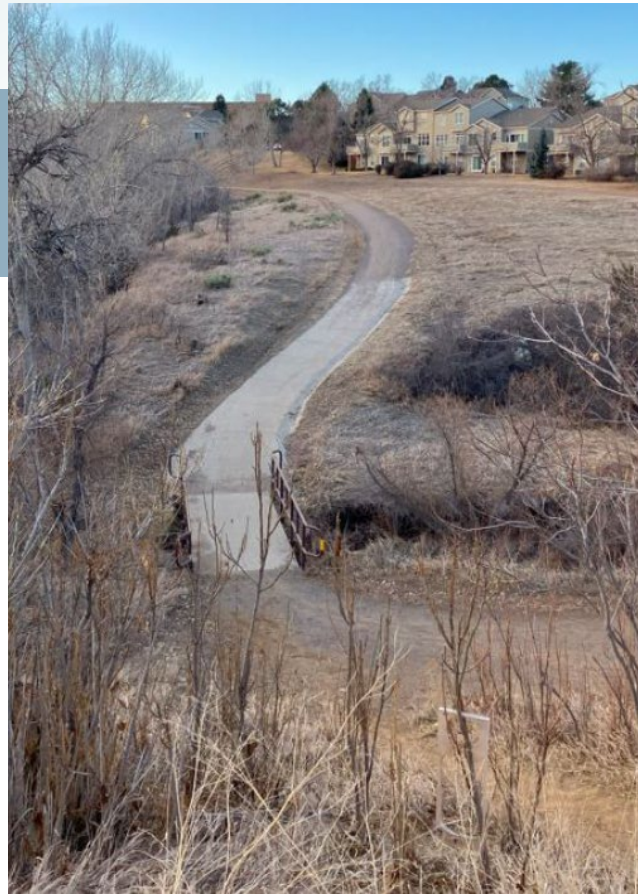
- “Also in a few places, like Broadway, crossing the busy roads make the trails less easy to use.”
- “Unsafe street crossings and poor (trail) connectivity.”
- “Unsafe crossing at Broadway and Lee Gulch. This a necessary improvement.”
- “Crossing Broadway is awful.”



# LEE GULCH TRAIL

## Detour at Broadway

- Crossing at hospital emergency Access
- East detour along hospital property
- West detour steep grade
- 92,000 trail users near LG & HLC mile 20



Western Slopes



East Detour at Littleton Adventist Hospital



Crossing at Broadway

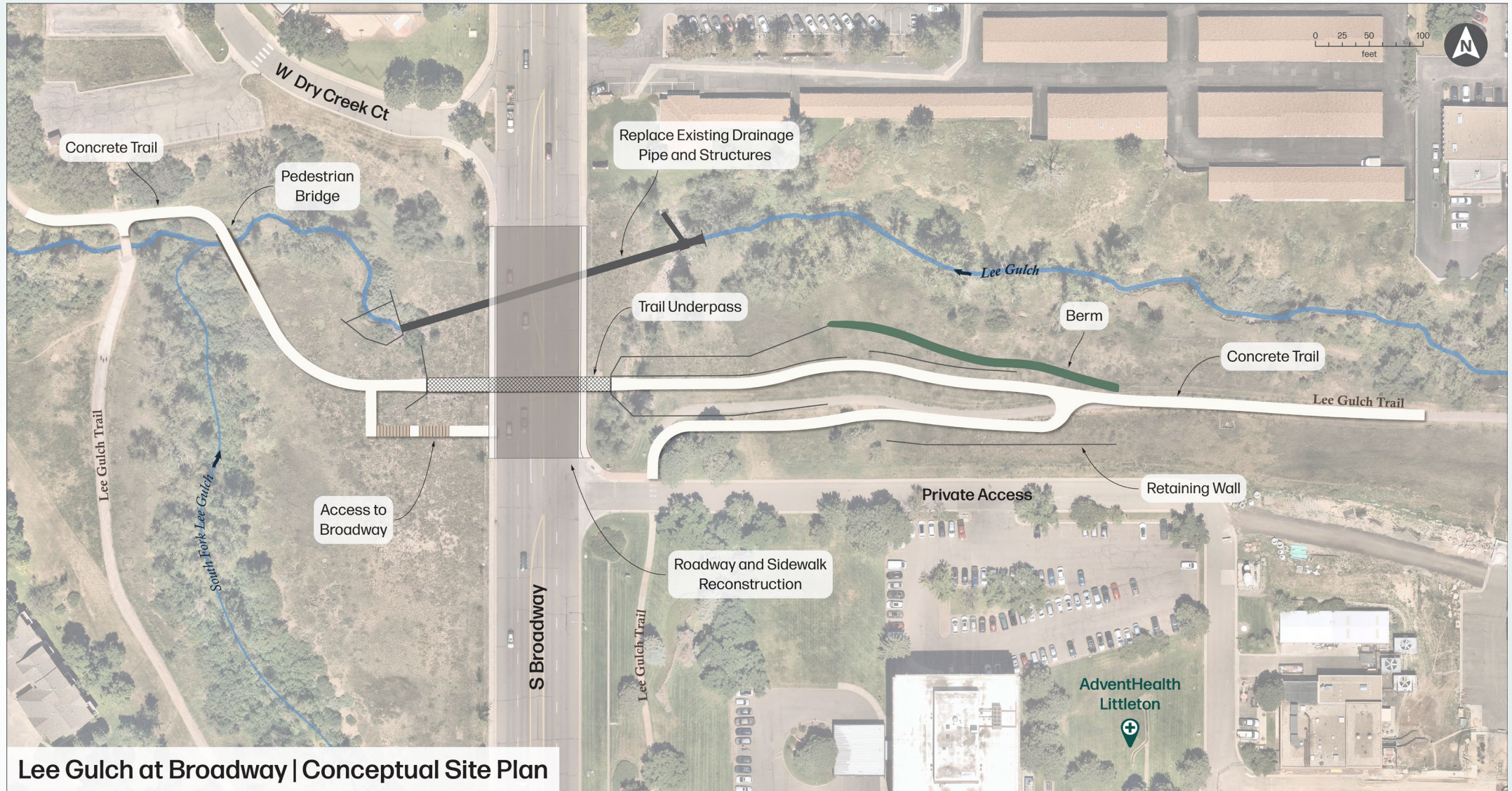


## Vicinity Map - Lee Gulch Trail at Broadway - Pedestrian Underpass





# PROPOSED DESIGN



Littleton



# PROJECT COSTS

Total Project (construction costs only) based on funding estimates 1/2025

- \$7,864,625

Cost Culvert Repairs Alone (no underpass option)

- \$3,469,058

Trail Improvements (split overhead costs with culvert repairs)

- \$4,216,159

For comparison:

- Highline Canal at Arapahoe Rd – Box Culvert Replacement Estimate \$10.6 Million (2022)



# PROPOSED PARTNER FUNDING

## ACOS Joint Grant Request

■ Underpass Project Costs	\$4,216,159.00
---------------------------	----------------

## Funding partner shares

■ Grant Request Amount (50%)	\$2,108,079.00
■ Approved March 25, 2025	
■ Project Partner SSPRD (25%)	\$1,054,040.00
■ Approved March 12, 2025	
■ City of Littleton Match (25%)	\$1,054,040.00



# OPERATIONS AND MAINTENANCE

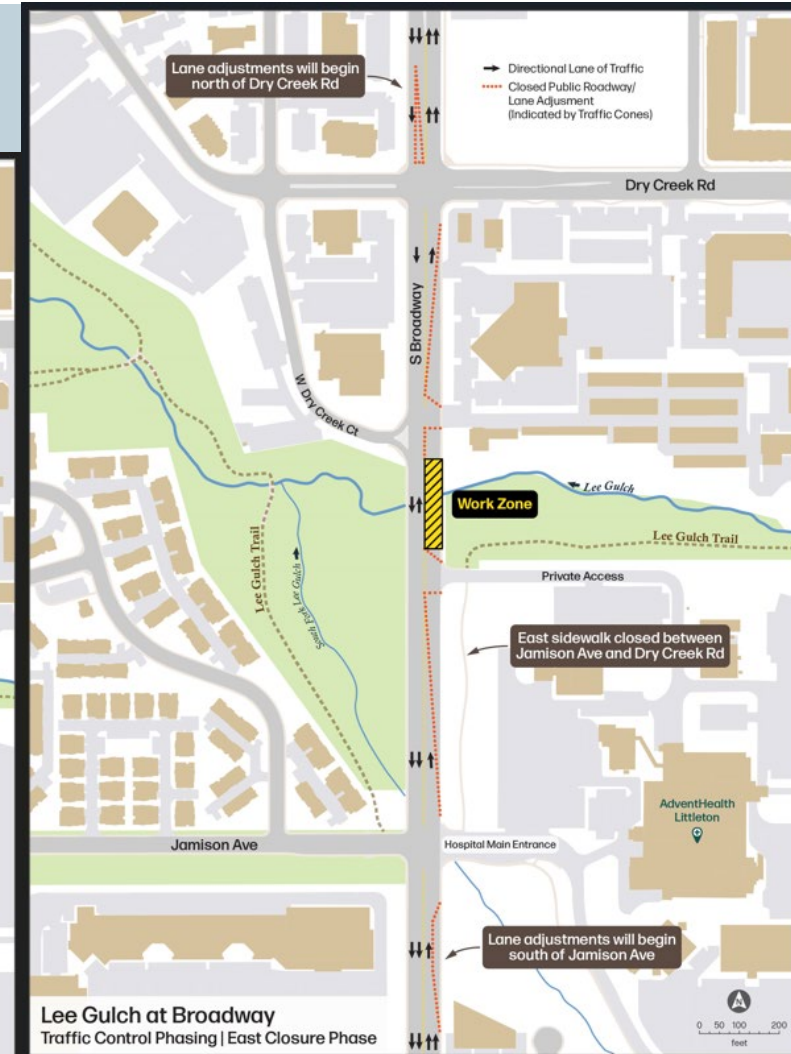
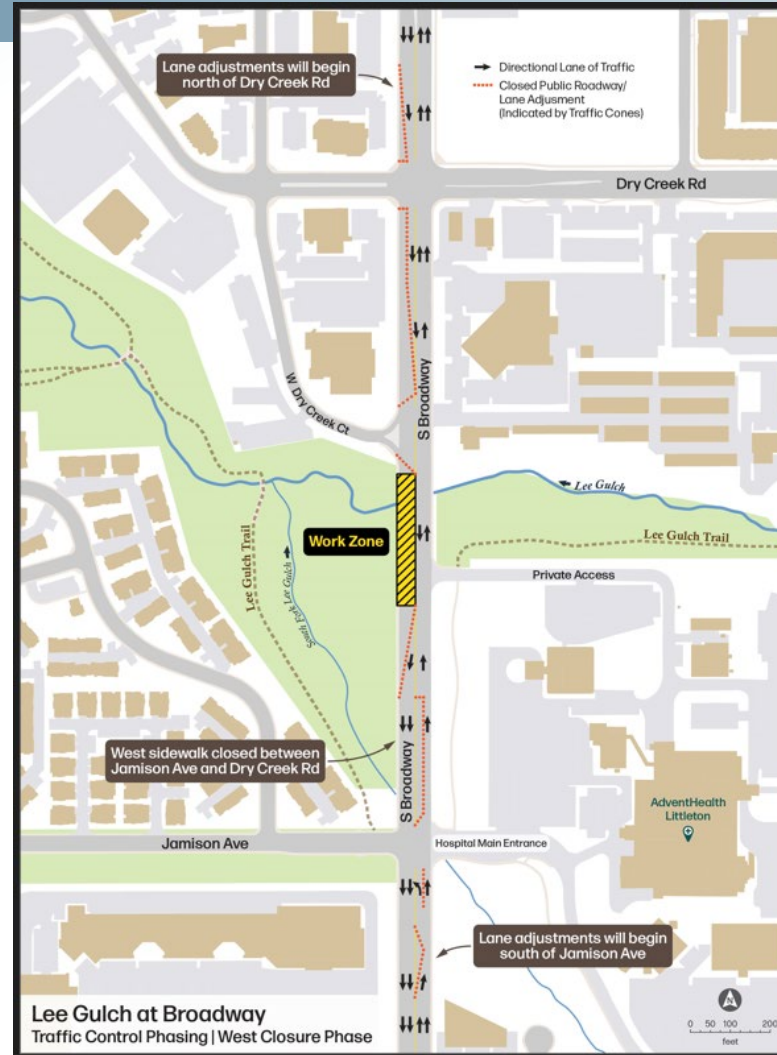
## Pedestrian Underpass and Trail Connection

- South Suburban Park and Recreation District has committed to maintain the underpass, bridge, trail, and surrounding open space.
- Expenses related to operations and maintenance will be paid for from South Suburban's operating budget.
- The estimated additional annual maintenance cost is \$7,680.



# TRAFFIC IMPACTS

- Roadway excavation over 30 ft deep
- Partial road closure – minimum 1 lane open in each direction
- Alternative configurations being explored
- Working with EMS to solidify TCP
- Current estimates 6 months on interruption to Broadway



TCP shown are for reference only not final design

# TIMELINE

April 2025 - May 2025

- Begin Site Work & Utility Coordination

May 2025 – December 2025

- Culvert, Underpass and Roadway Work

December 2025 – May 2026

- Floodplain, Trail and Bridge Work

June 2026 – August 2026

- Revegetation of Disturbed Areas

October 2026

- Project Complete



# SUMMARY

- Emergency culvert repairs are providing unplanned opportunity to install long envisioned missing trail link.
- Current master plans identify the need for trail connections.
- Provides safer street crossing for trail users.
- Combining projects provide cost sharing benefit.
- A truly unique opportunity.

# RECOMMENDATION

Staff recommends approval of:

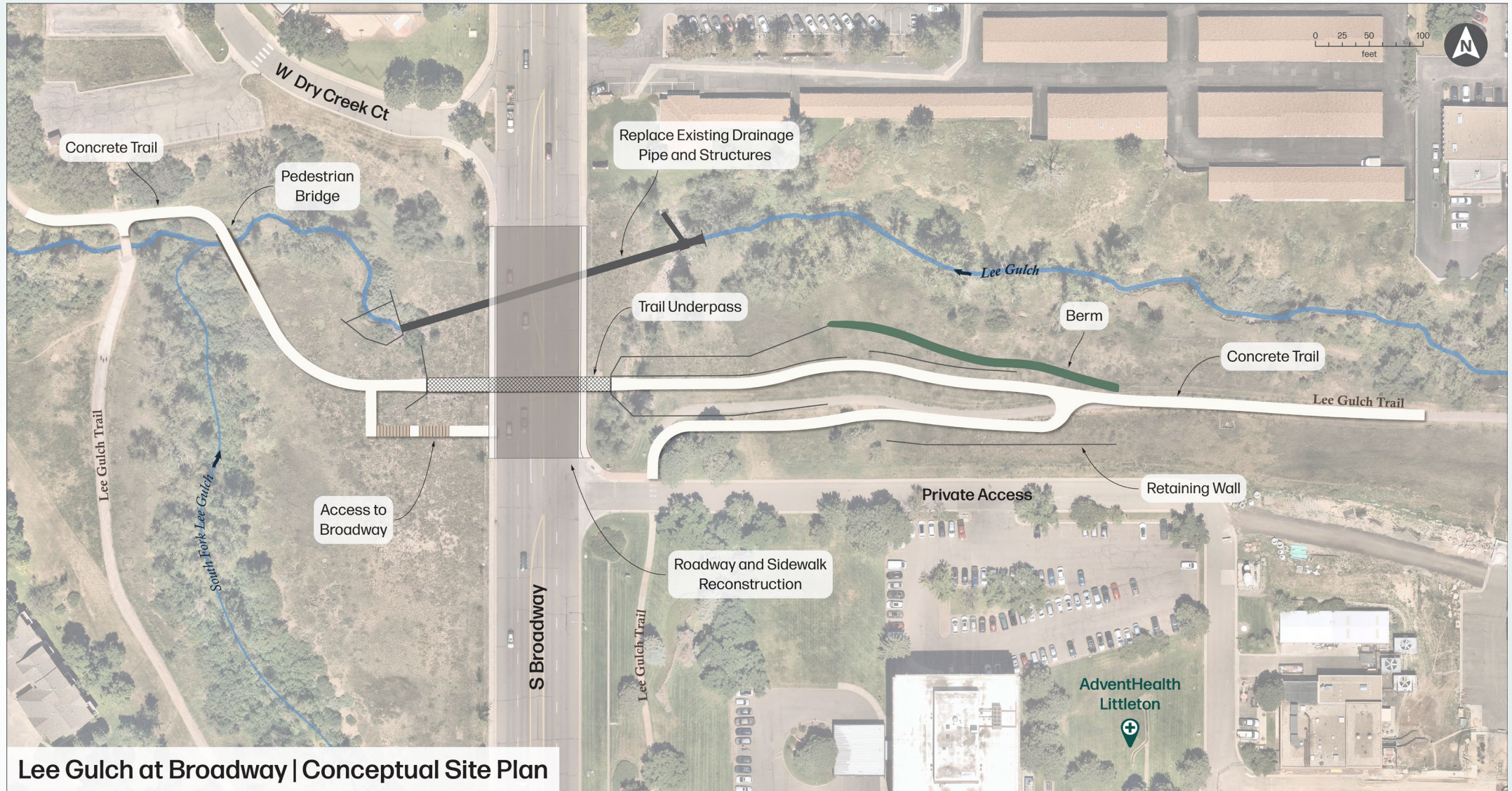
Resolution 47-2025

Resolution 48-2025

Resolution 49-2025



# QUESTIONS?



Lee Gulch at Broadway | Conceptual Site Plan