

CITY DITCH PROJECT OVERVIEW

Brent Soderlin, Director of Public Works & Utilities

Ryan Germeroth, Deputy Director of Public Works & Utilities

Stephanie Ellis, Engineer III, City of Englewood

JUNE 16, 2025



OVERVIEW

Project update by City of Englewood

Summary of Slaughterhouse Gulch Flume

Overview of Project Agreements

Upcoming Public Meetings

Questions & Discussion

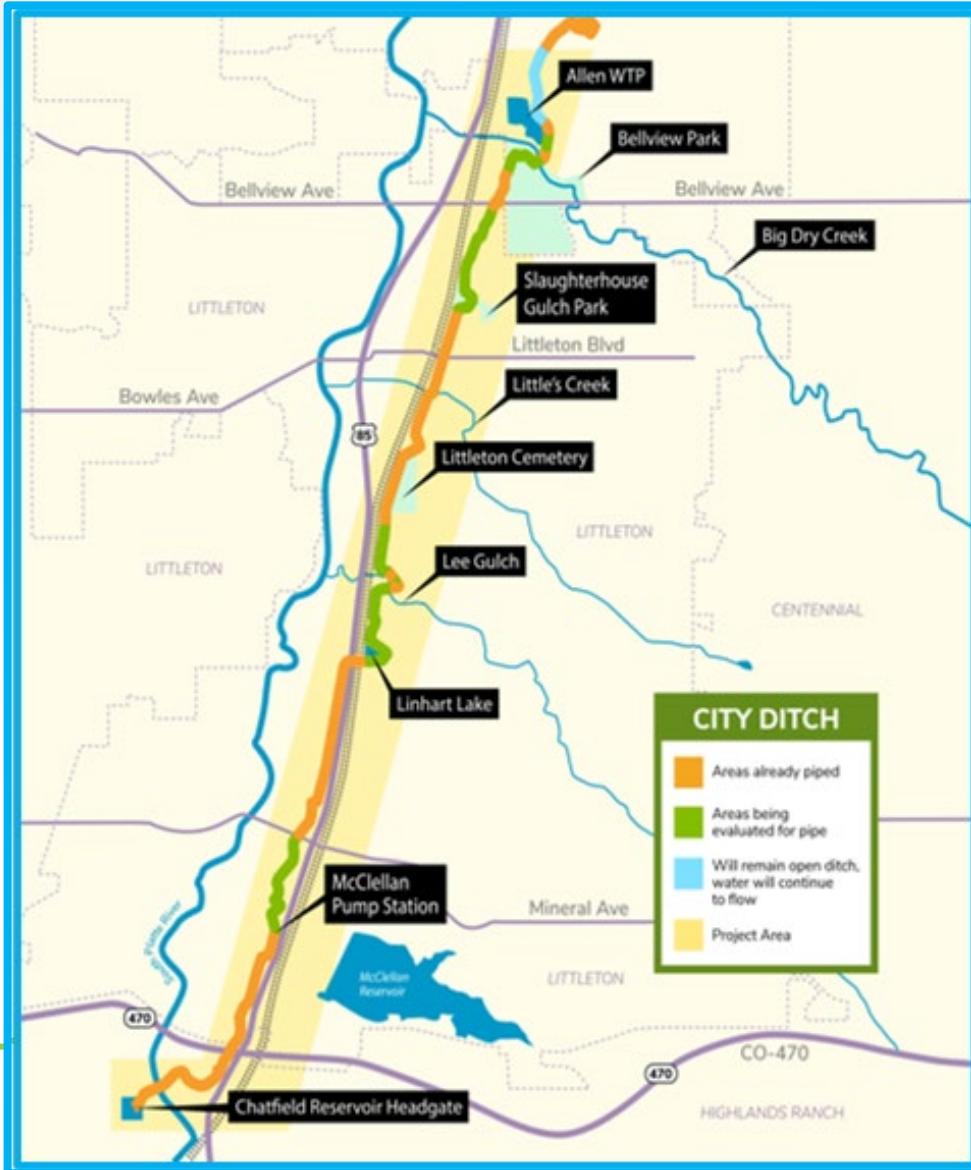
What is City Ditch?

3

- 150-year-old ditch built to provide water to Denver Metro area
- Englewood owns/operates from Chatfield Reservoir to Harvard Gulch Park
- Englewood's primary raw water conveyance system
- Delivers water to other users in Littleton, Englewood and Denver

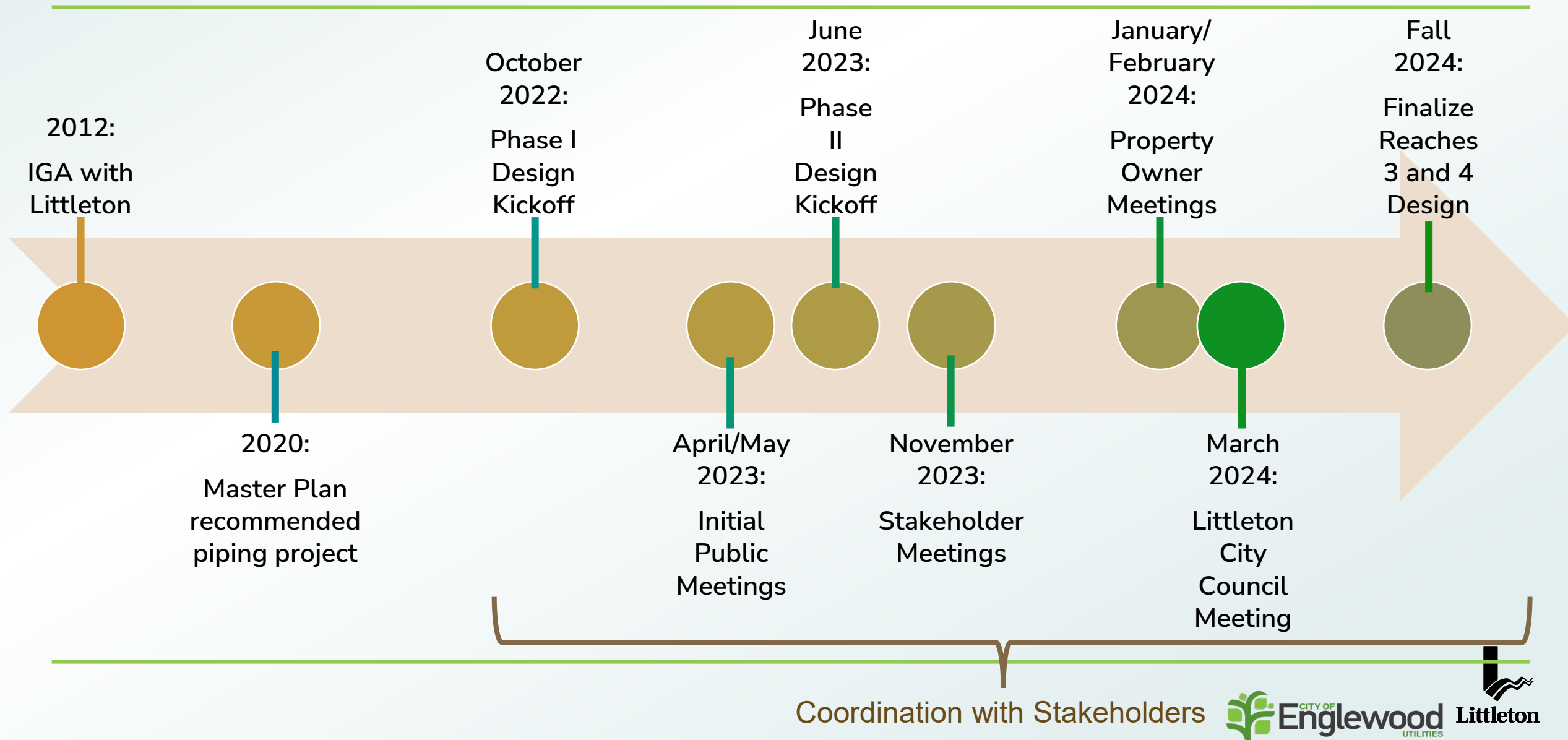


Benefits of Piping City Ditch

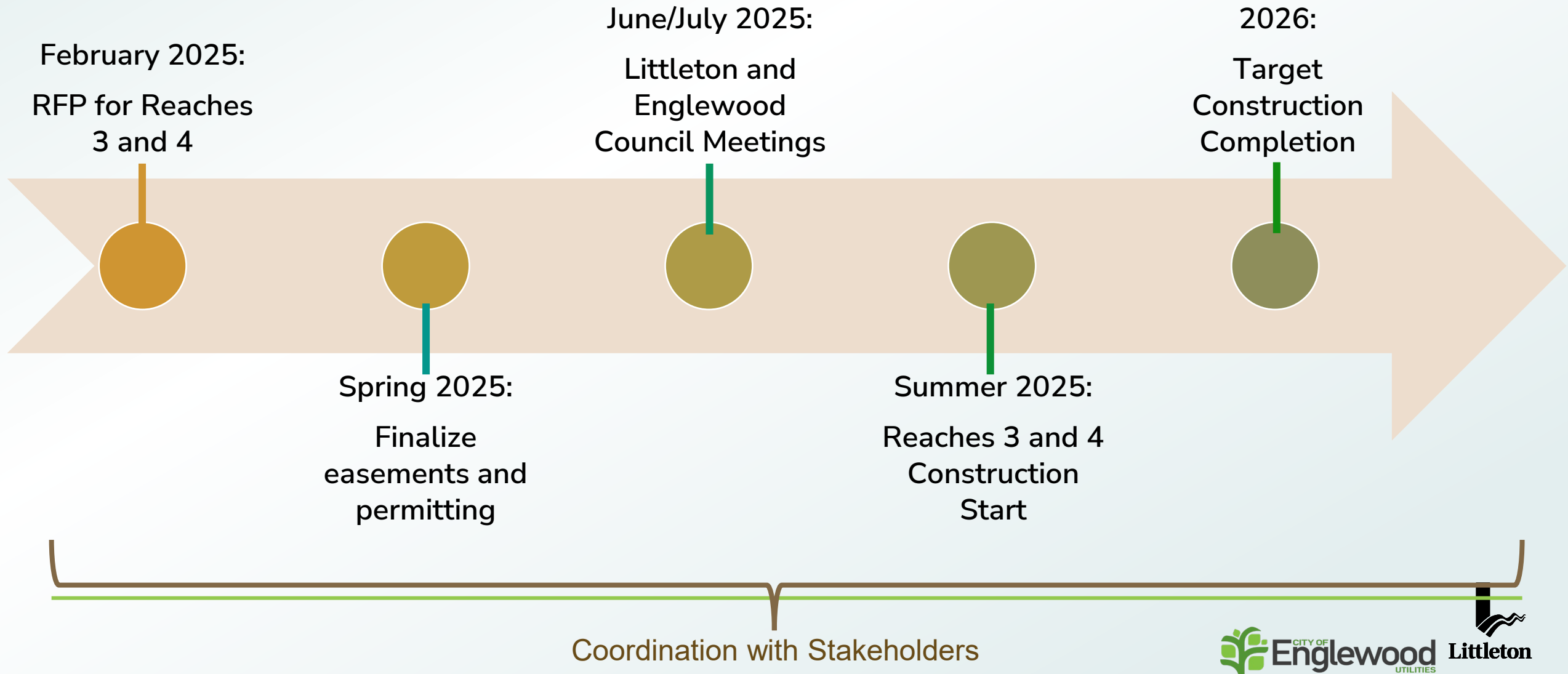


- Four stretches to be piped (~2.5 miles)
- Benefits
 - Source Water Quality and Protection
 - Chatfield Reservoir is better quality than South Platte River at Union Ave.
 - Eliminate urban stormwater runoff into ditch
 - Contamination events: train derailment
 - Sustainability
 - Resiliency
 - Safety
 - Reduced capital investment

Project Timeline



Project Timeline (Continued)



An aerial photograph of a residential and commercial area. A thick blue line highlights a path that starts near the bottom left, runs north along the eastern side of S Rio Grande St, and then turns east towards the top right. The path crosses several streets including S Prescott St, S Crocker St, S Louthan St, and S Louthan Way. Other visible streets include W Belleview Ave at the top, W Sheri Ln, W Progress Ave, W Prentice, W Crestline Dr, and W Cre. A red line segment is visible at the top right corner. A road sign for S Rio Grande St and Highway 88 is visible on the left side of the image.

Stakeholder Engagement

Englewood
Engaged
website

Public meetings

Collect public
comments

Incorporating
feedback when
feasible

City of Littleton
partnering

Historic group
meetings

South Platte
Working Group
presentation

Adjacent
property owner
meetings

Project and
construction
fact sheets

Email
communications

Littleton City
Council
Meetings

Next Steps



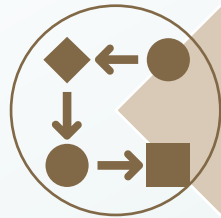
Littleton/Englewood approval of easements and agreements



Additional stakeholder communications



Reaches 3 and 4 construction



Reach 2 redesign completion, easement and agreement approvals, and construction

SUMMARY OF FLUME ASSESSMENTS



Slaughterhouse Gulch Park

Scenario		Slaughterhouse Gulch Flume		
		One time cost	Annual costs	Total 10-yr Cost
Option 1	Remove flume with Englewood project	Minimal	Minimal	Minimal
Option 2	Repair & maintain flume in place	\$303,600	\$33,600	\$639,600
Option 3a	Relocate one flume span only	\$219,200	\$2,300	\$242,200
Option 3b	Relocate truss only	\$443,000	\$7,300	\$516,000
Option 3c	Relocate truss w/ three spans	\$655,400	\$14,200	\$797,400
Option 3d	Relocate full structure w/o abutments	\$1,079,600	\$30,700	\$1,386,600

CONSIDERATIONS

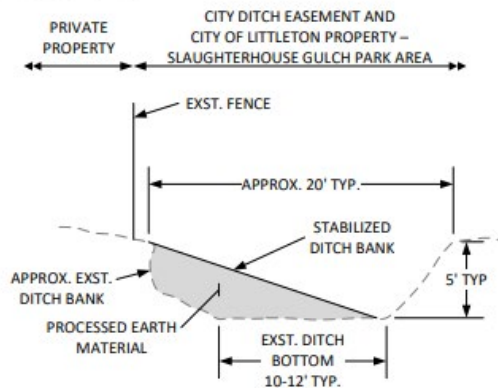
- Costs to repair and maintain in place are high
- Some limited grant funding may be available for restoration
- Concerns around safety and restoration costs if left in place
- Costs to relocate flumes are even higher
- Any relocated structure would need to be secured for safety

PROJECT AGREEMENTS

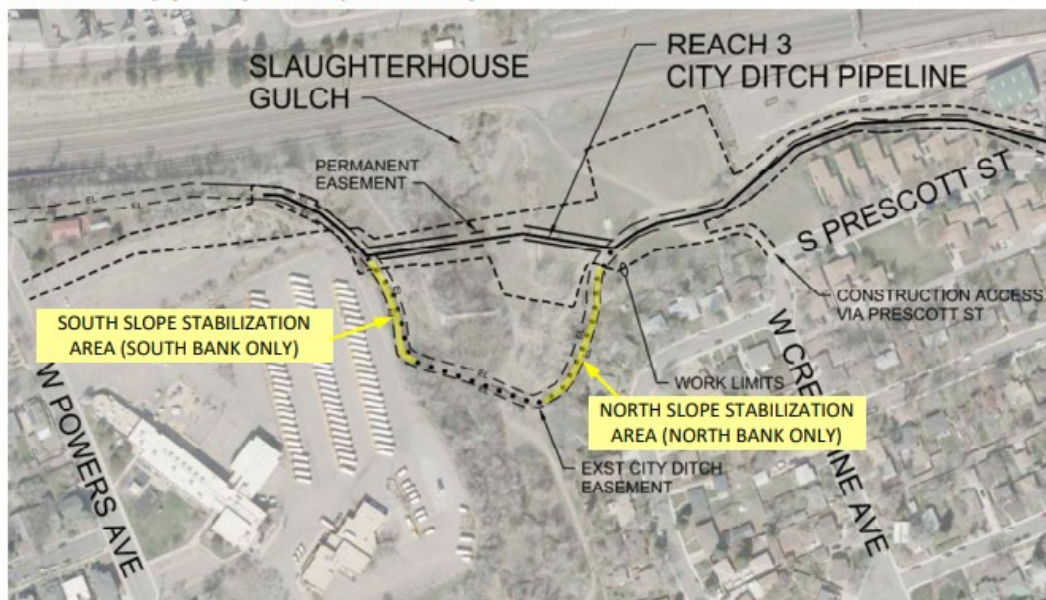
- Intergovernmental Agreement with Englewood
- Temporary Construction Easement
- Relinquishment and Grant of Permanent Easements
- Quit Claim Deed

INTERGOVERNMENTAL AGREEMENT

REPRESENTATIVE CROSS SECTION



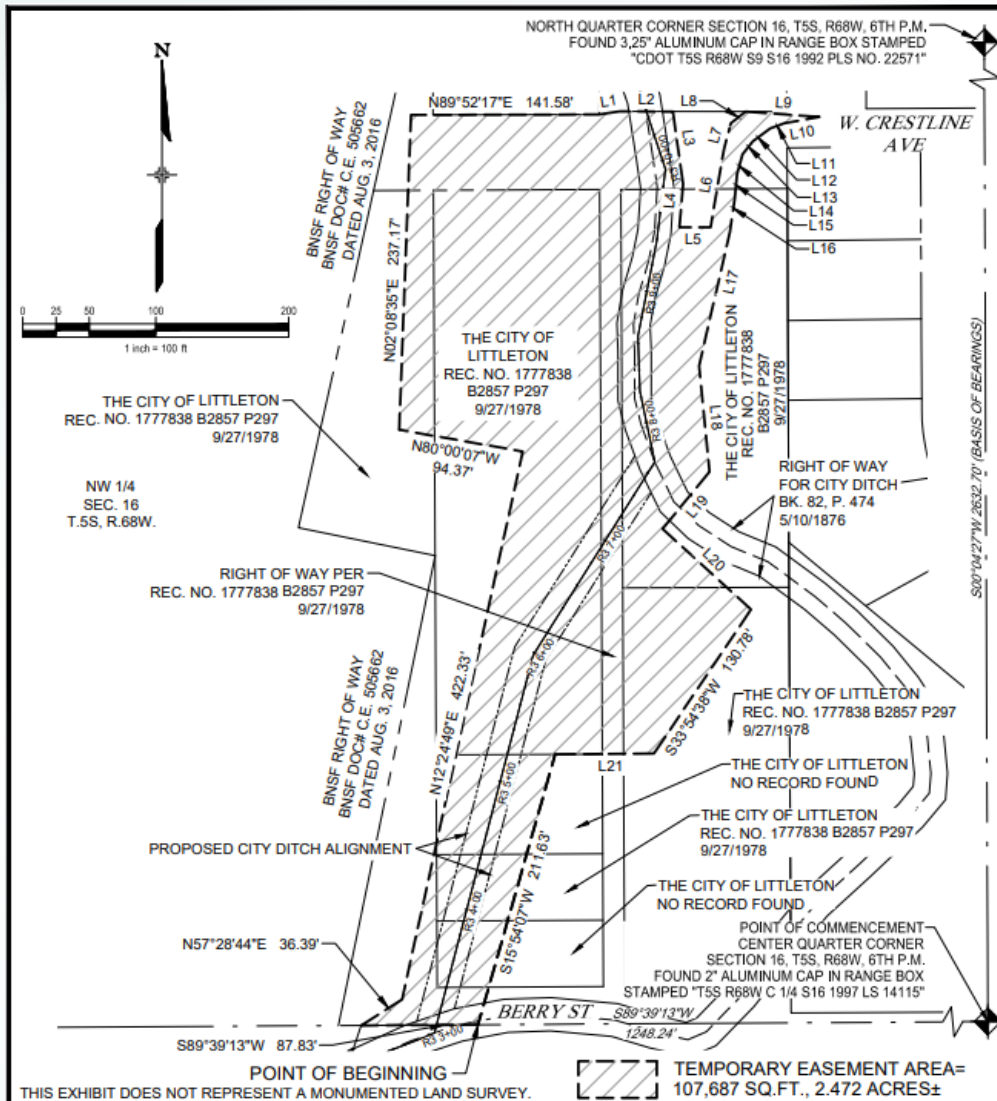
PLAN - AREAS OF DITCH BANK STABILIZATION



Slaughterhouse Gulch Park

- Effective during construction only
- Tree mitigation fee of \$216,500
- Stabilization of ditch bank
- Preserve section of flume & remove the remaining structure

TEMPORARY CONSTRUCTION EASEMENT



Slaughterhouse Gulch Park

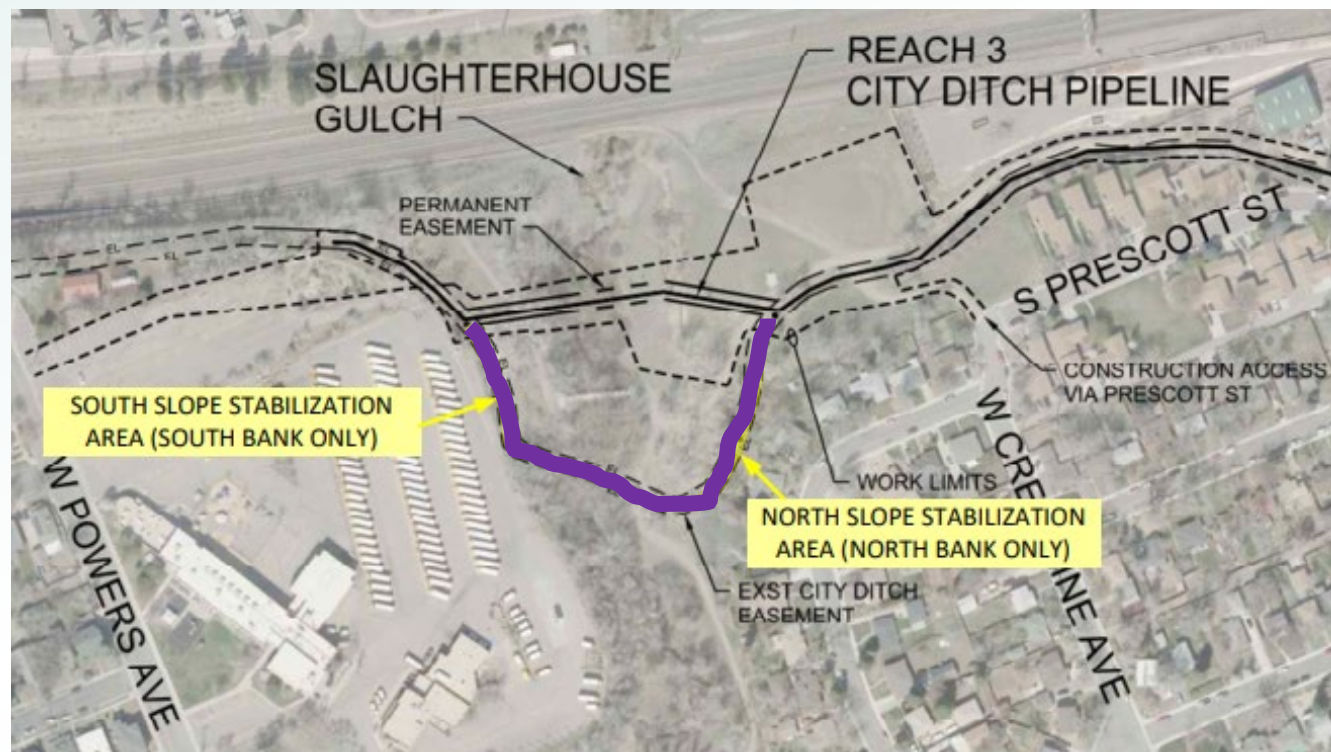
- Effective during construction only
- Grants access permission
- Grants permission for staging
- Insurance requirements
- Surface restoration requirements



QUIT CLAIM DEED

Slaughterhouse Gulch Park

- Records easement relinquishment
- Englewood releases all responsibilities of area to Littleton



UPCOMING MILESTONES

- July 15th: Agreement resolutions planned for Council
- Summer 2025: Construction starts on project
- Late Fall 2025 / Early Winter 2026: Flume structure removal and preservation of piece

COMMEMORATING DITCH

- Where to commemorate the piece of the flume?
- How to commemorate the abandoned ditch and flume piece?
- Coordination between Historic Littleton, Inc., Historic Preservation Commission, and City Staff will be needed