

SELECT CAPITAL PROJECT OVERVIEW - 2025

Kimberly Dall, Assistant City Engineer
Brent Soderlin, Public Works &
Utilities Director

APRIL 15, 2025



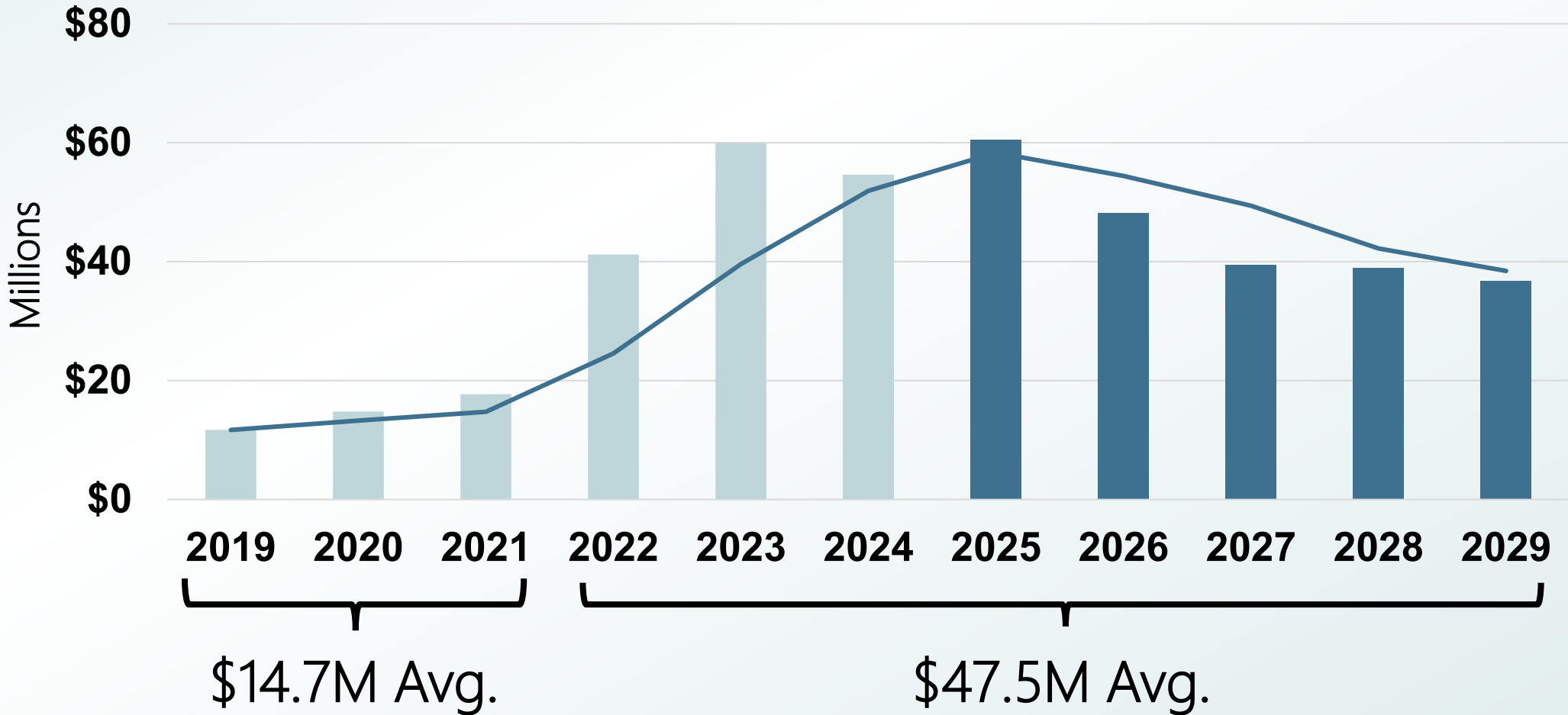
CAPITAL CATEGORIES



CAPITAL CATEGORIES

Transportation
Pavement Management
Capital
Bridges Traffic Trails

CAPITAL INVESTMENT TREND



CAPITAL COORDINATION

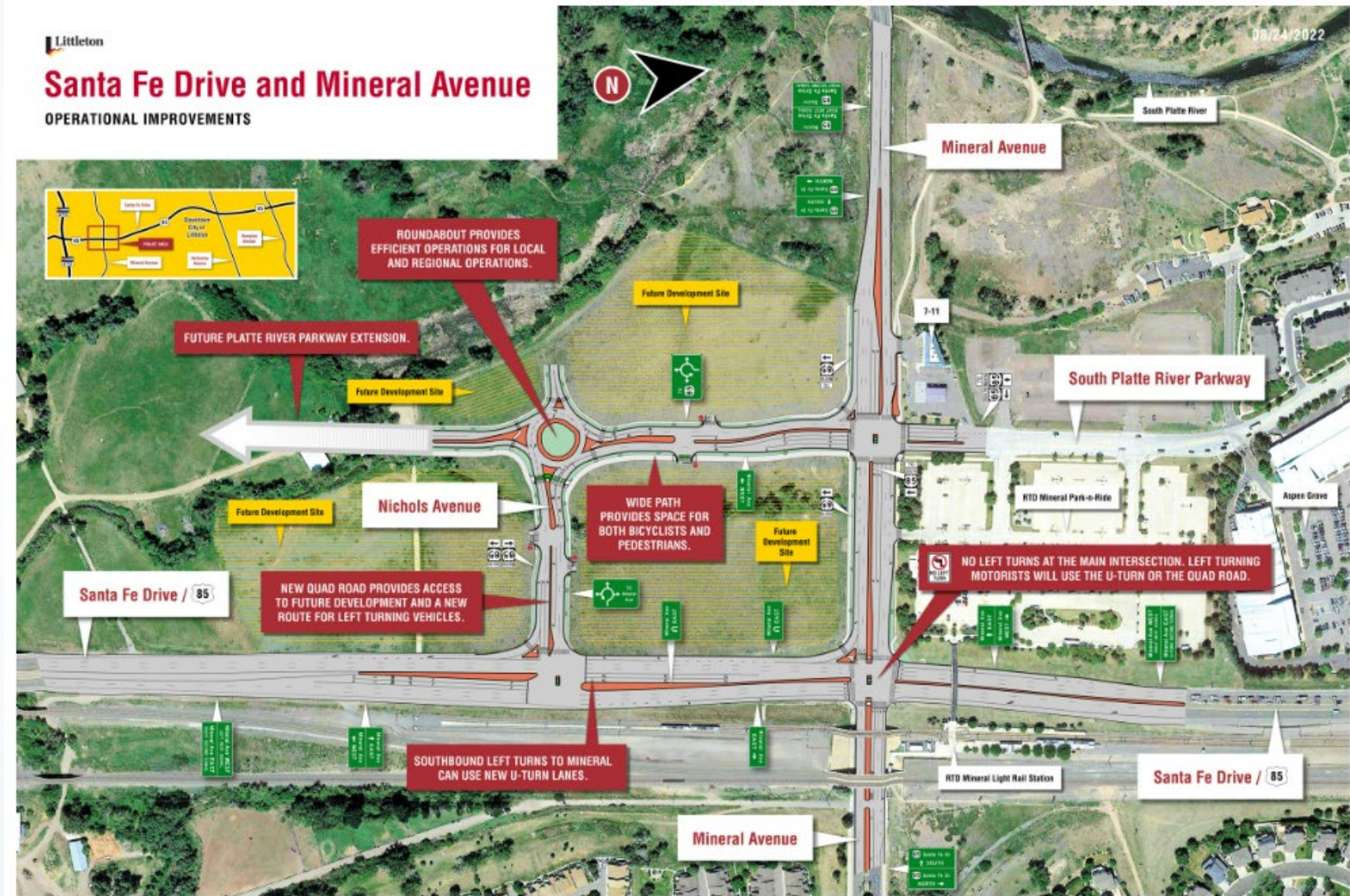


2025 PROJECTS

Santa Fe and Mineral
Quadrant Road

New Quadrant Roadway

Safety, Congestion,
Multimodal



2025 PROJECTS

Nevada
Pedestrian
Bridge
Replacement

New Bridge

Safety,
Multimodal



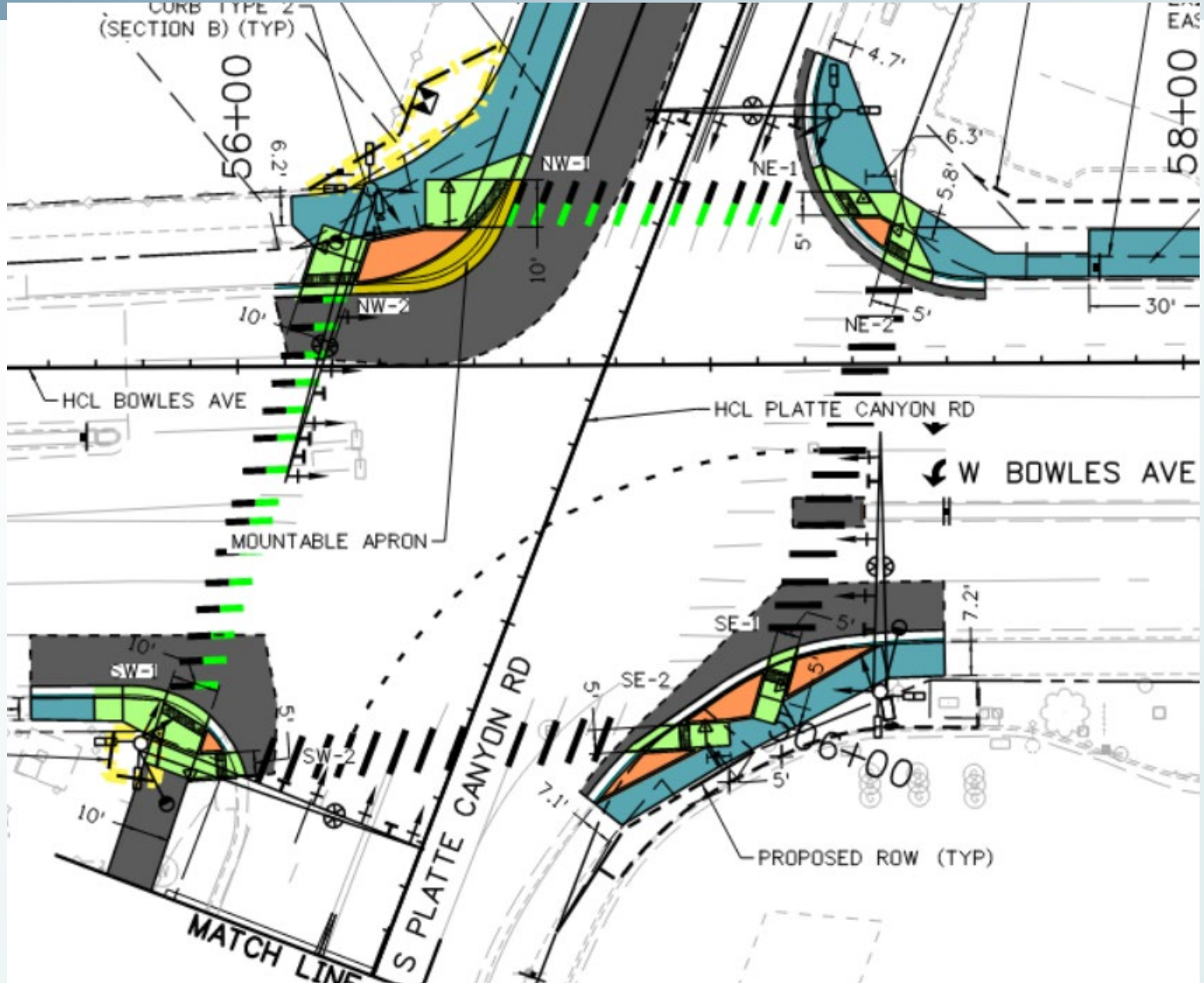
2025 PROJECTS

Platte Canyon & Bowles Avenue

Platte Canyon & Mineral Avenue

Lane, Curb, and Signal Improvements

Safety, Multimodal, Congestion



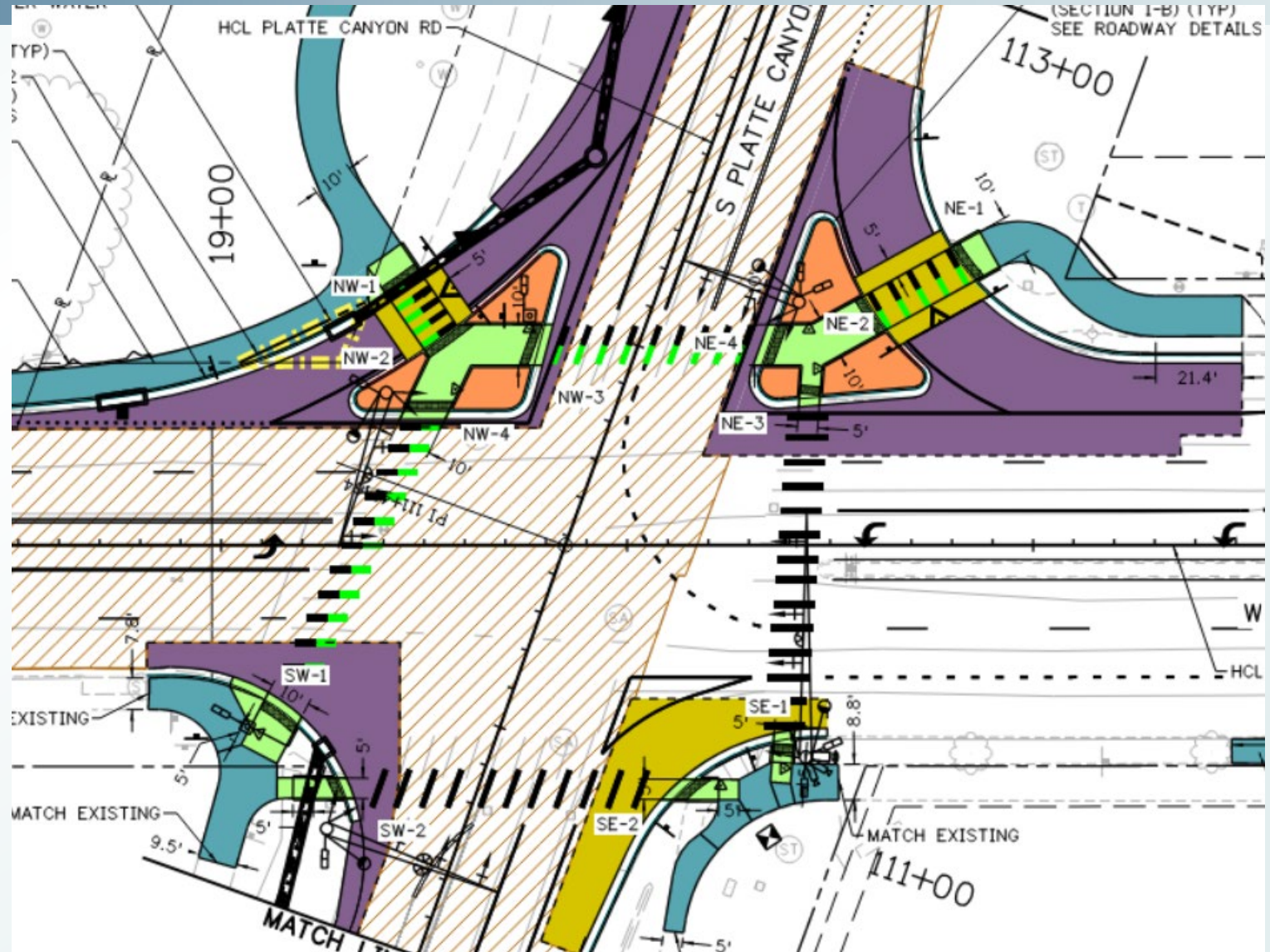
2025 PROJECTS

Platte Canyon & Bowles Avenue

Platte Canyon & Mineral Avenue

Lane, Trail, Curb, and Signal Improvements

Safety, Multimodal, Congestion



2025 PROJECTS

Mineral Mobility
East Phase 1

Bike Lane Upgrades,
Trail Paving

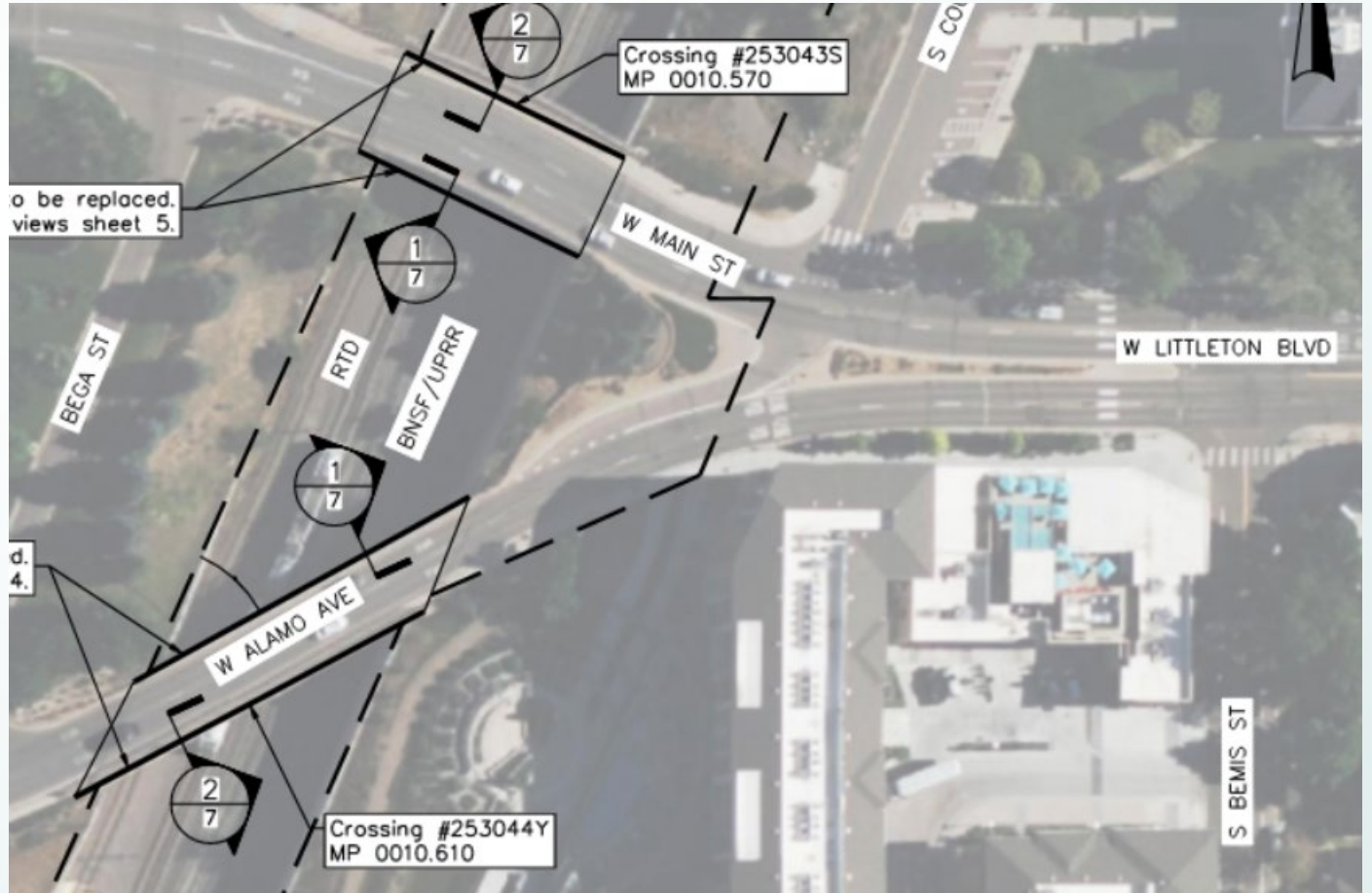
Multimodal, Safety,
Complete Network



2025 PROJECTS

Main Street,
Alamo Avenue, &
Prince Street
Bridge Fence Reconstruction

Safety

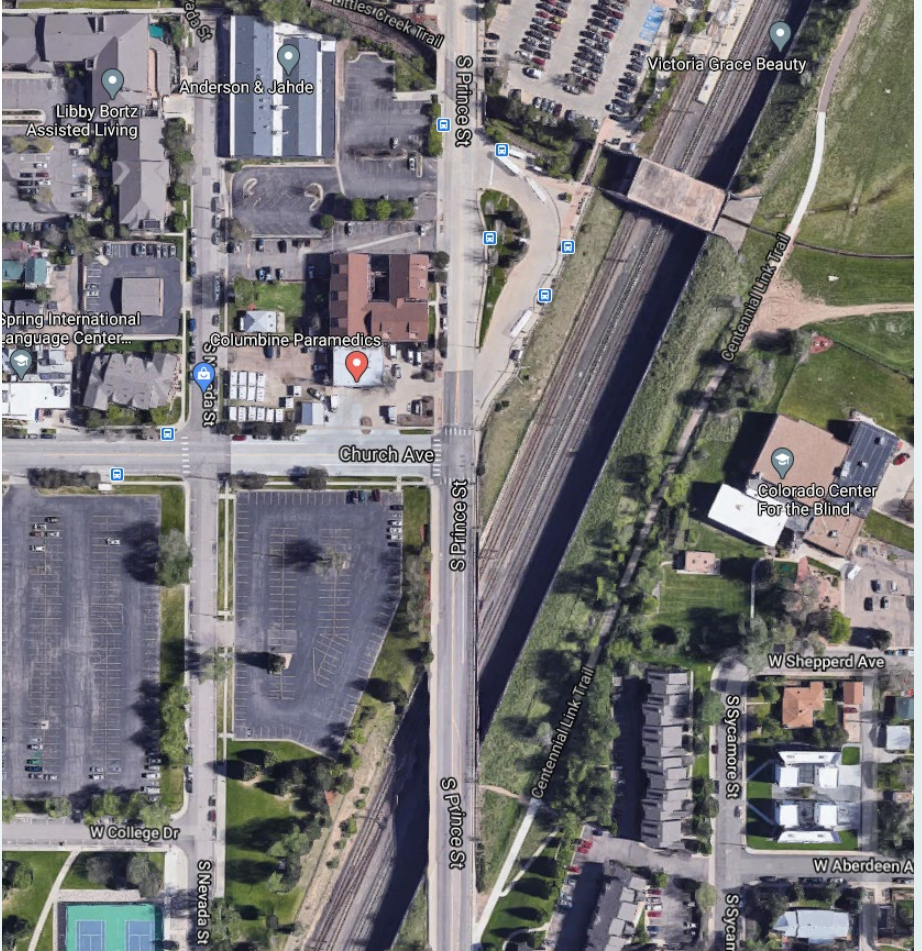
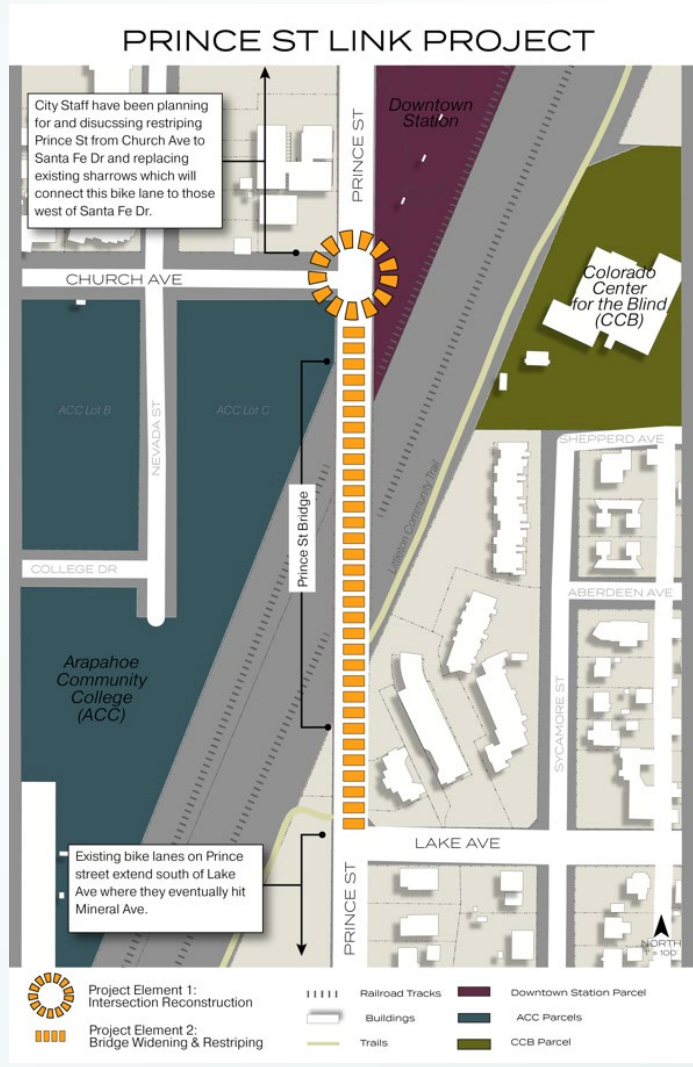


2025 PROJECTS

Church Avenue & Prince Street

Sidewalk, Crossing, Bike Lane Improvements

Safety, Multimodal, Complete Network



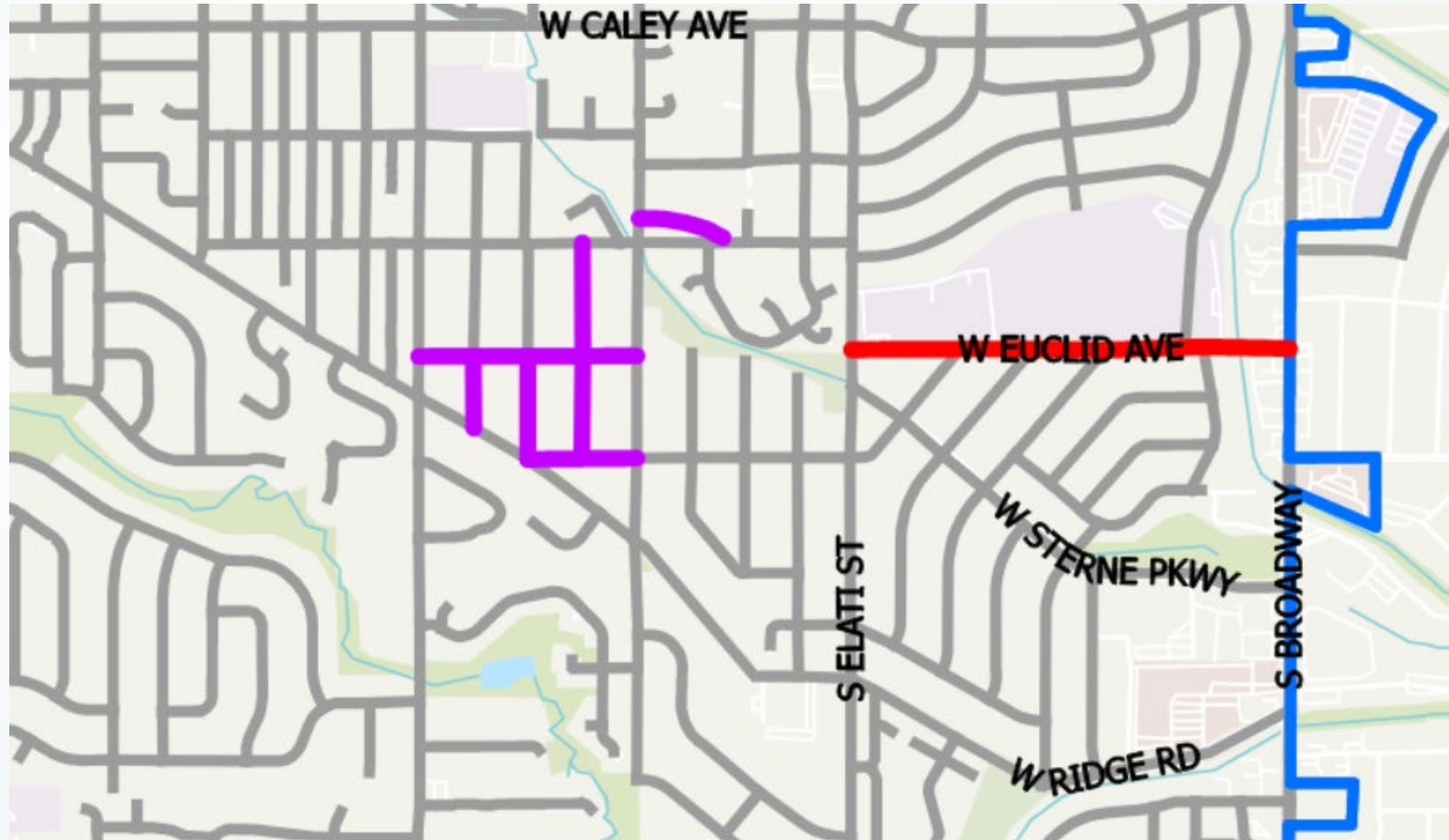
2025 PROJECTS

Euclid Avenue
Reconstruction

Purple:
Road Reconstruction,
Sidewalk Improvements

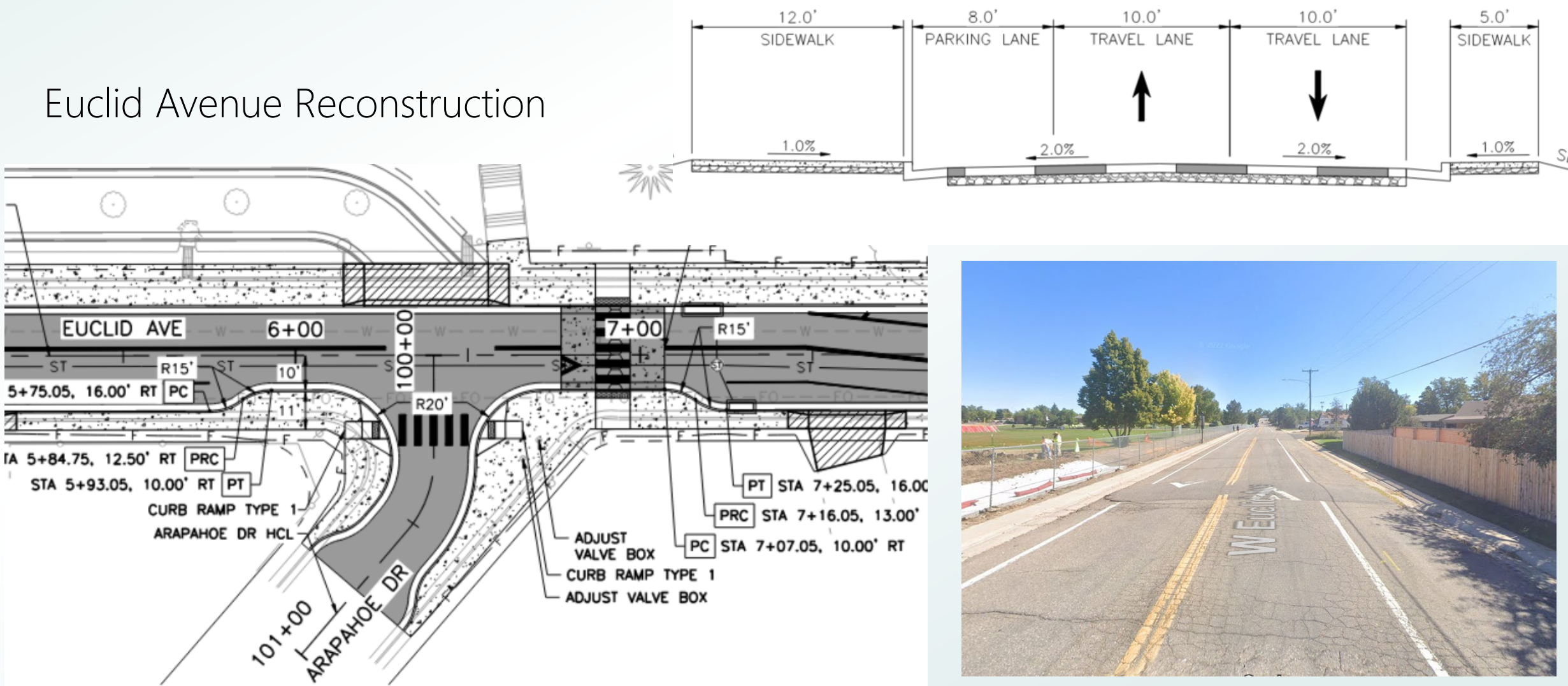
Red:
Road Resurfacing, Sidewalk
and Crossing Improvements

Safety, Multimodal,
Complete Network



2025 PROJECTS

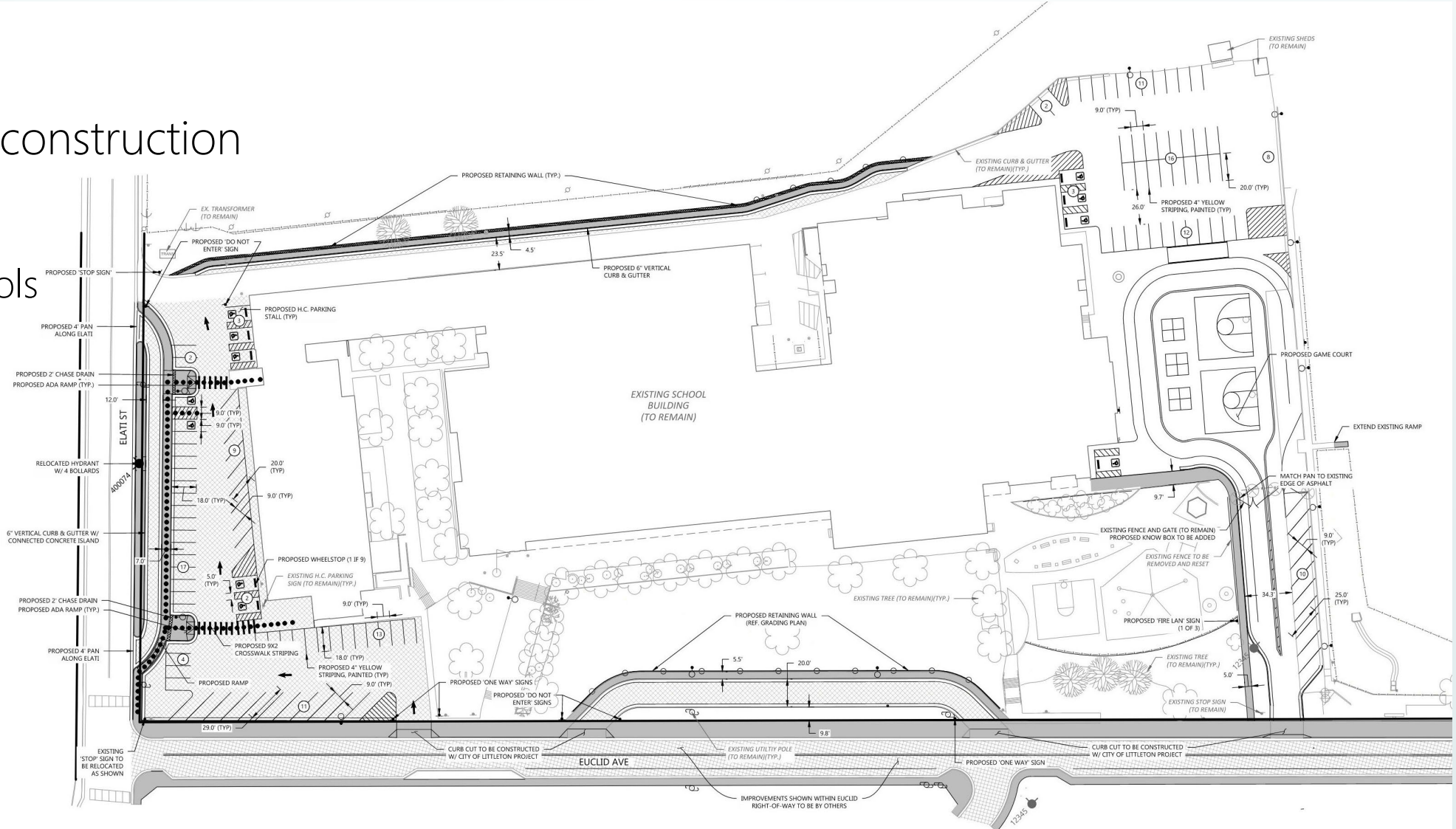
Euclid Avenue Reconstruction



2025 PROJECTS

Euclid Avenue Reconstruction

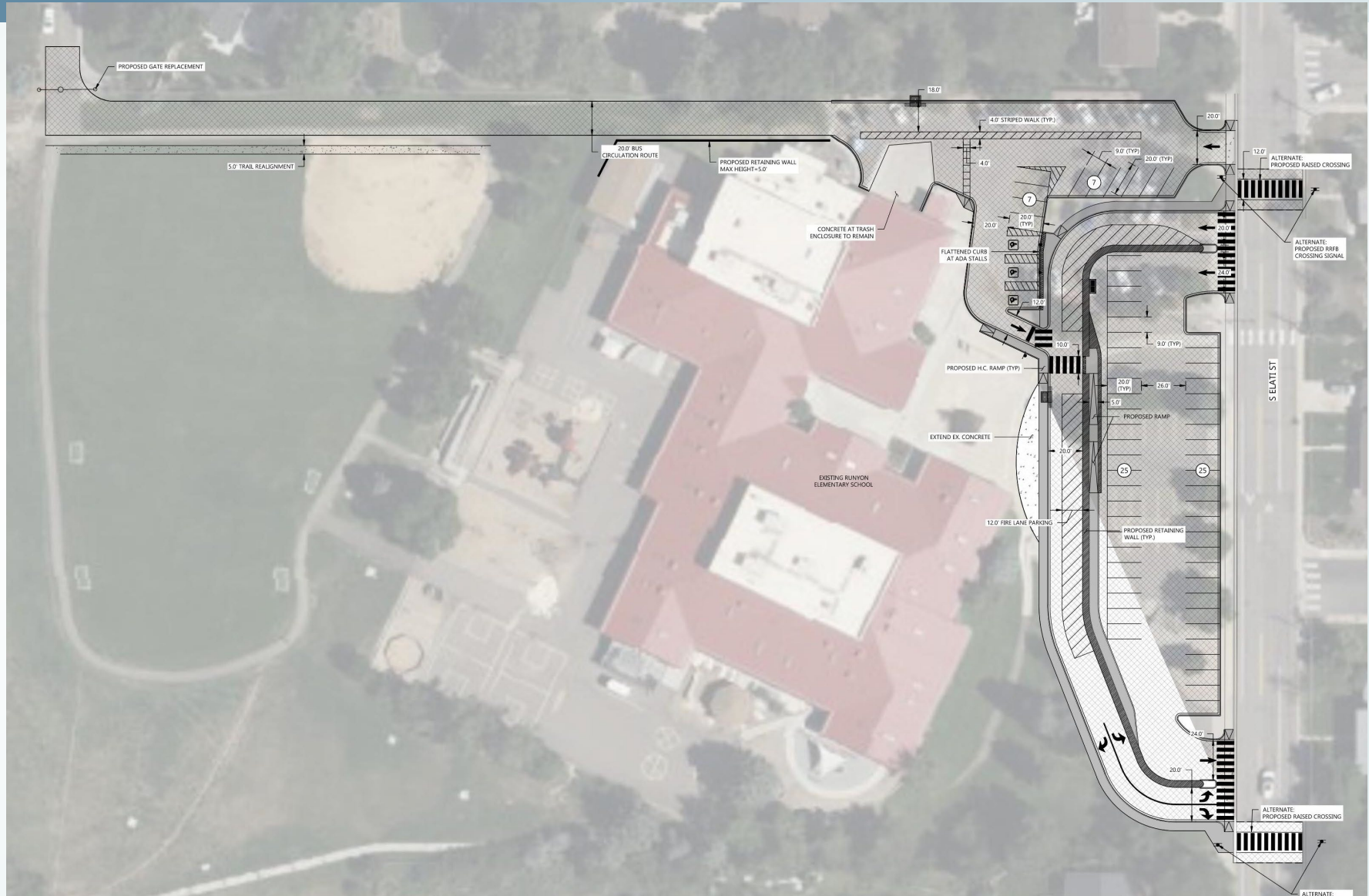
Coordination with Littleton Public Schools On LPS project



2025 PROJECTS

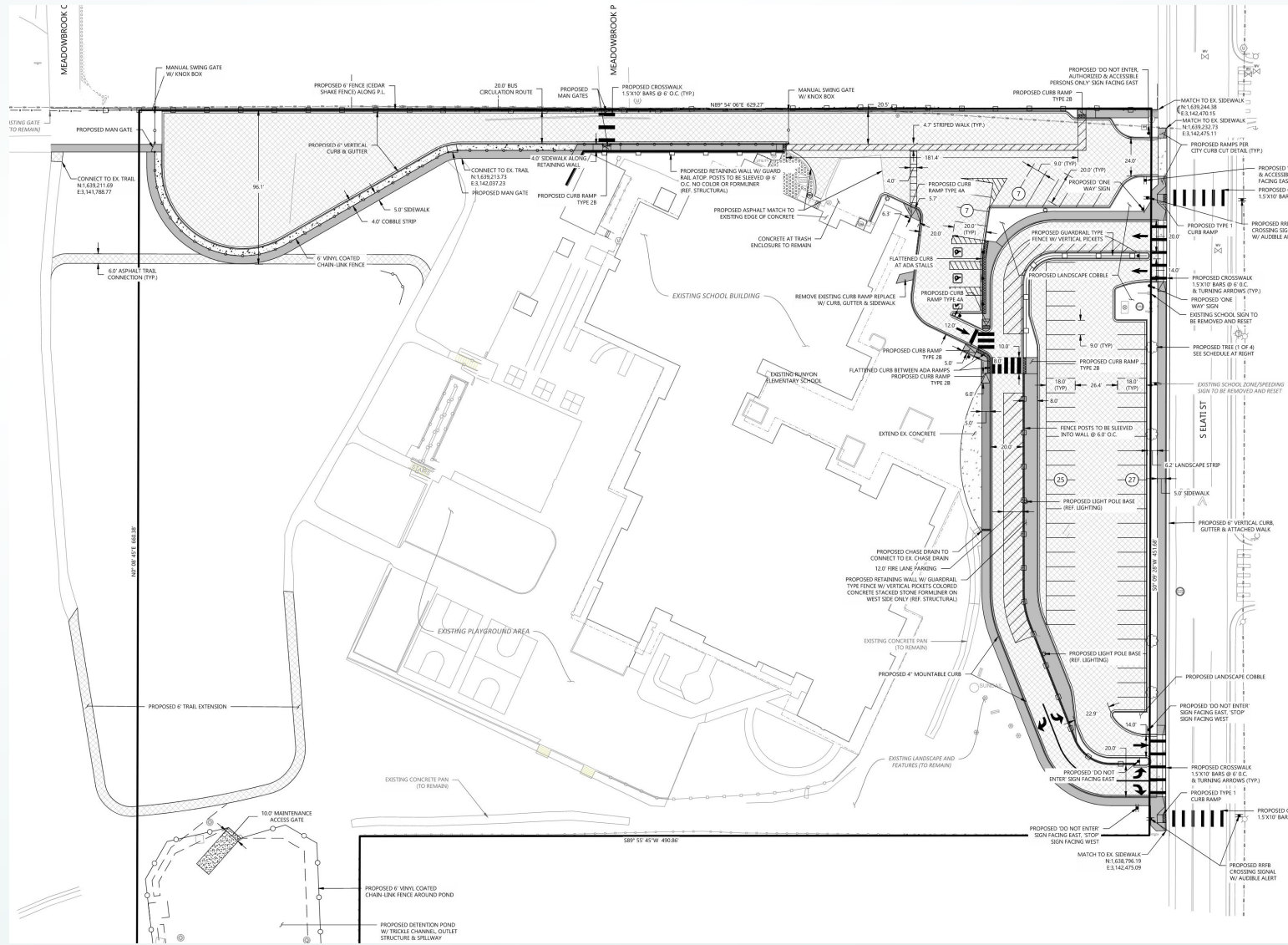
Runyon Elementary Circulation

Coordination with Littleton Public Schools on LPS project



2025 PROJECTS

Runyon
Elementary
Circulation
Coordination



2025 PROJECTS

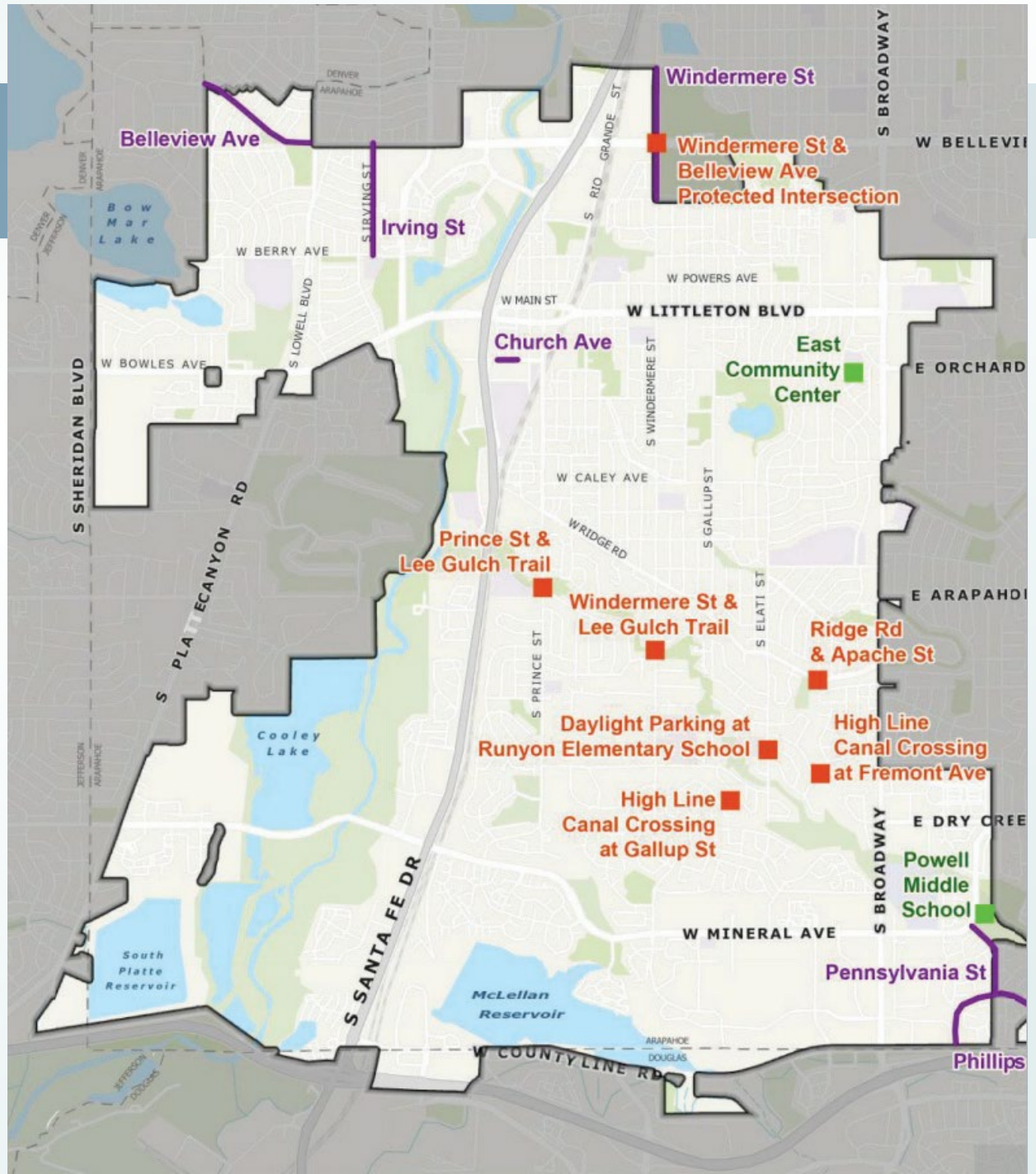
Safer Streets

Crossing & Intersection Improvements (5)

Corridor Improvements: Irving St, Church Ave

Safer Streets Practice Parks: East Community Center, Powell Middle School

Reevaluation of existing pilots



2025 PROJECTS

Safer Streets



Conventional Bike Lanes



Buffered Bike Lanes

2025 PROJECTS

Safer Streets



Protected Bike Lanes



2025 PROJECTS

Safer Streets

Belleview Ave

City Limits to
Lowell Blvd (1/2 mile)



Example of "Orcas"

Phillips Ave

County Line Rd to
Clarkson St (1 mile)



Example of "Zebras" and
delineators

Pennsylvania St

Mineral Ave to
Phillips Ave (1/3 mile)



Example of rubber parking
stops and delineators

Windermere St

City Limits to
Belleview Ave (1/2 mile)



Example of "Shur-Curb"

Church Ave

Rapp St to
Nevada St (1/8 mile)

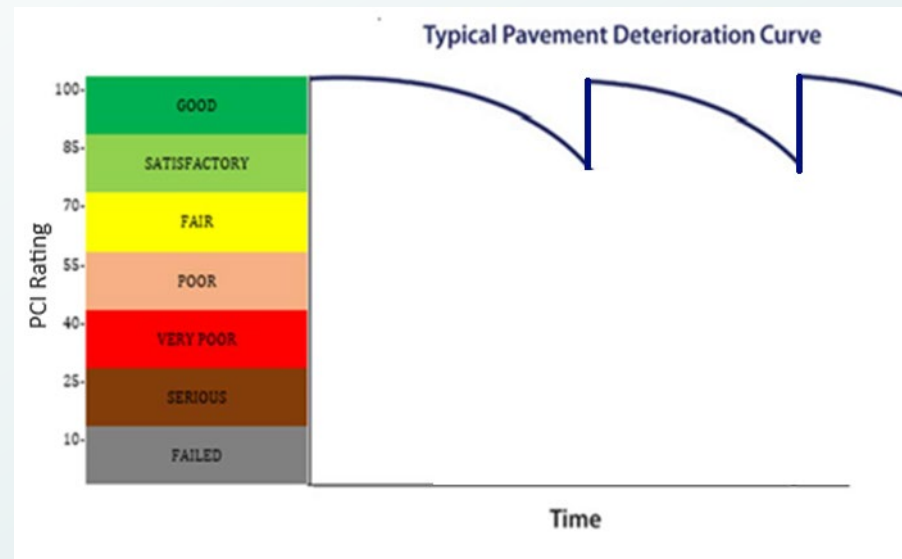
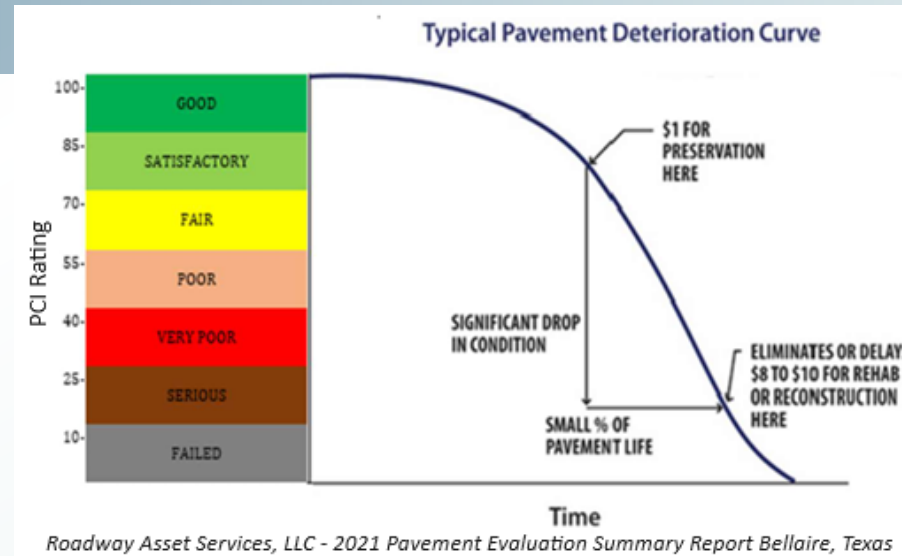


Example of Safe-T Lane
Divider

2025 PROJECTS

Pavement Preservation

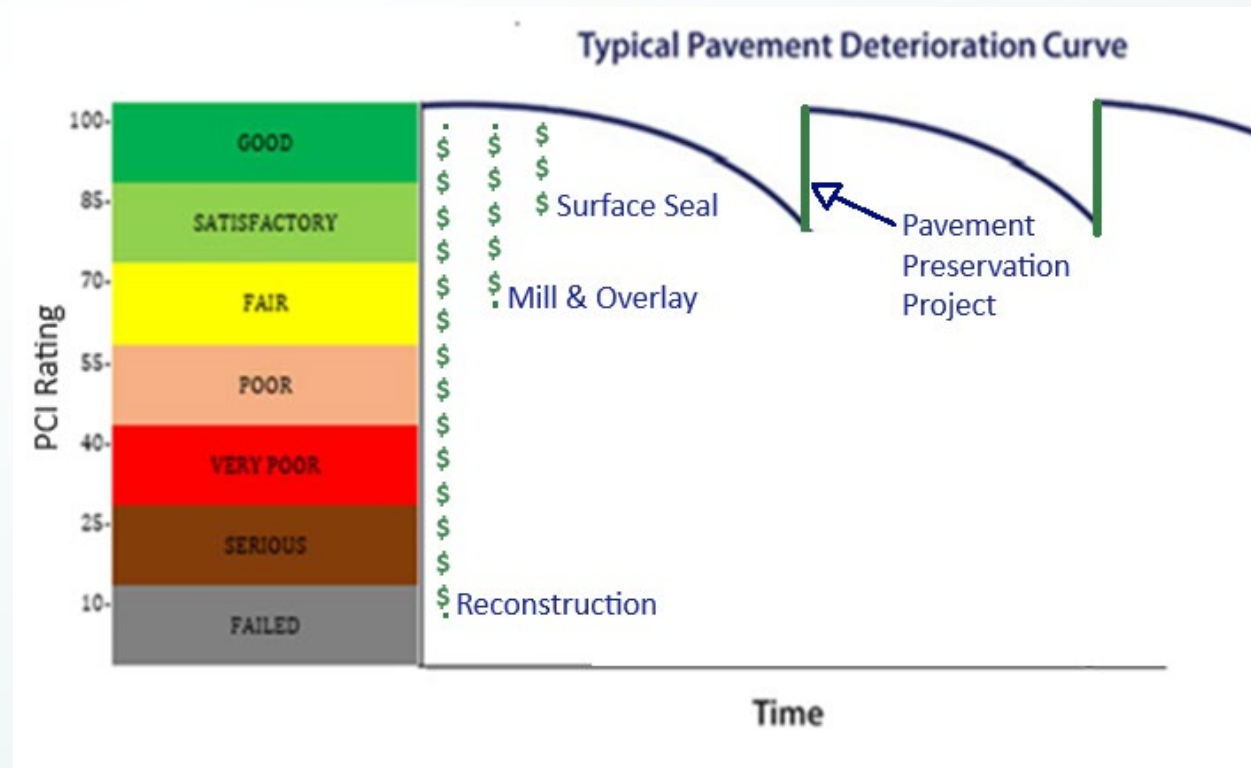
- 360 Lane Miles
- Pavement Condition
- Pavement Preservation Program



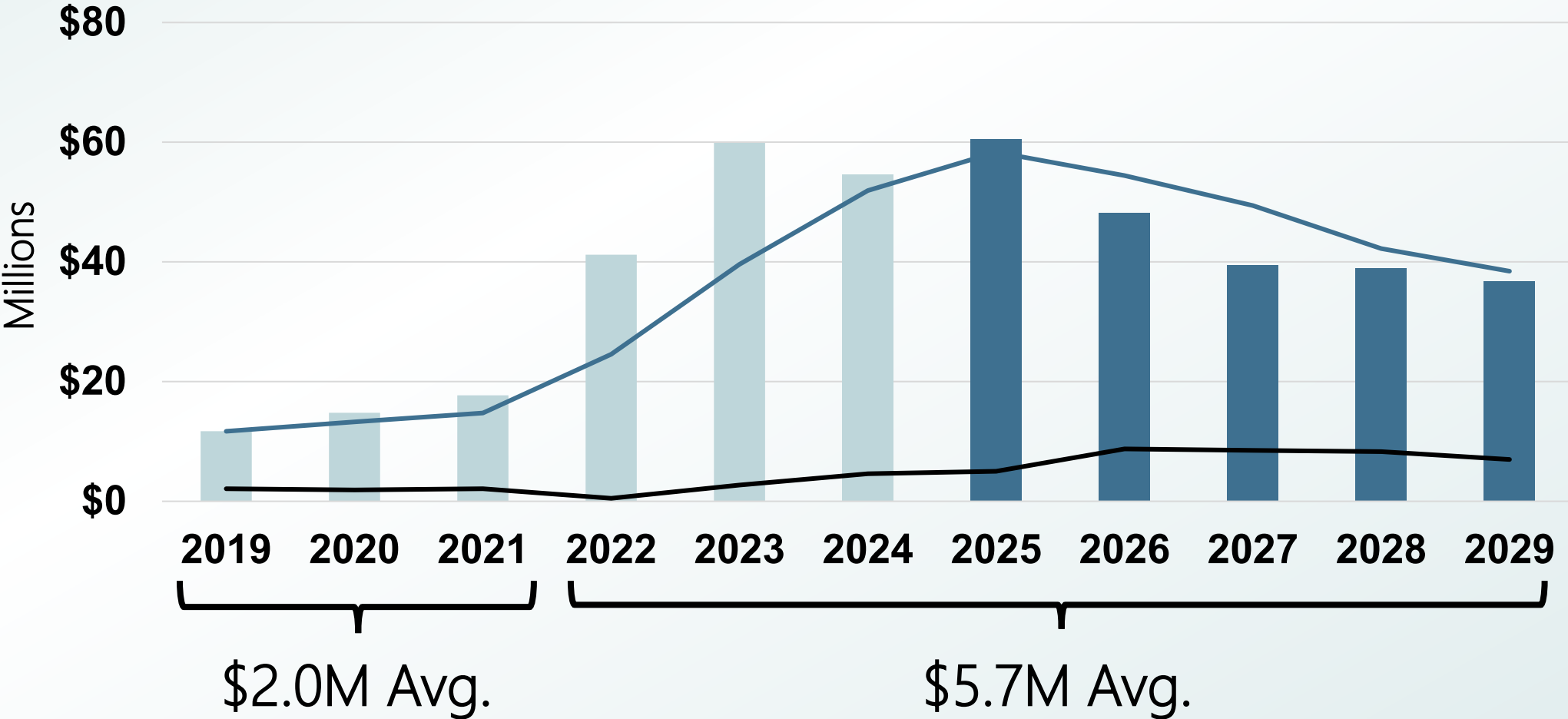
2025 PROJECTS

Pavement Preservation

- 360 Lane Miles
- Pavement Condition
- Pavement Preservation Program



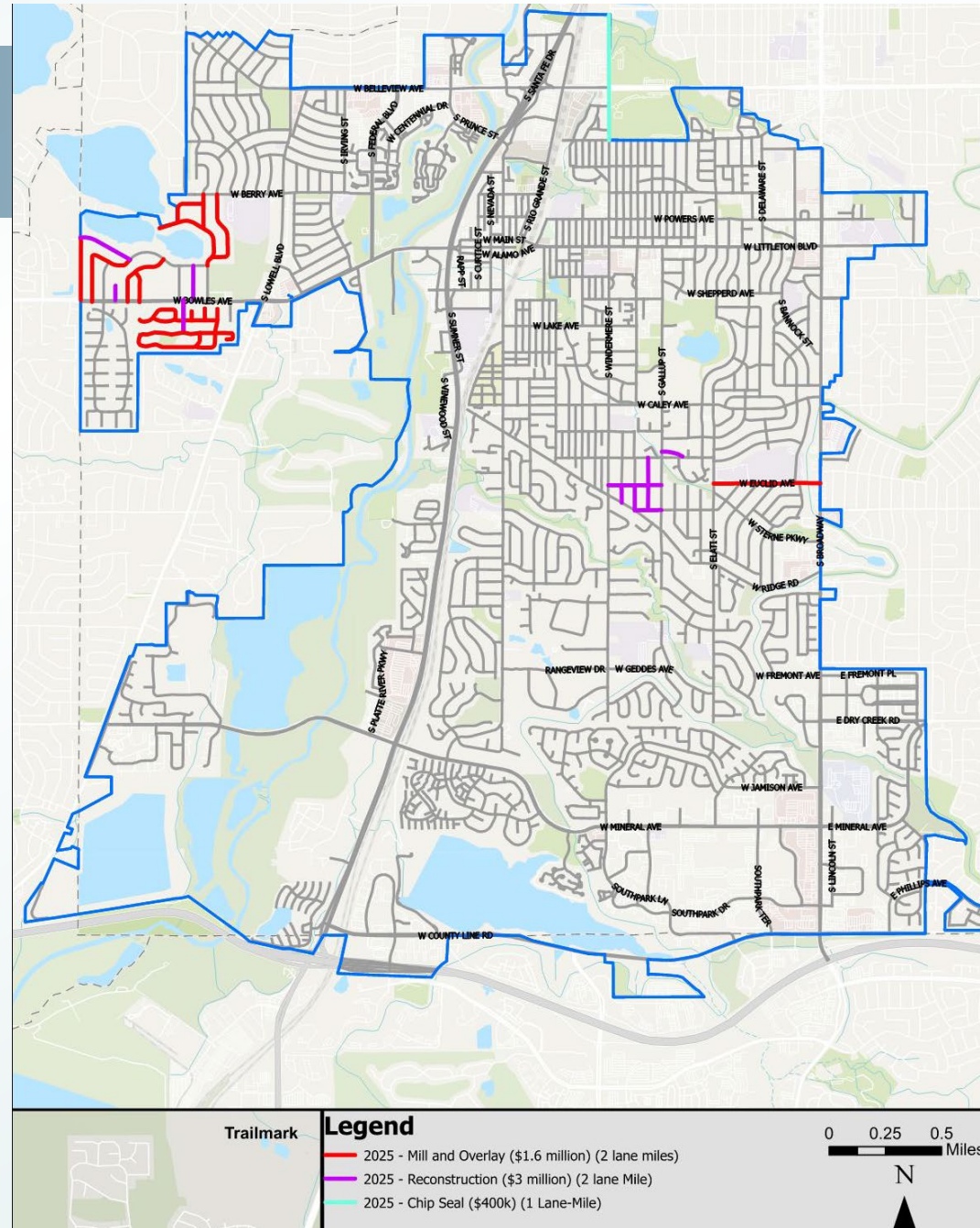
CAPITAL INVESTMENT TREND – PAVEMENT MGMT



2025 PROJECTS

Pavement Preservation

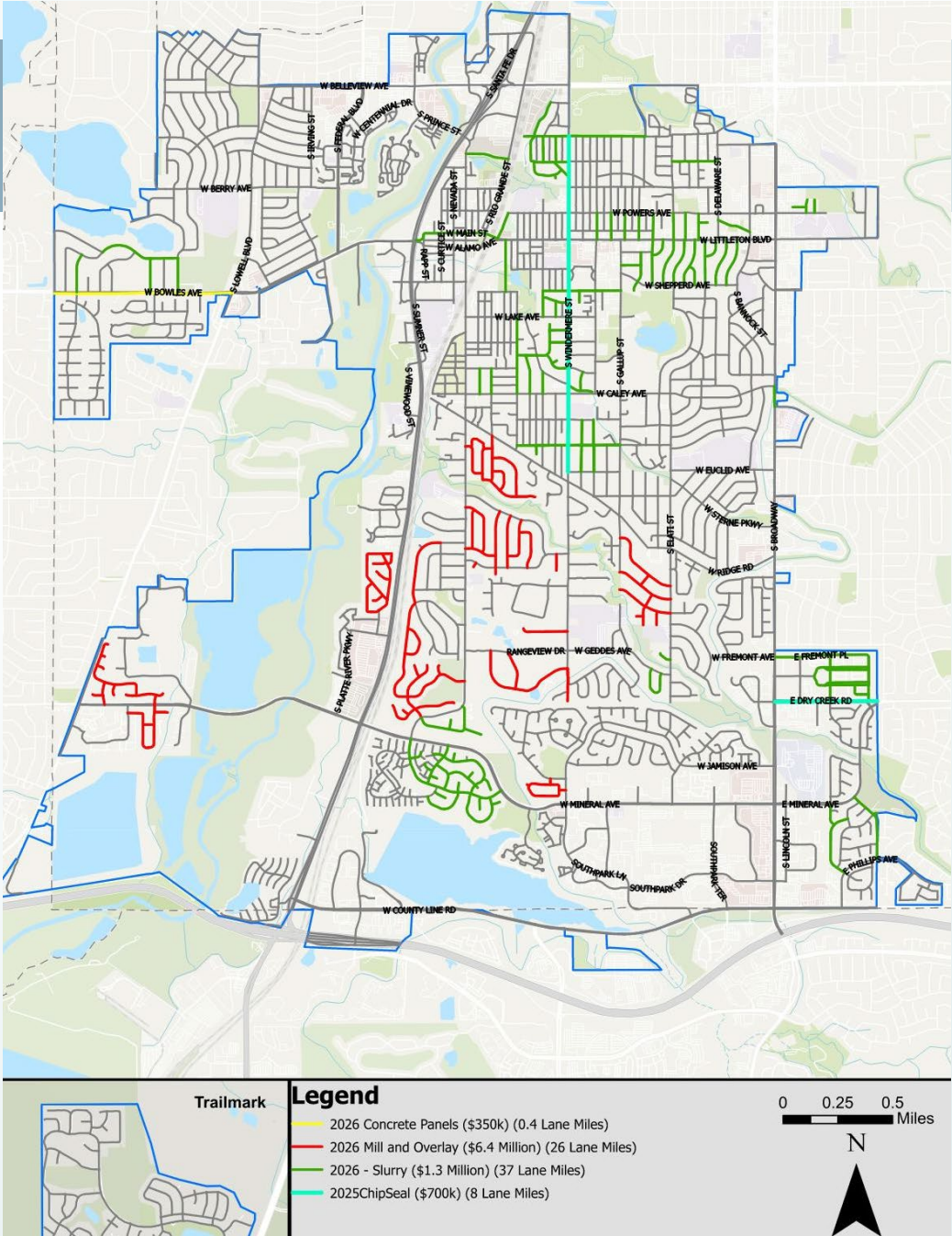
2025



2025 PROJECTS

Pavement Preservation

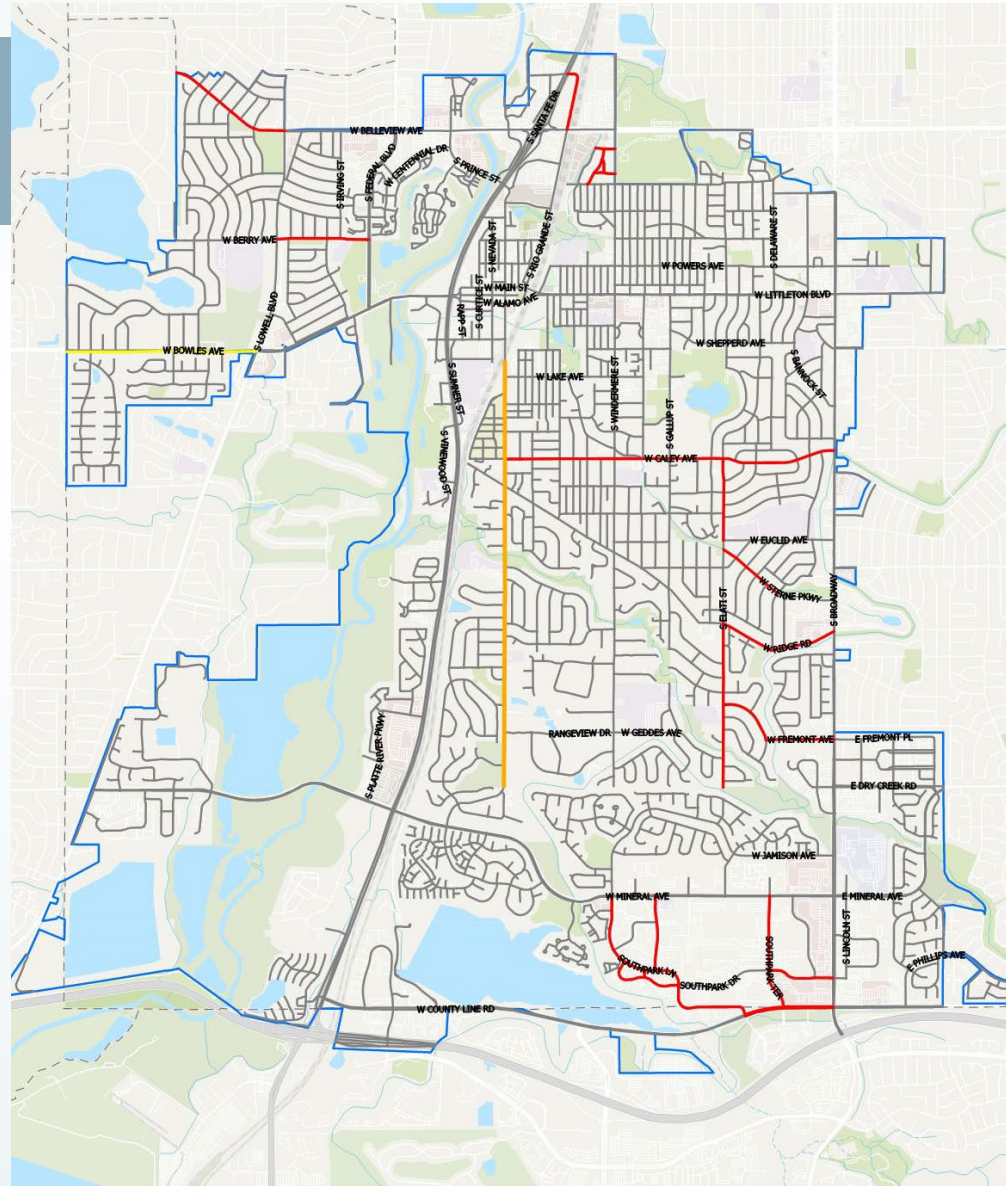
2026



2025 PROJECTS

Pavement Preservation

2027

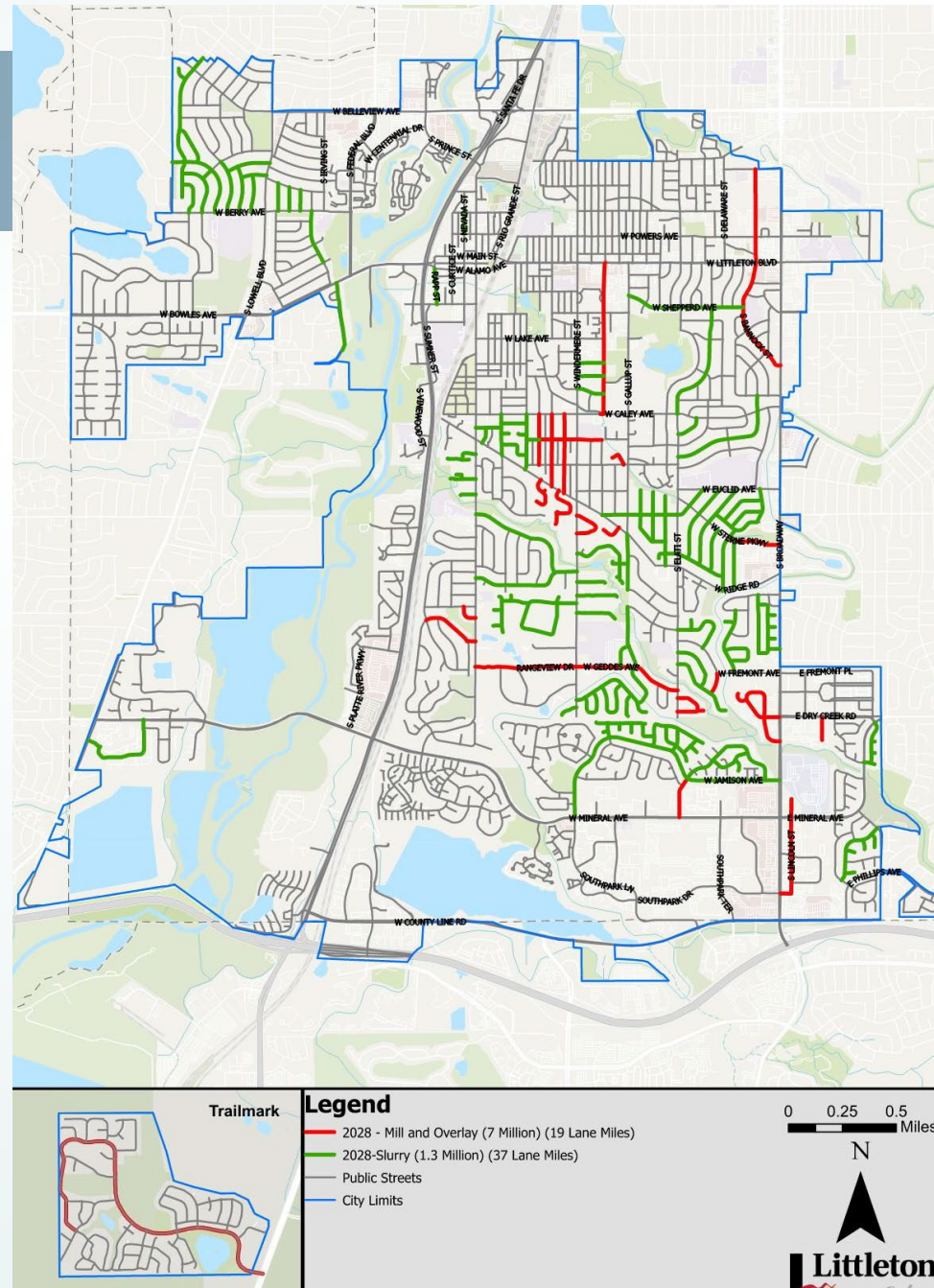


	Trailmark	Legend <ul style="list-style-type: none"> 2027 Concrete Panels (\$300k) (0.4 Lane Miles) 2027-Mill and Overlay (\$7 Million) (19 Lane Miles) 2027 Hot In Place Recycling (\$1.2 Million) (4 Lane Miles) 	

2025 PROJECTS

Pavement Preservation

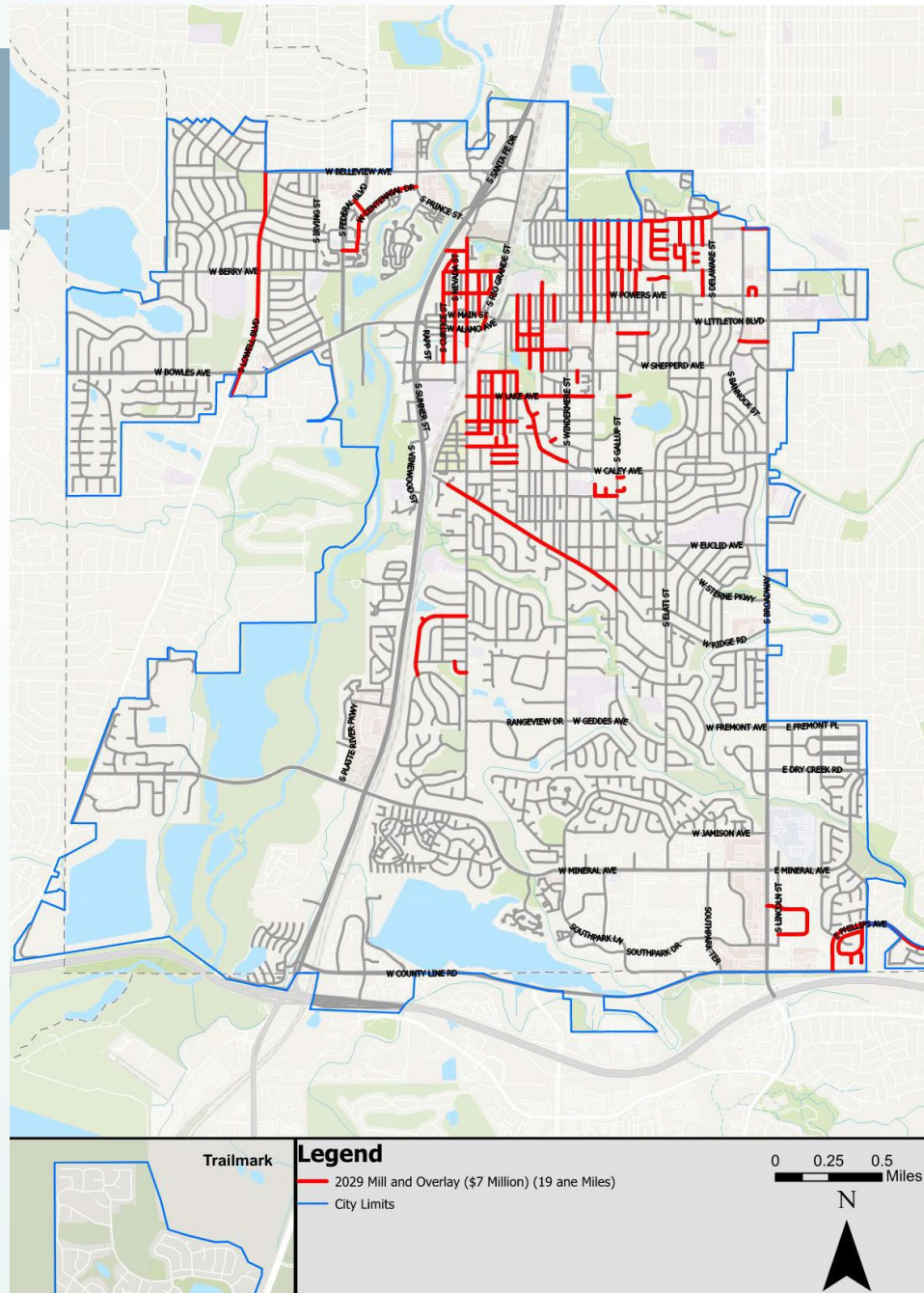
2028



2025 PROJECTS

Pavement Preservation

2029



2025 PROJECTS

