

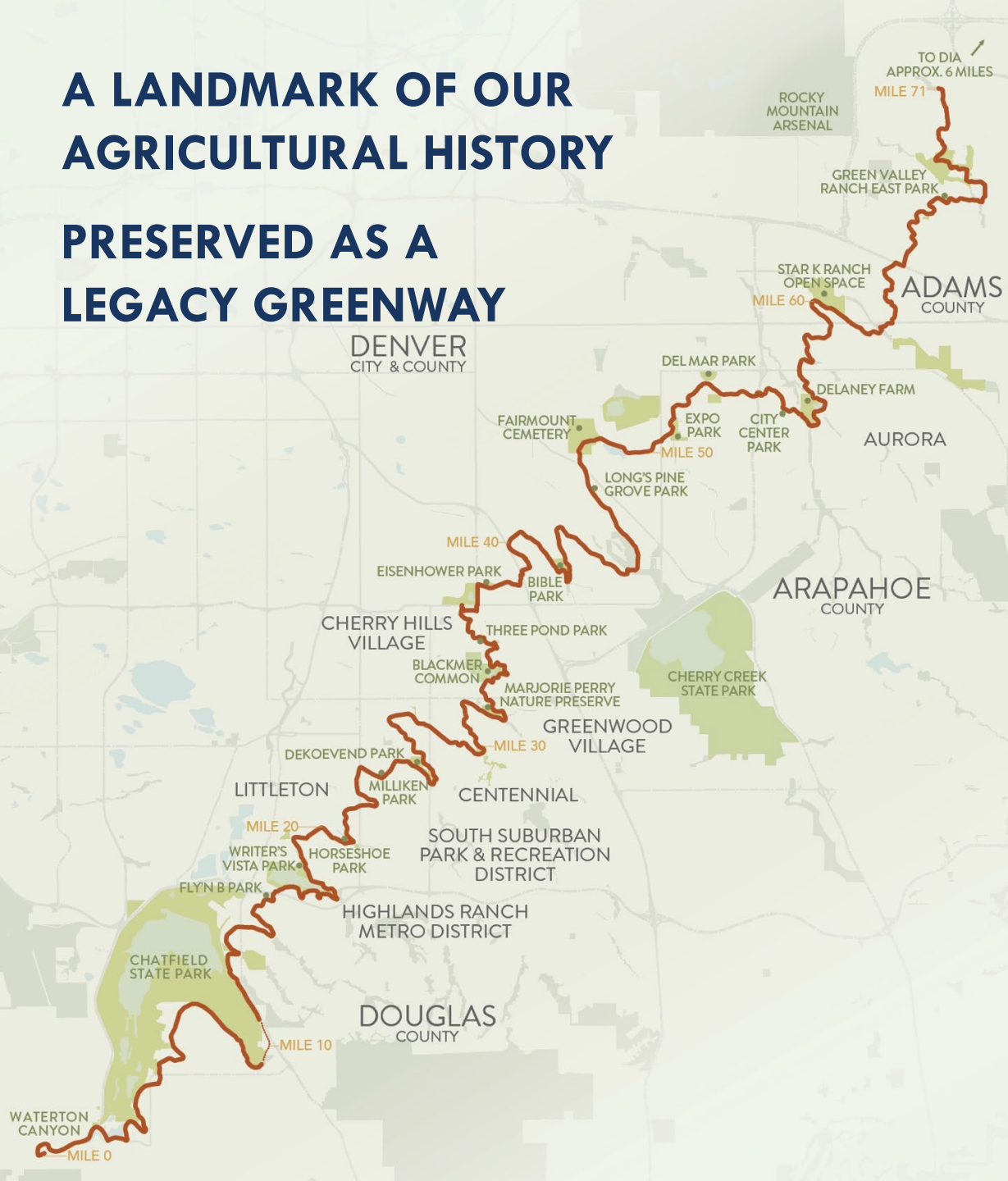


High Line Canal Transition

Littleton City Council
May 2026

A LANDMARK OF OUR AGRICULTURAL HISTORY

PRESERVED AS A LEGACY GREENWAY



860 ACRES

(more than NYC's Central Park!)



350,000

residents within one mile



1 MILLION

trail users per year



Photo provided by Denver Water

HAND DUG IN 1883
ACQUIRED BY DENVER WATER IN 1924
OPENED TO RECREATION IN 1970



HIGH LINE CANAL
CONSERVANCY



Photo credit: Evan Anderman

OUTLIVING ITS HISTORIC USE 60-80% OF WATER LOST



**HIGH LINE CANAL
CONSERVANCY**



Photo provided by Denver Water

LAST CENTURY'S INFRASTRUCTURE



HIGH LINE CANAL
CONSERVANCY



Photo credit: Evan Anderman

THIS CENTURY'S OPEN SPACE NETWORK



HIGH LINE CANAL
CONSERVANCY

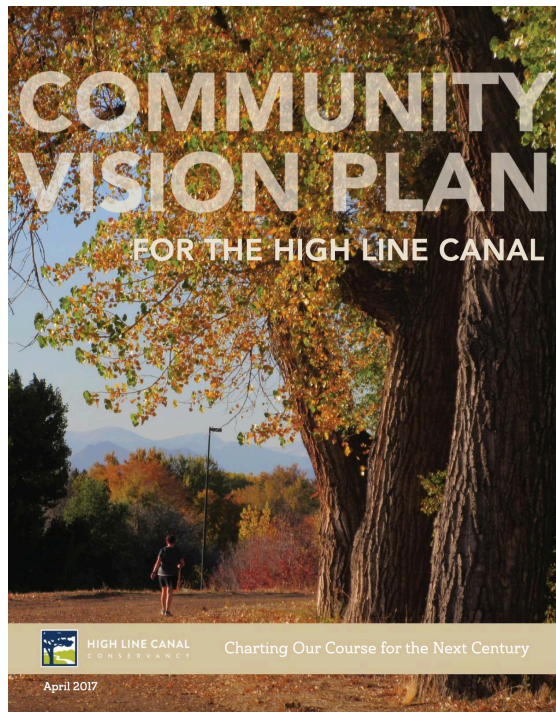
Canal Collaborative Regional Management Structure

1. Adams County
2. Arapahoe County
3. Aurora
4. Centennial
5. Cherry Hills Village
6. City and County of Denver
7. Denver Water
8. Douglas County
9. Greenwood Village
10. Highlands Ranch Metro District
11. High Line Canal Conservancy
12. Littleton
13. Mile High Flood District
14. Southeast Metro Stormwater Authority
15. South Suburban Parks and Rec. District



Background

- High Line Canal Working Group formed in 2011
- High Line Canal Conservancy formed in 2014
- Canal Collaborative formalized in 2021
- Two seminal plans and two stormwater studies



THE PLAN FOR THE HIGH LINE CANAL

The Plan serves as a pathway forward to revitalize and transition the Canal as a regional greenway while improving the health of the ecosystem.

Objectives:

1. Human Health, Use, and Safety
2. Environmental Health
3. Honor and Repurpose
4. Accessibility and Connectivity



LANDSCAPE AND TREE CARE



caring for
23,000+
mature trees
and
planting **50** new trees/mile





58 Trees Planted in Littleton Since 2021



HIGH LINE CANAL
CONSERVANCY

ACCESS AND SIGNAGE



171 new mile markers

200+ new wayfinding signs

5 new trail heads

7 improved access points



Elati Street Pedestrian Bridge Replacement



HIGH LINE CANAL
CONSERVANCY

SAFETY AND CROSSING ENHANCEMENTS



7
underpasses



20
improved
crossings



5
trail gaps
connected





Existing Condition: S. Broadway Crossing at Arapahoe Rd

NEIGHBORHOOD IMPROVEMENTS



89
new benches



4
new picnic
areas



15+
new community
spaces





Lee Gulch Lookout Celebration

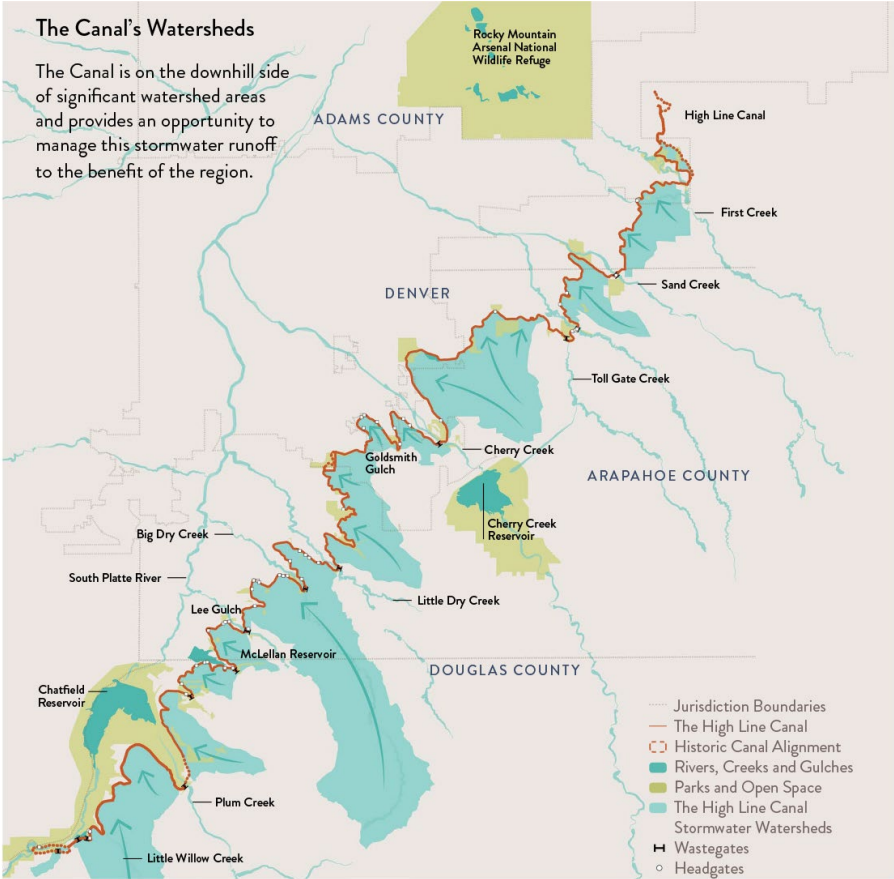


HIGH LINE CANAL
CONSERVANCY

STORMWATER MANAGEMENT

The Canal's Watersheds

The Canal is on the downhill side of significant watershed areas and provides an opportunity to manage this stormwater runoff to the benefit of the region.



40%

cleaner water with stormwater management



Infrastructure needed to mitigate the risk of overtopping





Stormwater Connection at Windermere St



HIGH LINE CANAL
CONSERVANCY

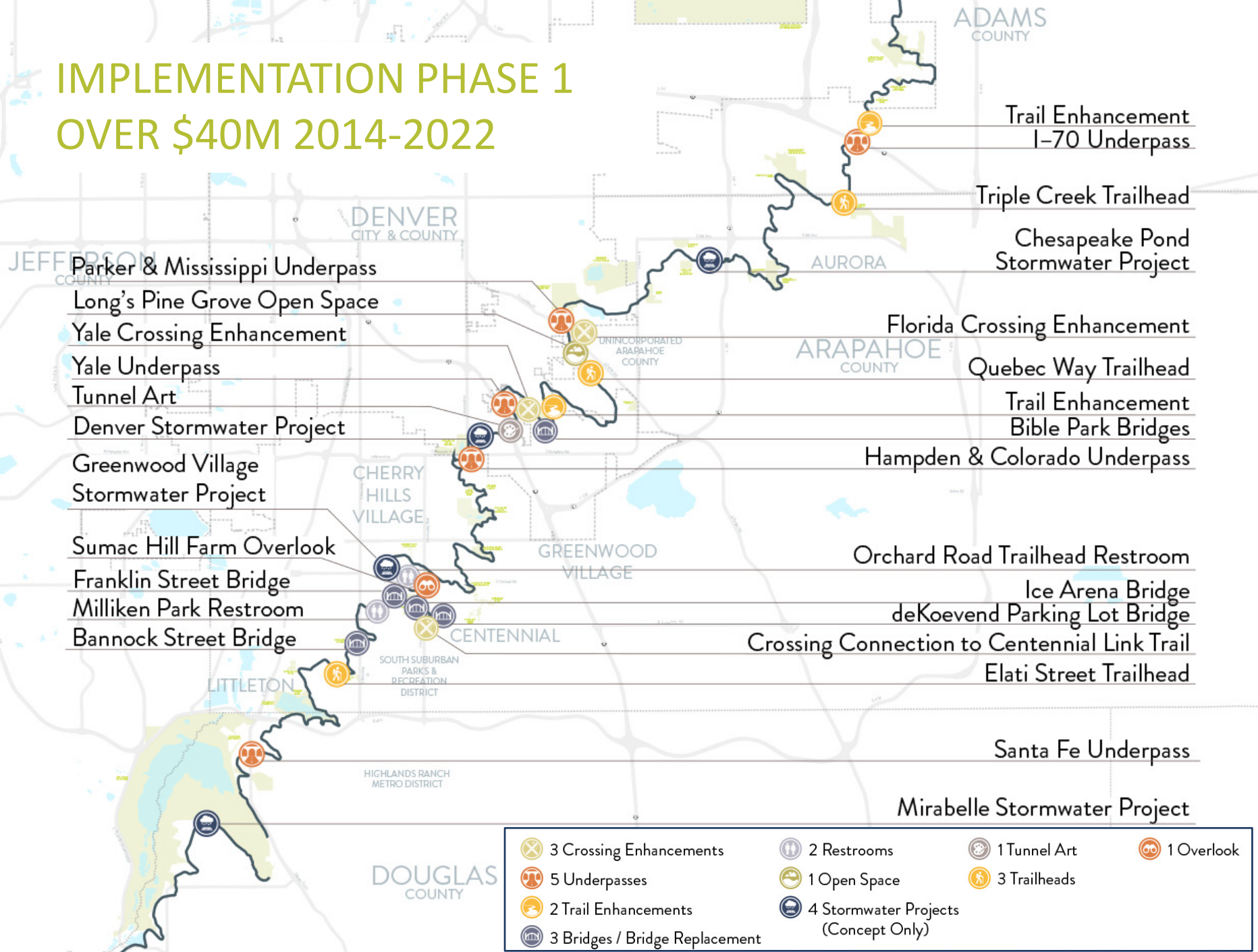


Stormwater in the Canal Supports Newly Planted Trees



HIGH LINE CANAL
CONSERVANCY

IMPLEMENTATION PHASE 1 OVER \$40M 2014-2022



Parker & Mississippi Underpass
 Long's Pine Grove Open Space
 Yale Crossing Enhancement
 Yale Underpass
 Tunnel Art
 Denver Stormwater Project
 Greenwood Village Stormwater Project
 Sumac Hill Farm Overlook
 Franklin Street Bridge
 Milliken Park Restroom
 Bannock Street Bridge

Trail Enhancement I-70 Underpass
 Triple Creek Trailhead
 Chesapeake Pond Stormwater Project
 Florida Crossing Enhancement
 Quebec Way Trailhead
 Trail Enhancement Bible Park Bridges
 Hampden & Colorado Underpass
 Orchard Road Trailhead Restroom
 Ice Arena Bridge
 deKoevend Parking Lot Bridge
 Crossing Connection to Centennial Link Trail
 Elati Street Trailhead

Santa Fe Underpass

Mirabelle Stormwater Project

- | | | | |
|--------------------------------|--------------------------------------|--------------|------------|
| 3 Crossing Enhancements | 2 Restrooms | 1 Tunnel Art | 1 Overlook |
| 5 Underpasses | 1 Open Space | 3 Trailheads | |
| 2 Trail Enhancements | 4 Stormwater Projects (Concept Only) | | |
| 3 Bridges / Bridge Replacement | | | |

Arapahoe County Open Spaces

- Capital Improvements (\$12M since 2011 and \$9M more committed through 2029)
- Operations (Open Spaces, Public Works, County Attorney)
- Interim Maintenance



Writers Vista Restroom and Shelter



Bannock Street Ped Bridge

Over \$65 million in Investments Planned for 2026-2030



ACCESS

- 4 pedestrian bridges/ canal crossings
- 2 enhanced trailheads



ENVIRONMENTAL HEALTH

- 130 new trees
- 4 irrigation line installations
- 1 pollinator garden



CONNECTIVITY

- 3 underpasses
- 5 enhanced at-grade crossings
- 5.2 miles of enhanced trail surface

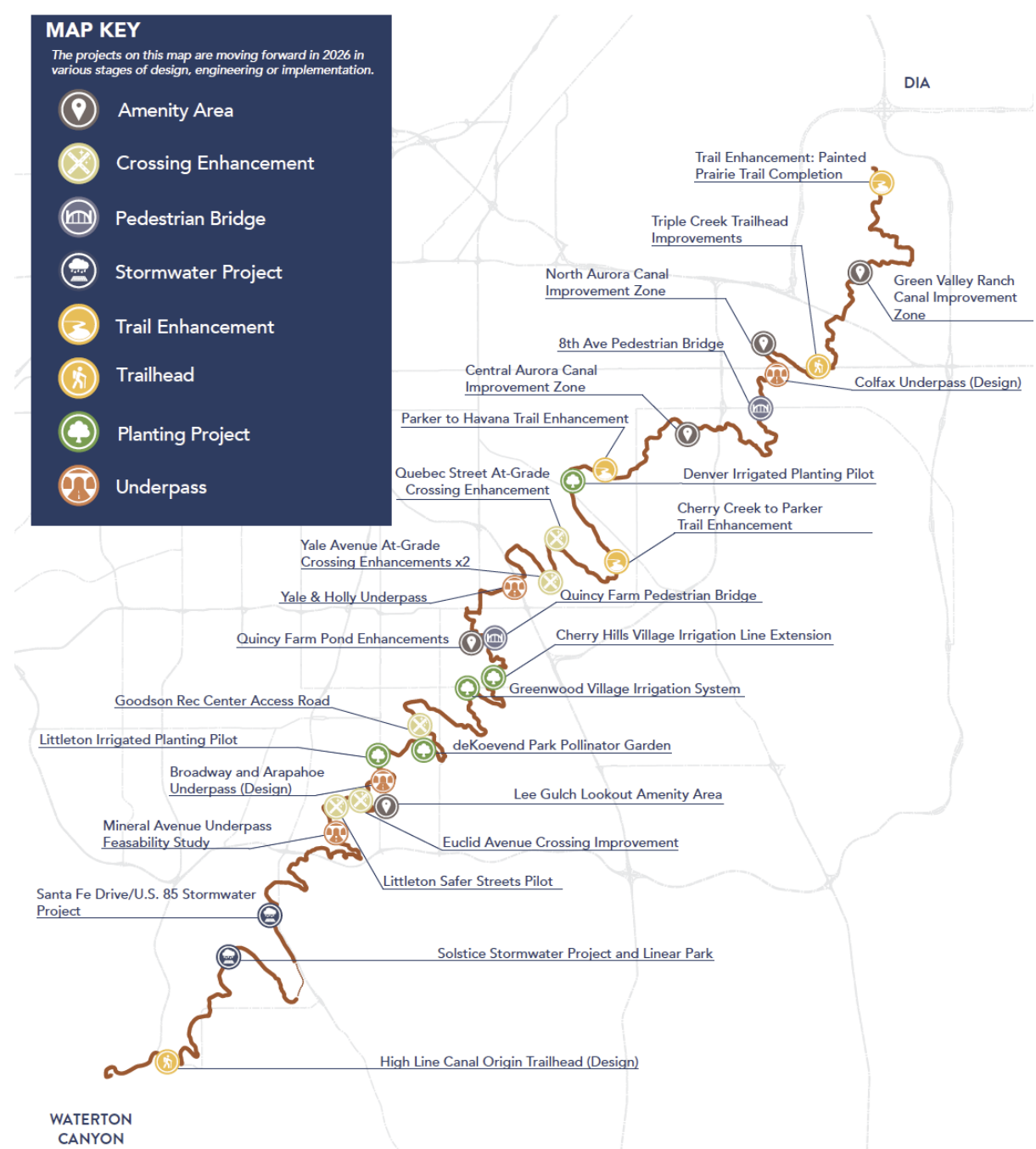


AMENITIES & ACTIVATION

- 30 benches
- 5 Canal Improvement Zones

MAP KEY
The projects on this map are moving forward in 2026 in various stages of design, engineering or implementation.

- Amenity Area
- Crossing Enhancement
- Pedestrian Bridge
- Stormwater Project
- Trail Enhancement
- Trailhead
- Planting Project
- Underpass



Find more details in the projects descriptions that follow.

Littleton Projects Underway

- Irrigated Tree Planting Pilot
- Broadway and Arapahoe Underpass Design
- Mineral At-Grade Crossing Improvements
- Mineral Underpass Feasibility Study
- C-470 Trail Connection
- Safer Streets Pilot Projects (Fremont Ave and Gallup St)



Broadway and Arapahoe Underpass Design



Irrigated Tree Planting

Canal-Wide Projects Underway

- Stormwater Transition and Management Plan (STAMP)
- Corridor Transition and Maintenance Agreements
- Data Repository
- Tree Risk Assessment
- Tree Canopy Care
- Russian Olive Removal
- Historic Context
- Interpretive Plan



High Line Canal Gates at Big Dry Creek



Transition Period 2024-2027

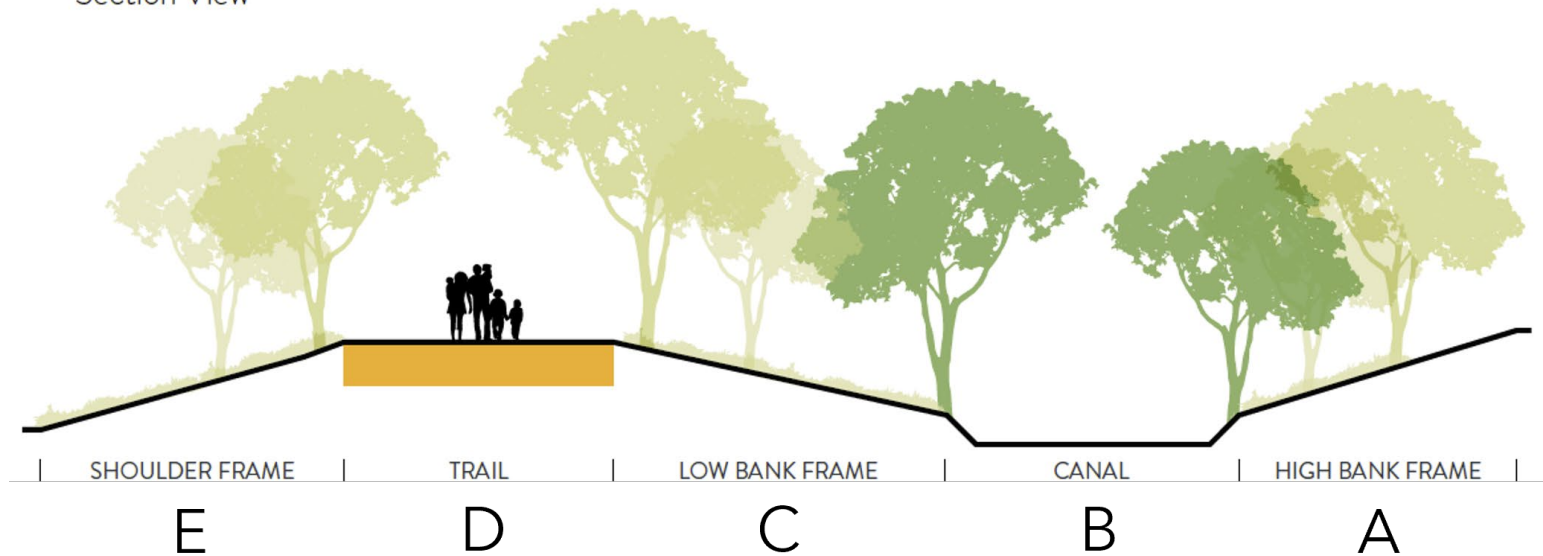
- In 2026, Arapahoe County will fund basic maintenance
- Procedures for project approvals, licenses and easements are being developed and require significant County staff time. County staff are also coordinating reviews with the Conservancy (Conservation Easement) and Denver Water (water works purposes)
- Up-Front Maintenance funded through the Conservancy's Stewardship Fund has addressed high-hazard trees, debris removal, Russian olive removal and adaptive management of Ash trees
- Natural Resources Management Plan (NRM Plan) and Stormwater Transition and Management Plan (STAMP) to guide operations and maintenance in 2027 and beyond

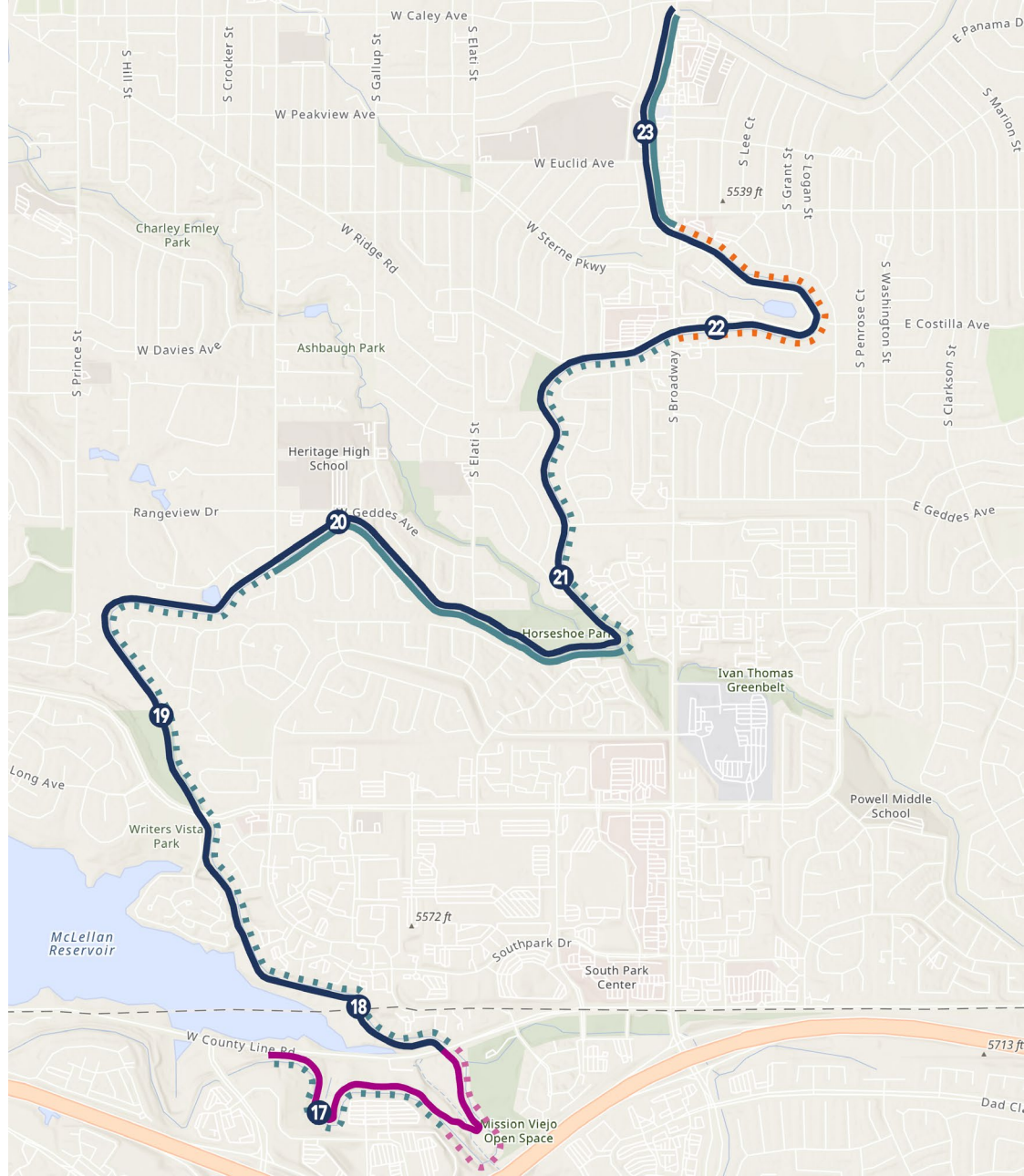


Full Corridor Maintenance and Use Commitment

- Transition of full corridor maintenance to local partners in 2027/2028
- Goals of full corridor IGAs include:
 - Authorizes existing stormwater discharges
 - Defines roles/responsibilities for operations, maintenance and management
 - Streamlines review and approval processes

Section View





High Line Canal Management Map Littleton / SSPRD

Tracking areas of the Canal where maintenance and management responsibilities have transitioned from Denver Water to local

Stormwater Agencies

- Littleton - Fully Transitioned
- - - Littleton - To Be Transitioned
- - - HRMD PW - To Be Transitioned
- - - SEMSWA - To Be Transitioned

Recreation Agencies

- SSPRD
- HRMD PROS



Stewardship Fund Overview

Stewardship Fund Overview

- Established to support the basic needs of the Canal and leverage additional local investment in care
- Combines private funding raised by the Conservancy with an investment from Denver Water for a total of \$15M
- Fund managed by HLCC and earnings disbursements are overseen and approved by the HLCC Board of Directors

Long-Term Funding

- Beginning in 2027, will provide ongoing support for some of the basic needs of the Canal and natural resource restoration
- Will not supplant current maintenance fulfilled through recreation leases



Stewardship Fund Up-Front Maintenance

The Conservancy has Invested \$339,000 in Littleton since 2024

- 28 high hazard trees mitigated
- 5 unhealthy ash trees removed, 11 healthy ash trees inoculated
- 57 invasive Russian olive removed and treated
- Debris cleared from the channel across all 4.7 miles in Arapahoe County



Before and After Debris Removal



Canal-Wide Management Plans

Natural Resources Management Plan (NRM Plan)

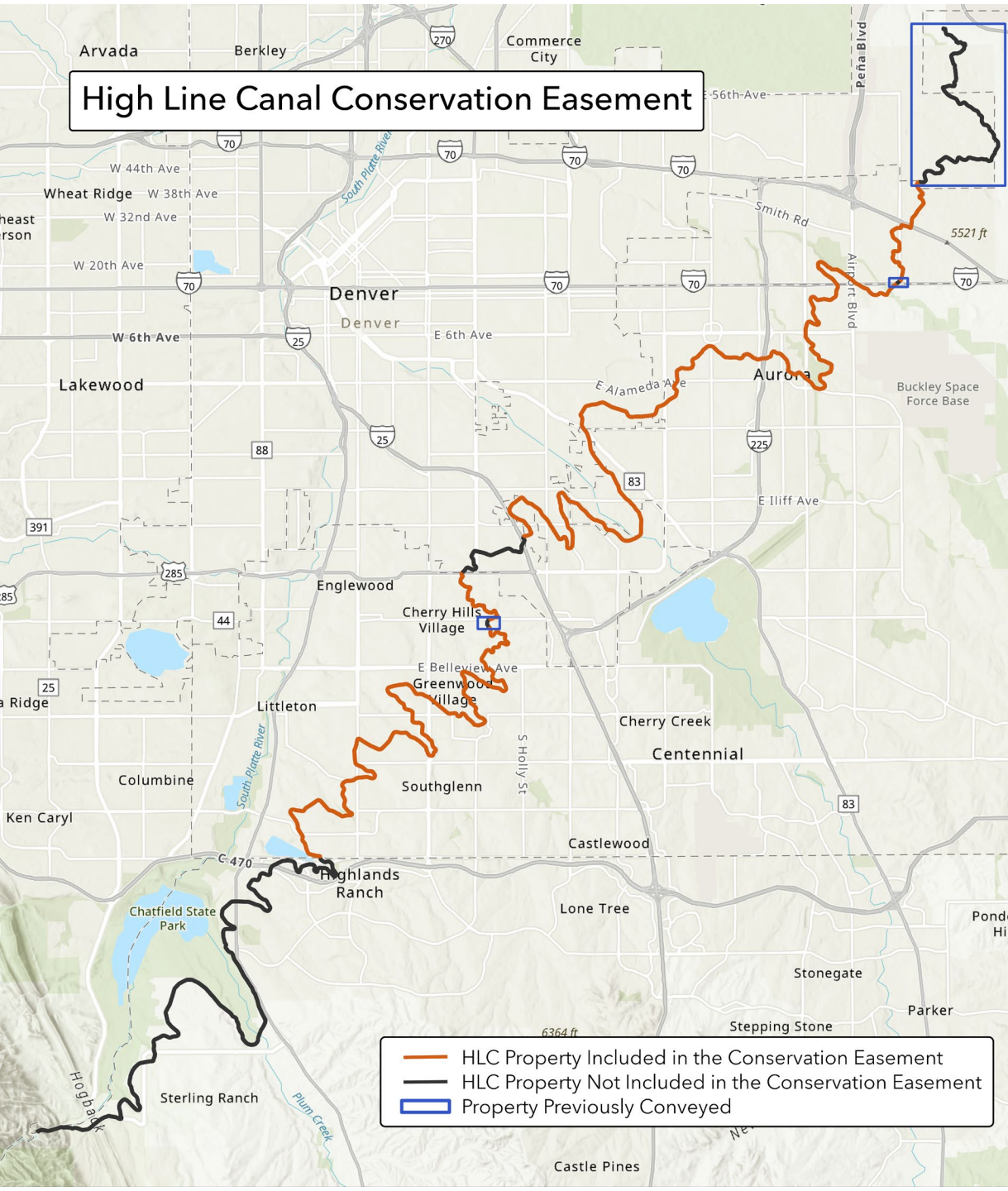
- Supporting riparian ecosystems
- Introducing irrigation
- Minimum level of care
- Projecting the cost of maintenance
- Operationalizing the transition

Stormwater Transition and Management Plan (STAMP)

- Mitigating risk
- Improving water quality
- Projecting the cost of maintenance
- Formalizing the Flood District's role



High Line Canal Conservation Easement



Regional Legacy Preserved

June 2024

Conservation easement placed on nearly two thirds of the High Line Canal.

- Arapahoe County
- Adams County
- City and County of Denver
- Working toward permanent protection in Douglas County

Conservation Easement Overview

Conservation Values protected:

- Linear open space park with public recreational trail and canal,
- Public access and recreational use,
- Stormwater uses, and
- Environmental and ecosystem values.

Reserved Rights:

- DW water works

Unique Easement Reflecting Urban Property

- Partnership between the Conservancy and the County to protect the Canal's Conservation Values
- Nothing in the easement precludes any governmental entity from taking or authorizing actions necessary to address a public necessity, to protect public health or to comply with governmental regulations and requirements.



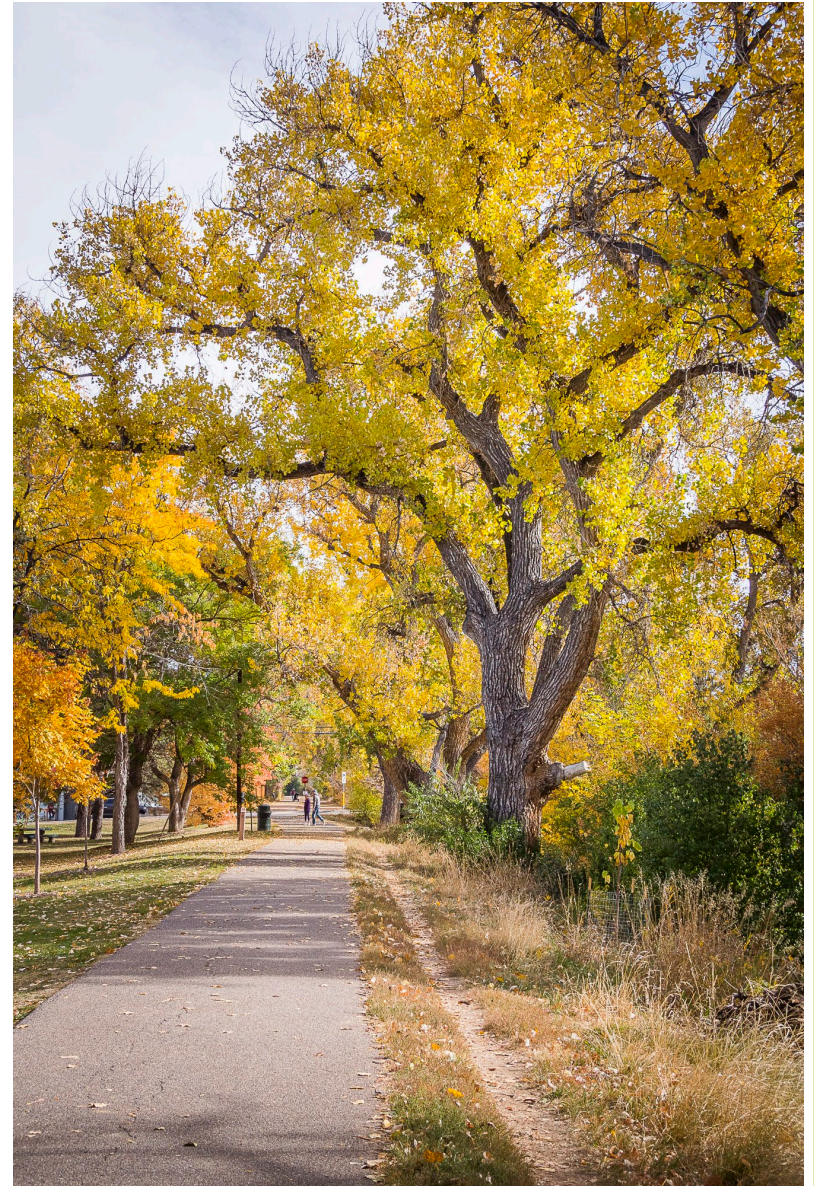
Conservation Easement Overview (Cont.)

Allowed Uses:

- Uses that Align with the Conservation Values
- Public Necessity, Health and Safety
- Denver Water's Water Works Purposes
- Stormwater and Utility Uses
- Recreation Uses
- Special Events and Programs
- Maintenance of the Property

Prohibited Actions:

- Construction of Buildings
- Alteration of the Canal
- Subdivision
- Commercial or Industrial Activity
- Fee for Recreational Use
- Chemicals and Dumping
- Motorized Vehicle Use
- Mining



THANK YOU.

