

Powers Park Final Site Plan

City of Littleton Council Study Session April 22, 2025

Melissa Reese-Thacker, Planning Manager, South Suburban Parks and Recreation



Existing Site

- 4.75 Acre Neighborhood Park
- Owned by the City of Littleton
- Managed by South Suburban Parks and Recreation
- Existing 25-Year Stormwater Detention Facility for Slaughterhouse Gulch



Existing Site

- 2023 Mile High Flood District removed silt and seeded the pond
- 2024 Littleton replaced the storm sewer from outfall to the street
- 2025 Mile High Flood District performed soil analysis and re-seed the pond in with a more diverse plant mix



Future opportunity for natural material and nature exploration when the Slaughterhouse Gulch drainage system is improved.

Need

- **Playground is 24 years old, at end of useful life**
- **Playground lacks access and play components per ADA**
- **Lacks accessible route to playground and shade pavilion**
- **Lacks neighborhood access from the north, east, and west**
- **South Metro Land Conservancy (SMLC) Vision Plan**
- **Development of The Overlook by South Metro Housing Authority**

SMLC Vision Plan



Powers Park | VISION PLAN

02/11/22

stream
landscape architecture + planning

South Metro
LAND CONSERVANCY

*The thoughts, ideas, or opinions expressed by SMLC are their alone and do not represent those of the City of Littleton and South Suburban Parks and Recreation District.

SCALE: 1"=50'

0 25 50 100

N

Opportunity and Constraints

Opportunities

- Introduce new park amenities
- Provide more space for neighborhood gatherings
- Make neighborhood connections
- Provide a walking loop
- Provide shaded seating area adjacent to rehabilitation facility
- Add native planting

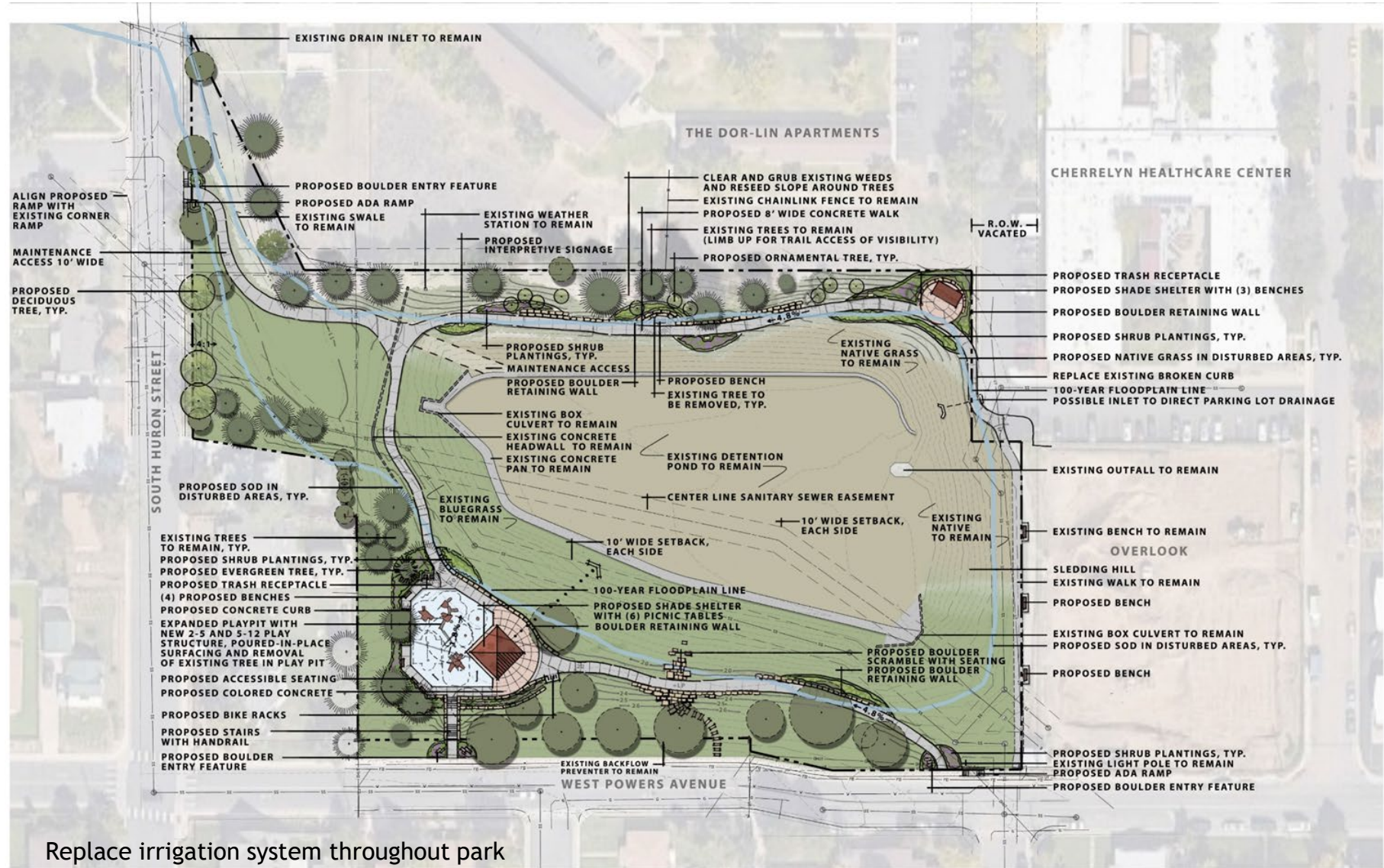
Constraints

- Floodplain – 25 Year Stormwater Detention Facility
- Underground utilities (storm sewer, electrical, etc) and easements

Public Input

- September 2024 - Board reviewed the Conceptual Site Plan
- October 3-30, 2024 – Online Community Survey (18 responses)
- October 17, 2024 – Public Input Open House (3 participants)
- March 18, 2025 – Bilingual Presentation to North Littleton Promise (25 participants)
- April 9, 2025 – South Suburban Board approved the Final Site Plan follow an opportunity for public comment
- April 22, 2025 – Littleton City Council reviews the Final Site Plan

Final Site Plan



Replace irrigation system throughout park

POWERS PARK - SITE PLAN

April 09, 2025

SOUTH SUBURBAN
PARKS & RECREATION

DHM DESIGN
1001 S. Broadway
Suite 300
Orem, UT 84057
801.225.8200
www.dhmdesign.com

SCALE:
1" = 30'

0' 15' 30' 60' N



Key Map

Final Site Plan Renderings



VIEW LOOKING NORTH

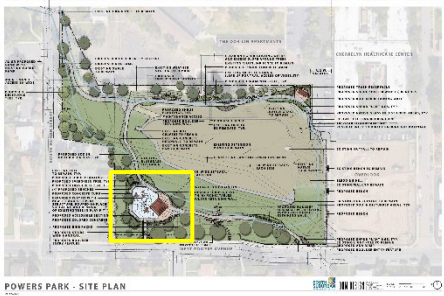


Key Map

Final Site Plan Renderings



VIEW LOOKING WEST



Key Map

Final Site Plan Renderings



BIRDS-EYE VIEW LOOKING WEST



Key Map

Final Site Plan Renderings



BIRDS-EYE VIEW LOOKING SOUTH



Key Map

Boulder Scramble Example



Boulder Scramble at Lee Gulch along the High Line Canal

Littleton Root and Renew Master Plan Alignment

Maintain and Enhance Existing Assets

- ❖ Improve park entrances, replace playground, added trails

Develop More Opportunities for Residents

- ❖ Added boulder scramble and loop trail

Resiliency and Nature

- ❖ Use of natural materials in retaining wall and native plantings

Community and Culture

- ❖ Larger shade pavilion for neighborhood gatherings, new shade pavilion at NE corner of park, investigating options for public art

South Suburban Master Plan Alignment

Quality First

- ❖ Invest in replacing assess that can better meet the community's needs... are in poor condition, and/or reached end-of-life usability.

Connect Communities

- ❖ Reinforce parks and open spaces as destinations that are integrated into the community and designed with features that are accessible to all ages and abilities.
- ❖ Invest in neighborhood parks as places that represent the community through placemaking and provide opportunities for gathering, recreation, and spending time in nature.

Stewards of Nature and Sustainability

- ❖ Identify and invest in sustainability programs and equipment to improve resiliency of our spaces.
- ❖ Strengthen and enhance the trail network to create stronger connections and improved access between neighborhood, parks, open spaces, trail corridors, and the larger community.

Proposed Next Step

- **Applied for a Grant from Arapahoe County Open Spaces, April 11**
- **Complete Construction Drawings, June 2025**
- **Grant Awards, late July 2025**
- **Submit Plans for City Approval, July 2025**
- **Award of Construction Contract, November 2025**
- **Construction, January – June 2026**

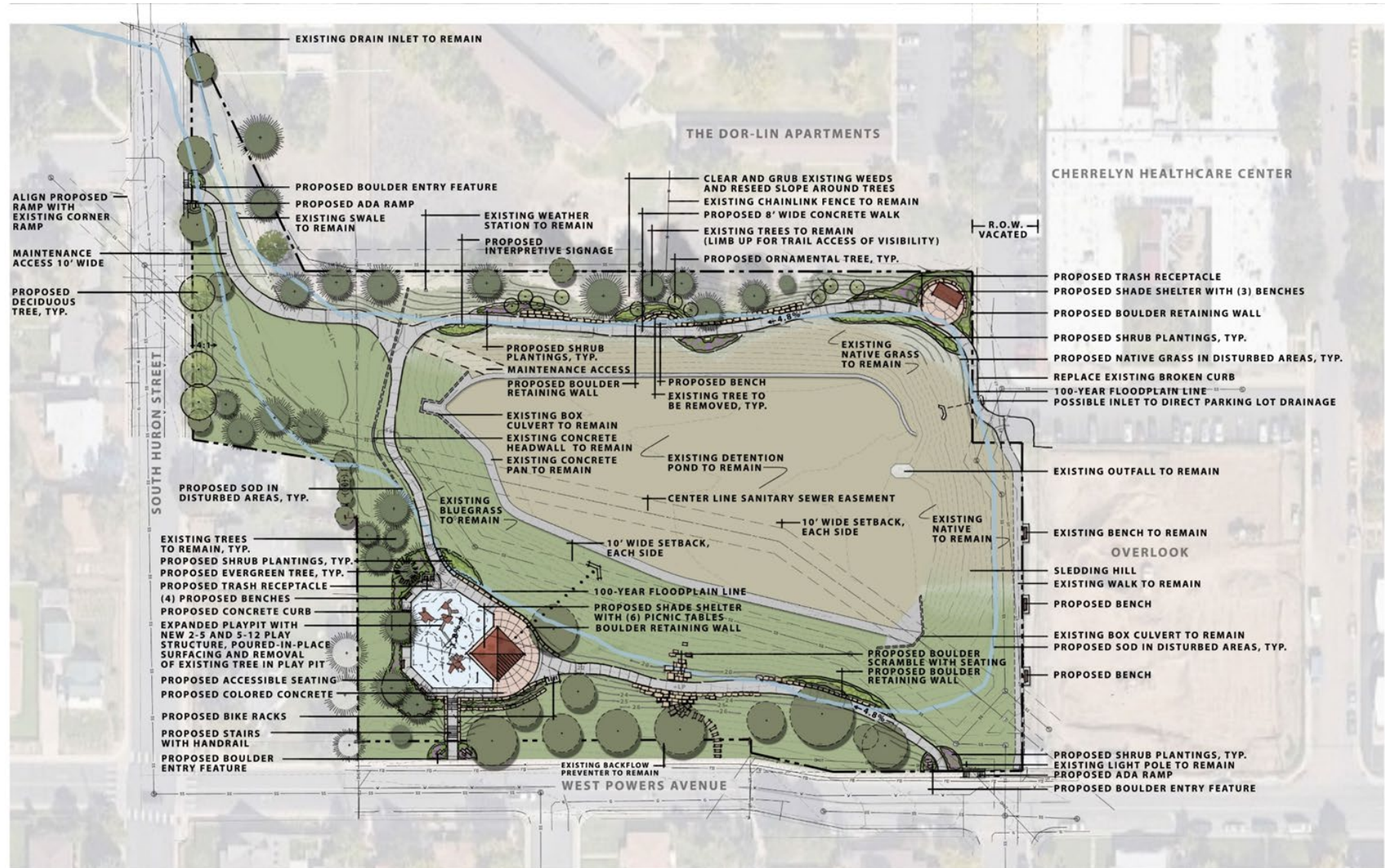


Questions?



ssprd.org

Final Site Plan



POWERS PARK - SITE PLAN

April 09, 2025