

Forestry Updates

Mary Brand Danser, City Forester

Diana Kamenel Trettin, Manager of Grounds Open Space and Natural Resources

Brent Soderlin, Director, Public Works

January 20, 2026

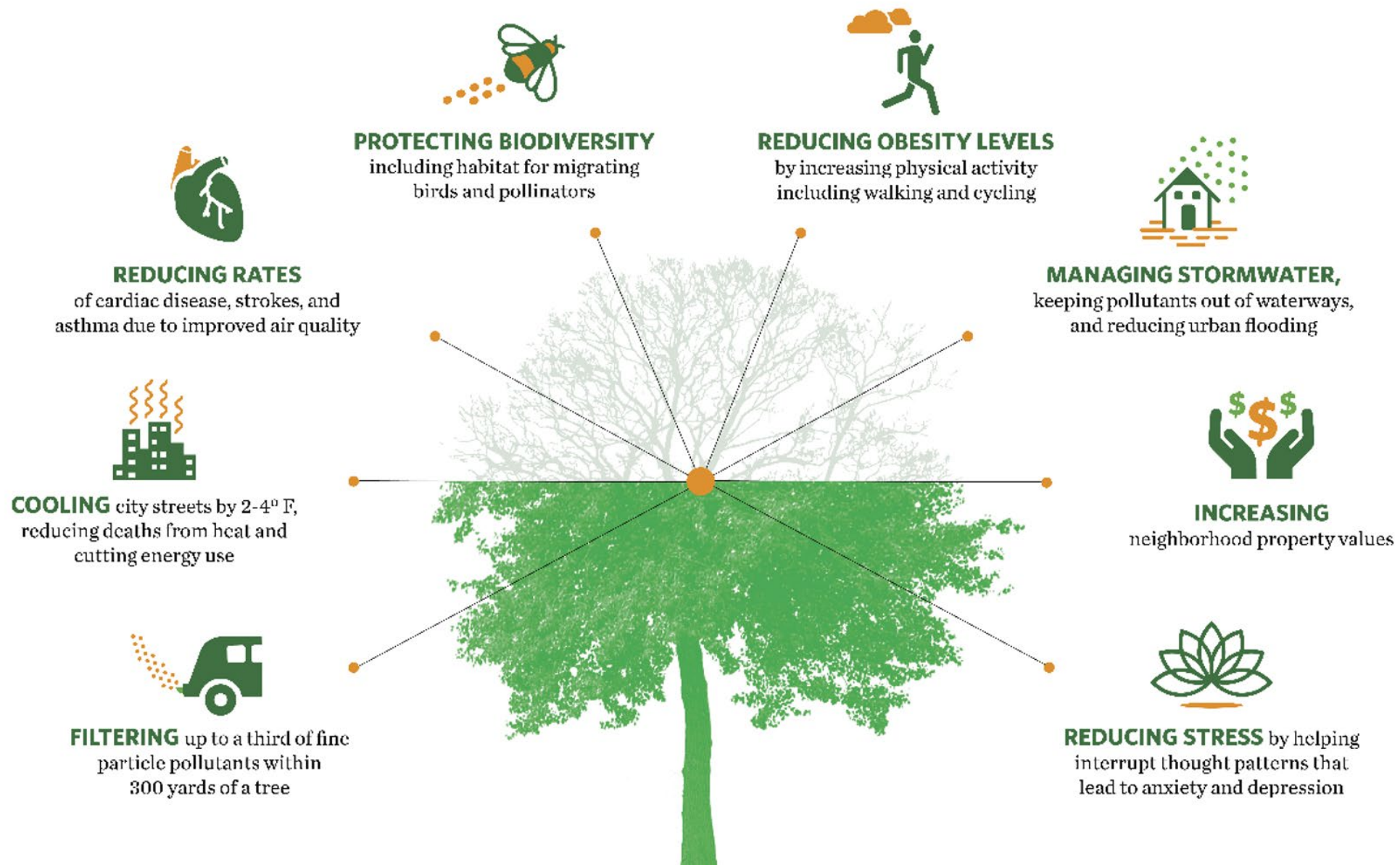
Agenda

- Benefits of Urban Trees
- Timeline
- Inventory and Risk Assessment
- Urban Tree Canopy Assessment
- Forestry Management Plan
 - Updates on Expected Challenges and Long-term Goal
- Tree Manual
- Public Outreach
- Next Steps

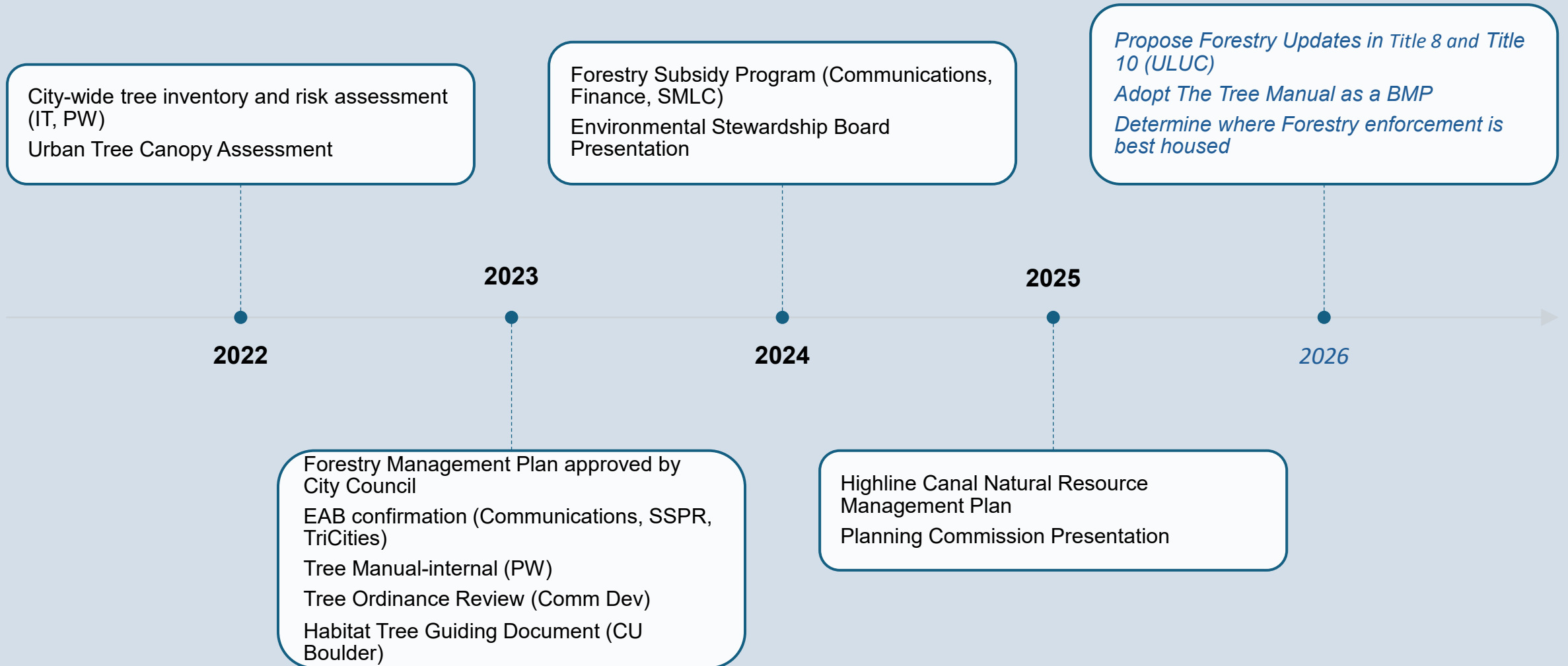


Benefits of Urban Trees

Research has linked the presence of urban trees to...



TIMELINE



Urban Tree Canopy Assessment (2022)

- Current canopy coverage is decreasing

Comparing Data over 10 Years		
2013 Classification Category	2013 Percentage	2023 Percentage
Tree Canopy	25%	20%
Grass and Vegetation	24%	32%
Bare Soil	6%	4%
Impervious Surface	37%	36%
Water	8%	8%

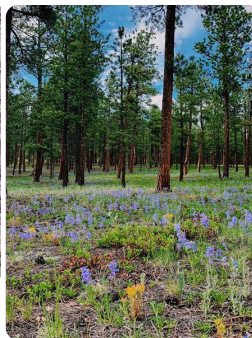
Increasing pervious surfaces helps manage and improve water quality, mitigate flooding, increase biodiversity, and support vegetation growth.



Forestry Management Plan (2023)

Expected Challenges:

- **EAB-** potentially loss of 14% of urban canopy (total is only 20%)
- **Highline Canal-** aging trees, lack of water, monoculture, pressure around trail construction
- **Declining Canopy-** years of deferred maintenance and lack of standards around current trees
- **Limited Maintained Land-** COL only maintains 80 acres of the 9000 total acres surveyed in the UTC.
- **Increased Development-** often means increased impervious surfaces



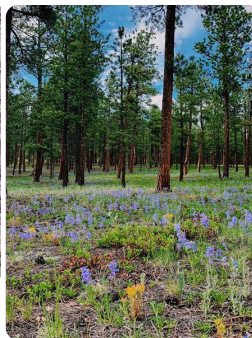
Forestry Management Plan (2023)

Long Term Goals:

Canopy increase

Quantifiable diversity increase

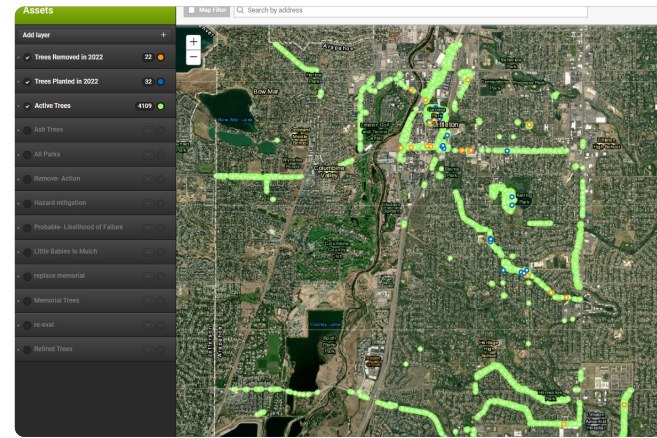
Proactive risk reduction



Forestry Subsidy Program Update

- Community Engagement
- Tree Equity
- EAB Education and Prevention

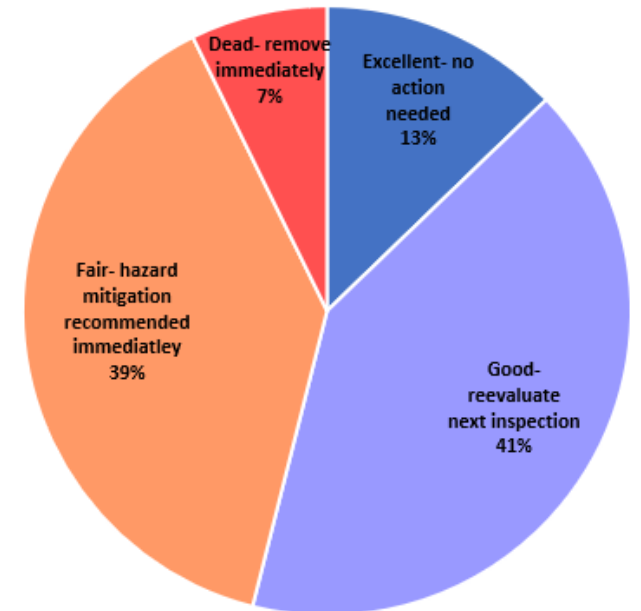
91 applications!
(for 2024 & 2025)

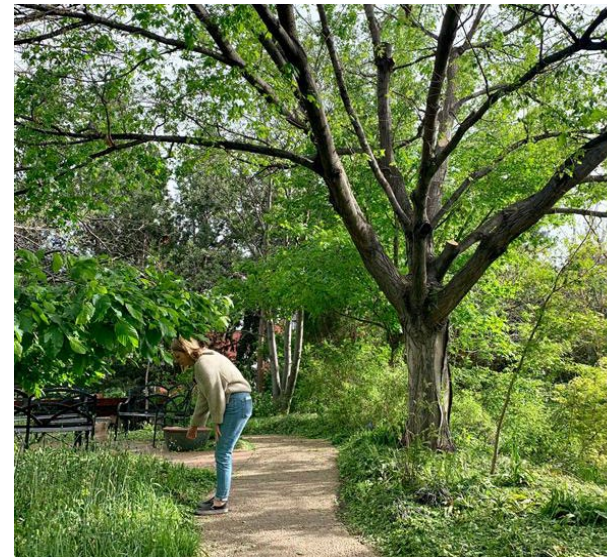


Inventory and Risk Assessment (2022)

- Lack of species diversity
- Declining canopy: 46% required prompt hazard mitigation
- Included Partners: IT, PW, Highline Canal Conservancy

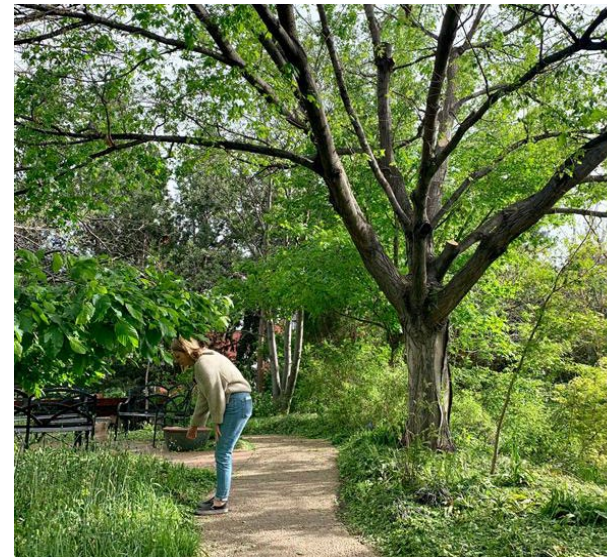
Overall Condition of Canopy





The Tree Manual- explained

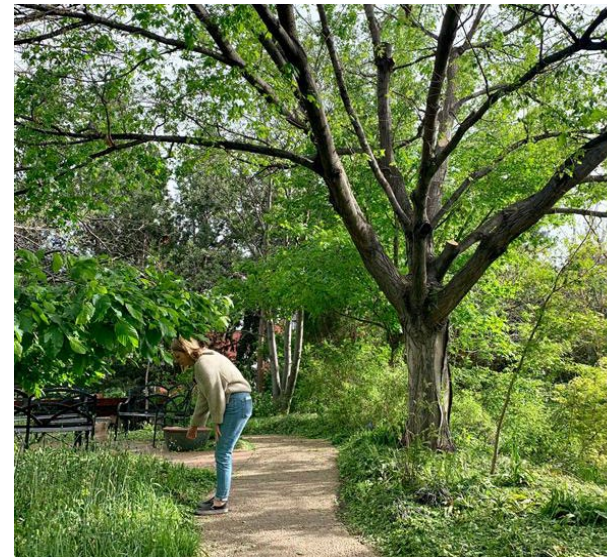
- Proposed Best Management Practice for arboriculture within the City of Littleton to provide property owners, contractors and city staff with comprehensive guidance.
- Referenced in 8-4 and 10-1-3 (ULUC) but not enforceable until adopted



The Tree Manual- Tree Planting for Contractors

Defines the required planning, preparation, and installation requirements for Contractors planting on City property.

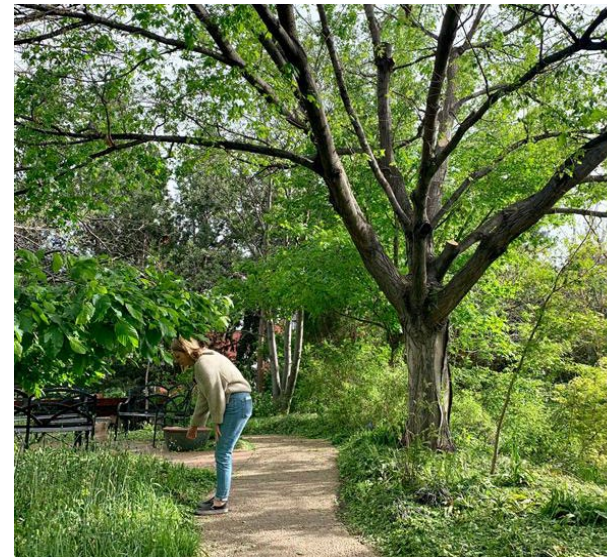
- Includes: ROW Minimum Spacing, Tree Diversity Goals, Tree Location, Proper Tree Planting



The Tree Manual- Tree Maintenance

Summarizes industry standard guidelines for properly maintaining newly installed trees.

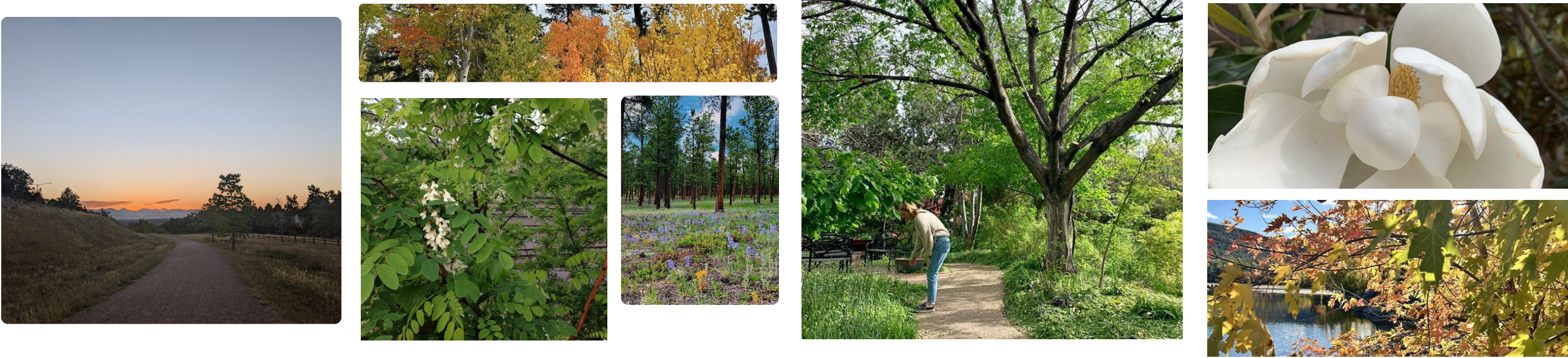
- Includes: Monitoring, Irrigation, Mulch, Structure Pruning, Tree Warranty



The Tree Manual- Irrigation Standards

Outlines the approved options for irrigating newly installed trees.

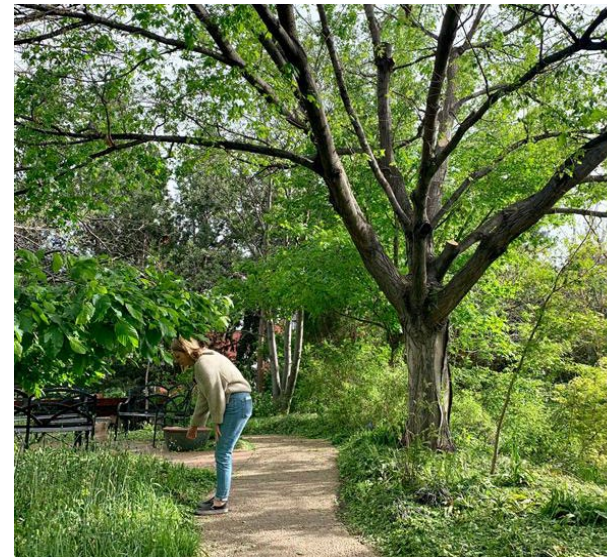
- Includes: Requirements for trees, turf, and other vegetation; Water Conservation; Watering Log; Annual Maintenance; Repairs



The Tree Manual- Tree Preservation & Protection During Construction

Guides Contractors performing construction on City property on best practices for preserving and protecting trees from damage.

- Includes: Planning & Design Standards; Tree Protection Zone; Tree/ Root Pruning; Soil Compaction Mitigation



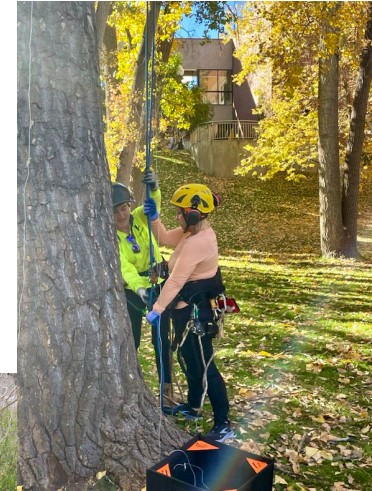
The Tree Manual- Tree Removal and Damages

Presents the City of Littleton's tree removal permit process, mitigation requirements and exceptions, and the consequences of violation.

- Includes: Tree Removal Process; Tree Replacement/ In-Lieu Fee Alternatives
- In-Lieu Fee Alternative is proposed to be \$250 per diameter inch. This is intended to serve as an incentive to preserve the existing canopy. This is consistent with neighboring communities.

Public Outreach and Engagement

- Forestry Website Update
- Community Events
- Arbor Day Events
- Schools
- Master Gardeners
- Arapahoe and Jefferson County Ext.
- South Metro Land Conservancy
- Colorado State Forest Service
- Highline Canal Conservancy



Next Steps

- Determine where Forestry enforcement is best housed
- Finalize update recommendations to Title 8 and Title 10
- Adopt the Tree Manual as a BMP for the City
- Expand subsidy program

